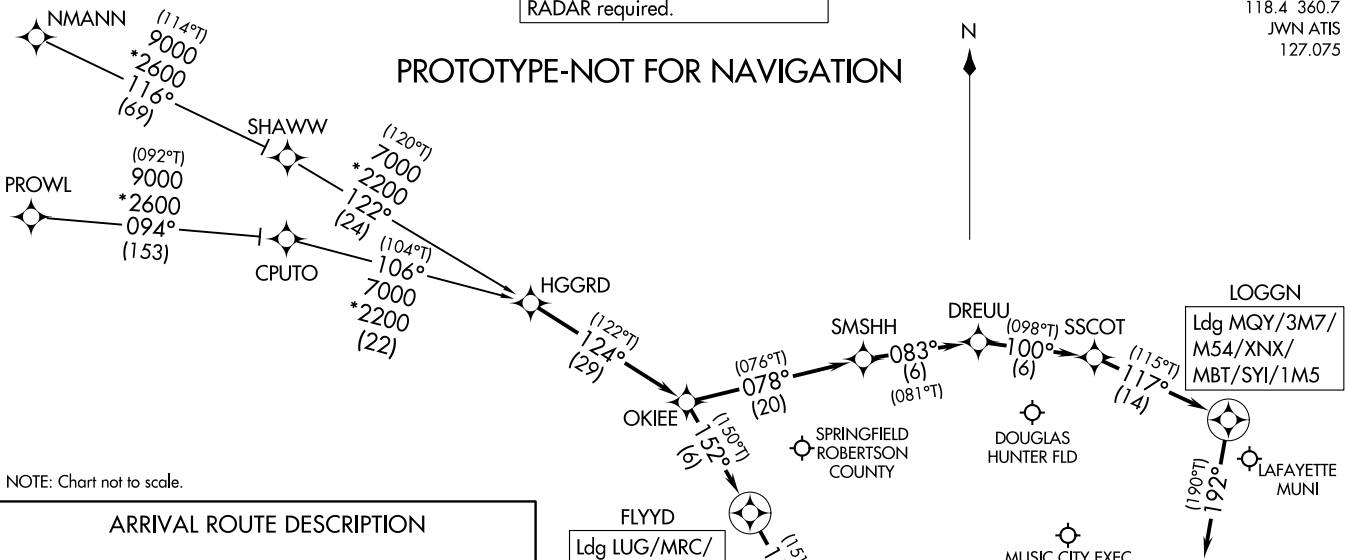


HGGRD ONE ARRIVAL (RNAV)
(HGGRD.HGGRD1) FIG

RNAV 1 - DME/DME/IRU or GPS.
RADAR required.

NASHVILLE APP CON
118.4 360.7
JWN ATIS
127.075

PROTOTYPE-NOT FOR NAVIGATION



NOTE: Chart not to scale.

ARRIVAL ROUTE DESCRIPTION

NMANN TRANSITION (NMANN.HGGRD1)
PROWL TRANSITION (PROWL.HGGRD1)

LANDING MQY/3M7/M54/XNX/MBT/SYI/1M5: From HGGRD on track 124° to OKIEE, then on track 078° to SSMHH, then on track 083° to DREUU, then on track 100° to SSCOT, then on track 117° to LOGGN, then on track 192°. Expect RADAR vectors to final approach course.

LANDING LUG/MRC/JWN/M02/M91: From HGGRD on track 124° to OKIEE, then on track 152° to FLYYD, then on track 153°. Expect RADAR vectors to final approach course.

(HGGRD.HGGRD1) FIG
HGGRD ONE ARRIVAL (RNAV)

AL-895 (FAA)

SMYRNA, TENNESSEE

SMYRNA, TENNESSEE