

Flight Procedures Cover Page	Task Action: FLIGHT CHECK	Task Type: IAP	Estimated Chart Date: 10/02/2025	APWS Task ID: B24C9B780C30496DAD49B76E290D7AD5	APWS Project ID: E829A129BD3E43879AD0CF7CFFB25999
Procedure: RNAV (GPS)-A AMDT 2	Enroute: NO	Specialist: Heiderstadt, Nicholas	Agreement Number:		
Airport ID: KDIJ	Airport City: DRIGGS	State: ID			
Facility ID:	Facility Type:	Flight Inspection Remark Type: New FC Slot			

Procedure Comments:
PENDING AIRPORT DATA USED
CONTACT DAVE DANNER 405-954-5077

6/11/2025: THIS IS AN UPATED COPY OF THE FORM DEVELOPED ON 04/28/2025.
ADDED 10/02/2025 TO REQUIRED EFFECTED DATE.

07/23/2025: THIS IS AN CORRECTED COPY OF THE FORM APPROVED ON 06/11/2025.
MISSED APPROACH INSTRUCTIONS: CORRECTED SPEED RESTRICTION FROM "MPH" TO "KIAS".

QUALITY
16
CHECKED

QUALITY
41
CHECKED

QUALITY
37
CHECKED

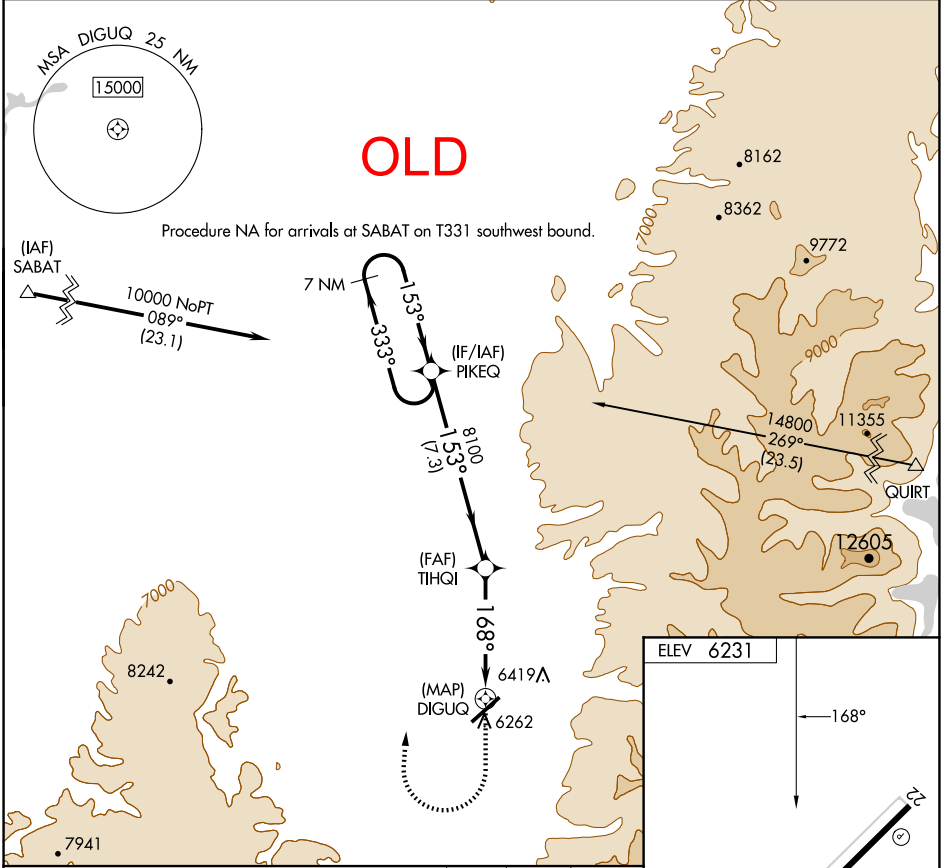
APP CRS 168°	Rwy Idg TDZE Apt Elev	N/A N/A 6231
------------------------	-----------------------------	---

RNAV (GPS)-A
DRIGGS/REED MEML (DIJ)

⚠ Circling NA for Cats C and D southeast of Rwy 4-22.
DME/DME RNP-0.3 NA.

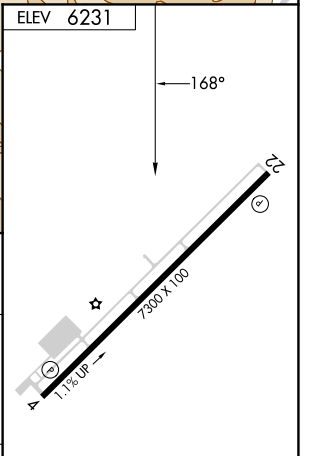
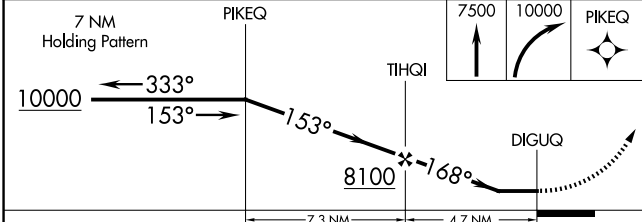
⚠ MISSED APPROACH: (Do not exceed 185K until established direct PIKEQ) Climb to 7500 then climbing right turn to 10000 direct PIKEQ and hold.

AWOS-3PT 120.775	SALT LAKE CENTER 128.35 239.25	UNICOM 122.7 (CTAF) 0
----------------------------	--	---------------------------------



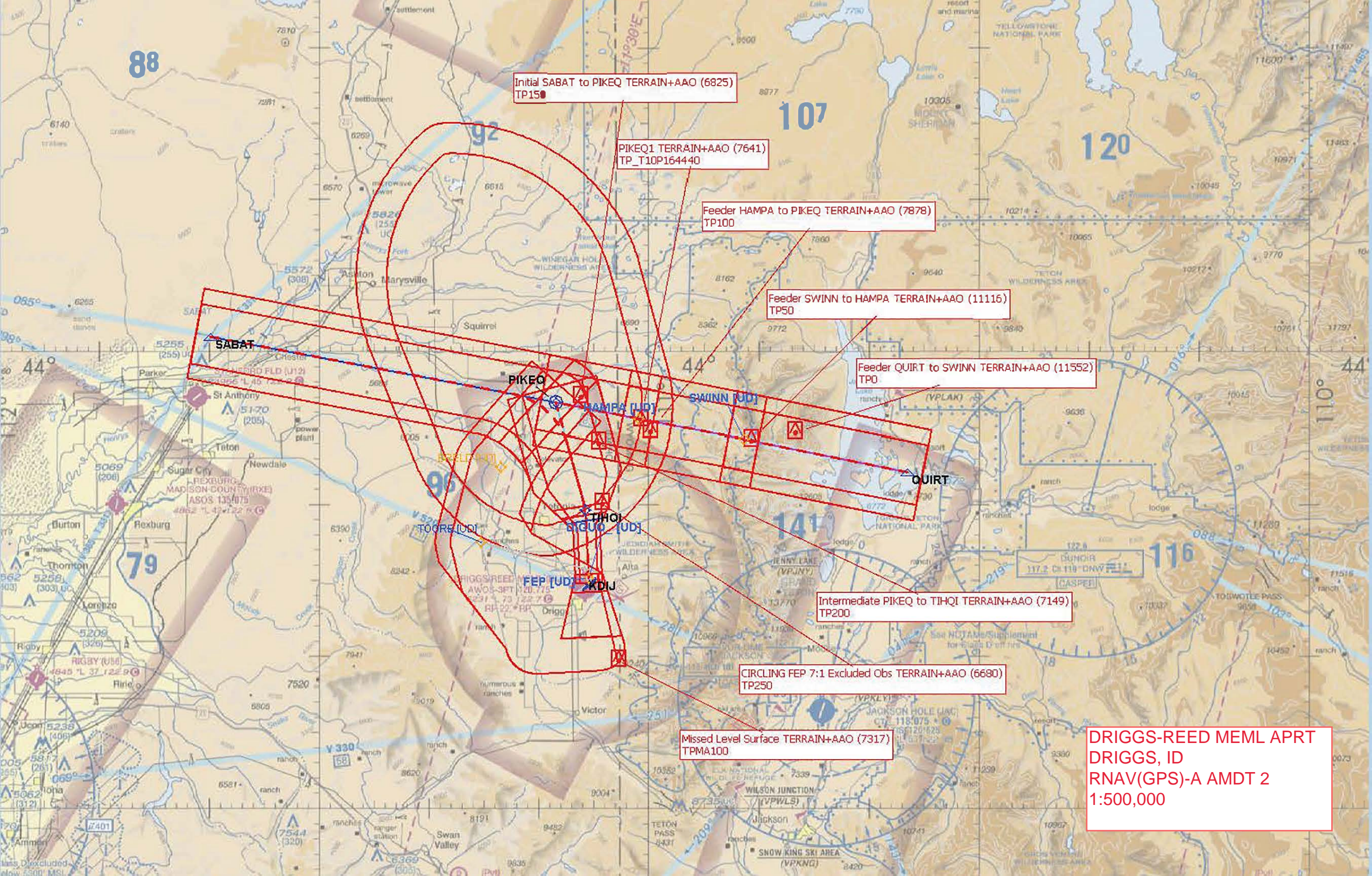
NW-1, 20 FEB 2025 to 20 MAR 2025

NW-1, 20 FEB 2025 to 20 MAR 2025



CATEGORY	A	B	C	D
C CIRCLING	6900-1 669 (700-1)		6900-1¾ 669 (700-1¾)	7400-3 1169 (1200-3)

MIRL Rwy 4-22 **0**
REIL Rwy 22 **0**



Initial SABAT to PIKEQ TERRAIN+AAO (6825)
TP150

PIKEQ1 TERRAIN+AAO (7641)
TP_T10P164440

Feeder HAMPA to PIKEQ TERRAIN+AAO (7878)
TP100

Feeder SWINN to HAMPA TERRAIN+AAO (11116)
TP50

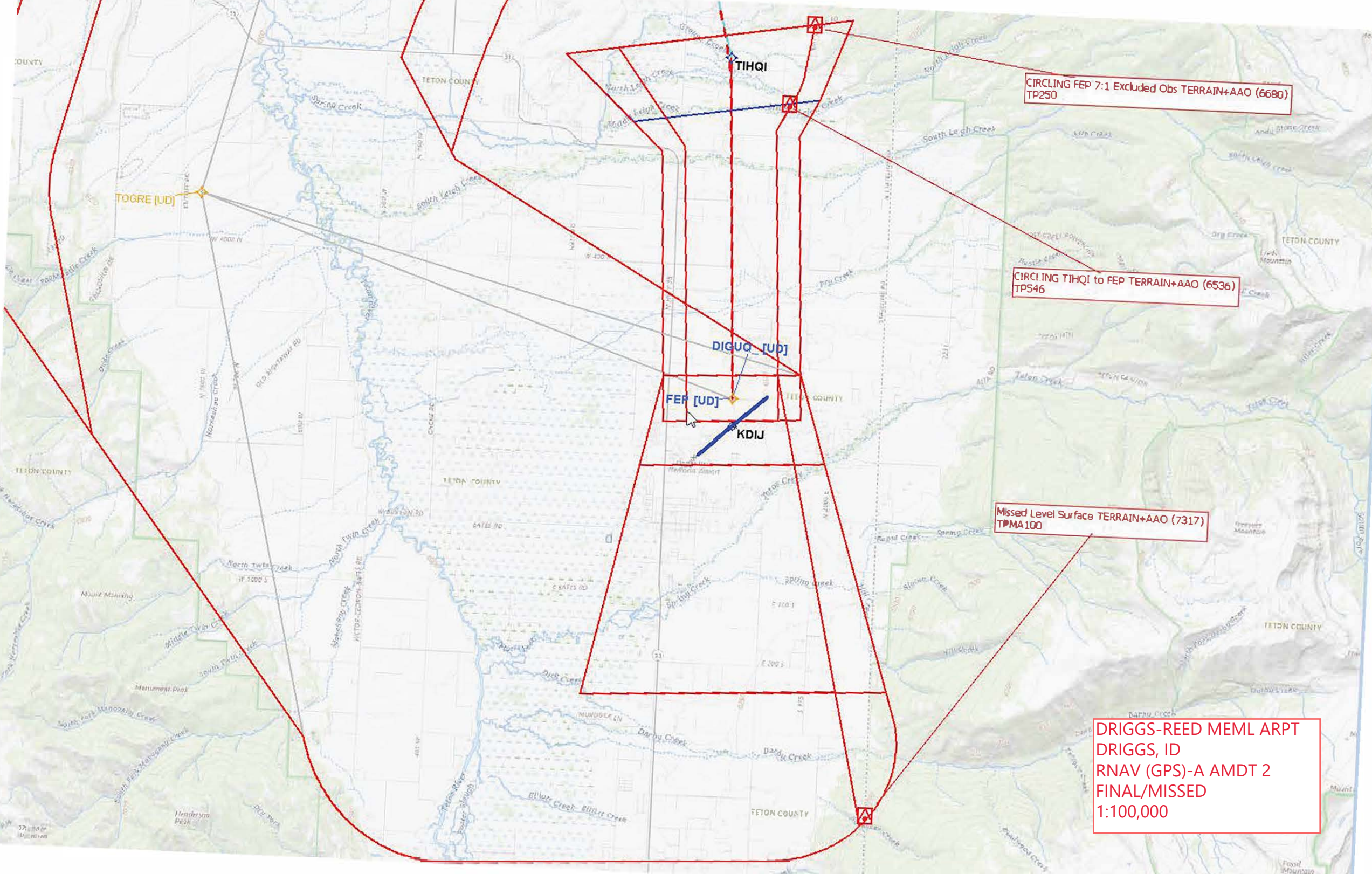
Feeder QUIRT to SWINN TERRAIN+AAO (11552)
TPO

Intermediate PIKEQ to TIHQI TERRAIN+AAO (7149)
TP200

CIRCLING FEP 7:1 Excluded Obs TERRAIN+AAO (6680)
TP250

Missed Level Surface TERRAIN+AAO (7317)
TPMA100

DRIGGS-REED MEML APRT
DRIGGS, ID
RNAV(GPS)-A AMDT 2
1:500,000



CIRCLING FEP 7:1 Excluded Obs TERRAIN+AAO (6680)
TP250

CIRCLING TIHQI to FEP TERRAIN+AAO (6536)
TP546

Missed Level Surface TERRAIN+AAO (7317)
TPMA100

DRIGGS-REED MEML ARPT
DRIGGS, ID
RNAV (GPS)-A AMDT 2
FINAL/MISSED
1:100,000

TOGRE [UD]

TIHQI

DIGUQ [UD]

FER [UD]

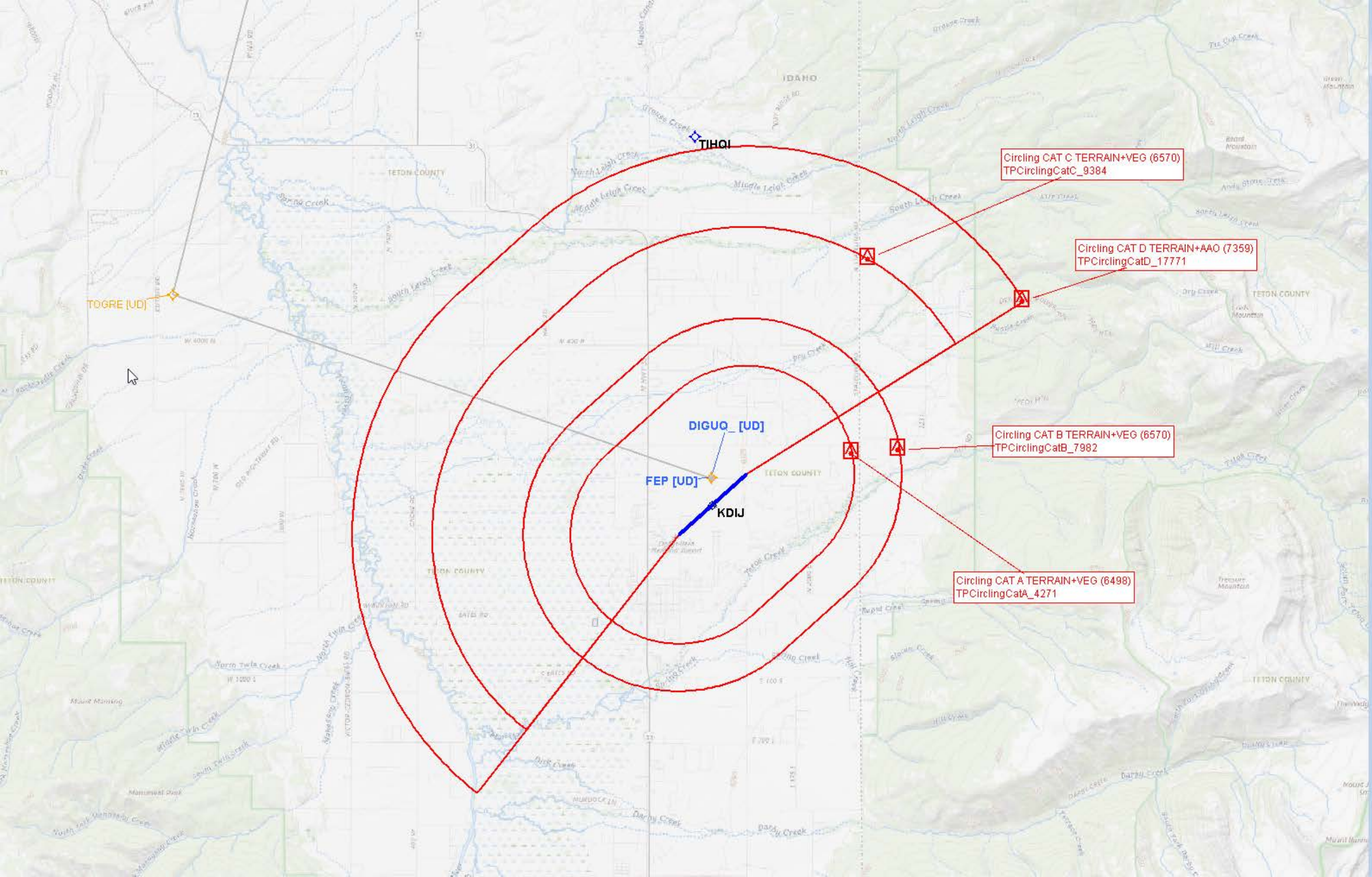
KDIJ

TETON COUNTY

TETON COUNTY

TETON COUNTY

TETON COUNTY



Circling CAT C TERRAIN+VEG (6570)
TPCirclingCatC_9384

Circling CAT D TERRAIN+AAO (7359)
TPCirclingCatD_17771

Circling CAT B TERRAIN+VEG (6570)
TPCirclingCatB_7982

Circling CAT A TERRAIN+VEG (6498)
TPCirclingCatA_4271

TIHQI

TOGRE [UD]

DIGUQ [UD]

FEP [UD]

KDIJ

IDAHO

TETON COUNTY

TETON COUNTY

TETON COUNTY

TETON COUNTY

TETON COUNTY

MOUNT J...