

Flight Procedures Cover Page	Task Action: Abbreviated Amendment	Task Type: IAP	Estimated Chart Date: 09/05/2024	APWS Task ID: B2731C7C845149ABA6CF5F3E7FB5CF9B	APWS Project ID: 5D2352028F494E908D736A6E572A3112
Procedure: RNAV (GPS) RWY 17 AMDT 1A		Enroute: NO	Specialist: Darden, Michael		Agreement Number:
Airport ID: KCON			Airport City: CONCORD		State: NH
Facility ID:	Facility Type:	Flight Inspection Remark Type:			

Procedure Comments:

ACTIVE DATA USED FOR KCON AIRPORT AND RUNWAYS

PROCESSED IAW TECHNICAL SUPPORT GROUP (AJF-17) MEMO DATED 07/07/2021 GUIDANCE FOR PROCEDURAL CHANGES REQUIRING FLIGHT INSPECTION/VALIDATION

CON VOR MON NON-DEPENDENCY.

CONTACT DAVID DANNER, AJV-A421, 405-954-5077.



APP CRS	Rwy Idg	5364
171°	TDZE	339
	Apt Elev	342

RNAV (GPS) RWY 17

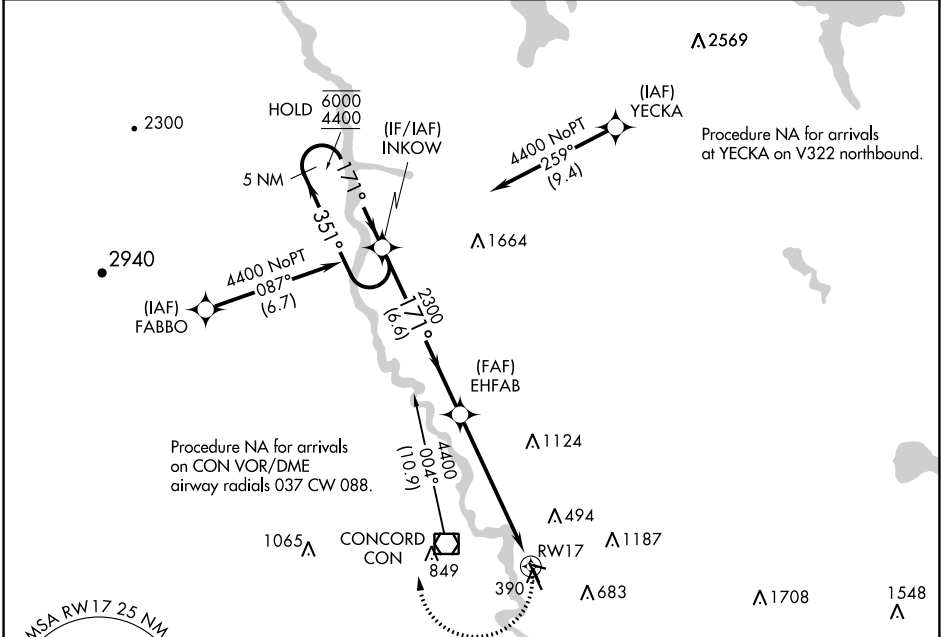
CONCORD MUNI (CON)

RNP APCH.

- ▼ Straight-in Rwy 17 NA at night, Circling Rws 12, 17, 30 NA at night.
- ▲ Rwy 17 helicopter visibility reduction below 1 SM NA.

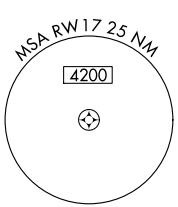
MISSED APPROACH: Climbing right turn to 4400 direct INKOW and hold, continue climb-in-hold to 4400.

ASOS	BOSTON APP CON	CLNC DEL	UNICOM
132.325	127.35 269.075	133.65	122.7 (CTAF) 0

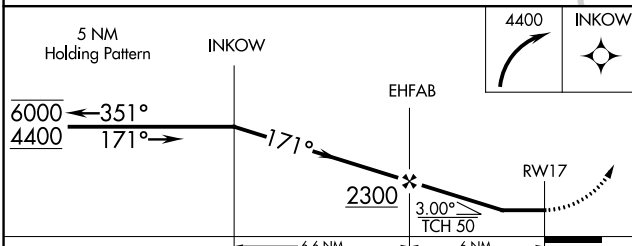
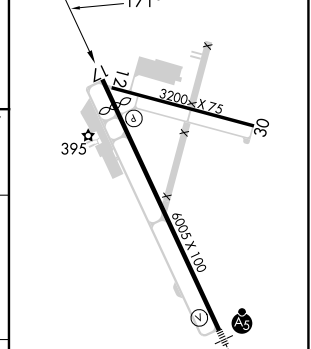


NE-1, 25 JAN 2024 to 22 FEB 2024

NE-1, 25 JAN 2024 to 22 FEB 2024



ELEV	342	TDZE	339
------	-----	------	-----



CATEGORY	A	B	C	D
LNAV MDA	1000-1	661 (700-1)	1000-1 $\frac{7}{8}$	661 (700-1 $\frac{7}{8}$)
CIRCLING	1000-1 658 (700-1)	1080-1 738 (800-1)	1500-3	1158 (1200-3)

MIRL Rwy 12-30 0
HIRL Rwy 17-35 0