
4-20-23 Team 2b

LA 45LA COPTER (GPS) 146 ORIG (8LA4)

11-18-22 PRB RESULTS: Returned Pre-PRB

V1 IS BEING RETURNED PRE-PRB FOR THE FOLLOWING:

- 1) MULTIPLE AIRPORTS/HELIPORTS CANNOT BE LISTED IN PACKAGE. EACH AIRPORT/HELIPORT REQUIRE SEPARATE SWIMS ENTRIES. **Process against LS52 and 45LA in SWIMS**
- 2) 8260-7A – ENTER THE OFFICIAL AIRPORT/HELIPORT NAME AS DERIVED FROM NASR (NOT VARIOUS) IAW 8260.19I 8-6-2 A. **Process against LS52 and 45LA in SWIMS**
- 3) 8260-7A – ENTER ONE (ONLY) APPLICABLE ICAO OR FAA AIRPORT IDENTIFIER AS DERIVED FROM NASR. **Only one ID on forms. Used LS52. In APWS as 8LA4.**
- 4) 8260-7A IS SIGNED IN THE APPROVED BY SECTION FOR AFS SIGNATURE. **Please remove Lonnie's signature block**
- 5) CATEX – DOES NOT ADDRESS THIS PROCEDURE. **Coordinating with central for CATEX clarification**
- 6) NEED WAIVER CANCELLATION. **Please add and sign**

ADDITIONALLY PER COORDINATION WITH AFS, PLEASE ADD IN REMARKS SECTION OF -7 CANCELLATION

THIS CANCELS PINS PROCEDURE VENICE, LA, VARIOUS HELIPORTS, FACILITY IDENTIFIER: GPS, COPTER GPS 146, ORIGINAL AND TO THE HELIPORTS SERVED, PHI VENICE HELIPORT (7R1), CHEVRON USA INC. SEAPLANE BASE (8LA1), AIR LOGISTICS (VENICE) N HELIPORT (45LA) ERA HELICOPTER VENICE BASE HELIPORT (LS52) AND EVERGREEN HELICOPTERS INTERNATIONAL, INC. (0LS3). CONCURRENT WITH PINS PROCEDURE LS52 COPTER RNAV (GPS) 151

Flight Procedures Cover Page	Task Action: Cancellation	Task Type: IAP	Estimated Chart Date: 04/20/2023	APWS Task ID: B29F8A44505F43A0A32EE0202EA9A641	APWS Project ID: 657D97D5BB224127BB7CD122058608E6
Procedure: COPTER GPS 146 ORIG		Enroute: NO	Specialist: Dean, Kelly		Agreement Number:
Airport ID: 8LA4			Airport City: VENICE		State: LA
Facility ID:	Facility Type:	Flight Inspection Remark Type:			
<div>Procedure Comments: PROCEDURE CANCELED. REPLACED BY COPTER RNAV (GPS) 151, ORIG. 8260-1 CANCELED: REDUCE VISIBILITY FROM 3/4 SM TO 1/2 SM. REPLACED BY NEW 8260-1 WAIVER REQUEST FOR COPTER RNAV (GPS) 151, ORIG. 11/29/22: THIS IS AN UPDATED COPY OF THE FORM DEVELOPED ON 06/11/19. 1. ADDED EXPLANATION FOR AFS IN CHANGES-REASONS. 2. REMOVED APPROVED BY NAME. 3. ADDED '8260-1 CANCELED: REDUCE VISIBILITY FROM 3/4 SM TO 1/2 SM. REPLACED BY NEW 8260-1 WAIVER REQUEST FOR COPTER RNAV (GPS) 151, ORIG' TO PROCEDURE COMMENTS ON FLIGHT PROCEDURE COVER PAGE. CONTACT ERIK SUSKI (405) 954-7331.</div> <div>QUALITY 49 CHECKED</div>					

VENI AREA HELIPORTS

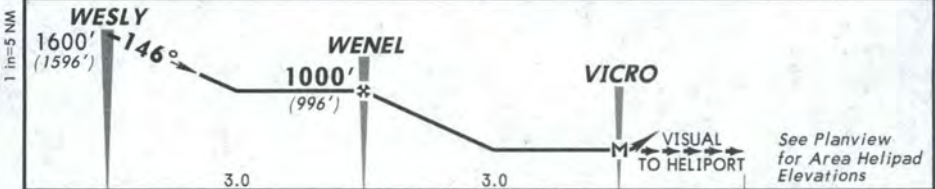
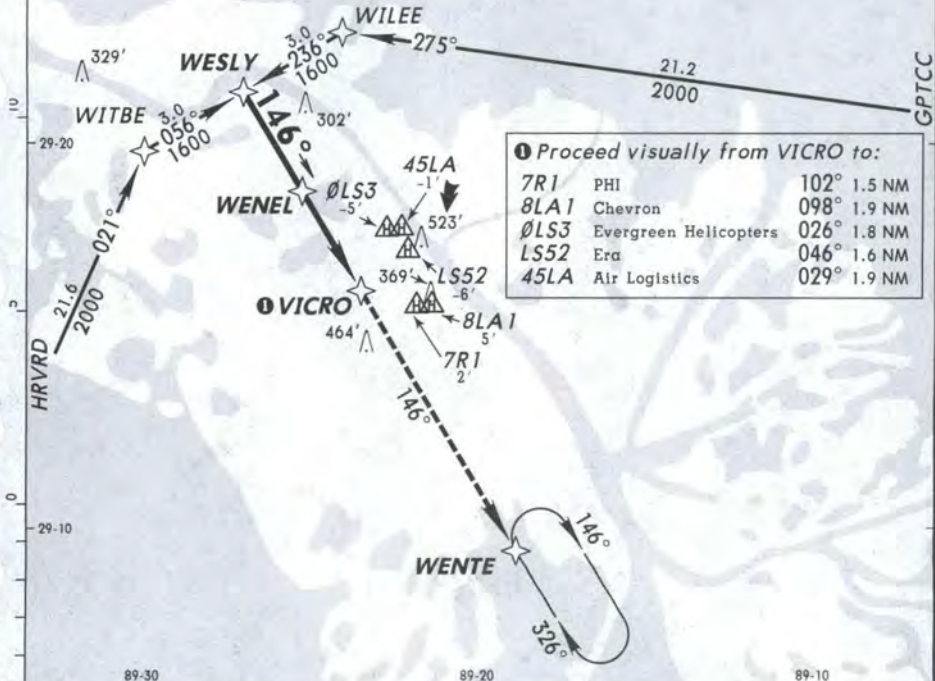
Petroleum Helicopters, Inc.

2 OCT 98

18-7

VENICE, LA
COPTER GPS-146°

HOUSTON Center 134.9			PHI Advisory Service CTAF 123.0		
GPS	Final Apch Crs 146°	Minimum Alt WENEL 1000' (996')	MDA(H) (CONDITIONAL) 300' (296')	See Planview for Area Helipad Elevations	<div>1600'</div> <div>MSA VICRO</div>
MISSED APCH: Climb to 1600' via 146° course to WENTE and hold.					
1. Special authorization required. 2. Obtain altimeter setting on PHI Advisory Service (123.0); if not received, use New Orleans Intl altimeter setting. 3. Arm approach mode 30 NM prior to VICRO. 4. Limit final and missed approach maximum airspeed to 70 KIAS. 5. Proceed VFR from MAP to landing area, or conduct missed approach procedure.					



								1600'		via 146°		WENTE			
								↑							
MAP at VICRO															
LANDING H-146°												TAKE-OFF		ALTERNATE	
With Local Altimeter Setting						With New Orleans Intl Altimeter Setting									
MDA(H) 300' (296')						MDA(H) 460' (456')									
DAY						NIGHT									
1/2						1						STD		NA	
COPTER															

CHANGES: New procedure.

© JEPPESEN SANDERSON, INC., 1998. ALL RIGHTS RESERVED.

FLIGHT PROCEDURES STANDARDS

DATE:

JUL 17 1998

1. Flight Procedure Identification:

VENICE, LA Specified Heliports, Special Copter GPS 146

2. Waiver Required and Applicable Standard:

Waiver of 3/4-mile visibility approach minimum for point in space approach stated in 8260.42A para. 16a(2) and TERPS Chapter 11 paragraph 1127c.

3. Reason for Waiver (*Justification for nonstandard treatment*):

Waiver required to allow 1/2-mile visibility for point in space approach during the day.

TITLE 14 CFR Part 135.205 authorizes VFR helicopter operations with 1/2 mile visibility during the day and 1 mile visibility at night.

4. Equivalent Level of Safety Provided:

This special procedure will be authorized by Operation Specifications for Title 14, CFR Part 135 operators and by Letter of Authorization for Title 14, CFR Part 91 operators.

Each operator shall provide training to each pilot in procedures for transitioning from instrument approach flight speeds to visual flight speeds that will allow the pilot to see and avoid geographic features and obstructions from the missed approach point to the landing site. Pilot training shall provide familiarization with the surrounding geographic features and obstructions in the approach and landing areas.

On FAA Form 8260-7, Additional Flight Data Section, insert the following:

Chart: All obstacles within ten (10) nautical miles of the missed approach point higher than the minimum descent altitude.

On FAA Form 8260-7, Notes, insert the following:

Special Authorization Required.

5. How Relocation or Additional Facilities Will Affect Waiver Requirement:

Relocation or additional facilities will not affect this waiver.

6. Coordination With User Organizations (*Specify*): ZHU ARTCC, AVN 130, AVN 160, ASW-250, FTW FPO, AIR LOGISTICS, CHEVRON, ERA, EVERGREEN, MOBIL, Noble Drilling Services, Inc. and PHI HELICOPTER ORGANIZATIONS.

7. SUBMITTED BY

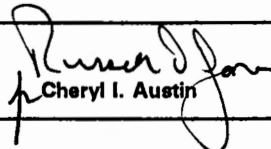
Office Identification:

AVN-100

Title:

Manager

Signature:


Cheryl I. Austin

8. REGIONAL ENDORSEMENT		Approval Recommended	
		Not Recommended	
		Not Required	
Comments:			
Date:	Routing Symbol:	Signature:	
9. AVN ENDORSEMENT		Approval Recommended	
		Not Recommended	
		Not Required	
Comments:			
Date:	Routing Symbol:	Signature:	
10. AFS ACTION		XX	Approved
			Disapproved
			Not Required
Comments: Approved based on the equivalent level of safety provided in block 4. This waiver is canceled effective April 20, 2023. Associated special procedure COPTER GPS 146, ORIG will also be canceled on the effective date. (Signature) _____ (Title, Office Symbol) _____			
Date: 8/4/98	Routing Symbol: AFS-400	Signature: <i>Ray P. Martindale</i> FOR Robert A. Wright, Manager Flight Technologies and Procedures Division	

ORIGINAL

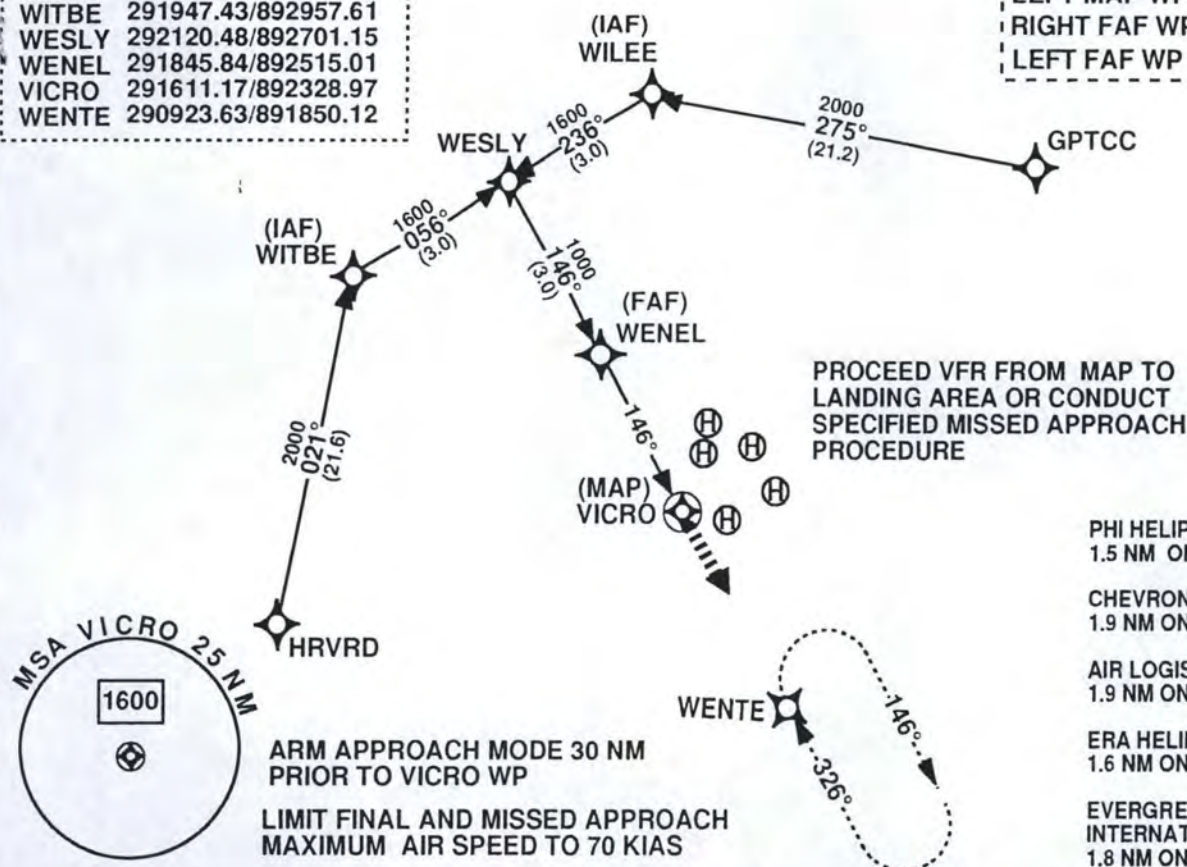
COPTER GPS 146

VENICE, LA

GPTCC 292000.00/890000.00
 HRVRD 290000.00/894000.00
 WILEE 292253.47/892404.60
 WITBE 291947.43/892957.61
 WESLY 292120.48/892701.15
 WENEL 291845.84/892515.01
 VICRO 291611.17/892328.97
 WENTE 290923.63/891850.12

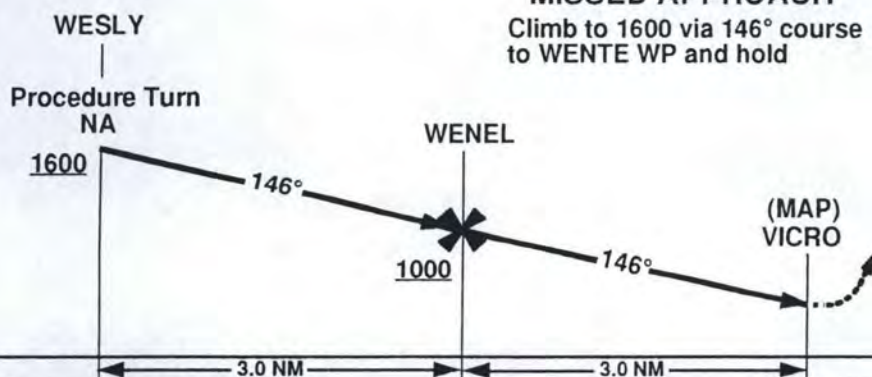
OLD

BRACKET POINTS
 RIGHT MAP WP = 291543.31/892341.89
 LEFT MAP WP = 291608.09/892254.85
 RIGHT FAF WP = 291813.33/892536.75
 LEFT FAF WP = 291847.42/892432.05



MISSED APPROACH

Climb to 1600 via 146° course to WENTE WP and hold



National
Flight Procedures
Office

AVN-130
(405)954-6658

FOR FLIGHT INSPECTION
PURPOSES ONLY,
ALWAYS REFER TO THE
8260 FORM FOR OFFICIAL
INFORMATION

CATEGORY	COPTER	B	C	D	E
H-146	300 - 1/2" 296 (300 - 1/2")		NA		
NEW ORLEANS (MOISANT FIELD) ALTIMETER SETTING MINIMUMS					
H-146	460 - 1/2" 456 (500 - 1/2")		NA		

Obtain altimeter setting on PHI Advisory Service (123.0);
if not received, use New Orleans (Moisant Field) altimeter setting.

*Night visibility minimum 1 mile.

Special authorization required.

NA

COPTER GPS 146

ORIGINAL

VENICE, LA