

Flight Procedures Cover Page	Task Action: FLIGHT CHECK	Task Type: IAP	Estimated Chart Date: 05/14/2026	APWS Task ID: B3978DD5638846F291044CE6A806ED44	APWS Project ID: 2B20A859A3A4455FB6CAD1C7A73870E1
Procedure: ILS OR LOC RWY 5 AMDT 16		Enroute: YES	Specialist: Weston, Daniel		Agreement Number:
Airport ID: KFWA			Airport City: FORT WAYNE		State: IN
Facility ID: HVD	Facility Type: ILS	Flight Inspection Remark Type: New FC Slot			

Procedure Comments:
ACTIVE AIRNAV DATA USED.

CONTACT RAKE MCGRAW AJV-A422 405-954-8711

03/05/26: THIS IS AN UPDATED COPY OF THE FORMS DEVELOPED ON 11/04/25.

1. REQUIRED EFFECTIVE DATE CHANGED TO 05/14/2026.
2. TERMINAL ROUTE CHMLY TO JIVBU COURSE CHANGED TO 334.26 (HDG) & 050.26 (I-HVD).
3. PROFILE LINE 5 CHANGED TO DIST TO THLD FROM PFAF: 5.43.
4. FLIGHT CHECKED BY CHANGED TO PENDING

QUALITY
35
CHECKED

QUALITY
38
CHECKED

QUALITY
38
CHECKED

QUALITY
40
CHECKED

LOC I-HVD 111.9	APP CRS 050°	Rwy Ldg 11981
		TDZE 815
		Apt Elev 815

OLD

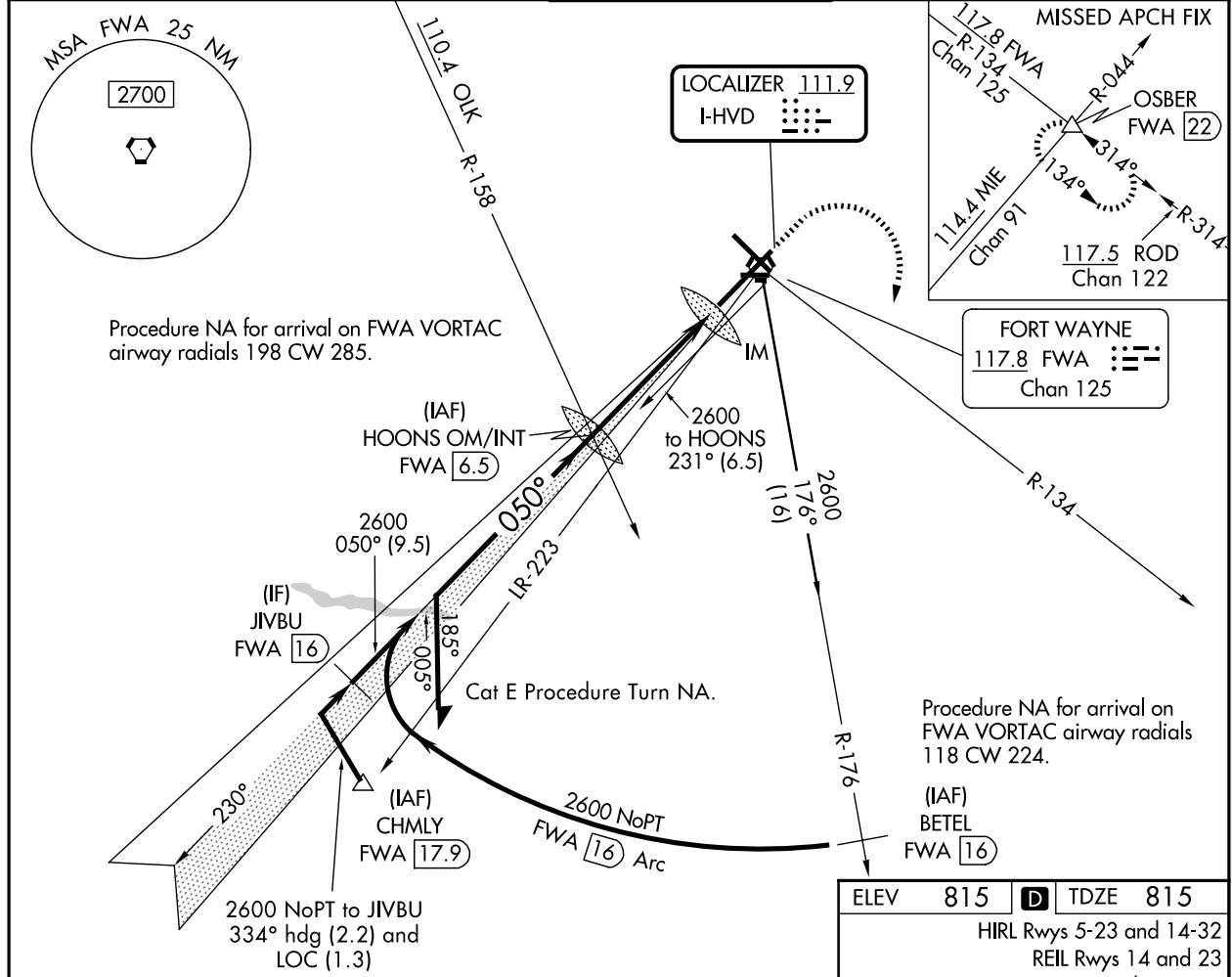
ILS or LOC RWY 5

FORT WAYNE INTL (FWA)

ASR For inop ALS, increase S-ILS 5 Cat E visibility to RVR 4000 and S-LOC 5 Cats C, D, and E visibility to 1 3/8 SM.

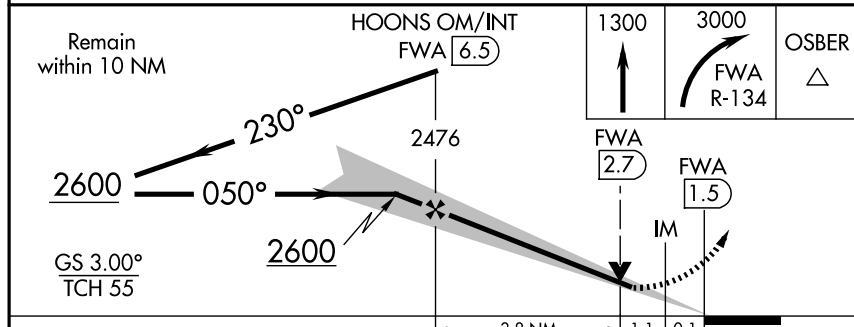
ALS F-2 MISSED APPROACH: Climb to 1300 then climbing right turn to 3000 on FWA R-134 to OSBER INT/FWA 22 DME and hold.

ATIS 121.25 360.825	FORT WAYNE APP CON 127.2 284.6	FORT WAYNE TOWER 119.1 269.325	GND CON 121.9 348.6	CLNC DEL 124.75
-------------------------------	--	--	-------------------------------	---------------------------



EC-2, 02 OCT 2025 to 30 OCT 2025

EC-2, 02 OCT 2025 to 30 OCT 2025



ELEV	815	D	TDZE	815
HIRL Rwy 5-23 and 14-32 REIL Rwy 14 and 23 TDZ/CL Rwy 5				
FAF to MAP 5 NM				
Knots	60	90	120	150
Min:Sec	5:00	3:20	2:30	2:00
			180	1:40

CATEGORY	A	B	C	D	E
S-ILS 5	1015/18 200 (200-1/2)				
S-LOC 5	1300/24	485 (500-1/2)	1300/50	485 (500-1)	
CIRCLING	1300-1	485 (500-1)	1420-1 3/4	1520-2 1/4	1520-2 1/2
			605 (700-1 3/4)	705 (800-2 1/4)	705 (800-2 1/2)

