

Flight Procedures Cover Page	Task Action: Abbreviated Amendment	Task Type: IAP	Estimated Chart Date: 02/20/2025	APWS Task ID: B47931ABF1674BE2B72188EAF9573A61	APWS Project ID: ADB34B32F4FF4A808582E18124B93D32
Procedure: ILS Z OR LOC Z RWY 13R AMDT 9C		Enroute: NO	Specialist: Johnson, Raymond		Agreement Number:
Airport ID: KDFW			Airport City: DALLAS-FORT WORTH		State: TX
Facility ID: LWN	Facility Type: ILS	Flight Inspection Remark Type:			

Procedure Comments:

ACTIVE DATA USED FOR KDFW.
 PROCESSED IAW TECHNICAL SUPPORT GROUP (AJF-17) MEMO DATED 07/07/2021 GUIDANCE
 FOR PROCEDURAL CHANGES REQUIRING FLIGHT INSPECTION/VALIDATION.
 CONTACT ALLAN WILL (405)954-6103.

12/31/24: THIS IS A CORRECTED COPY OF THE FORM APPROVED ON 12/16/24.
 1. CORRECTED PROCEDURE NAME FROM ILS Z RWY 13R (CAT II) TO ILS Z RWY 13R (SA CAT II).



OLD

ILS or LOC RWY 13R
DALLAS-FORT WORTH INTL (DFW)

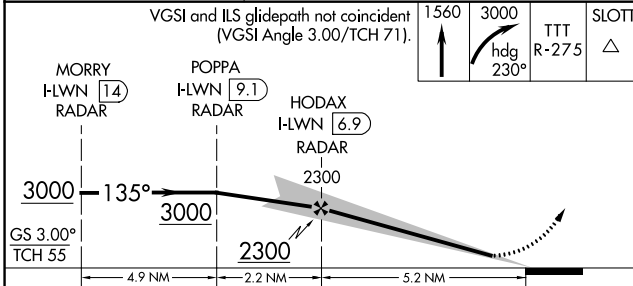
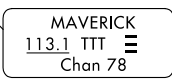
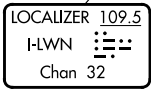
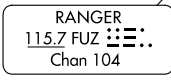
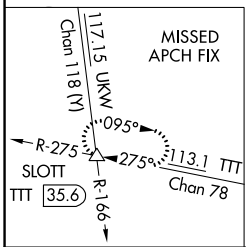
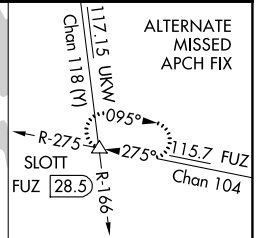
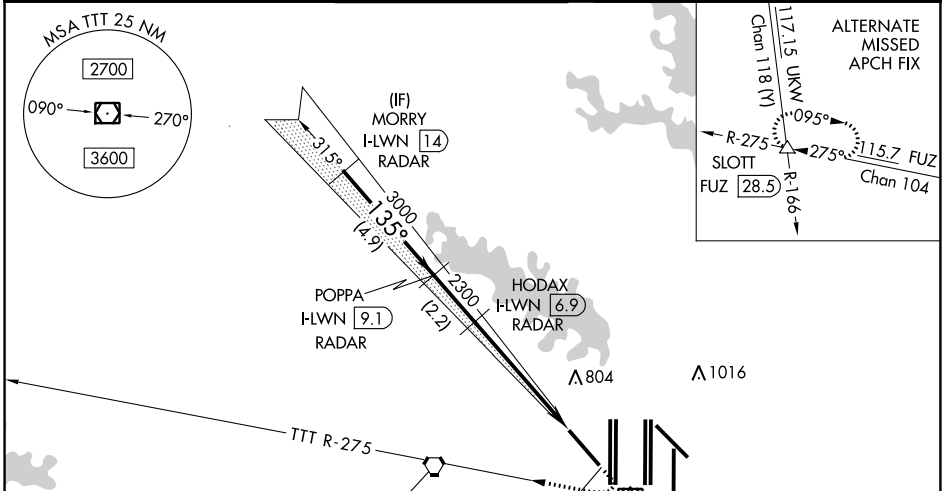
LOC/DME I-LWN 109.5 Chan 32	APP CRS 135°	Rwy Idg TDZE Apt Elev 9300 591 607
---	------------------------	--

RADAR required for procedure entry.
DME or RADAR required for LOC only.

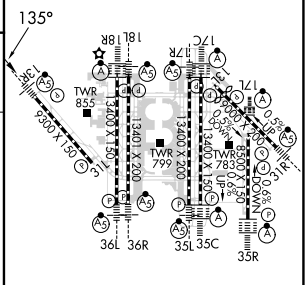


MISSED APPROACH: Climb to 1560 then climbing right turn to 3000 on heading 230° and TTT VOR/DME R-275 to SLOTT INT/TTT 35.6 DME and hold.

D-ATIS ARR 123.775 DEP 135.925	REGIONAL APP CON 133.15 118.1	DFW TOWER 126.55 127.5 EAST 124.15 134.9 WEST	GND CON 121.65 121.8 EAST 121.85 WEST	CLNC DEL 128.25	CPDLC
--	---	---	---	---------------------------	-------



ELEV 607	D	TDZE 591
----------	---	----------



CATEGORY	A	B	C	D
S-ILS 13R	791/18		200 (200-½)	
S-LOC 13R	1240/24	649 (700-½)	1240-13/6	649 (700-13/6)

HIRL all Rwys				
REIL Rws 13L and 31L				
TDZ/CL all Rws except 13L, and 31L				
FAF to MAP 5.2 NM				
Knots	60	90	120	150 180
Min:Sec	5:12	3:28	2:36	2:05 1:44

OLD
32°41'1-97°0'W

DALLAS-FORT WORTH INTL (DFW)
ILS or LOC RWY 13R

SC-2, 18 APR 2024 to 16 MAY 2024

SC-2, 18 APR 2024 to 16 MAY 2024