

Flight Procedures Cover Page	Task Action: Amendment	Task Type: SID	Estimated Chart Date: 08/10/2023	APWS Task ID: B50B6E270E83407BAD634C980E62B6E1	APWS Project ID: 11C76B9097B143C5A299F0FF11EA20A0
Procedure: SID WATFO SIX (RNAV) DEPARTURE		Enroute: NO	Specialist: Vega, Ana		Agreement Number:
Airport ID: 6R3			Airport City: CLEVELAND		State: TX
Facility ID:	Facility Type:	Flight Inspection Remark Type:			

Procedure Comments:

Processed IAW Technical Support Group (AJF-17) Memo dated 07/07//2021, Guidance for Procedural Changes Requiring Flight Inspection/Validation.

ABBREVIATED AMENDMENT COMPLETED USING ACTIVE DATA.

CLEAR NOTAM FDC 2/9657.

CONTACT MARK ADAMS 405-954-9946.

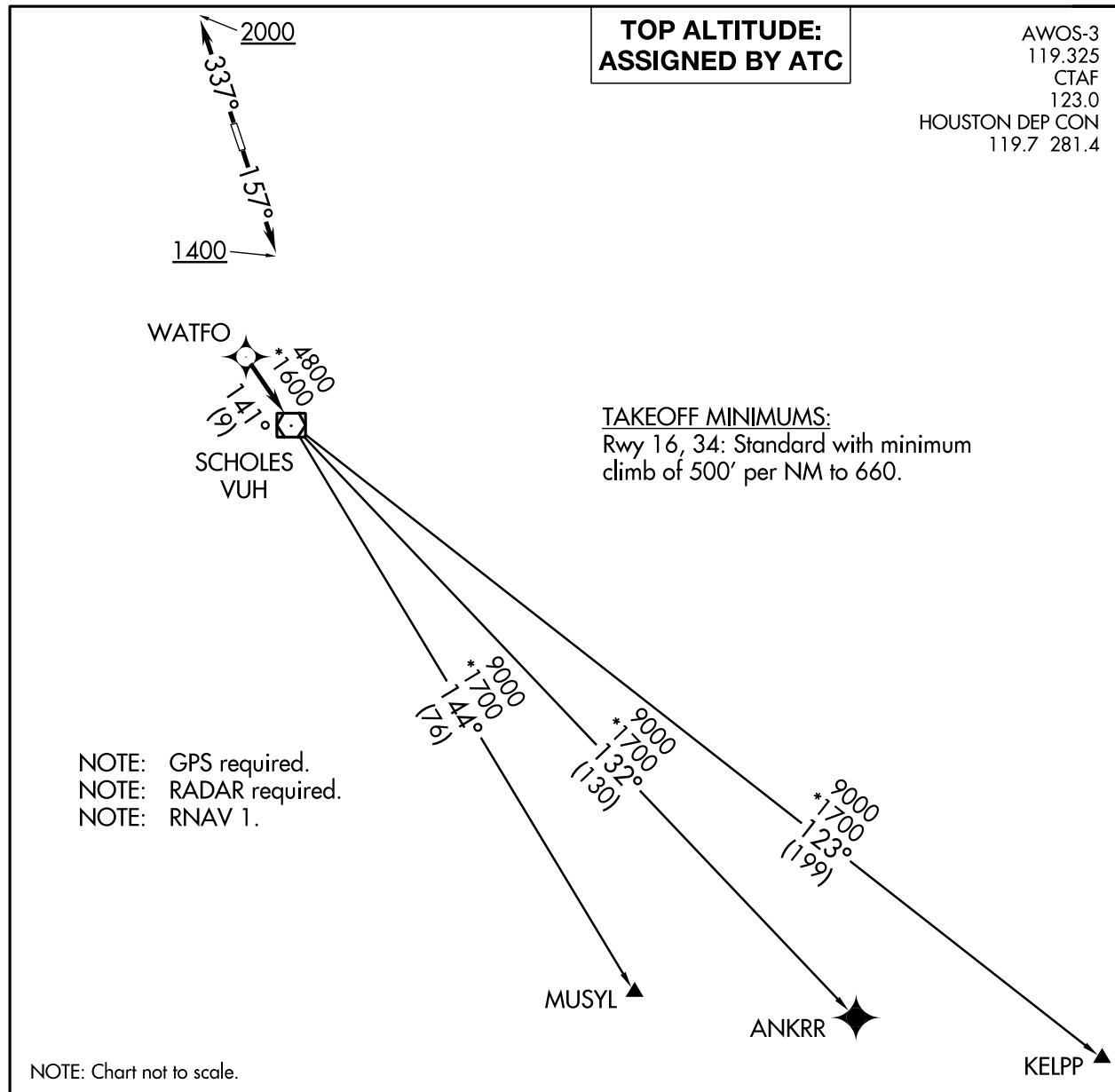


Digitally signed by
MARK D ADAMS
May 04, 2023



WATFO FIVE DEPARTURE (RNAV)

OLD



SC-5, 26 JAN 2023 to 23 FEB 2023

SC-5, 26 JAN 2023 to 23 FEB 2023



DEPARTURE ROUTE DESCRIPTION

TAKEOFF RWY 16: Climb on heading 157° to 1400, for RADAR vectors to WATFO, thence. . . .

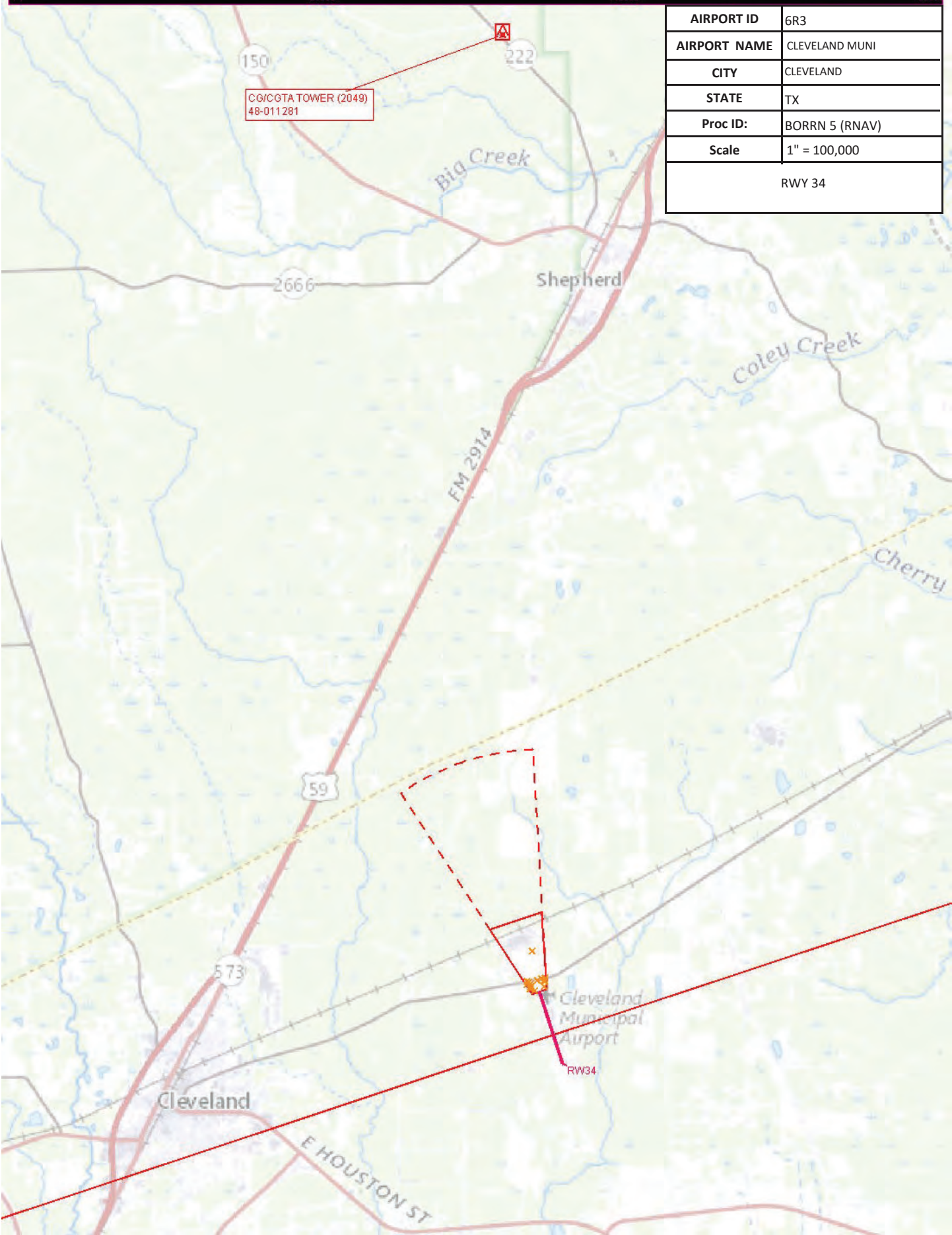
TAKEOFF RWY 34: Climb on heading 337° to 2000, for RADAR vectors to WATFO, thence. . . .

. . . .on track 141° to VUH VOR/DME, then on (transition). Maintain ATC assigned altitude. Expect filed altitude 10 minutes after departure.

ANKRR TRANSITION (WATFO5.ANKRR)

KELPP TRANSITION (WATFO5.KELPP)

MUSYL TRANSITION (WATFO5.MUSYL)



AIRPORT ID	6R3
AIRPORT NAME	CLEVELAND MUNI
CITY	CLEVELAND
STATE	TX
Proc ID:	BORRN 5 (RNAV)
Scale	1" = 100,000
RWY 34	

AIRPORT ID	6R3
AIRPORT NAME	CLEVELAND MUNI
CITY	CLEVELAND
STATE	TX
Proc ID:	BORRN 5 (RNAV)
Scale	1" = 500,000
RWY 34	

