

MINNEAPOLIS, MINNESOTA

AL-264 (FAA)

FIG

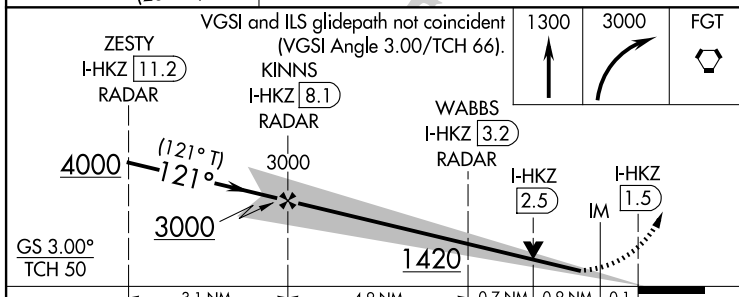
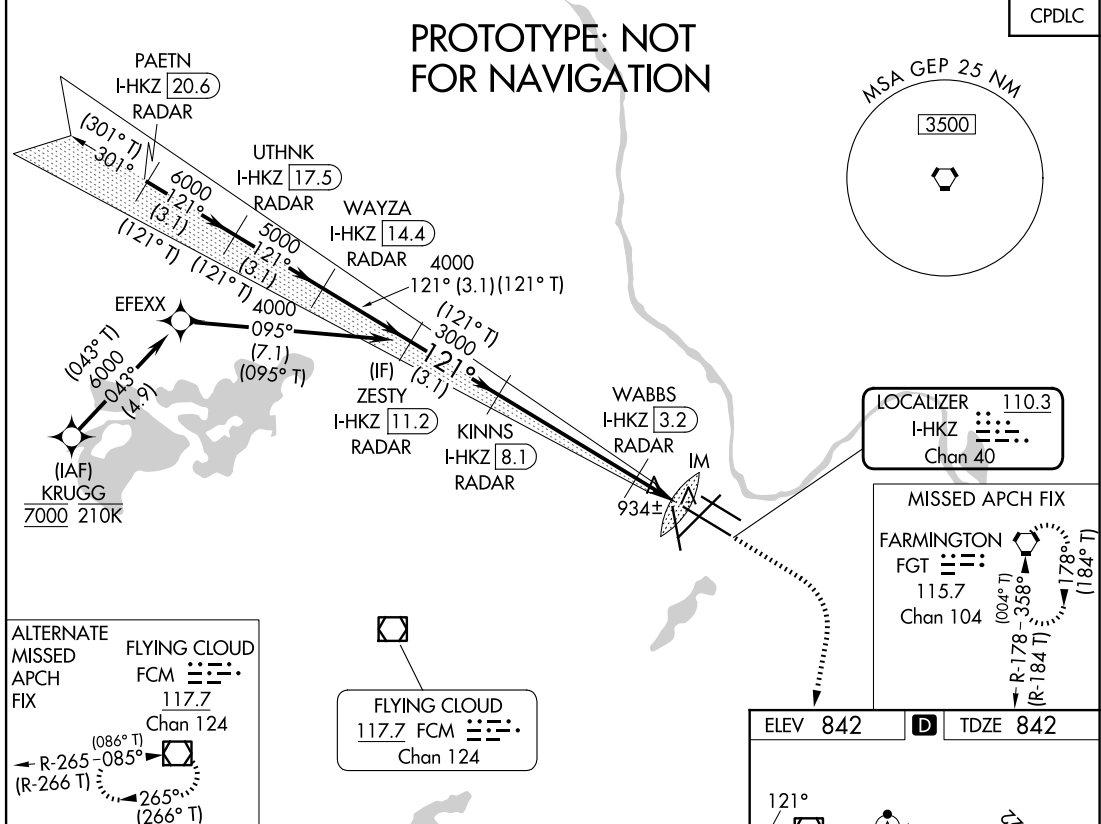
LOC/DME I-HKZ <b>110.3</b> Chan <b>40</b>	APP CRS <b>121°</b>	Rwy Ldg <b>10000</b> TDZE <b>842</b> Apt Elev <b>842</b>
---	------------------------	--

# ILS or LOC RWY 12R

MINNEAPOLIS-ST PAUL INTL/WOLD-CHAMBERLAIN (MSP)

RNP APCH - GPS. From KRUGG DME or RADAR required.	ALSIF-2	MISSED APPROACH: Climb to 1300 then climbing right turn to 3000 direct FGT VORTAC and hold.
Simultaneous approach authorized with Rwy 12L.		

D-ATIS ARR <b>135.35 239.275</b> DEP <b>120.8</b>	MINNEAPOLIS APP CON <b>118.725 335.65</b> (Rwy 35) <b>119.3 335.65</b> (12L-30R, 4-22, 17) <b>126.95 335.65</b> (12R-30L)	MINNEAPOLIS TOWER <b>123.675 273.55</b> (17-35) <b>123.95 273.55</b> (12L-30R) <b>126.7 273.55</b> (12R-30L, 4-22)	GND CON <b>N 121.8 348.6</b> <b>S 121.9 348.6</b> <b>W 127.925 348.6</b>	CLNC DEL <b>133.2</b>
---	--	---	---	--------------------------



ELEV 842	TDZE 842
HIRL all Rwys	
REIL Rwy 17	
TDZ/CL Rwys 12L, 12R, 30L, and 35	
FAF to MAP 6.6 NM	
Knots	60 90 120 150 180
Min:Sec	6:36 4:24 3:18 2:38 2:12

CATEGORY	A	B	C	D
S-ILS 12R	1042/18 200 (200-½)			
S-LOC 12R	1240/24 398 (400-½)	1240/35 398 (400-¾)		
CIRCLING	1360-1 518 (600-1)	1460-1¾ 618 (700-1¾)	1620-2½ 778 (800-2½)	

MINNEAPOLIS, MINNESOTA  
Amdt 13 FIG

MINNEAPOLIS-ST PAUL INTL/WOLD-CHAMBERLAIN (MSP)  
44°53'N-93°13'W  
**ILS or LOC RWY 12R**

AUTOMATED AL-264 ILS or LOC RWY 12R

NC-1  
23 MAY 2025  
COMPILER: CG  
REVIEWER:  
DBL CHKR:  
EFF: FIG