

MINNEAPOLIS, MINNESOTA

AL-264 (FAA)

FIG

LOC/DME I-HKZ 110.3 Chan 40	APP CRS 121°	Rwy Ldg 10000 TDZE 842 Apt Elev 842
---	------------------------	--

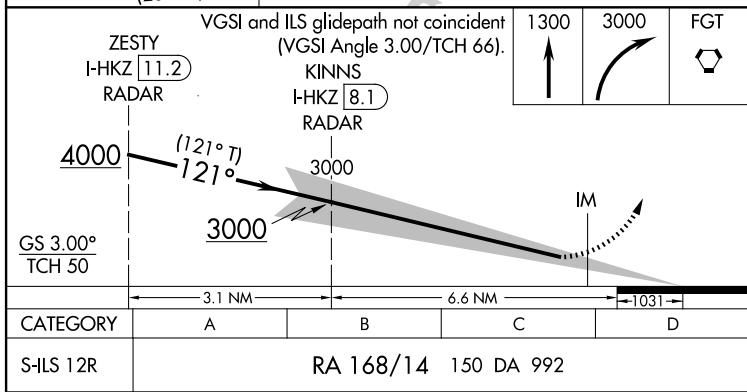
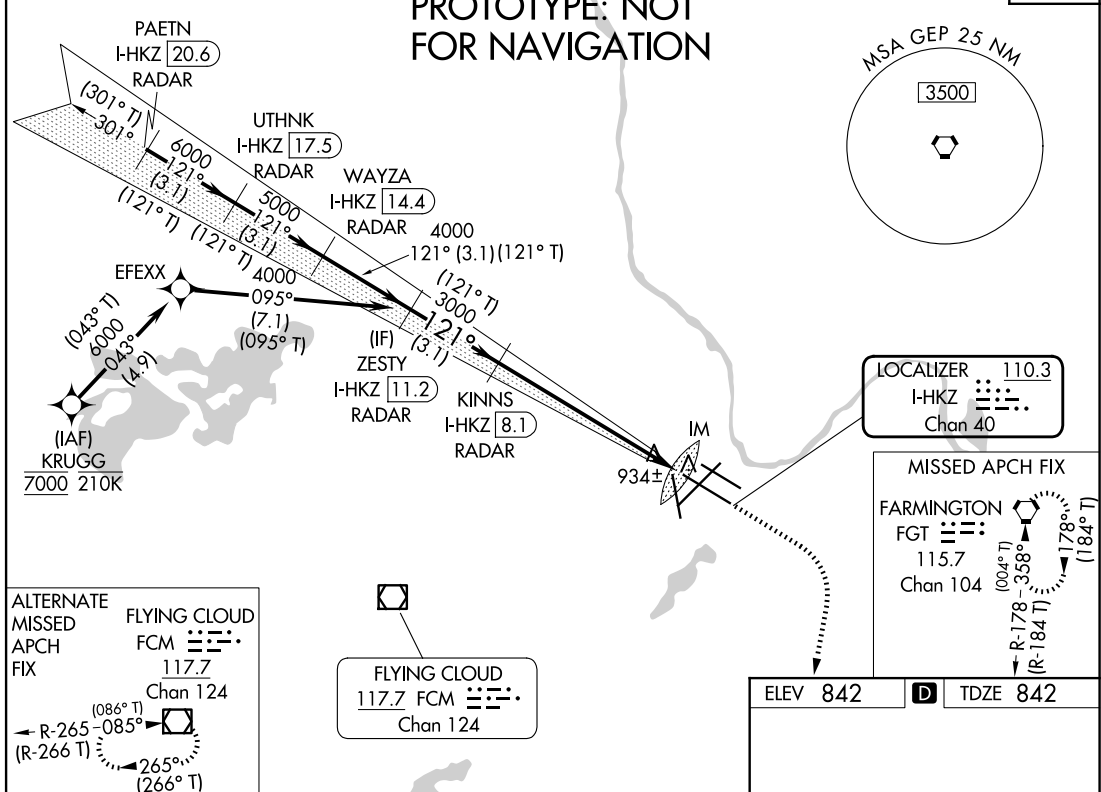
ILS RWY 12R (SA CAT I)

MINNEAPOLIS-ST PAUL INTL/WOLD-CHAMBERLAIN (MSP)

RNP APCH - GPS. From KRUGG DME or RADAR required.	ALSIF-2	MISSED APPROACH: Climb to 1300 then climbing right turn to 3000 direct FGT VORTAC and hold.
--	---------	---

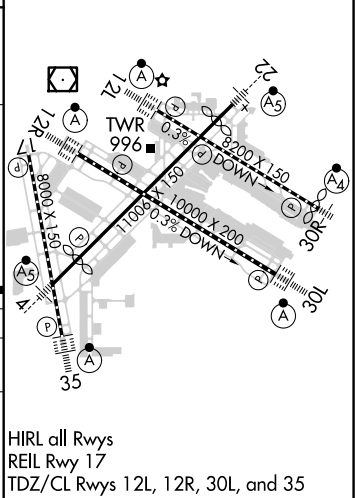
D-ATIS ARR 135.35 239.275 DEP 120.8	MINNEAPOLIS APP CON 118.725 335.65 (Rwy 35) 119.3 335.65 (12L-30R, 4-22, 17) 126.95 335.65 (12R-30L)	MINNEAPOLIS TOWER 123.675 273.55 (17-35) 123.95 273.55 (12L-30R) 126.7 273.55 (12R-30L, 4-22)	GND CON N 121.8 348.6 S 121.9 348.6 W 127.925 348.6	CLNC DEL 133.2
---	--	---	---	--------------------------

CPDLC



CATEGORY	A	B	C	D
S-ILS 12R	RA 168/14 150 DA 992			

SA CATEGORY I ILS - SPECIAL AIRCREW & AIRCRAFT CERTIFICATION REQUIRED



AUTOMATED AL-264 ILS RWY 12R (SA CAT I)

NC-1
23 MAY 2025
COMPILER: CG
REVIEWER:
DBL CHKR:
EFF: FIG

MINNEAPOLIS, MINNESOTA
Amdt 13 FIG

MINNEAPOLIS-ST PAUL INTL/WOLD-CHAMBERLAIN (MSP)
44°53'N-93°13'W
ILS RWY 12R (SA CAT I)