

Flight Procedures Cover Page	Task Action: P-NOTAM	Task Type: IAP	Estimated Chart Date: 07/09/2026	APWS Task ID: B5D9611FF2F1458995A17DEE8AD3926B	APWS Project ID: 177629F307BE41ECA69CAA253B52A8B3
Procedure: RNAV (GPS) RWY 22 AMDT 4D		Enroute: NO	Specialist: Johnson, Timothy		Agreement Number:
Airport ID: KACY			Airport City: ATLANTIC CITY		State: NJ
Facility ID:	Facility Type:	Flight Inspection Remark Type:			

Procedure Comments:

Visibility Initiative (Garmin) - Update IAP visibility minimums IAW Order 8260.3, Chapter 3, Section 3-3. Visibility Minimums.

PROCESSED IAW TECHNICAL SUPPORT GROUP (AJF-17) MEMO DATED 07/07/2021, SUBJECT: GUIDANCE FOR PROCEDURAL CHANGES REQUIRING FLIGHT INSPECTION/VALIDATION.

CONTACT: CASEY HILL (405) 954-0624.

QUALITY
6 SN 2/23/26
CHECKED

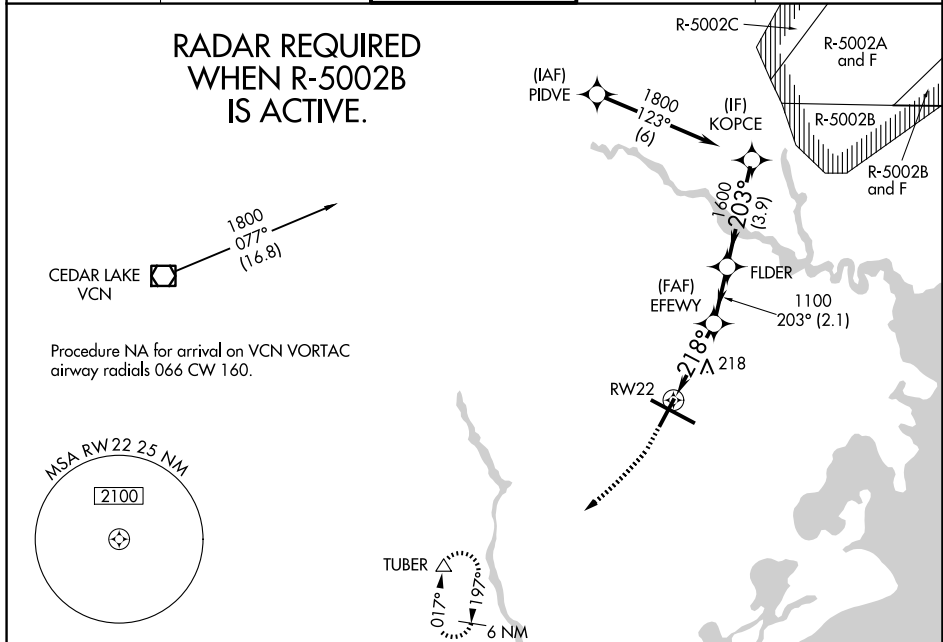
QUALITY
9
CHECKED
BEGUE

WAAS CH 53631 W22A	APP CRS 218°	Rwy Ldg TDZE Apt Elev	6145 68 75
--	------------------------	-----------------------------	---------------------------------------

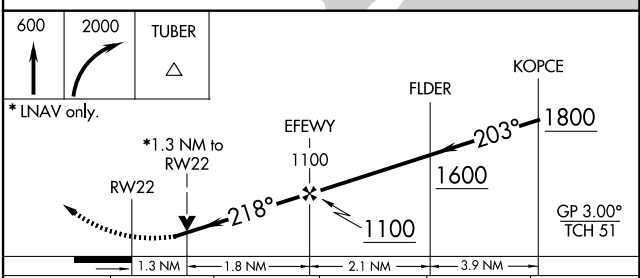
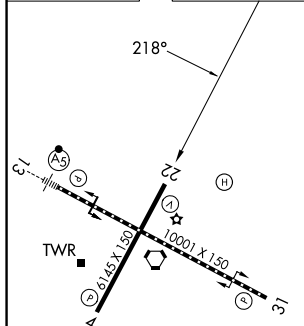
RNAV (GPS) RWY 22
ATLANTIC CITY INTL (ACY)

RNP APCH - GPS.	MISSED APPROACH: Climb to 600 then climbing right turn to 2000 direct TUBER and hold.
<p>▼ ▲</p> <p>For uncompensated Baro-VNAV systems, LNAV/VNAV NA below -14°C (7°F) or above 54°C (130°F). Rwy 22 helicopter visibility reduction below ¼ SM NA.</p>	

ATIS 125.725 316.15	ATLANTIC CITY APP CON 124.6 327.125	ATLANTIC CITY TOWER 120.3 239.0	GND CON 121.9 284.6	CLNC DEL 127.85 353.775
-------------------------------	---	---	-------------------------------	-----------------------------------



ELEV 75	D	TDZE 68
---------	----------	---------



CATEGORY	A	B	C	D	E
LPV DA	364-1		296 (300-1)		
LNAV/VNAV DA	356-7/8		288 (300-7/8)		
LNAV MDA	520-1 452 (500-1)		520-1 1/8 452 (500-1 1/8)		
CIRCLING	540-1 465 (500-1)	600-1 525 (600-1)	620-1 1/2 545 (600-1 1/2)	640-2 565 (600-2)	760-2 1/2 685 (700-2 1/2)

TDZ/CL Rwy 13
HIRL Rwy 4-22 and 13-31
REIL Rwy 31

ATLANTIC CITY, NEW JERSEY
Amdt 4C 09SEP21

39°27'N-74°35'W

ATLANTIC CITY INTL (ACY)
RNAV (GPS) RWY 22

NE-2, 19 FEB 2026 to 19 MAR 2026

NE-2, 19 FEB 2026 to 19 MAR 2026