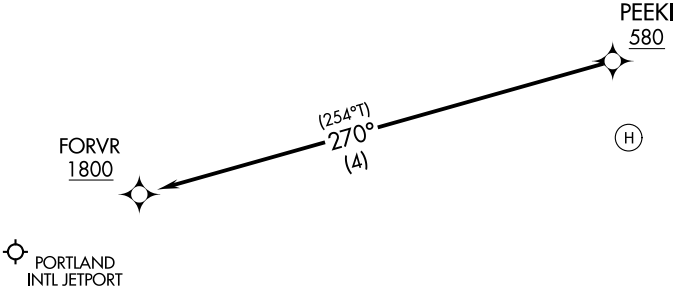


PORTLAND DEP CON ★
119.75 269.35
BOSTON CENTER
128.2 263.05
PWM ASOS
119.05

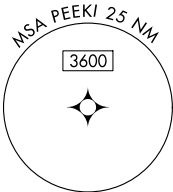
RNP 0.3 - GPS. AP.

TOP ALTITUDE:
ASSIGNED BY ATC

PROTOTYPE-NOT FOR NAVIGATION



- NOTE: Pilot must ensure CDI sensitivity is set to 0.30 NM. CDI may be reset to 1.00 NM after FORVR as applicable.
- NOTE: Use of Peaks Island Ballfield requires permission of the owner. Use of this procedure requires specific authorization by FAA Flight Standards.
- NOTE: Use PWM altimeter setting; when not received, use IWI altimeter setting and cross PEEKI at or above 620.



NOTE: Chart not to scale.

DEPARTURE ROUTE DESCRIPTION

- VFR SEGMENT: VFR climb to PEEKI, cross PEEKI at or above 580 on track 270°.
- IFR SEGMENT: From PEEKI, track 270° to cross FORVR at or above 1800.
- Maintain ATC assigned altitude.