

FEDERAL AVIATION ADMINISTRATION
FLIGHT STANDARDS SERVICE
STANDARD TERMINAL ARRIVAL (STAR)

Bearings, headings, courses, tracks and radials are magnetic. Elevations and altitudes are in feet, MSL. Altitudes are minimum altitudes unless otherwise indicated.
Ceilings are in feet above airport elevation. Distances are in nautical miles. Visibilities are in statute miles or feet RVR unless otherwise indicated.

Arrival Name	Number	STAR Computer Code	Superseded Number	Dated	Effective Date
RYYMN (RNAV)	THREE	RYYMN.RYYMN3	TWO	07/24/24	

TRANSITION ROUTES:

Transition Name	Transition Computer Codes	From FIX/NAVAID	To FIX/NAVAID	Course	Distance	MEA	MOCA	MAA	Crossing Altitudes / Fixes
LOONE	LOONE.RYYMN3	LOONE	LOONE						
			ULTRA	217.14	27.57	12000	2200		AT/BELOW FL230
			RYYMN	184.71	32.28	11000	2200		BETWEEN 15000 AND FL190
NMANN	NMANN.RYYMN3	NMANN	NMANN						
			SOKOL	104.54	50.00	15000	2700		
			RANTS	105.16	31.88	15000	2200		AT/ABOVE FL240
RANTS	RANTS.RYYMN3	RANTS	RANTS	130.83	37.76	11000	2200		BETWEEN 15000 AND FL190
			RYYMN	130.83	37.76	11000	2200		AT/ABOVE FL240
			RYYMN	130.83	37.76	11000	2200		BETWEEN 15000 AND FL190
SOKOL	SOKOL.RYYMN3	SOKOL	SOKOL						
			RANTS	105.16	31.88	15000	2200		AT/ABOVE FL240
			RYYMN	130.83	37.76	11000	2200		BETWEEN 15000 AND FL190
TONES	TONES.RYYMN3	TONES	TONES						
			ULTRA	159.85	41.66	12000	2500		AT/BELOW FL230
			RYYMN	184.71	32.28	11000	2200		BETWEEN 15000 AND FL190
ULTRA	ULTRA.RYYMN3	ULTRA	ULTRA						AT/BELOW FL230
			RYYMN	184.71	32.28	11000	2200		BETWEEN 15000 AND FL190

ARRIVAL ROUTE DESCRIPTION:

FROM RYYMN ON TRACK 156.73/10.00 TO CROSS PEKIE AT OR ABOVE 12000, THEN ON TRACK 156.78/4.00 TO JONIL.

LANDING RWY 2L/C/R: FROM JONIL ON TRACK 156.82/18.44 TO CROSS FFISK AT OR ABOVE 10000 AND AT 250 KIAS, THEN ON TRACK 156.92/6.00 TO CROSS JNKNS AT OR ABOVE 9000 AND AT 230 KIAS, THEN ON TRACK 199.75/6.95 TO CROSS WAMAR AT 8000 AND AT 210 KIAS, THEN ON TRACK 199.75. EXPECT RADAR VECTORS TO FINAL APPROACH COURSE.

LANDING RWY 13: FROM JONIL ON TRACK 151.24/8.34 TO CROSS WILEE AT 9000 AND AT 210 KIAS, THEN ON TRACK 136.28/4.00 TO CROSS DRUMZ AT 9000 AND AT 210 KIAS, THEN ON TRACK 136.28. EXPECT RADAR VECTORS TO FINAL APPROACH COURSE.

LANDING RWY 20L/C/R: FROM JONIL ON TRACK 112.15/10.90 TO CROSS TURNT AT 7000 AND AT 210 KIAS, THEN ON TRACK 110.91. EXPECT RADAR VECTORS TO FINAL APPROACH COURSE.

LANDING RWY 31: FROM JONIL ON TRACK 167.09/24.85 TO CROSS KLOSE AT OR ABOVE 10000 AND AT 250 KIAS, THEN ON TRACK 165.45/6.30 TO CROSS NASHN AT OR ABOVE 9000 AND AT 250 KIAS, THEN ON TRACK 147.49/4.01 TO CROSS FYYRE AT 9000 AND AT 210 KIAS, THEN ON TRACK 136.26. EXPECT RADAR VECTORS TO FINAL APPROACH COURSE.

PBN REQUIREMENT NOTES:

RNAV 1 - DME/DME/IRU OR GPS

EQUIPMENT REQUIREMENT NOTES:

RADAR REQUIRED



FEDERAL AVIATION ADMINISTRATION
FLIGHT STANDARDS SERVICE
STANDARD TERMINAL ARRIVAL (STAR)

Bearings, headings, courses, tracks and radials are magnetic. Elevations and altitudes are in feet, MSL. Altitudes are minimum altitudes unless otherwise indicated.
Ceilings are in feet above airport elevation. Distances are in nautical miles. Visibilities are in statute miles or feet RVR unless otherwise indicated.

Arrival Name	Number	STAR Computer Code	Superseded Number	Dated	Effective Date
RYYMN (RNAV)	THREE	RYYMN.RYYMN3	TWO	07/24/24	

PROCEDURAL DATA NOTES:

NOTE: JET AIRCRAFT ONLY

NOTE: LANDING NORTH USE RWY 2L TRANSITION, LANDING SOUTH USE RWY 20R TRANSITION.

NOTE: EXPECT TO RECEIVE LANDING DIRECTION AND DESCEND VIA CLEARANCE FROM MEMPHIS CENTER. EXPECT RWY ASSIGNMENT FROM NASHVILLE APPROACH.

NOTE: RANTS, ULTRA TRANSITIONS, ATC ASSIGNED ONLY.

FIXES AND/OR HOLDING PATTERNS:

CHART HOLDING AT LOONE: HOLD N, RT, 182.00 INBOUND, 10 NM LEGS.

CHART HOLDING AT NMANN: HOLD W, LT, 104.54 INBOUND, 15 NM LEGS.

CHART HOLDING AT RANTS: HOLD NW, RT, 130.83 INBOUND, 10 NM LEGS.

CHART HOLDING AT RYYMN: HOLD NW, RT, 156.73 INBOUND, 10 NM LEGS.

CHART HOLDING AT ULTRA: HOLD N, RT, 159.85 INBOUND, 10 NM LEGS.

COMMUNICATIONS:

AIRPORTS SERVED:

<u>AIRPORT ID</u>	<u>CITY</u>	<u>STATE</u>
BNA	NASHVILLE	TN

LOST COMMUNICATIONS PREFERENCES:

REMARKS:

ENVIRONMENTAL REVIEW UNDER ORDER 1050.1 (LATEST EDITION) AND THE NOISE SCREENING HAVE BEEN ACCOMPLISHED.

ADDITIONAL FLIGHT DATA:

DME/DME ASSESSMENT: SAT (RNP 2.0)

MAG VAR: BNA 03W/2010

CHART AT FYYRE TERMINUS: BNA LDG RWY 31

CHART AT WAMAR TERMINUS: BNA LDG RWY 2L/C/R

CHART AT TURNT TERMINUS: BNA LDG RWY 20L/C/R

CHART AT DRUMZ TERMINUS: BNA LDG RWY 13



FEDERAL AVIATION ADMINISTRATION
FLIGHT STANDARDS SERVICE
STANDARD TERMINAL ARRIVAL (STAR)

Bearings, headings, courses, tracks and radials are magnetic. Elevations and altitudes are in feet, MSL. Altitudes are minimum altitudes unless otherwise indicated.
Ceilings are in feet above airport elevation. Distances are in nautical miles. Visibilities are in statute miles or feet RVR unless otherwise indicated.

Arrival Name	Number	STAR Computer Code	Superseded Number	Dated	Effective Date
RYYMN (RNAV)	THREE	RYYMN.RYYMN3	TWO	07/24/24	

FLIGHT INSPECTED BY:

ORGANIZATION: **DATE:**

Flight Inspected Signature: _____

DEVELOPED BY:

JOEY TINSLEY, ESC OSG PBN CO-LEAD

NATCA

09/27/24

Developed By Signature: _____

APPROVED BY:

BEV BORDY

AJV-A420

Approved By Signature: _____

CHANGES:

1. REMOVED YACKS TRANSITION.
2. REMOVED GUMMA AND LULUO TRANSITIONS AND ASSOCIATED NOTES.
3. ADDED LOONE, NMANN, SOKOL, TONES, AND ULTRA TRANSITIONS.
4. ESTABLISHED HOLDING AT NMANN: HOLD W, LT, 104.54 INBOUND, 15 NM LEGS.
5. RANTS TRANSITION: COURSE/ DISTANCE FROM RANTS TO RYYMN CHANGED FROM 125.85/45.03 TO 130.83/37.76.
6. ESTABLISHED HOLDING AT RANTS: HOLD NW, RT, 130.83 INBOUND, 10 NM LEGS.
7. AMENDED ALTITUDE RESTRICTION AT RYYMN FROM 11000-FL190 TO 15000-FL190.
8. ESTABLISHED NEW HOLDING AT ULTRA: HOLD N, RT, 159.85 INBOUND, 10 NM LEGS.
9. ESTABLISHED HOLDING AT LOONE: HOLD N, RT, 182.00 INBOUND, 10 NM LEGS.
10. AMENDED ALTITUDE RESTRICTION AT PEKIE FROM AT/ABOVE 10000 TO AT/ABOVE 12000.
11. COMMON ROUTE: REMOVED AT 9000 ALTITUDE RESTRICTION AT JONIL.
12. REMOVED COMMON POINT OBATE FROM COMMON ROUTE AND ALL RUNWAY TRANSITIONS.
13. LANDING RWY 20L/C/R: ADDED TERMINUS WP TURNT AFTER JONIL WITH AT 7000 AND AT 210 KIAS RESTRICTIONS; REMOVED YYALL AND CULAR.
14. LANDING RWY 2L/C/R: ADDED NEW WAYPOINT FFISK (AT/ABOVE 10000 AND AT 250 KIAS); CHANGED ALTITUDE RESTRICTION AT JNKNS FROM AT/ABOVE 6000 TO AT/ABOVE 9000 AND AT 230 KIAS, AND CHANGED WAMAR FROM AT 5000 TO AT 8000.
15. LANDING RWY 13: ADDED NEW WAYPOINTS WILEE (AT 9000 AND AT 210 KIAS) AND DUMZ (AT 9000 AND AT 210 KIAS); REMOVED TCKKS.
16. LANDING RWY 31: ADDED NEW WAYPOINTS KLOSE (AT/ABOVE 10000 AND AT 250 KIAS), NASHN (AT/ABOVE 9000 AND AT 250 KIAS), AND FYYRE (AT 9000 AND AT 210 KIAS); REMOVED PEUWW, CHEZY, KIIWI, AND GILME.
17. CHANGED TURBOJET NOTE TO REFLECT JET
18. CONSOLIDATED CHART NOTES "EXPECT TO RECEIVE LANDING DIRECTION (NORTH/SOUTH/NORTHWEST) AND DESCEND VIA CLEARANCE FROM MEMPHIS CENTER; NASHVILLE APPROACH WILL ISSUE LANDING RUNWAY" TO READ "NOTE: EXPECT TO RECEIVE LANDING DIRECTION AND DESCEND VIA CLEARANCE FROM MEMPHIS CENTER. EXPECT RWY ASSIGNMENT FROM NASHVILLE APPROACH."
19. CONSOLIDATED CHART NOTES "LANDING SOUTH INDICATES RWY 20L/20C/20R. LANDING NORTH INDICATES RWY 2L/2C/2R. LANDING NORTHWEST INDICATES RWY 31." TO READ "NOTE: LANDING NORTH USE RWY 02L TRANSITION, LANDING SOUTH USE RWY 20R TRANSITION."
20. ADDED PROCEDURAL DATA NOTE: RANTS, SOKOL, ULTRA TRANSITIONS, ATC ASSIGNED ONLY.
21. ADDED MOCA VALUES TO ALL TRANSITION ROUTES.
22. REMOVED NOTES RNAV-1 AND DME/DME/IRU OR GPS REQUIRED FROM PROCEDURAL DATA NOTES AND ADDED NOTE RNAV 1 - DME/DME/IRU OR GPS TO PBN REQUIREMENT NOTES.
23. MOVED RADAR REQUIRED FROM PROCEDURAL DATA NOTES TO EQUIPMENT REQUIREMENT NOTES.
24. ADDED TERMINUS INFORMATION TO ADDITIONAL FLIGHT DATA FOR RWYS 20L/C/R, 13, 31, 2L/C/R.



FEDERAL AVIATION ADMINISTRATION
FLIGHT STANDARDS SERVICE
STANDARD TERMINAL ARRIVAL (STAR)

Bearings, headings, courses, tracks and radials are magnetic. Elevations and altitudes are in feet, MSL. Altitudes are minimum altitudes unless otherwise indicated.
Ceilings are in feet above airport elevation. Distances are in nautical miles. Visibilities are in statute miles or feet RVR unless otherwise indicated.

Arrival Name	Number	STAR Computer Code	Superseded Number	Dated	Effective Date
RYYMN (RNAV)	THREE	RYYMN.RYYMN3	TWO	07/24/24	

- 25. REMOVED AIRPORT NAME FROM AIRPORTS SERVED AND ADDED AIRPORT ID; REMOVED K IDENT FROM 17.1 FORM.
- 26. RECOMMENDED NAVAID AND HOLDING INFORMATION REMOVED FROM 8260-17.2.
- 27. REMOVED NASHVILLE WEST APPROACH CONTROL (119.35/372.0) AND NASHVILLE INTL ATIS FROM COMMUNICATIONS.
- 28. REMOVED CHART NOTE AT CULAR: LANDING RWY 20L/20C/20R: AFTER CULAR, TRACK 110, EXPECT RADAR VECTORS TO FINAL APPROACH COURSE.
- 29. REMOVED CHART NOTE AT TCKKS: LANDING RWY 13: AFTER TCKKS, TRACK 200, EXPECT RADAR VECTORS TO FINAL APPROACH COURSE.

REASONS:

- 1-16. ATC REQUEST.
- 17. DOCUMENTED IAW 8260.19J 4-5-12d(3)(a).
- 18-19. REDUCED CHART CLUTTER.
- 20. ATC REQUEST DOCUMENTED IAW 8260.19J 4-5-12d(3)(b).
- 21. MOCA VALUES ADDED IAW 8260.19J 4-5-12b(8).
- 22. PBN REQUIREMENTS DOCUMENTED IAW 8260.19J PARA 4-5-3d(1).
- 23. RADAR REQUIRED DOCUMENTED IAW 8260.19J PARA 4-5-12d(2)(b).
- 24. TERMINUS INFORMATION DOCUMENTED IAW 8260.19J 4-5-2h(2).
- 25. IAW CURRENT DOCUMENTATION STANDARDS.
- 26. NO LONGER REQUIRED.
- 27. APPROACH CONTROL AND ATIS AUTOMATICALLY CHARTED AND DO NOT NEED TO BE DOCUMENTED IN THIS SECTION IAW 8260.19J 4-5-12f.
- 28-29. ATC REQUEST - NOTES NO LONGER APPLY.

06/18/2025: THIS IS AN UPDATED COPY OF THE FORM DEVELOPED ON 09/27/24.

- 1. CHANGED NOTE FROM EXPECT TO RECEIVE LANDING DIRECTION AND DESCEND VIA CLEARENCE FROM MEMPHIS CENTER. EXPECT RWY ASSIGNMENT FROM NASHVILLE APPROACH PRIOR TO CHSNE TO EXPECT TO RECEIVE LANDING DIRECTION AND DESCEND VIA CLEARENCE FROM MEMPHIS CENTER. EXPECT RWY ASSIGNMENT FROM NASHVILLE APPROACH.

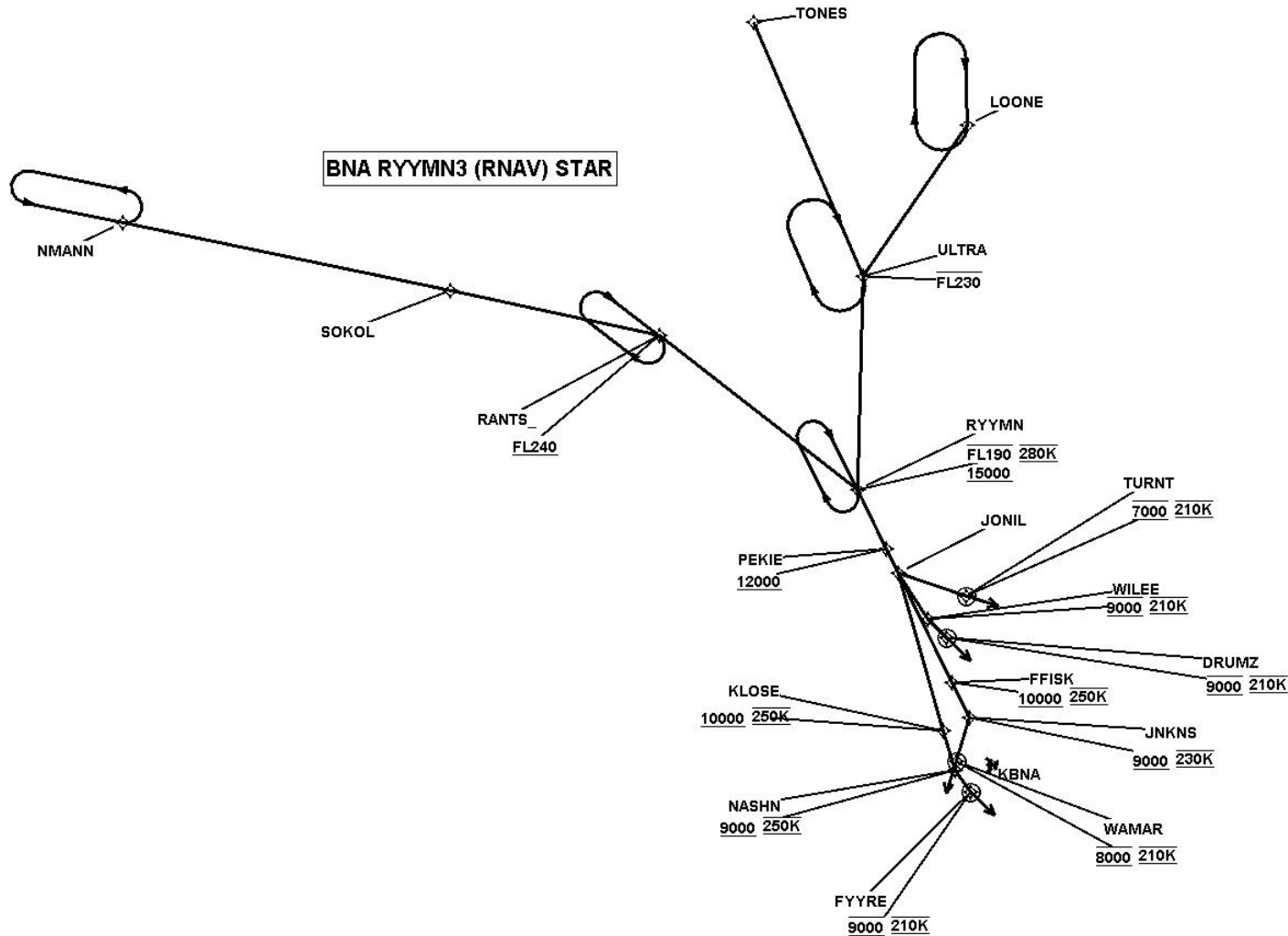
07/09/2025: THIS IS AN UPDATED COPY OF THE FORM DEVELOPED ON 09/27/24.

- 1. REMOVED SOKOL FROM ATC ASSIGNED ONLY NOTE.

FEDERAL AVIATION ADMINISTRATION
FLIGHT STANDARDS SERVICE
STANDARD TERMINAL ARRIVAL (STAR)

Bearings, headings, courses, tracks and radials are magnetic. Elevations and altitudes are in feet, MSL. Altitudes are minimum altitudes unless otherwise indicated.
Ceilings are in feet above airport elevation. Distances are in nautical miles. Visibilities are in statute miles or feet RVR unless otherwise indicated.

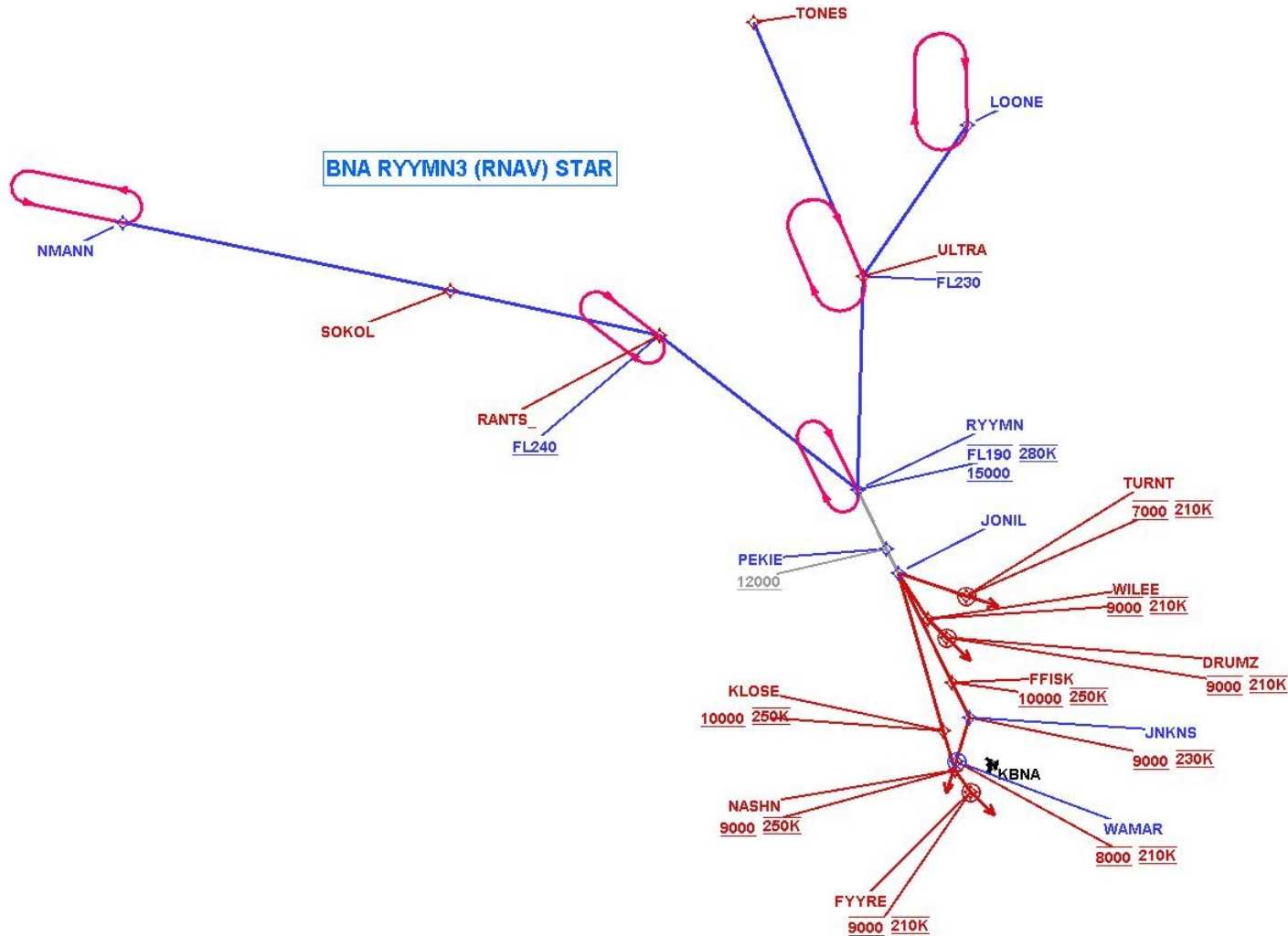
Arrival Name	Number	STAR Computer Code	Superseded Number	Dated	Effective Date
RYYMN (RNAV)	THREE	RYYMN.RYYMN3	TWO	07/24/24	
Graphic Depiction 1					



FEDERAL AVIATION ADMINISTRATION
FLIGHT STANDARDS SERVICE
STANDARD TERMINAL ARRIVAL (STAR)

Bearings, headings, courses, tracks and radials are magnetic. Elevations and altitudes are in feet, MSL. Altitudes are minimum altitudes unless otherwise indicated.
Ceilings are in feet above airport elevation. Distances are in nautical miles. Visibilities are in statute miles or feet RVR unless otherwise indicated.

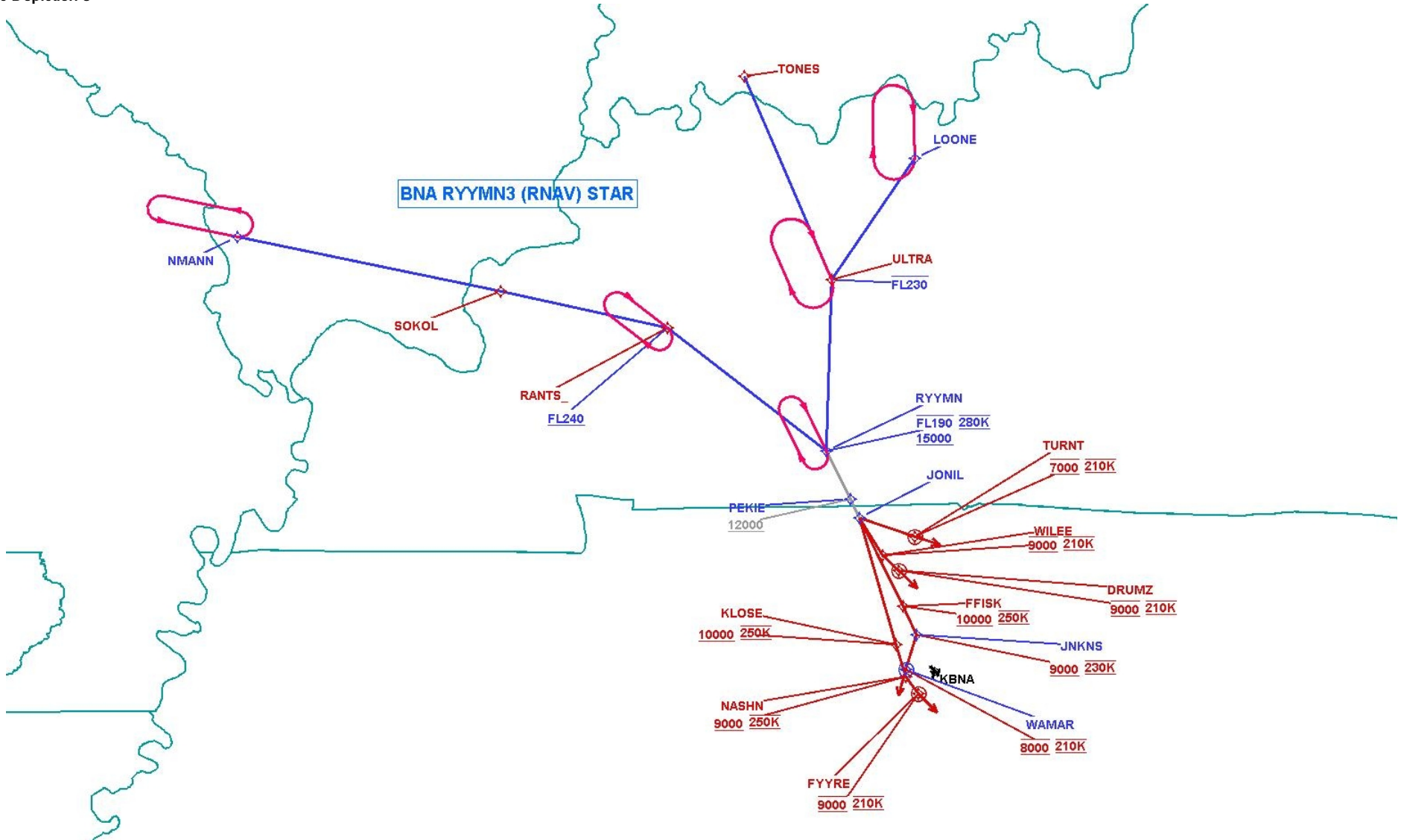
Arrival Name	Number	STAR Computer Code	Superseded Number	Dated	Effective Date
RYYMN (RNAV)	THREE	RYYMN.RYYMN3	TWO	07/24/24	
Graphic Depiction 2					



FEDERAL AVIATION ADMINISTRATION
FLIGHT STANDARDS SERVICE
STANDARD TERMINAL ARRIVAL (STAR)

Bearings, headings, courses, tracks and radials are magnetic. Elevations and altitudes are in feet, MSL. Altitudes are minimum altitudes unless otherwise indicated.
Ceilings are in feet above airport elevation. Distances are in nautical miles. Visibilities are in statute miles or feet RVR unless otherwise indicated.

Arrival Name	Number	STAR Computer Code	Superseded Number	Dated	Effective Date
RYYMN (RNAV)	THREE	RYYMN.RYYMN3	TWO	07/24/24	
Graphic Depiction 3					



**FEDERAL AVIATION ADMINISTRATION
FLIGHT STANDARDS SERVICE
STAR (DATA RECORD)**

Arrival Name RYYMN (RNAV)	Number THREE		STAR Computer Code RYYMN.RYYMN3		Superseded Number TWO		Dated 07/24/24		Effective Date
<u>FIX/NAVAID</u>	<u>LAT/LONG</u>	<u>C</u>	<u>FO/FB</u>	<u>LEG TYPE</u>	<u>TC</u>	<u>DIST (NM)</u>	<u>ALTITUDE</u>	<u>SPEED</u>	<u>REMARKS</u>
En Route Transition									
LOONE	374414.43N / 0864518.02W	Y		IF					LOONE.RYYMN3
ULTRA	372122.31N / 0870442.33W	Y	FB	TF	214.14	27.57	AT/BELOW FL230		
RYYMN	364904.12N / 0870554.29W	Y	FB	TF	181.71	32.28	15000BFL190	AT 280K	
En Route Transition									
NMANN	372928.40N / 0892328.88W	Y		IF					NMANN.RYYMN3
SOKOL	371911.45N / 0882203.92W	Y	FB	TF	101.54	50.00			
RANTS	371221.46N / 0874303.13W	Y	FB	TF	102.16	31.88	AT/ABOVE FL240		
RYYMN	364904.12N / 0870554.29W	Y	FB	TF	127.83	37.76	15000BFL190	AT 280K	
En Route Transition									
RANTS	371221.46N / 0874303.13W	Y		IF			AT/ABOVE FL240		RANTS.RYYMN3
RYYMN	364904.12N / 0870554.29W	Y	FB	TF	127.83	37.76	15000BFL190	AT 280K	
En Route Transition									
SOKOL	371911.45N / 0882203.92W	Y		IF					SOKOL.RYYMN3
RANTS	371221.46N / 0874303.13W	Y	FB	TF	102.16	31.88	AT/ABOVE FL240		
RYYMN	364904.12N / 0870554.29W	Y	FB	TF	127.83	37.76	15000BFL190	AT 280K	
En Route Transition									
TONES	375945.06N / 0872514.62W	Y		IF					TONES.RYYMN3
ULTRA	372122.31N / 0870442.33W	Y	FB	TF	156.85	41.66	AT/BELOW FL230		
RYYMN	364904.12N / 0870554.29W	Y	FB	TF	181.71	32.28	15000BFL190	AT 280K	
En Route Transition									
ULTRA	372122.31N / 0870442.33W	Y		IF			AT/BELOW FL230		ULTRA.RYYMN3
RYYMN	364904.12N / 0870554.29W	Y	FB	TF	181.71	32.28	15000BFL190	AT 280K	



**FEDERAL AVIATION ADMINISTRATION
FLIGHT STANDARDS SERVICE
STAR (DATA RECORD)**

Arrival Name RYYMN (RNAV)		Number THREE		STAR Computer Code RYYMN.RYYMN3		Superseded Number TWO		Dated 07/24/24	Effective Date
FIX/NAVAID	LAT/LONG	C	FO/FB	LEG TYPE	TC	DIST (NM)	ALTITUDE	SPEED	REMARKS
Common Route									
RYYMN	364904.12N / 0870554.29W	Y		IF			15000BFL190	AT 280K	RYYMN.RYYMN3
PEKIE	364005.25N / 0870024.19W	Y	FB	TF	153.73	10.00	AT/ABOVE 12000		
JONIL	363629.63N / 0865812.51W	Y	FB	TF	153.78	04.00			
Runway Transition									
JONIL	363629.63N / 0865812.51W	Y		IF					
FFISK	361954.98N / 0864808.47W	Y	FB	TF	153.82	18.44	AT/ABOVE 10000	AT 250K	
JNKNS	361431.13N / 0864452.84W	Y	FB	TF	153.92	06.00	AT/ABOVE 9000	AT 230K	
WAMAR	360751.12N / 0864721.23W	Y	FO	TF	196.75	06.95	AT 8000	AT 210K	
KBNA:RWY 2C,RWY 2L,RWY 2R				FM	196.75				
Runway Transition									
JONIL	363629.63N / 0865812.51W	Y		IF					
WILEE	362923.62N / 0865246.01W	Y	FB	TF	148.24	08.34	AT 9000	AT 210K	
DRUMZ	362638.80N / 0864909.46W	Y	FO	TF	133.28	04.00	AT 9000	AT 210K	
KBNA:RWY 13				FM	133.28				
Runway Transition									
JONIL	363629.63N / 0865812.51W	Y		IF					
TURNT	363254.12N / 0864525.76W	Y	FO	TF	109.15	10.90	AT 7000	AT 210K	
KBNA:RWY 20C,RWY 20L,RWY 20R				FM	107.91				
Runway Transition									
JONIL	363629.63N / 0865812.51W	Y		IF					
KLOSE	361233.28N / 0864947.32W	Y	FB	TF	164.09	24.85	AT/ABOVE 10000	AT 250K	
NASHN	360632.34N / 0864726.63W	Y	FB	TF	162.45	06.30	AT/ABOVE 9000	AT 250K	
FYYRE	360316.13N / 0864434.22W	Y	FO	TF	144.49	04.01	AT 9000	AT 210K	
KBNA:RWY 31				FM	133.26				

QUALITY

16

QUALITY
16
CHECKED