

---

4-20-23 Team 2b

**LA LS52 COPTER (GPS) 326 ORIG**

11-17-22 PRB RESULTS: Returned-PRB

V1 IS BEING RETURNED PRE-PRB FOR THE FOLLOWING:

- 1) CATEX – DOES NOT ADDRESS THIS PROCEDURE. REQUESTED FROM CENTRAL
- 2) NEED WAIVER CANCELLATION. ADD AND SIGN
- 3) 8260-7A REMOVE AIS MANAGER NAME AND OFFICE NUMBER IN THE APPROVED BY SECTION AS THIS IS FOR AFS SIGNATURE. PLEASE REMOVE

ADDITIONALLY PER COORDINATION WITH AFS, PLEASE ADD IN REMARKS SECTION OF -7 CANCELLATION


THIS CANCELS PINS PROCEDURE VENICE, LA, VARIOUS HELIPORTS, FACILITY IDENTIFIER: GPS, COPTER GPS 326, ORIGINAL AND TO THE HELIPORTS SERVED, PHI VENICE HELIPORT (7R1), CHEVRON USA INC. SEAPLANE BASE (8LA1), AIR LOGISTICS (VENICE) N HELIPORT (45LA) ERA HELICOPTER VENICE BASE HELIPORT (LS52) AND EVERGREEN HELICOPTERS INTERNATIONAL, INC. (OLS3). CONCURRENT WITH PINS PROCEDURE LS52 COPTER RNAV (GPS) 331

Flight Procedures Cover Page	Task Action: Cancellation	Task Type: IAP	Estimated Chart Date: 04/20/2023	APWS Task ID: B92E2CB53AB44AADA4F3F45F8051A98D	APWS Project ID: F4CE0AA14F7E4B77AD31A8C5D2A7E702
Procedure: COPTER GPS 326 ORIG		Enroute: NO	Specialist: Dean, Kelly		Agreement Number:
Airport ID: LS52			Airport City: VENICE		State: LA
Facility ID:	Facility Type:	Flight Inspection Remark Type:			

**Procedure Comments:**  
 PROCEDURE CANCELED.  
 REPLACED BY COPTER RNAV (GPS) 331, ORIG.  
 8260-1 CANCELED: REDUCE VISIBILITY FROM 3/4 SM TO 1/2 SM.  
 REPLACED BY NEW 8260-1 WAIVER REQUEST FOR COPTER RNAV (GPS) 331, ORIG.

11/29/22: THIS IS AN UPDATED COPY OF THE FORM DEVELOPED ON 10/16/20.  
 1. ADDED EXPLANATION FOR AFS IN CHANGES-REASONS.  
 2. REMOVED APPROVED BY NAME.  
 3. ADDED '8260-1 CANCELED: REDUCE VISIBILITY FROM 3/4 SM TO 1/2 SM. REPLACED BY NEW 8260-1 WAIVER REQUEST FOR COPTER RNAV (GPS) 151, ORIG' TO PROCEDURE COMMENTS ON FLIGHT PROCEDURE COVER PAGE.

CONTACT ERIK SUSKI (405) 954-7331.

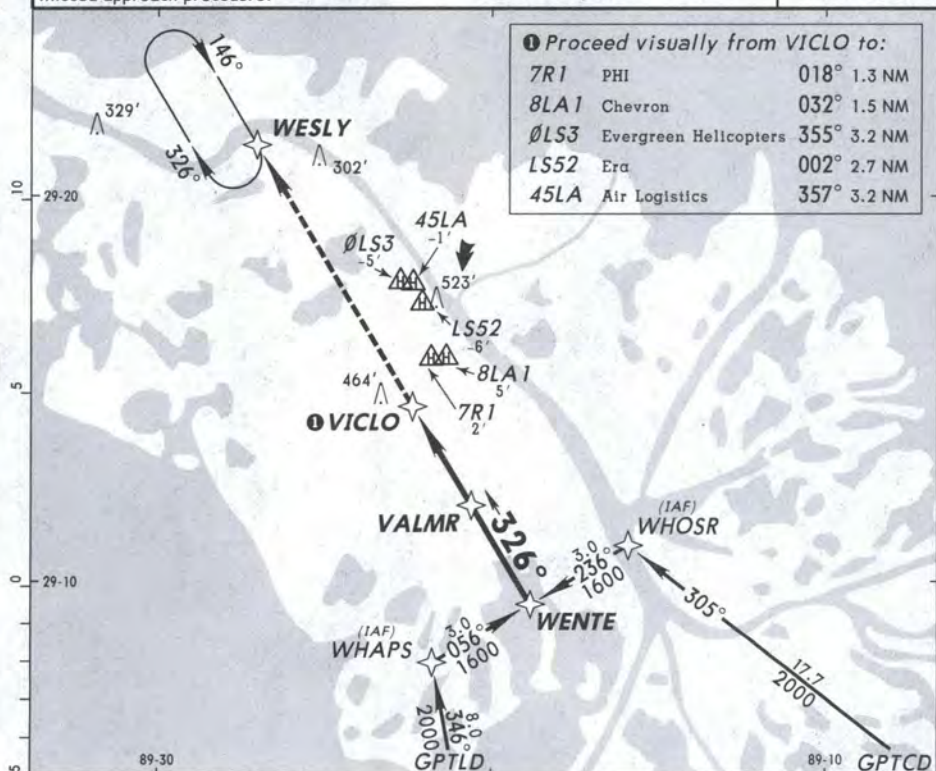


# VENI AREA HELIPORTS

Petroleum Helicopters, Inc.  
2 OCT 98 18-8

VENICE, LA  
COPTER GPS-326°

HOUSTON Center 134.9			PHI Advisory Service CTAF 123.0		
GPS	Final Apch Crs <b>326°</b>	Minimum Alt <b>VALMR</b> <b>1000'</b> (996')	MDA(H) (CONDITIONAL) <b>300'</b> (296')	See Planview for Area Helipad Elevations	<div>1600'</div> <div>MSA VICLO</div>
<b>MISSED APCH: Climb to 1600' via 326° course to WESLY and hold.</b> 1. Special authorization required. 2. Obtain altimeter setting on PHI Advisory Service (123.0); if not received, use New Orleans (Moisant Field) altimeter setting. 3. Arm approach mode 30 NM prior to VICLO. 4. Limit final and missed approach maximum airspeed to 70 KIAS. 5. Proceed VFR from MAP to landing area, or conduct missed approach procedure.					



1 in=5 NM

See Planview  
for Area Helipad  
Elevations

VISUAL  
TO HELIPORT

VICLO

M

3.0

VALMR

1000'  
(996')

3.0

WENTE

326°

1600'  
(1596')


CHANGES: New procedure.

© JEPPESEN SANDERSON, INC., 1998. ALL RIGHTS RESERVED.

# FLIGHT PROCEDURES STANDARDS

DATE:

JUL 17 1998

1. Flight Procedure Identification:

VENICE, LA Specified Heliports, Special Copter GPS 326

2. Waiver Required and Applicable Standard:

Waiver of 3/4-mile visibility approach minimum for point in space approach stated in 8260.42A para. 16a(2) and TERPS Chapter 11 paragraph 1127c.

3. Reason for Waiver (*Justification for nonstandard treatment*):

Waiver required to allow 1/2-mile visibility for point in space approach during the day.

TITLE 14 CFR Part 135.205 authorizes VFR helicopter operations with 1/2 mile visibility during the day and 1 mile visibility at night.

4. Equivalent Level of Safety Provided:

This special procedure will be authorized by Operation Specifications for Title 14, CFR Part 135 operators and by Letter of Authorization for Title 14, CFR Part 91 operators.

Each operator shall provide training to each pilot in procedures for transitioning from instrument approach flight speeds to visual flight speeds that will allow the pilot to see and avoid geographic features and obstructions from the missed approach point to the landing site. Pilot training shall provide familiarization with the surrounding geographic features and obstructions in the approach and landing areas.

On FAA Form 8260-7, Additional Flight Data Section, insert the following:

Chart: All obstacles within ten (10) nautical miles of the missed approach point higher than the minimum descent altitude.

On FAA Form 8260-7, Notes, insert the following:

Special Authorization Required.

5. How Relocation or Additional Facilities Will Affect Waiver Requirement:

Relocation or additional facilities will not affect this waiver.

6. Coordination With User Organizations (*Specify*): ZHU ARTCC, AVN 130, AVN 160, ASW-250, FTW FPO, AIR LOGISTICS, CHEVRON, ERA, EVERGREEN, MOBIL, Noble Drilling Services, Inc. and PHI HELICOPTER ORGANIZATIONS.

7. SUBMITTED BY

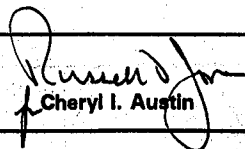
Office Identification:

AVN-100

Title:

Manager

Signature:

  
Cheryl I. Austin

8. REGIONAL ENDORSEMENT	Approval Recommended
	Not Recommended
	Not Required

Comments:

Date:	Routing Symbol:	Signature:
-------	-----------------	------------

9. AVN ENDORSEMENT	Approval Recommended
	Not Recommended
	Not Required

Comments:

Date:	Routing Symbol:	Signature:
-------	-----------------	------------

10. AFS ACTION	<input checked="" type="checkbox"/> Approved
	<input type="checkbox"/> Disapproved
	<input type="checkbox"/> Not Required

Comments: Approved based on the equivalent level of safety provided in block 4.  
This waiver is canceled effective April 20, 2023.  
Associated special procedure COPTER GPS 326, ORIG will also be canceled on the effective date.  
(Signature) \_\_\_\_\_  
(Title, Office Symbol) \_\_\_\_\_

Date: 8/4/98	Routing Symbol: AFS-400	Signature: Robert A. Wright, Manager Flight Technologies and Procedures Division
-----------------	----------------------------	--



ORIGINAL

## COPTER GPS 326

VENICE, LA

OLD

## BRACKET POINTS

RIGHT MAP WP = 291500.90/892208.97  
 LEFT MAP WP = 291436.12/892256.00  
 RIGHT FAF WP = 291230.85/892014.22  
 LEFT FAF WP = 291156.78/892118.87

GPTLD 290000.00/892000.00  
 GPTCD 290000.00/890000.00  
 WHAPS 290750.74/892146.35  
 WHOSR 291056.46/891553.80  
 WENTE 290923.63/891850.12  
 VALMR 291158.35/892035.96  
 VICLO 291433.04/892221.89  
 WESLY 292120.48/892701.15

PROCEED VFR FROM MAP TO  
 LANDING AREA OR CONDUCT  
 SPECIFIED MISSED APPROACH  
 PROCEDURE

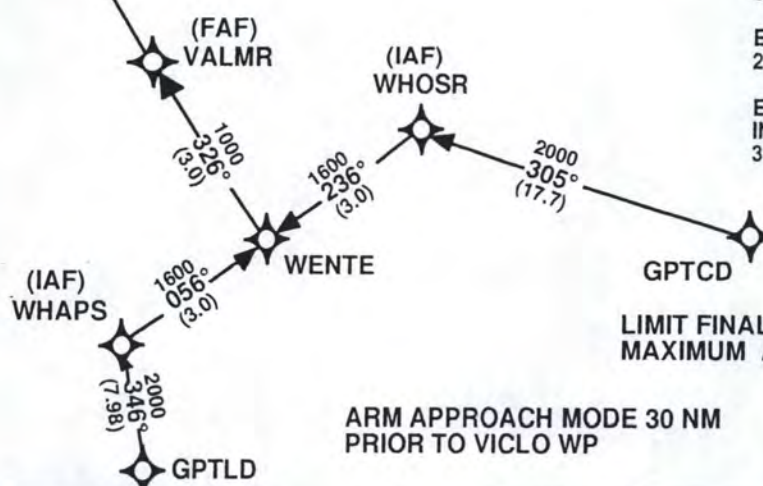
PHI HELIPORT (7R1)  
 1.3 NM ON COURSE 018° FROM MAP

CHEVRON SPB (8LA1)  
 1.5 NM ON COURSE 032° FROM MAP

AIR LOGISTICS HELIPORT (45LA)  
 3.2 NM ON COURSE 367° FROM MAP

ERA HELIPORT (LS52)  
 2.7 NM ON COURSE 002° FROM MAP

EVERGREEN HELICOPTERS  
 INTERNATIONAL, INC. (0LS3)  
 3.2 NM ON COURSE 175° FROM MAP

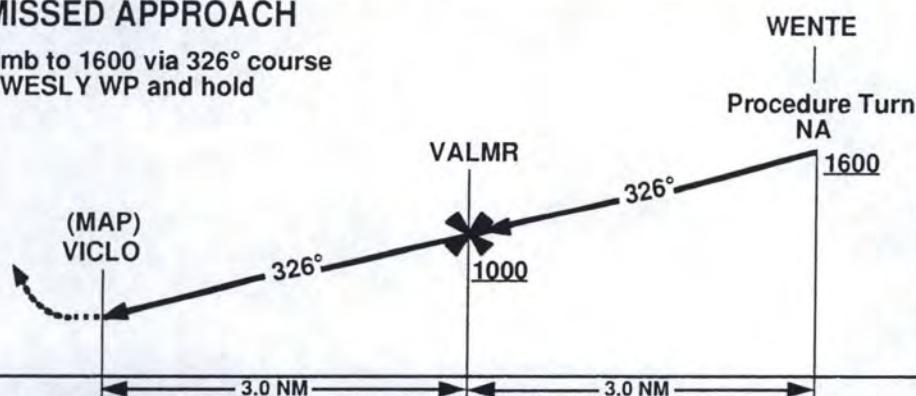


LIMIT FINAL AND MISSED APPROACH  
 MAXIMUM AIR SPEED TO 70 KIAS

ARM APPROACH MODE 30 NM  
 PRIOR TO VICLO WP

## MISSED APPROACH

Climb to 1600 via 326° course  
 to WESLY WP and hold



National  
 Flight Procedures  
 Office

AVN-130  
 (405)954-6658

FOR FLIGHT INSPECTION  
 PURPOSES ONLY,  
 ALWAYS REFER TO THE  
 8260 FORM FOR OFFICIAL  
 INFORMATION

CATEGORY	COPTER	B	C	D	E
H-326	300 - 1/2* 296 (300 - 1/2*)		NA		
NEW ORLEANS (MOISANT FIELD) ALTIMETER SETTING MINIMUMS					
H-326	460 - 1/2* 456 (500 - 1/2*)		NA		

Obtain altimeter setting on PHI Advisory Service (122.85);  
 if not received, use New Orleans (Moisant Field) altimeter setting.

\* Night visibility minimum 1 mile.

Special authorization required.

**A NA**

COPTER GPS 326

ORIGINAL

VENICE, LA