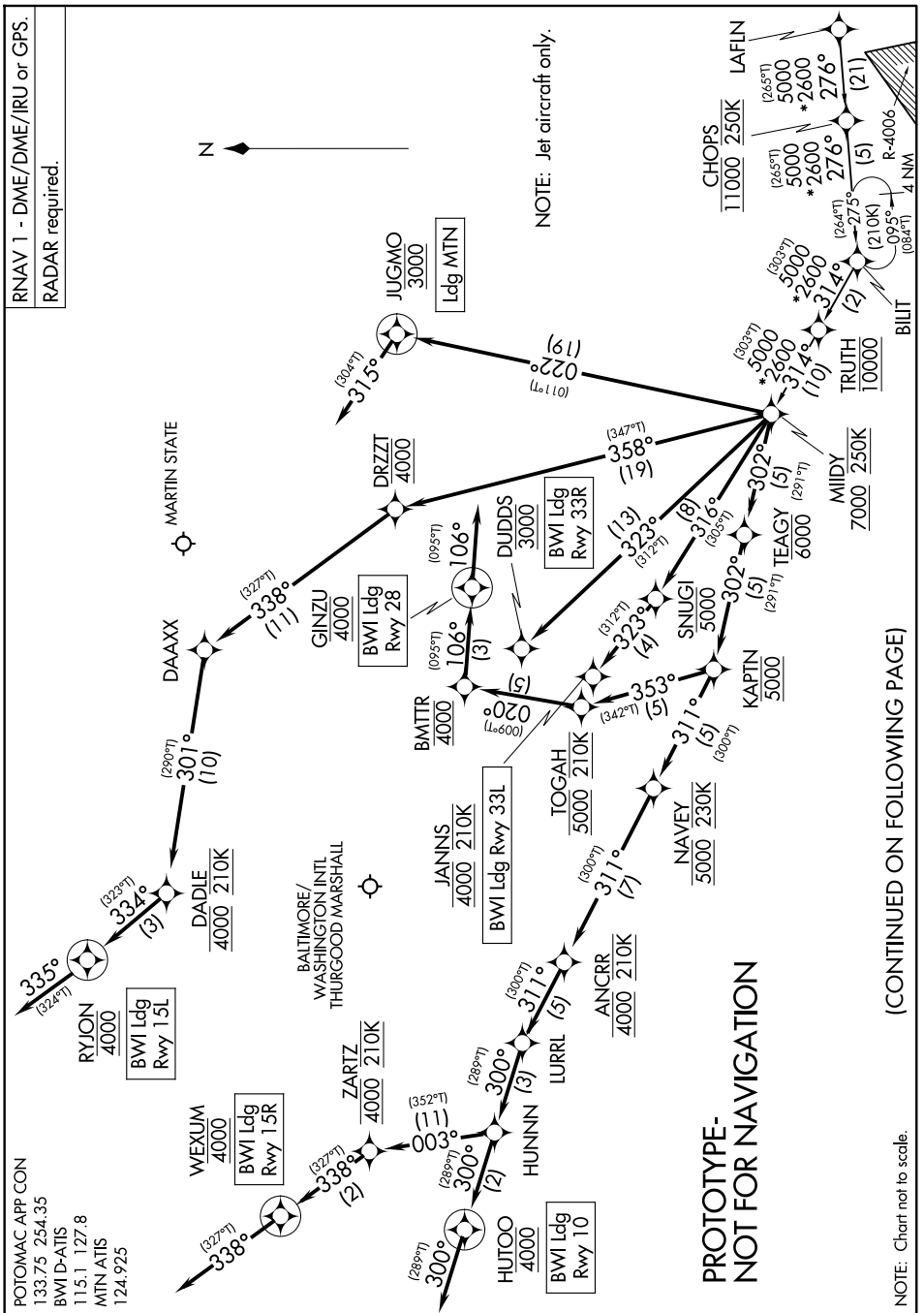


# MIIDY FOUR ARRIVAL (RNAV)

BALTIMORE, MARYLAND



# MIIDY FOUR ARRIVAL (RNAV)

BALTIMORE, MARYLAND

## ARRIVAL ROUTE DESCRIPTION

LAFLN TRANSITION (LAFLN.MIIDY4)

LANDING BWI RUNWAY 10: From MIIDY on track 302° to cross TEAGY at or below 6000, then on track 302° to cross KAPTN at 5000, then on track 311° to cross NAVAY at 5000 and at 230K, then on track 311° to cross ANCRR at 4000 and at 210K, then on track 311° to LURRL, then on track 300° to HUNNN, then on track 300° to cross HUTOO at 4000, then on track 300°. Expect RADAR vectors to final approach course.

LANDING BWI RUNWAY 15L: From MIIDY on track 358° to cross DRZZT at 4000, then on track 338° to DAAXX, then on track 301° to cross DADLE at 4000 and at 210K, then on track 334° to cross RYJON at 4000, then on track 335°. Expect RADAR vectors to final approach course.

LANDING BWI RUNWAY 15R: From MIIDY on track 302° to cross TEAGY at or below 6000, then on track 302° to cross KAPTN at 5000, then on track 311° to cross NAVAY at 5000 and at 230K, then on track 311° to cross ANCRR at 4000 and at 210K, then on track 311° to LURRL, then on track 300° to HUNNN, then on track 003° to cross ZARTZ at 4000 and at 210K, then on track 338° to cross WEXUM at 4000, then on track 338°. Expect RADAR vectors to final approach course.

LANDING BWI RUNWAY 28: From MIIDY on track 302° to cross TEAGY at or below 6000, then on track 302° to cross KAPTN at 5000, then on track 353° to cross TOGAH at 5000 and at 210K, then on track 020° to cross BMTTR at 4000, then on track 106° to cross GINZU at 4000, then on track 106°. Expect RADAR vectors to final approach course.

LANDING BWI RUNWAY 33L: From MIIDY on track 316° to cross SNUGI at or below 5000, then on track 323° to cross JANNS at 4000 and at 210K.  
Expect ILS or LOC Rwy 33L approach.

LANDING BWI RUNWAY 33R: From MIIDY on track 323° to cross DUDDS at 3000.  
Expect ILS or LOC Rwy 33R approach.

LANDING MTN: From MIIDY on track 022° to cross JUGMO at 3000, then on heading 315°. Expect RADAR vectors to final approach course.

PROTOTYPE-NOT FOR NAVIGATION