

## DME DME Assessment Results for MIIDY4 path HUNNN\_HUTOO

### Results Summary

Flyability:	Completed
DME/DME:	Completed - No Critical DMEs
Name:	David C-CTR Cook
Project File:	C:\Users\David C-CTR Cook\Documents\TARGETS WORK\DME-DME WORK\5-14-2026 PUBLICATION\KBWI MIDDY4 STAR\KBWI MIIDY4 (RNAV) STAR DME-DME_20251016.tgs
Output File:	C:\Users\David C-CTR Cook\Documents\TARGETS WORK\DME-DME WORK\5-14-2026 PUBLICATION\KBWI MIDDY4 STAR\KBWI [IFPA] MIIDY4 20251210_1629 EST\HUNNN_HUTOO\KBWI MIIDY4 RNAV STAR HUNNN HUTOO 20251210_1629 EST.pdf
Procedure Name:	MIIDY4
Software: DmeDmePlugin:	7.6.0
Date/Time:	12/10/2025 16:29 EST
Databases:	MITRE 3DEP 3 arcsec

### Failures

No Failures

### Warnings

No Warnings

### Informational

No Informational

### Notes For Flight Check

None

### Flight Plan

Name	Type	Lat/Lon	Altitude (ft)	VNAV Mode	Ground Speed (kts)	Turn Type	Leg Type
HUNNN	WP	N39° 05' 23.1000", W076° 52' 54.3500"	1300	VNAV	200	FLY_BY	TF
HUTOO	WP	N39° 06' 02.0200", W076° 55' 20.1700"	1300	VNAV	200	FLY_OVER	TF

### Flyability

Flight Type:	RNAV_STAR
Selected Airport:	KBWI [IFPA]
Climb Gradient:	None assigned
Speeds:	200 Ground Speed to 11000 FT
	240 Ground Speed to 18000 FT
	260 Ground Speed to 24000 FT
	340 Ground Speed above 24000 FT
Descent During a Turn:	Allowed
VNAV Mode:	Flight Plan

## DME DME Assessment Results for MIIDY4 path HUNNN\_HUTOO

DME/DME	
RNP:	RNP 2
Flight Mode:	Manual
Line of Sight (DTED Level 0 Max):	Evaluated
Inertial Drift:	Enabled
Initial Drift:	0.558 NM
INS Drift Rate:	8.0 NM/Hour
Range Mode:	OSV
RNP Edges:	Evaluated
Min DME Range:	3.0 NM
DME Types:	DME, VOR-DME, VORTAC, TACAN
DME Include Angles:	30 to 150
Critical DMEs:	Allowed
DoD Facilities:	Not included
Foreign Facilities:	Not included
High DMEs:	Included
Low DMEs:	Included
Terminal DMEs:	Included
Flight Check DMEs:	Not selected
Higher Altitudes:	Not Evaluated
Near Maximum Altitude:	Not Evaluated
Automatic ESVs:	Enabled
Disabled DMEs:	None

DME/DME (Continued)										
DMEs Used										
#	Name	Lat/Lon	MAGVAR	Range	Type	Source	Critical	Status	Time	Distance
1	EMI	N39° 29' 42.0266", W076° 58' 42.8591"	8.0 W	130	H		NO	Enabled	100 %	100 %
2	AML	N38° 56' 04.5329", W077° 28' 00.1263"	8.0 W	40	L		NO	Enabled	47.2 %	47.2 %
3	DCA	N38° 51' 34.0300", W077° 02' 11.1700"	9.0 W	40	L		NO	Enabled	100 %	100 %
4	ADW	N38° 48' 25.9900", W076° 51' 58.5200"	10.0 W	40	L		NO	Enabled	100 %	100 %
5	BAL	N39° 10' 15.8283", W076° 39' 40.5225"	11.0 W	40	L		NO	Enabled	100 %	100 %

Flight Check DME Selection						
Distance [NM]	Selected DMEs					Alternate
0.0	EMI	BAL	ADW	DCA		
1.1	AML	EMI	BAL	ADW	DCA	

Inertial Drift Segments			
#	Start Location	End Location	Length [NM]

Available DMEs by Waypoints			
Waypoint Before	Waypoint After	DME List	Suggested DMEs
HUNNN	HUTOO	EMI, AML, DCA, ADW, BAL	

**DME DME Assessment Results for MIIDY4 path HUNNN\_HUTOO**

**User Data Files**

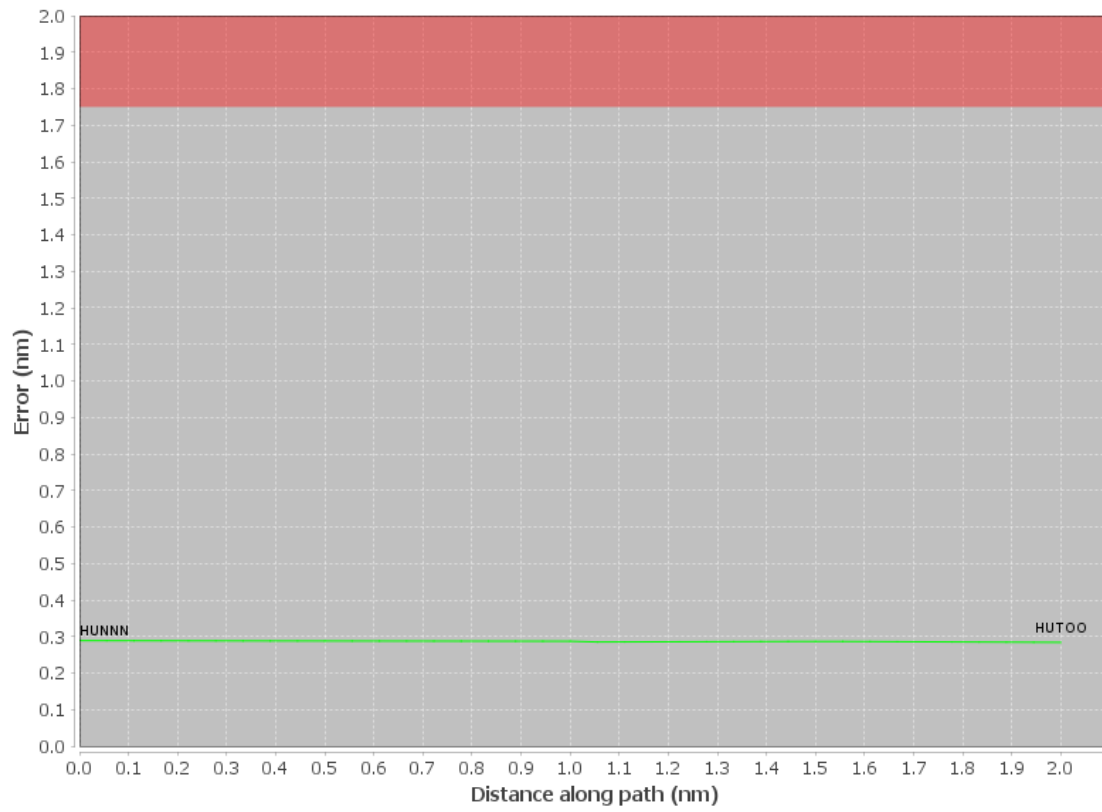
#	File Name
1	New Analysis.udt

**User DMEs**

#	Name	Lat/Lon	MAGVAR	Range	Elevation [ft]	Frequency	Replaces	Status
1	ENO ENO	N39° 13' 53.9281", W075° 30' 57.4918"	9.0 W	40	14.9	111.4	ENO	
	ESV:	Bearing [True]: 216.0° to 234.0° Bearing [Mag]: 225.0° to 243.0°				Arc Distance: Out to 44.0 NM Altitude: 3000.0 to 18100.0 ft		
2	ESV SIE [IFPA] SIE	N39° 05' 43.8324", W074° 48' 01.2382"	9.0 W	130	8.3	114.8	ESV SIE [IFPA]	
	ESV:	Bearing [True]: 234.0° to 257.0° Bearing [Mag]: 243.0° to 266.0°				Arc Distance: Out to 64.0 NM Altitude: 3900.0 to 14600.0 ft		

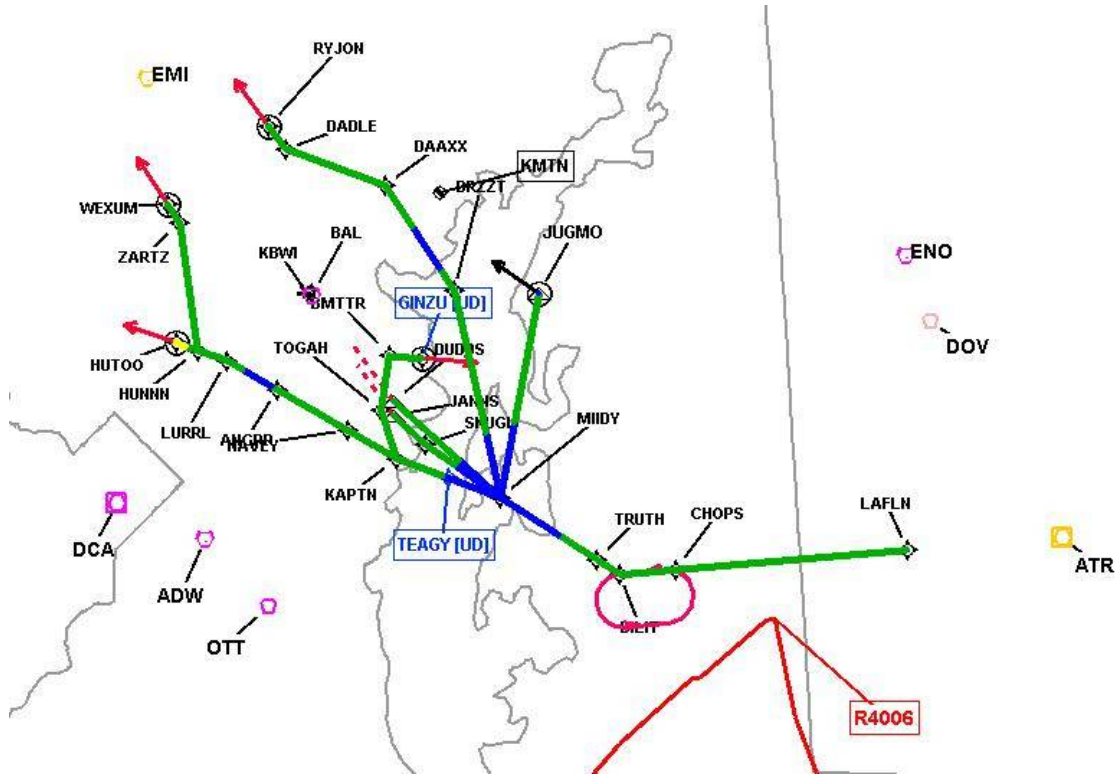
# DME DME Assessment Results for MIIDY4 path HUNNN\_HUTOO

## DME Error



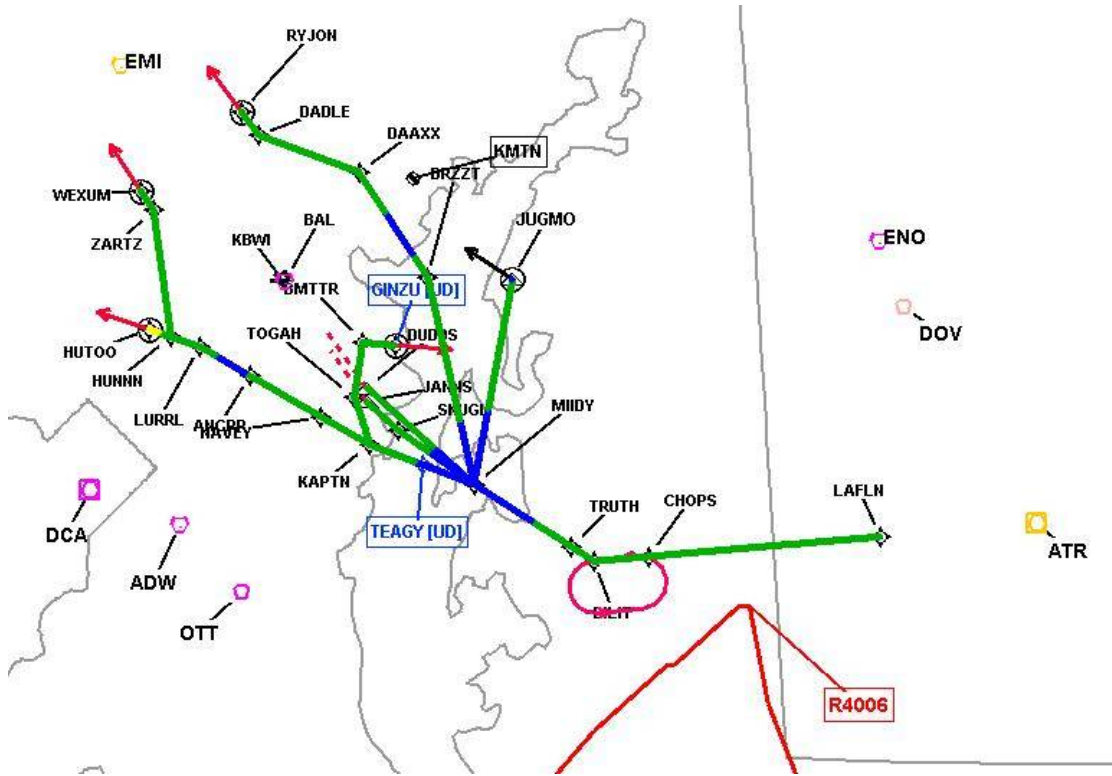
# DME DME Assessment Results for MIIDY4 path HUNNN\_HUTOO

Graphic Depiction 1



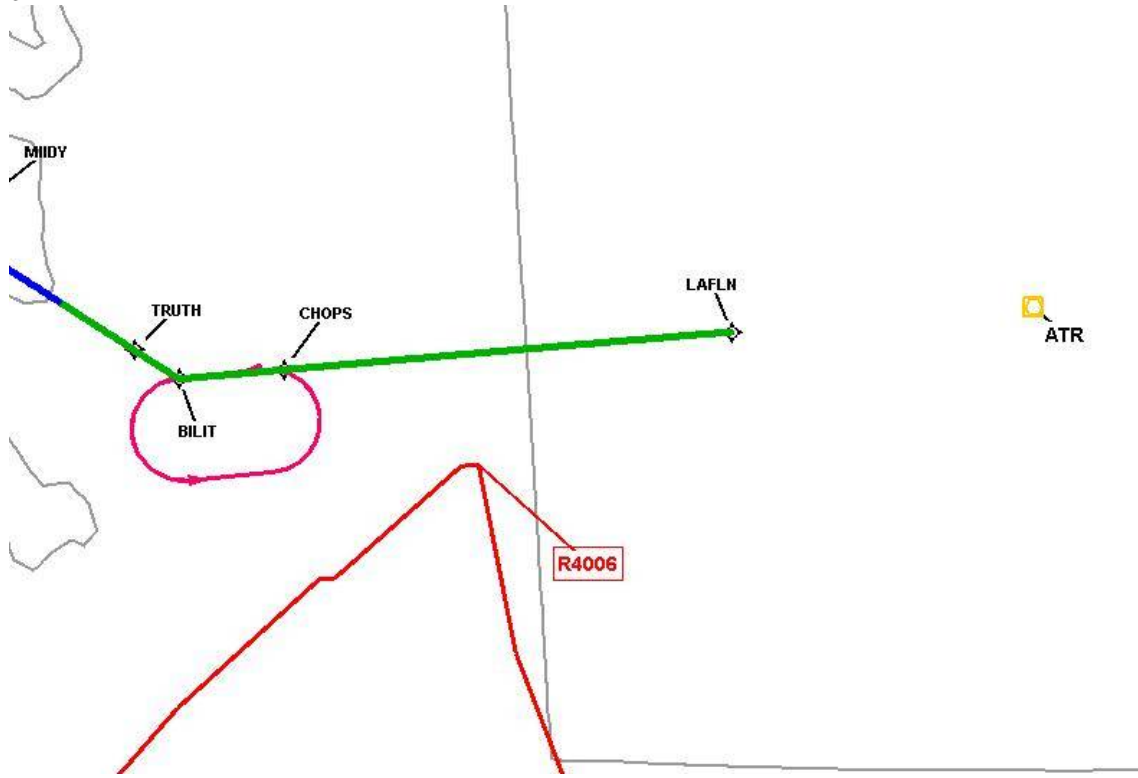
# DME DME Assessment Results for MIIDY4 path HUNNN\_HUTOO

Graphic Depiction 2



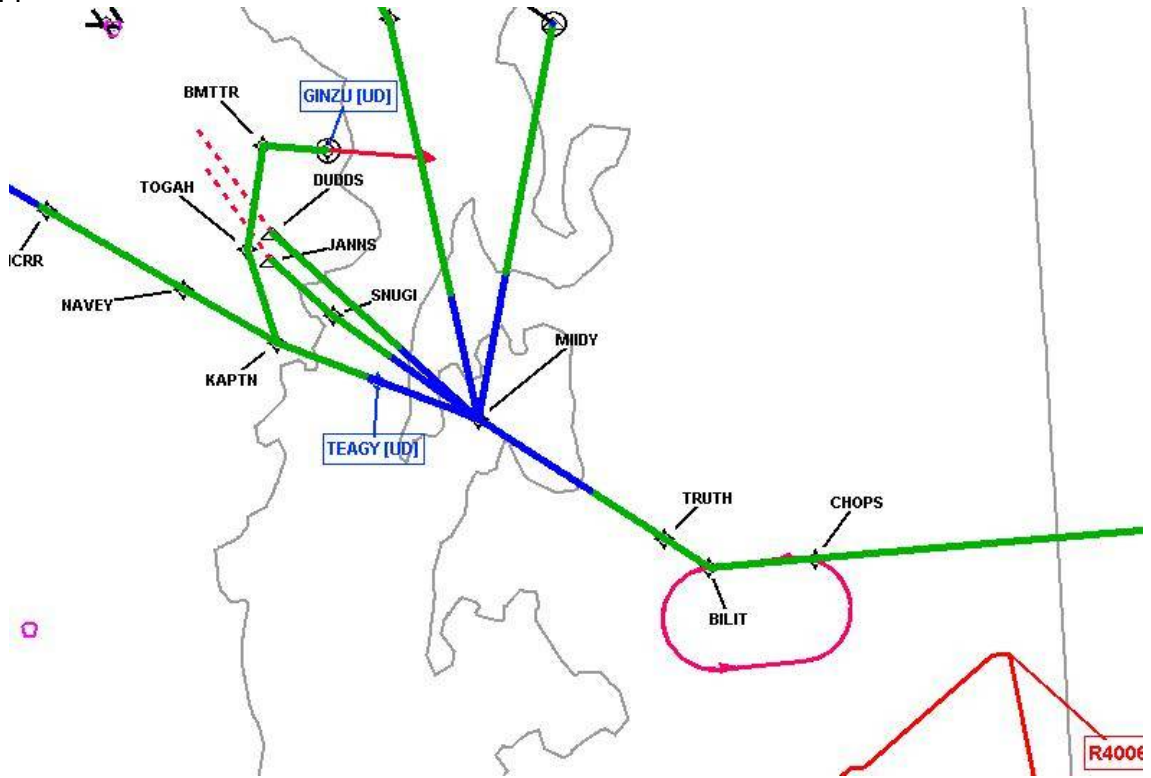
DME DME Assessment Results for MIIDY4 path HUNNN\_HUTOO

Graphic Depiction 3



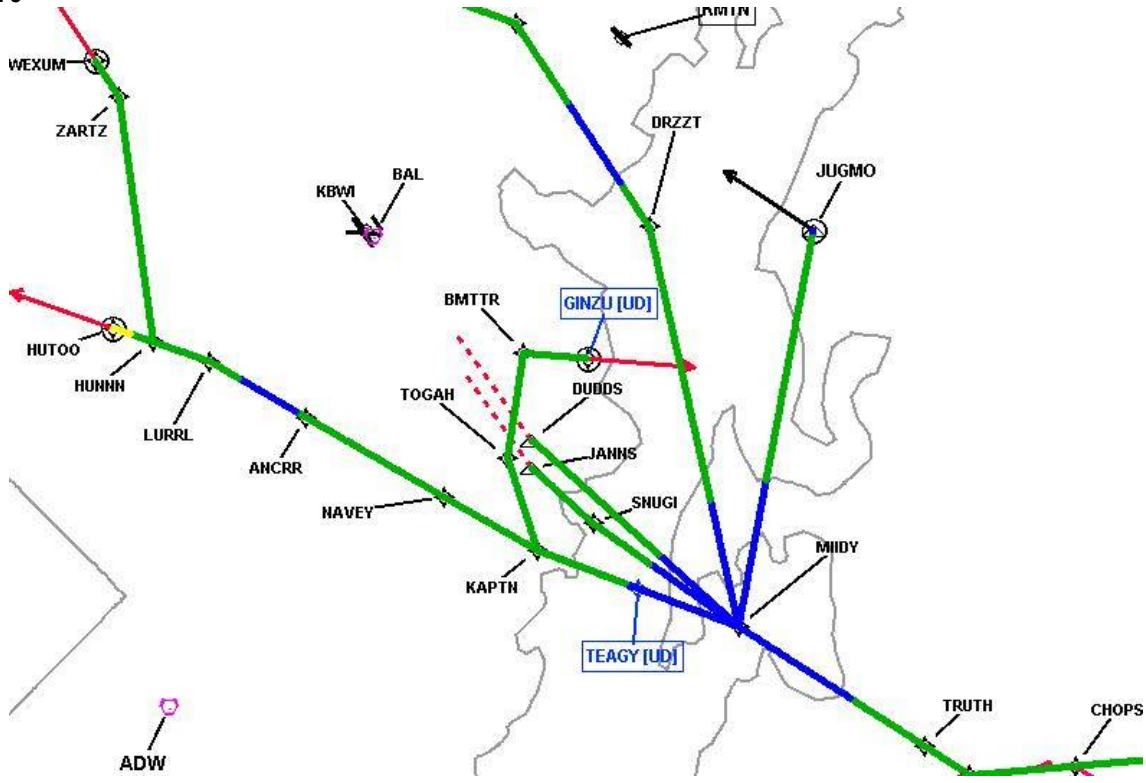
# DME DME Assessment Results for MIIDY4 path HUNNN\_HUTOO

Graphic Depiction 4



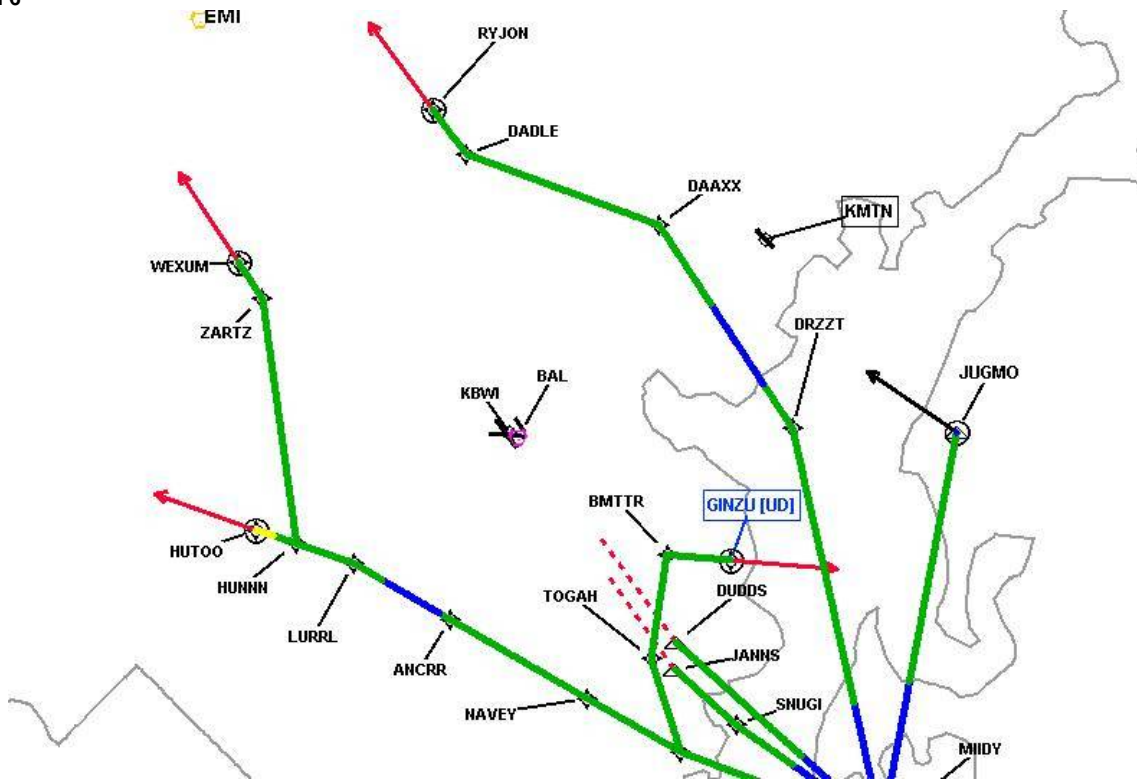
# DME DME Assessment Results for MIIDY4 path HUNNN\_HUTOO

Graphic Depiction 5



# DME DME Assessment Results for MIIDY4 path HUNNN\_HUTOO

Graphic Depiction 6



## DME DME Assessment Results for MIIDY4 path LAFLN\_WEXUM

Results Summary	
Flyability:	Completed
DME/DME:	Completed - No Critical DMEs
Name:	David C-CTR Cook
Project File:	C:\Users\David C-CTR Cook\Documents\TARGETS WORK\DME-DME WORK\5-14-2026 PUBLICATION\KBWI MIDDY4 STAR\KBWI MIIDY4 (RNAV) STAR DME-DME_20251016.tgs
Output File:	C:\Users\David C-CTR Cook\Documents\TARGETS WORK\DME-DME WORK\5-14-2026 PUBLICATION\KBWI MIDDY4 STAR\KBWI [IFPA] MIIDY4 20251210_1629 EST\LAFLN_WEXUM\KBWI MIIDY4 RNAV STAR LAFLN WEXUM 20251210_1629 EST.pdf
Procedure Name:	MIIDY4
Software: DmeDmePlugin:	7.6.0
Date/Time:	12/10/2025 16:29 EST
Databases:	MITRE 3DEP 3 arcsec

Failures
No Failures

Warnings
No Warnings

Informational
No Informational

Notes For Flight Check
None

Flight Plan							
Name	Type	Lat/Lon	Altitude (ft)	VNAV Mode	Ground Speed (kts)	Turn Type	Leg Type
LAFLN	WP	N38° 47' 27.4000", W075° 30' 47.7200"	5000	VNAV	250	FLY_BY	TF
CHOPS	WP	N38° 45' 41.8100", W075° 57' 36.1800"	5000	VNAV	250	FLY_BY	TF
BILIT	WP	N38° 45' 15.8200", W076° 03' 57.5900"	5000	VNAV	250	FLY_BY	TF
TRUTH	WP	N38° 46' 36.0800", W076° 06' 38.3700"	5000	VNAV	250	FLY_BY	TF
MIIDY	WP	N38° 52' 09.4000", W076° 17' 48.4600"	1300	VNAV	250	FLY_BY	TF
TEAGY	WP	N38° 53' 55.1900", W076° 23' 48.0200"	1300	VNAV	230	FLY_BY	TF
KAPTN	WP	N38° 55' 41.7900", W076° 29' 51.7200"	1300	VNAV	230	FLY_BY	TF
NAVEY	WP	N38° 58' 10.9900", W076° 35' 29.2600"	1300	VNAV	230	FLY_BY	TF
ANCRR	WP	N39° 01' 52.1500", W076° 43' 43.6000"	1300	VNAV	210	FLY_BY	TF
LURRL	WP	N39° 04' 28.6300", W076° 49' 30.2300"	1300	VNAV	200	FLY_BY	TF
HUNNN	WP	N39° 05' 23.1000", W076° 52' 54.3500"	1300	VNAV	200	FLY_BY	TF
ZARTZ	WP	N39° 16' 46.1900", W076° 54' 57.2400"	1300	VNAV	210	FLY_BY	TF
WEXUM	WP	N39° 18' 26.5700", W076° 56' 22.1100"	1300	VNAV	200	FLY_OVER	TF

## DME DME Assessment Results for MIIDY4 path LAFLN\_WEXUM

Flyability	
Flight Type:	RNAV_STAR
Selected Airport:	KBWI [IFPA]
Climb Gradient:	None assigned
Speeds:	200 Ground Speed to 11000 FT
	240 Ground Speed to 18000 FT
	260 Ground Speed to 24000 FT
	340 Ground Speed above 24000 FT
Descent During a Turn:	Allowed
VNAV Mode:	Flight Plan

DME/DME	
RNP:	RNP 2
Flight Mode:	Manual
Line of Sight (DTED Level 0 Max):	Evaluated
Inertial Drift:	Enabled
Initial Drift:	0.558 NM
INS Drift Rate:	8.0 NM/Hour
Range Mode:	OSV
RNP Edges:	Evaluated
Min DME Range:	3.0 NM
DME Types:	DME, VOR-DME, VORTAC, TACAN
DME Include Angles:	30 to 150
Critical DMEs:	Allowed
DoD Facilities:	Not included
Foreign Facilities:	Not included
High DMEs:	Included
Low DMEs:	Included
Terminal DMEs:	Included
Flight Check DMEs:	Not selected
Higher Altitudes:	Not Evaluated
Near Maximum Altitude:	Not Evaluated
Automatic ESVs:	Enabled
Disabled DMEs:	None

DME/DME (Continued)										
DMEs Used										
#	Name	Lat/Lon	MAGVAR	Range	Type	Source	Critical	Status	Time	Distance
1	EMI	N39° 29' 42.0266", W076° 58' 42.8591"	8.0 W	130	H		NO	Enabled	16.6 %	14.3 %
2	DCA	N38° 51' 34.0300", W077° 02' 11.1700"	9.0 W	40	L		NO	Enabled	21.3 %	19.6 %
3	ADW	N38° 48' 25.9900", W076° 51' 58.5200"	10.0 W	40	L		NO	Enabled	50.6 %	48 %
4	ENO	N39° 13' 53.9281", W075° 30' 57.4918"	9.0 W	40	L		NO	Enabled	36.4 %	39.2 %
5	DOV	N39° 07' 56.6400", W075° 28' 02.6700"	12.0 W	25	T		NO	Enabled	2.6 %	2.8 %
6	BAL	N39° 10' 15.8283", W076° 39' 40.5225"	11.0 W	40	L		NO	Enabled	46 %	42.6 %
7	SIE	N39° 05' 43.8324", W074° 48' 01.2382"	9.0 W	130	H		NO	Enabled	26.5 %	28.5 %
8	OTT	N38° 42' 21.1352", W076° 44' 41.0854"	10.0 W	40	L		NO	Enabled	0.8 %	0.8 %
9	ATR	N38° 48' 35.3168", W075° 12' 40.7605"	9.0 W	40	L		NO	Enabled	28.8 %	31 %
10	ESL	N39° 13' 31.7740", W078° 59' 22.2000"	6.0 W	130	DL		NO	Enabled	0.9 %	0.8 %

**DME DME Assessment Results for MIIDY4 path LAFLN\_WEXUM**

<b>Flight Check DME Selection</b>						
<b>Distance [NM]</b>	<b>Selected DMEs</b>					<b>Alternate</b>
0.0	ENO	ATR	DOV	SIE		
2.4	ENO	ATR	SIE			
23.7	ENO	ATR				
24.5	ENO	ADW	ATR			
25.8	ENO	ADW				
32.5						
44.4	ADW	BAL				
47.4	ADW	BAL	OTT			
47.8	ADW	BAL				
54.2	DCA	BAL	ADW			
55.6	DCA	BAL	ADW	OTT		
56.0	DCA	BAL	ADW			
58.3	DCA	BAL				
61.8						
64.9	ADW	BAL				
66.3	EMI	BAL	DCA	ADW		
66.6	ADW	BAL				
67.2	EMI	BAL	ADW	DCA		
69.4	EMI	BAL	ADW			
70.7	EMI	BAL	ADW	DCA		
76.6	DCA	BAL	ADW	EMI	ESL	
76.7	DCA	BAL	ADW	EMI		
77.0	ADW	BAL	EMI			
77.3	ADW	BAL	EMI	ESL		
78.0	ADW	BAL	EMI			
78.8	ADW	BAL				

<b>Inertial Drift Segments</b>			
<b>#</b>	<b>Start Location</b>	<b>End Location</b>	<b>Length [NM]</b>
1	N38° 48' 45.9562", W076° 10' 59.0041"	N38° 54' 07.1982", W076° 24' 28.9212"	11.8614
2	N39° 02' 06.0710", W076° 44' 14.3943"	N39° 03' 38.2400", W076° 47' 38.4917"	3.0624

<b>Available DMEs by Waypoints</b>			
<b>Waypoint Before</b>	<b>Waypoint After</b>	<b>DME List</b>	<b>Suggested DMEs</b>
LAFLN	CHOPS	ENO, DOV, SIE, ATR	
CHOPS	BILIT	ADW, ENO, SIE, ATR	
BILIT	TRUTH	ADW, ENO	
TRUTH	MIIDY	ADW, ENO	
MIIDY	TEAGY		
TEAGY	KAPTN	ADW, BAL, OTT	
KAPTN	NAVEY	ADW, BAL	
NAVEY	ANCRR	DCA, ADW, BAL, OTT	
ANCRR	LURRL	EMI, DCA, ADW, BAL	
LURRL	HUNNN	EMI, DCA, ADW, BAL	
HUNNN	ZARTZ	EMI, DCA, ADW, BAL, ESL	
ZARTZ	WEXUM	ADW, BAL	

**DME DME Assessment Results for MIIDY4 path LAFLN\_WEXUM**

**User Data Files**

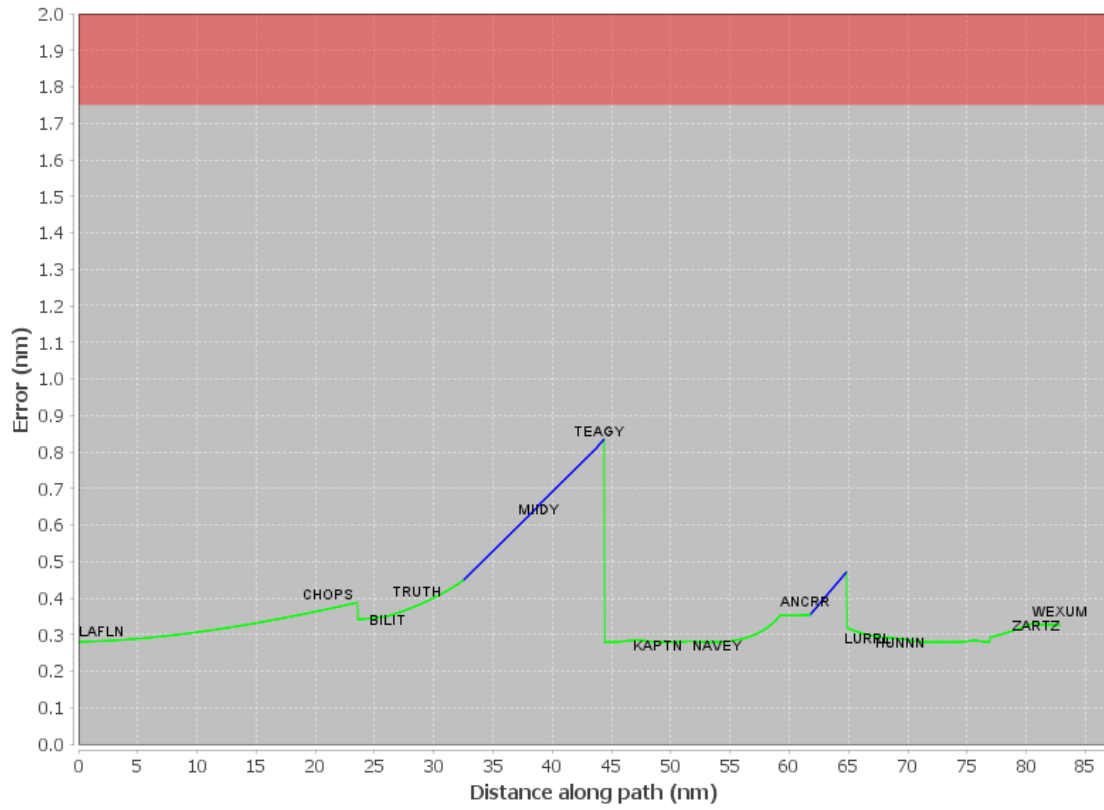
#	File Name
1	New Analysis.udt

**User DMEs**

#	Name	Lat/Lon	MAGVAR	Range	Elevation [ft]	Frequency	Replaces	Status
1	ENO ENO	N39° 13' 53.9281", W075° 30' 57.4918"	9.0 W	40	14.9	111.4	ENO	
	ESV:	Bearing [True]: 216.0° to 234.0° Bearing [Mag]: 225.0° to 243.0°				Arc Distance: Out to 44.0 NM Altitude: 3000.0 to 18100.0 ft		
2	ESV SIE [IFPA] SIE	N39° 05' 43.8324", W074° 48' 01.2382"	9.0 W	130	8.3	114.8	ESV SIE [IFPA]	
	ESV:	Bearing [True]: 234.0° to 257.0° Bearing [Mag]: 243.0° to 266.0°				Arc Distance: Out to 64.0 NM Altitude: 3900.0 to 14600.0 ft		

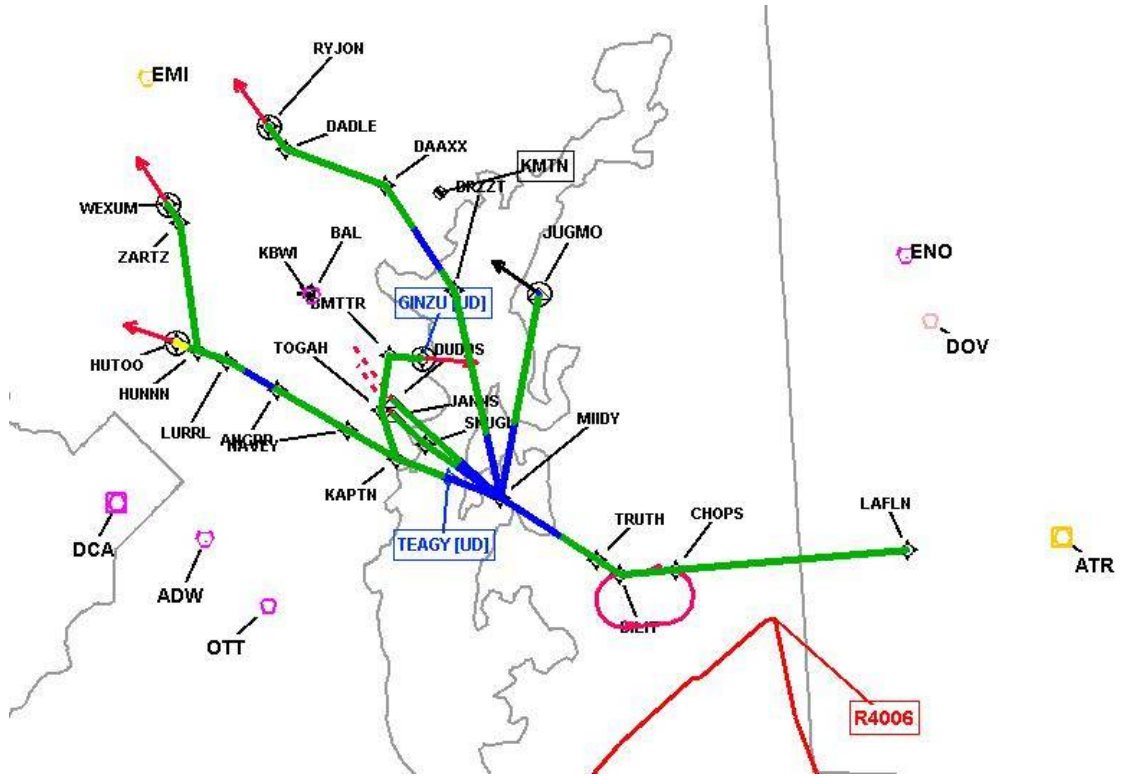
# DME DME Assessment Results for MIIDY4 path LAFLN\_WEXUM

## DME Error



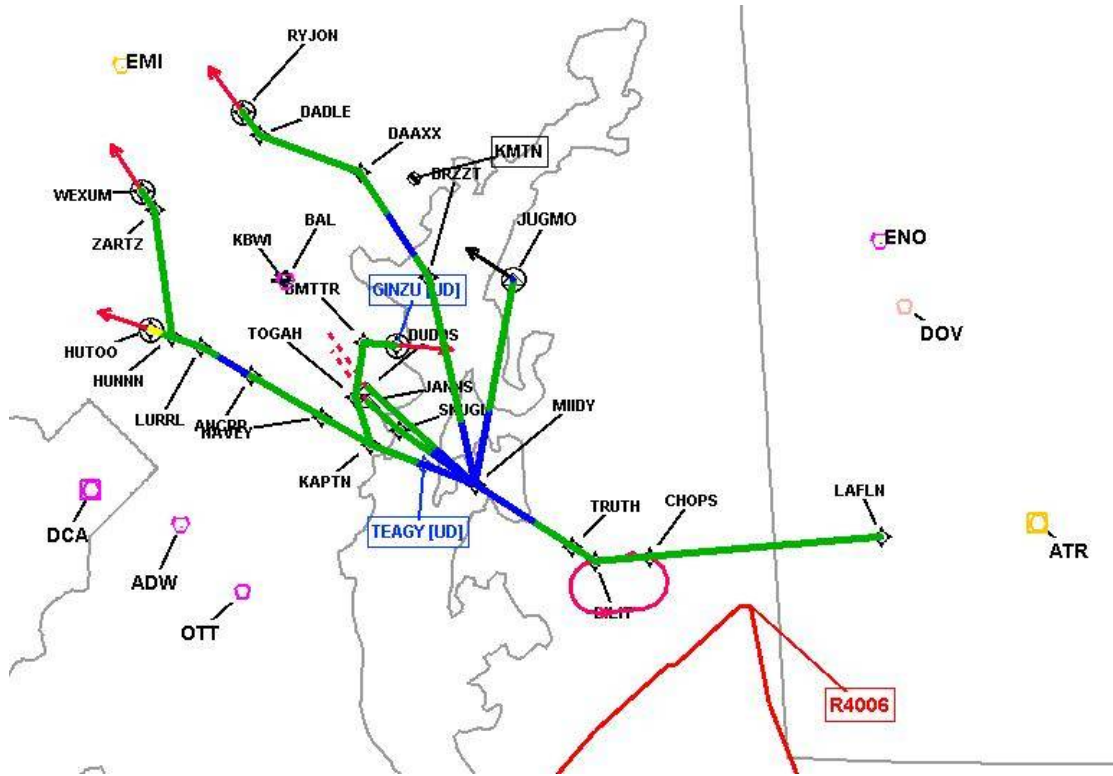
# DME DME Assessment Results for MIIDY4 path LAFLN\_WEXUM

Graphic Depiction 1



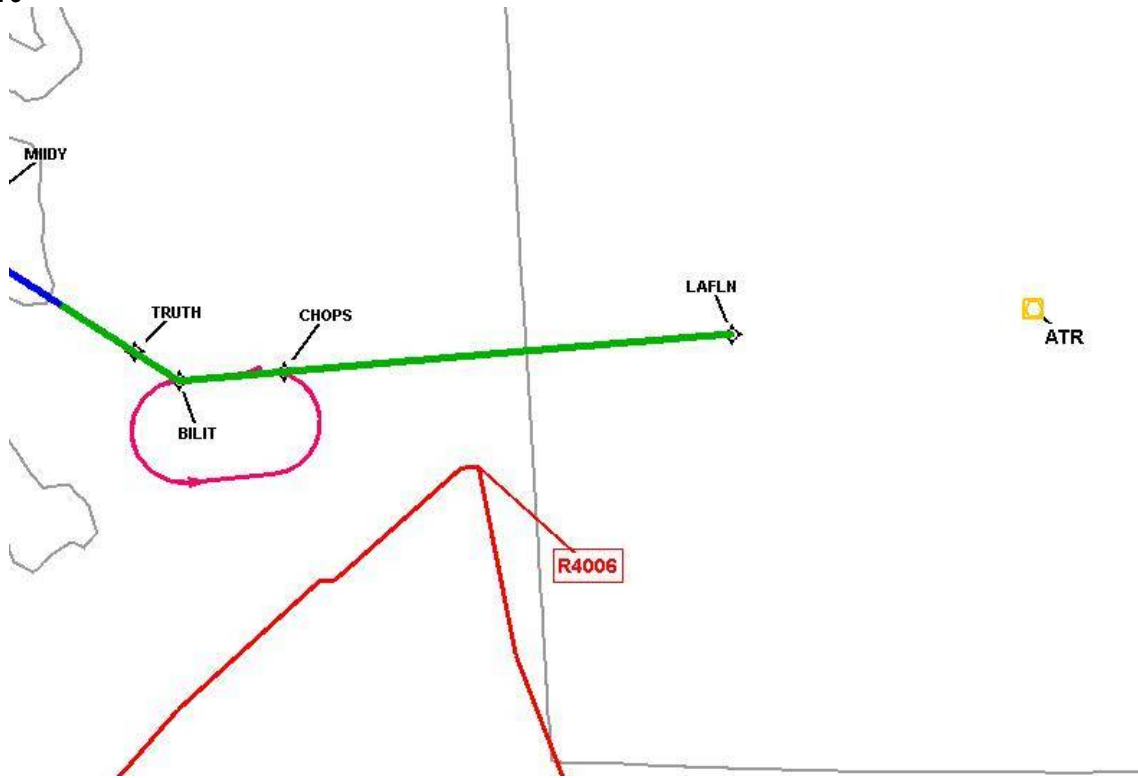
# DME DME Assessment Results for MIIDY4 path LAFLN\_WEXUM

Graphic Depiction 2



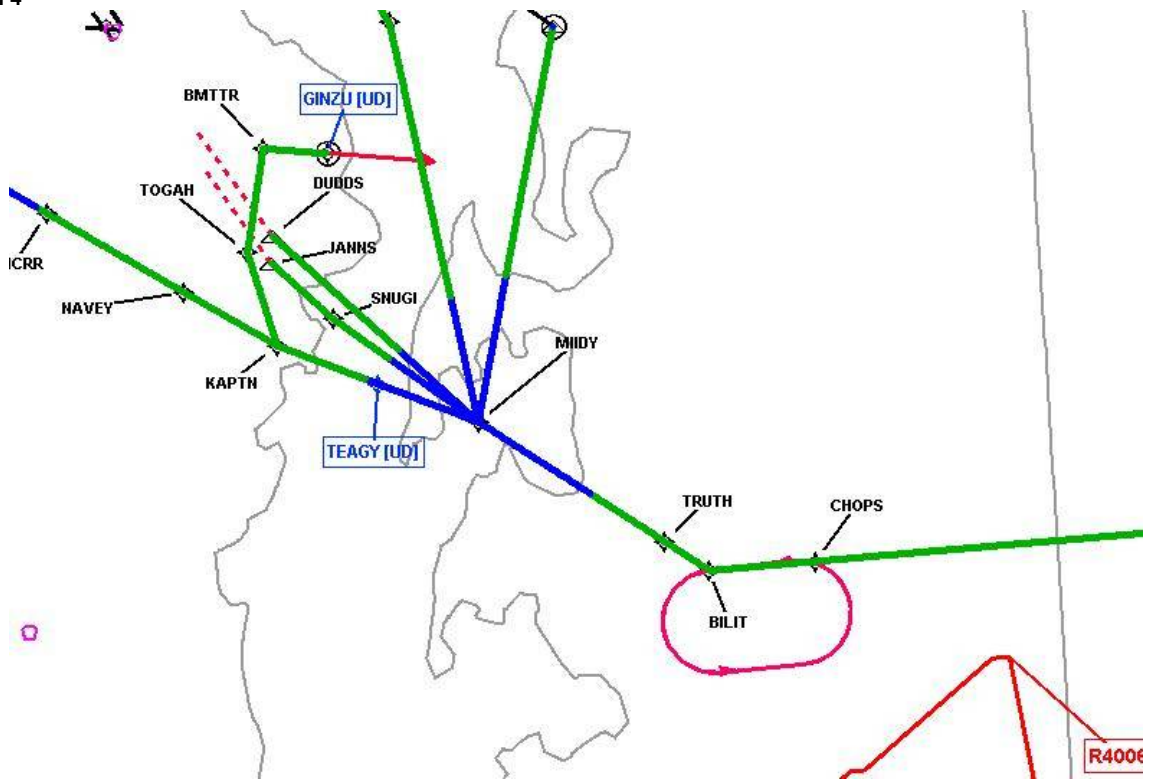
# DME DME Assessment Results for MIIDY4 path LAFLN\_WEXUM

Graphic Depiction 3



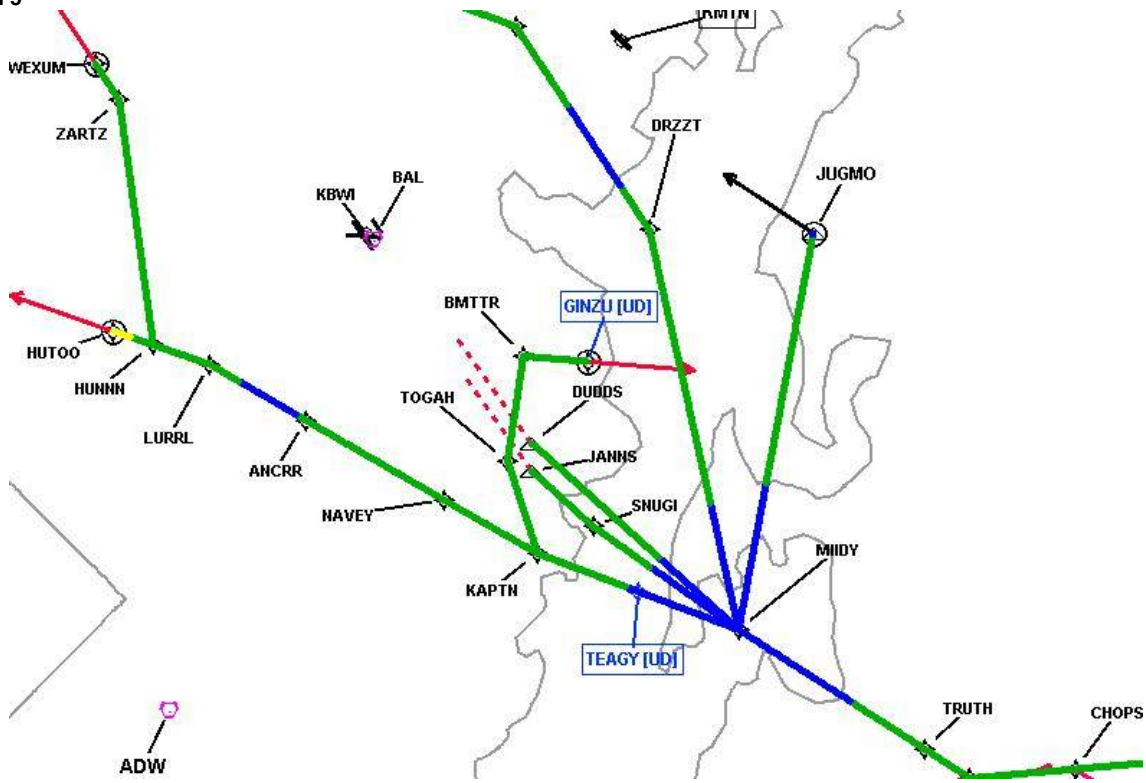
# DME DME Assessment Results for MIIDY4 path LAFLN\_WEXUM

Graphic Depiction 4



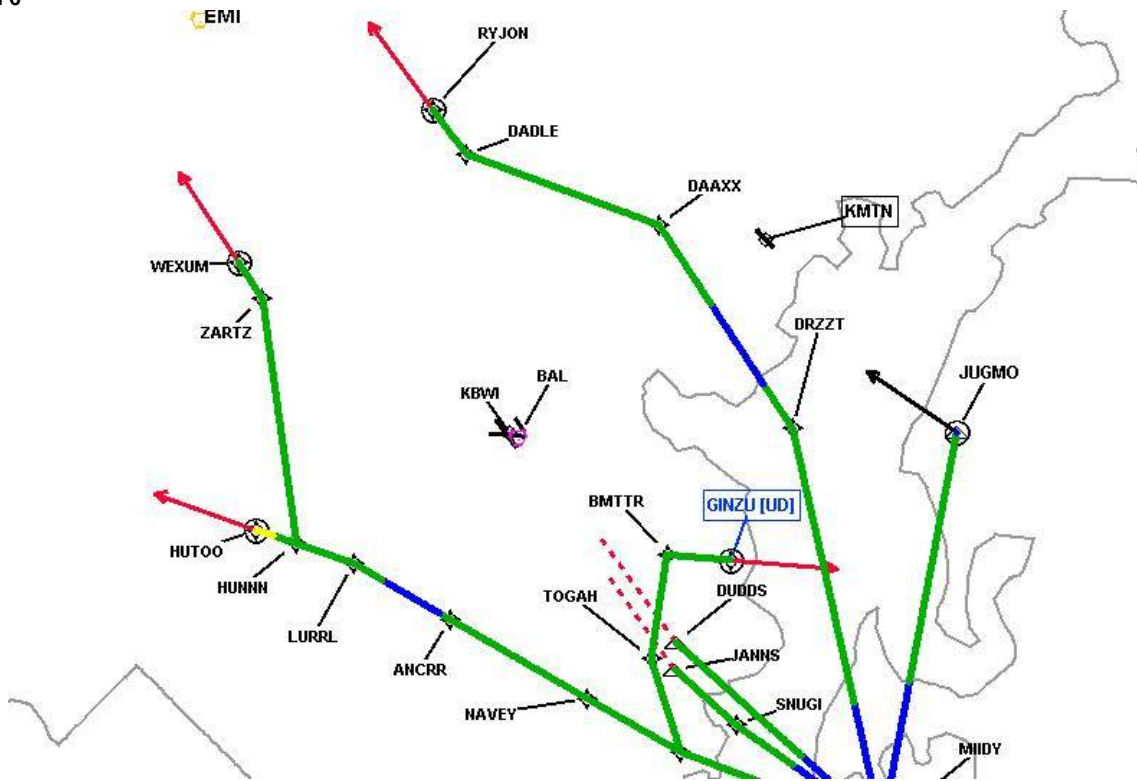
# DME DME Assessment Results for MIIDY4 path LAFLN\_WEXUM

Graphic Depiction 5



# DME DME Assessment Results for MIIDY4 path LAFLN\_WEXUM

Graphic Depiction 6



## DME DME Assessment Results for MIIDY4 path MIIDY\_DUDDS

Results Summary	
Flyability:	Completed
DME/DME:	Completed - No Critical DMEs
Name:	David C-CTR Cook
Project File:	C:\Users\David C-CTR Cook\Documents\TARGETS WORK\DME-DME WORK\5-14-2026 PUBLICATION\KBWI MIDDY4 STAR\KBWI MIIDY4 (RNAV) STAR DME-DME_20251016.tgs
Output File:	C:\Users\David C-CTR Cook\Documents\TARGETS WORK\DME-DME WORK\5-14-2026 PUBLICATION\KBWI MIDDY4 STAR\KBWI [IFPA] MIIDY4 20251210_1629 EST\MIIDY_DUDDSKBWI MIIDY4 RNAV STAR MIIDY DUDDS 20251210_1629 EST.pdf
Procedure Name:	MIIDY4
Software: DmeDmePlugin:	7.6.0
Date/Time:	12/10/2025 16:29 EST
Databases:	MITRE 3DEP 3 arcsec

Failures
No Failures

Warnings
No Warnings

Informational
No Informational

Notes For Flight Check
None

Flight Plan							
Name	Type	Lat/Lon	Altitude (ft)	VNAV Mode	Ground Speed (kts)	Turn Type	Leg Type
MIIDY	WP	N38° 52' 09.4000", W076° 17' 48.4600"	1300	VNAV	250	FLY_BY	TF
DUDDS	WP	N39° 00' 48.2100", W076° 30' 10.6100"	1300	VNAV	200	FLY_BY	TF

Flyability	
Flight Type:	RNAV_STAR
Selected Airport:	KBWI [IFPA]
Climb Gradient:	None assigned
Speeds:	200 Ground Speed to 11000 FT
	240 Ground Speed to 18000 FT
	260 Ground Speed to 24000 FT
	340 Ground Speed above 24000 FT
Descent During a Turn:	Allowed
VNAV Mode:	Flight Plan

## DME DME Assessment Results for MIIDY4 path MIIDY\_DUDDS

DME/DME	
RNP:	RNP 2
Flight Mode:	Manual
Line of Sight (DTED Level 0 Max):	Evaluated
Inertial Drift:	Enabled
Initial Drift:	0.558 NM
INS Drift Rate:	8.0 NM/Hour
Range Mode:	OSV
RNP Edges:	Evaluated
Min DME Range:	3.0 NM
DME Types:	DME, VOR-DME, VORTAC, TACAN
DME Include Angles:	30 to 150
Critical DMEs:	Allowed
DoD Facilities:	Not included
Foreign Facilities:	Not included
High DMEs:	Included
Low DMEs:	Included
Terminal DMEs:	Included
Flight Check DMEs:	Not selected
Higher Altitudes:	Not Evaluated
Near Maximum Altitude:	Not Evaluated
Automatic ESVs:	Enabled
Disabled DMEs:	None

DME/DME (Continued)										
DMEs Used										
#	Name	Lat/Lon	MAGVAR	Range	Type	Source	Critical	Status	Time	Distance
1	DCA	N38° 51' 34.0300", W077° 02' 11.1700"	9.0 W	40	L		NO	Enabled	15 %	15 %
2	ADW	N38° 48' 25.9900", W076° 51' 58.5200"	10.0 W	40	L		NO	Enabled	62 %	62 %
3	BAL	N39° 10' 15.8283", W076° 39' 40.5225"	11.0 W	40	L		NO	Enabled	62 %	62 %
4	OTT	N38° 42' 21.1352", W076° 44' 41.0854"	10.0 W	40	L		NO	Enabled	2.1 %	2.1 %

Flight Check DME Selection						
Distance [NM]	Selected DMEs					Alternate
0.0						
4.9	ADW	BAL				
9.4	OTT	BAL	ADW			
9.8	ADW	BAL				
11.0	ADW	BAL	DCA			

Inertial Drift Segments			
#	Start Location	End Location	Length [NM]
1	N38° 52' 09.4000", W076° 17' 48.4600"	N38° 55' 26.5371", W076° 22' 29.8851"	4.9177

Available DMEs by Waypoints			
Waypoint Before	Waypoint After	DME List	Suggested DMEs
MIIDY	DUDDS	DCA, ADW, BAL, OTT	

**DME DME Assessment Results for MIIDY4 path MIIDY\_DUDDS**

**User Data Files**

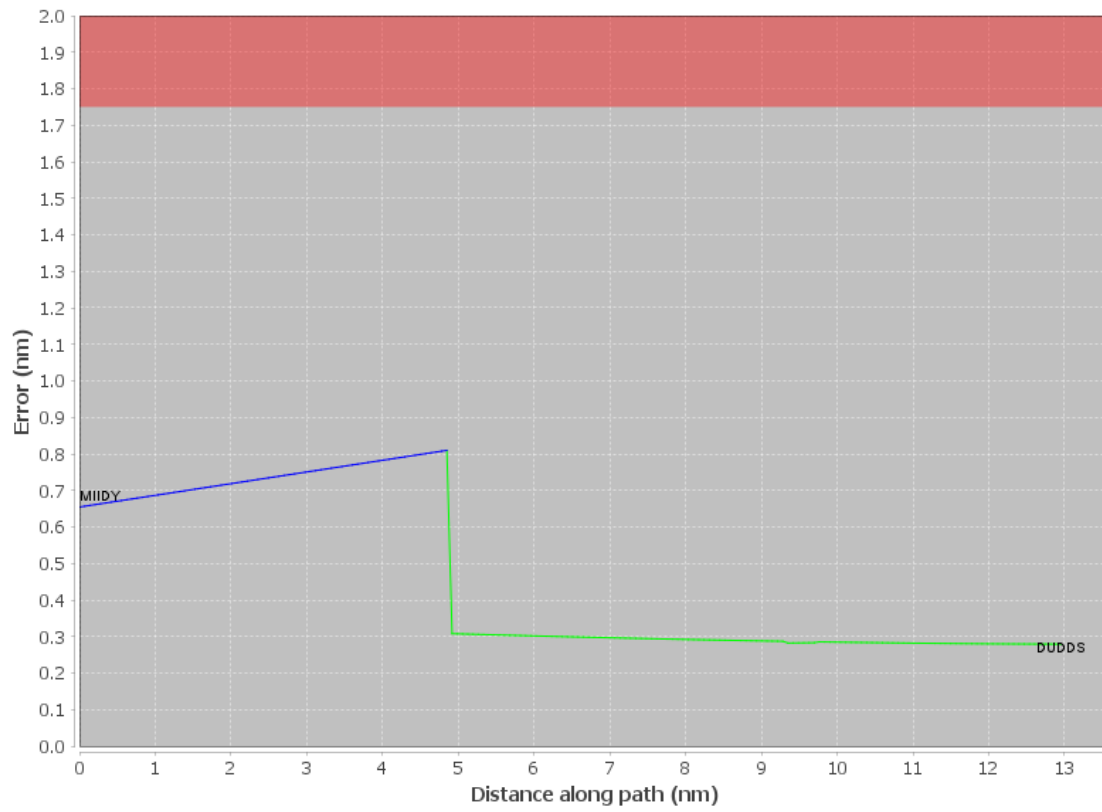
#	File Name
1	New Analysis.udt

**User DMEs**

#	Name	Lat/Lon	MAGVAR	Range	Elevation [ft]	Frequency	Replaces	Status
1	ENO ENO	N39° 13' 53.9281", W075° 30' 57.4918"	9.0 W	40	14.9	111.4	ENO	
	ESV:	Bearing [True]: 216.0° to 234.0° Bearing [Mag]: 225.0° to 243.0°				Arc Distance: Out to 44.0 NM Altitude: 3000.0 to 18100.0 ft		
2	ESV SIE [IFPA] SIE	N39° 05' 43.8324", W074° 48' 01.2382"	9.0 W	130	8.3	114.8	ESV SIE [IFPA]	
	ESV:	Bearing [True]: 234.0° to 257.0° Bearing [Mag]: 243.0° to 266.0°				Arc Distance: Out to 64.0 NM Altitude: 3900.0 to 14600.0 ft		

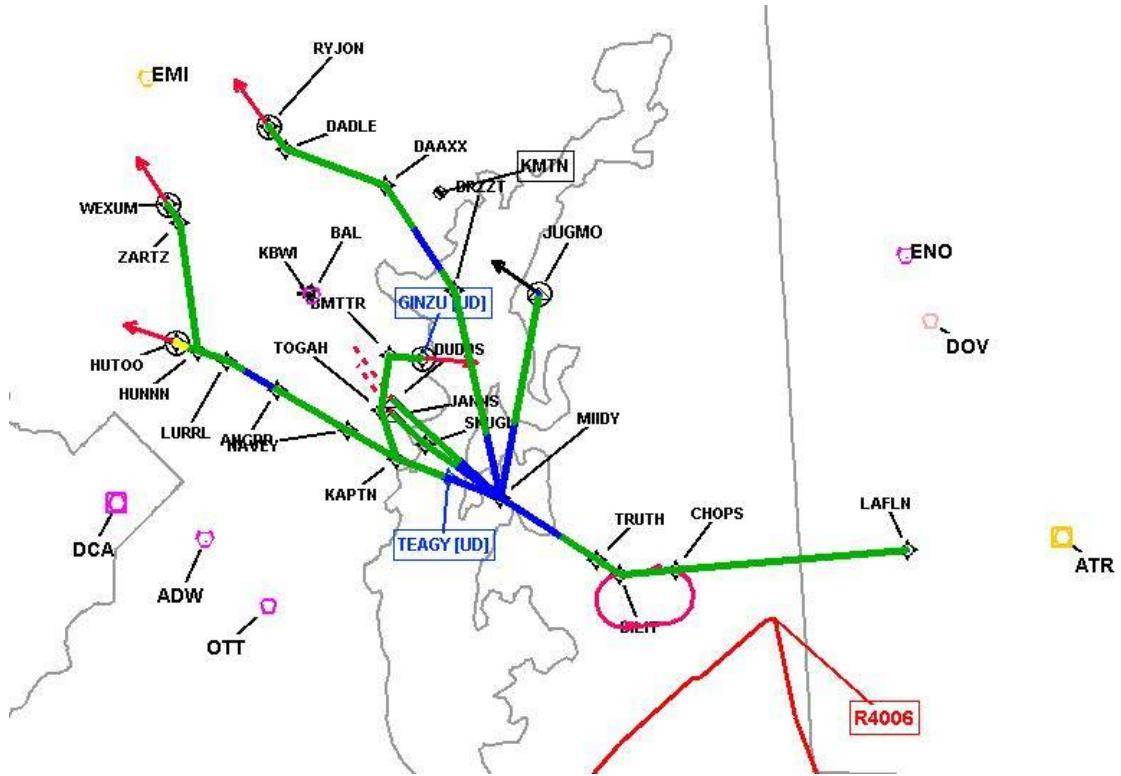
# DME DME Assessment Results for MIIDY4 path MIIDY\_DUDDS

## DME Error



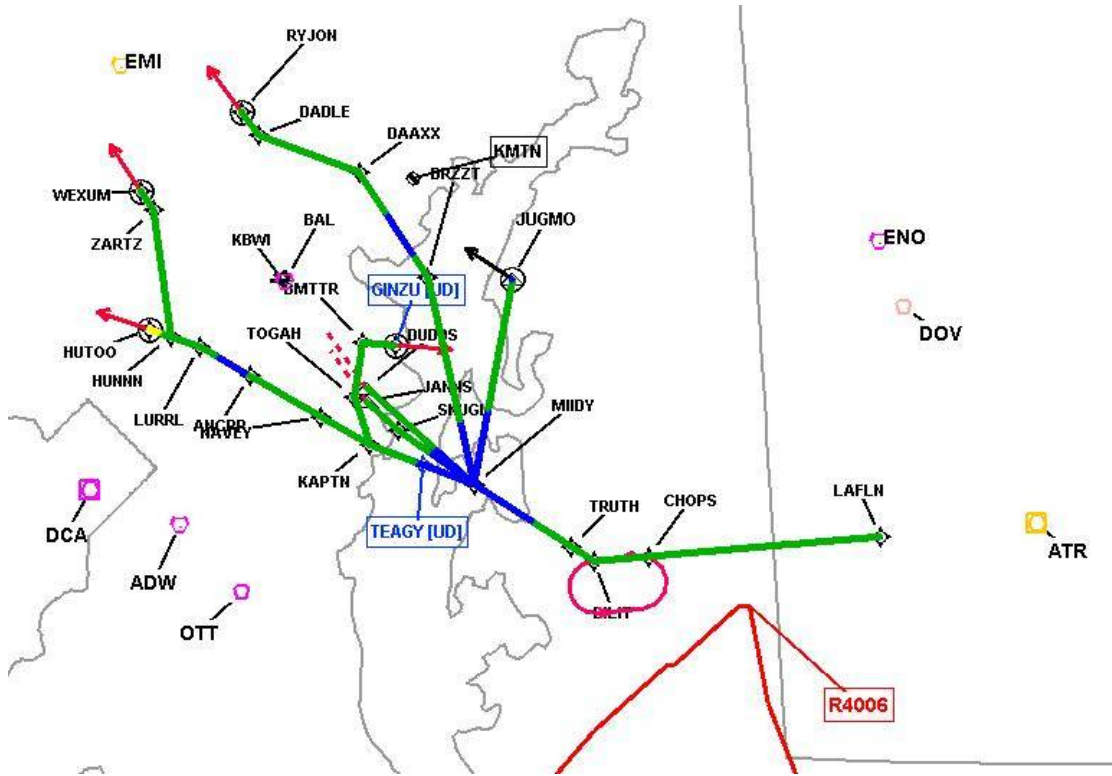
# DME DME Assessment Results for MIIDY4 path MIIDY\_DUDDS

Graphic Depiction 1



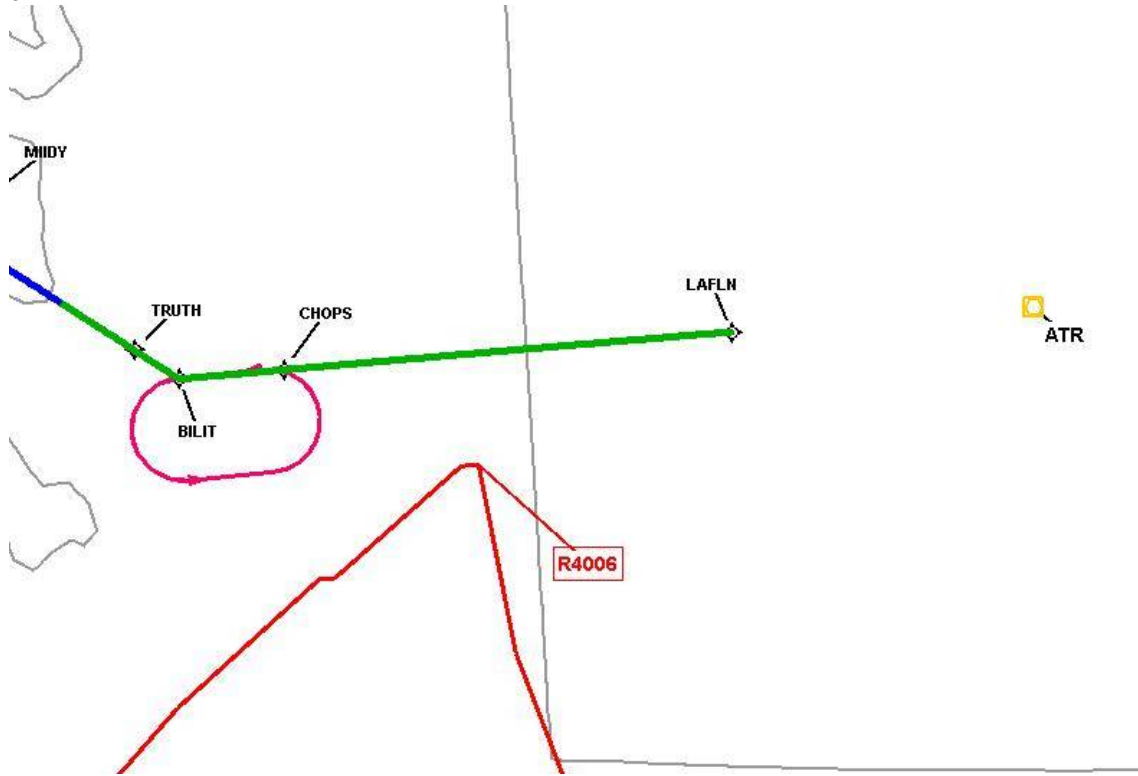
# DME DME Assessment Results for MIIDY4 path MIIDY\_DUDDS

Graphic Depiction 2



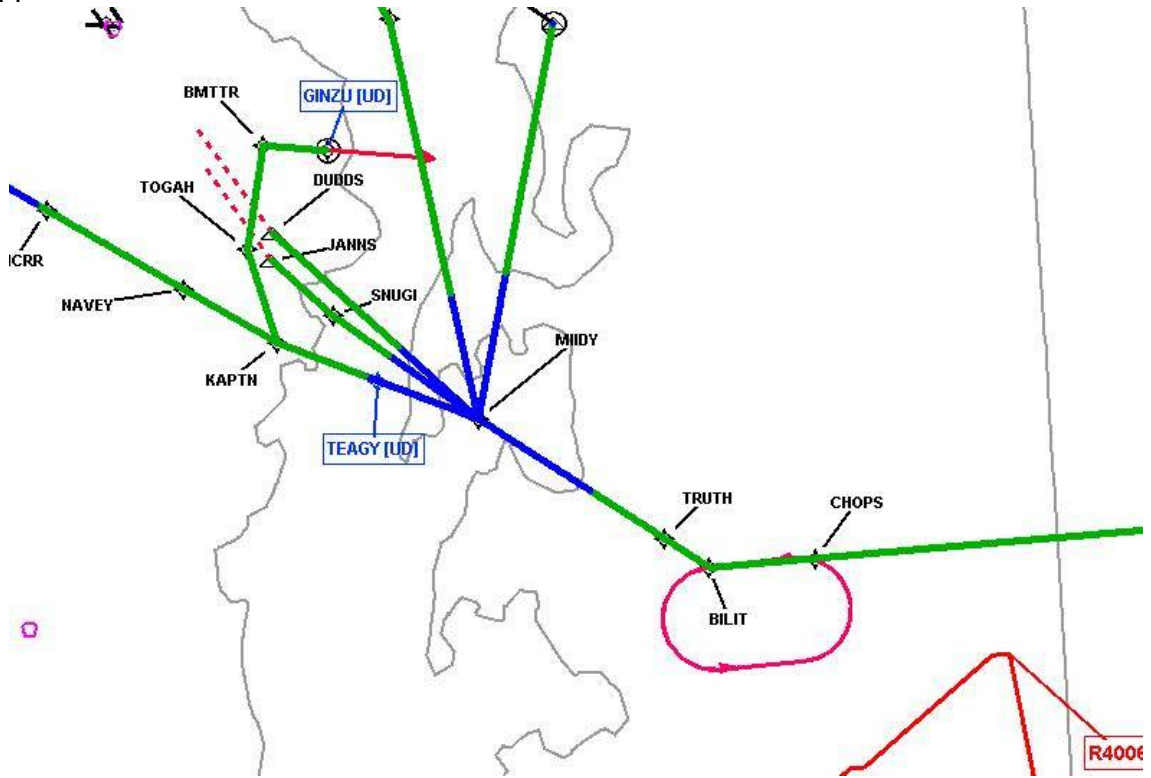
# DME DME Assessment Results for MIIDY4 path MIIDY\_DUDDS

Graphic Depiction 3



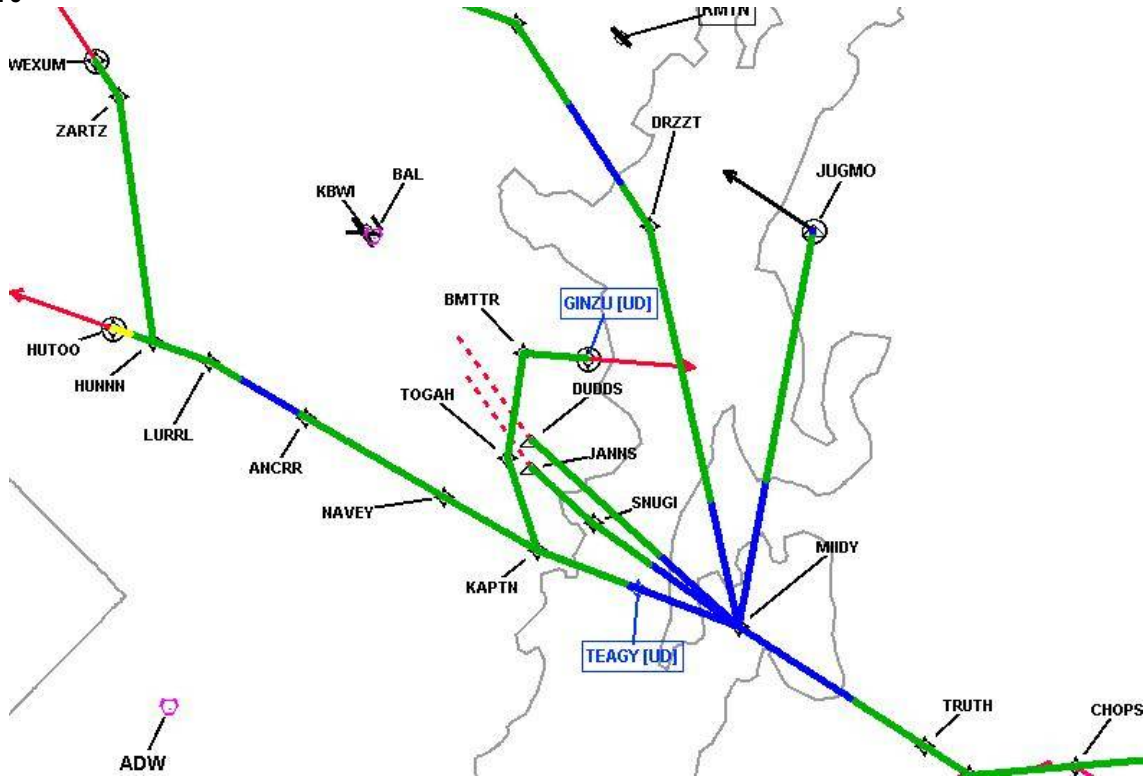
# DME DME Assessment Results for MIIDY4 path MIIDY\_DUDDS

Graphic Depiction 4



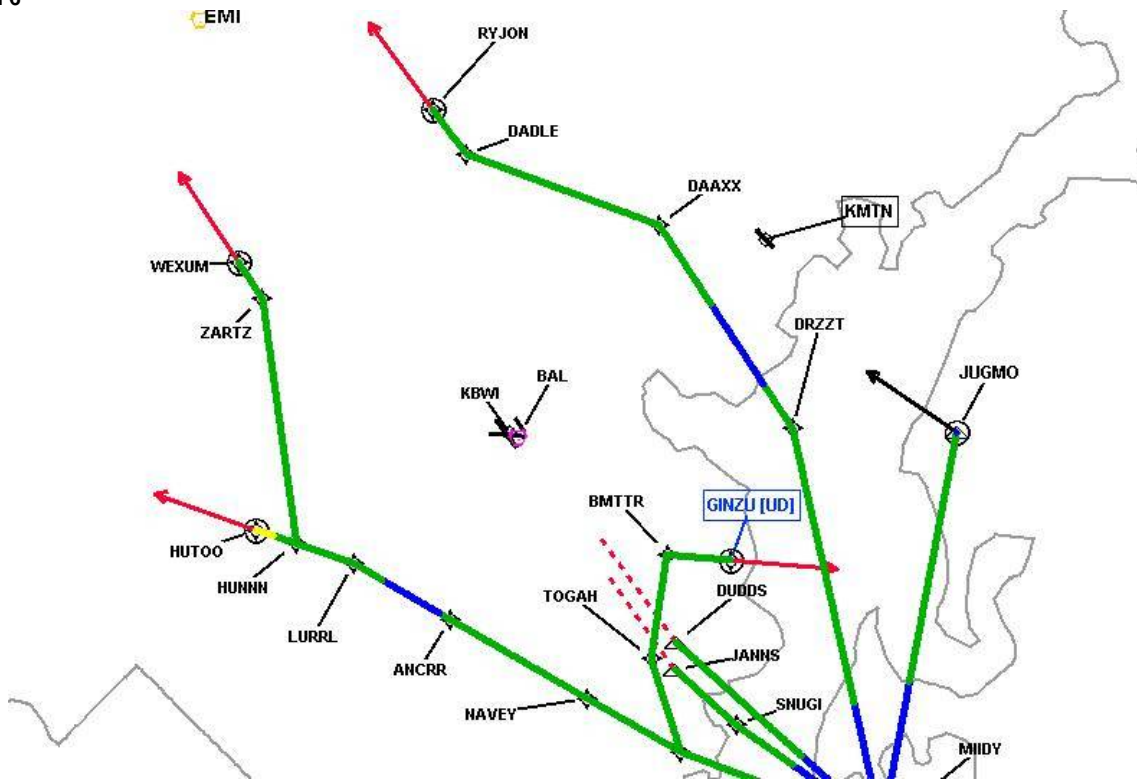
# DME DME Assessment Results for MIIDY4 path MIIDY\_DUDDS

Graphic Depiction 5



DME DME Assessment Results for MIIDY4 path MIIDY\_DUDDS

Graphic Depiction 6



## DME DME Assessment Results for MIIDY4 path MIIDY\_GINZU

### Results Summary

Flyability:	Completed
DME/DME:	Completed - No Critical DMEs
Name:	David C-CTR Cook
Project File:	C:\Users\David C-CTR Cook\Documents\TARGETS WORK\DME-DME WORK\5-14-2026 PUBLICATION\KBWI MIDDY4 STAR\KBWI MIIDY4 (RNAV) STAR DME-DME_20251016.tgs
Output File:	C:\Users\David C-CTR Cook\Documents\TARGETS WORK\DME-DME WORK\5-14-2026 PUBLICATION\KBWI MIDDY4 STAR\KBWI [IFPA] MIIDY4 20251210_1629 EST\MIIDY_GINZU\KBWI MIIDY4 RNAV STAR MIIDY GINZU 20251210_1629 EST.pdf
Procedure Name:	MIIDY4
Software: DmeDmePlugin:	7.6.0
Date/Time:	12/10/2025 16:29 EST
Databases:	MITRE 3DEP 3 arcsec

### Failures

No Failures

### Warnings

No Warnings

### Informational

No Informational

### Notes For Flight Check

None

### Flight Plan

Name	Type	Lat/Lon	Altitude (ft)	VNAV Mode	Ground Speed (kts)	Turn Type	Leg Type
MIIDY	WP	N38° 52' 09.4000", W076° 17' 48.4600"	1300	VNAV	250	FLY_BY	TF
KAPTN	WP	N38° 55' 41.7900", W076° 29' 51.7200"	1300	VNAV	230	FLY_BY	TF
TOGAH	WP	N39° 00' 01.2900", W076° 31' 39.4200"	1300	VNAV	210	FLY_BY	TF
BMTRR	WP	N39° 04' 52.2100", W076° 30' 42.5900"	1300	VNAV	200	FLY_BY	TF
GINZU	WP	N39° 04' 37.8000", W076° 26' 52.1800"	1300	VNAV	200	FLY_OVER	TF

### Flyability

Flight Type:	RNAV_STAR
Selected Airport:	KBWI [IFPA]
Climb Gradient:	None assigned
Speeds:	200 Ground Speed to 11000 FT
	240 Ground Speed to 18000 FT
	260 Ground Speed to 24000 FT
	340 Ground Speed above 24000 FT
Descent During a Turn:	Allowed
VNAV Mode:	Flight Plan

**DME DME Assessment Results for MIIDY4 path MIIDY\_GINZU**

<b>DME/DME</b>	
RNP:	RNP 2
Flight Mode:	Manual
Line of Sight (DTED Level 0 Max):	Evaluated
Inertial Drift:	Enabled
Initial Drift:	0.558 NM
INS Drift Rate:	8.0 NM/Hour
Range Mode:	OSV
RNP Edges:	Evaluated
Min DME Range:	3.0 NM
DME Types:	DME, VOR-DME, VORTAC, TACAN
DME Include Angles:	30 to 150
Critical DMEs:	Allowed
DoD Facilities:	Not included
Foreign Facilities:	Not included
High DMEs:	Included
Low DMEs:	Included
Terminal DMEs:	Included
Flight Check DMEs:	Not selected
Higher Altitudes:	Not Evaluated
Near Maximum Altitude:	Not Evaluated
Automatic ESVs:	Enabled
Disabled DMEs:	None

<b>DME/DME (Continued)</b>										
<b>DMEs Used</b>										
#	Name	Lat/Lon	MAGVAR	Range	Type	Source	Critical	Status	Time	Distance
1	DCA	N38° 51' 34.0300", W077° 02' 11.1700"	9.0 W	40	L		NO	Enabled	49.6 %	45.8 %
2	ADW	N38° 48' 25.9900", W076° 51' 58.5200"	10.0 W	40	L		NO	Enabled	77.1 %	75.1 %
3	BAL	N39° 10' 15.8283", W076° 39' 40.5225"	11.0 W	40	L		NO	Enabled	77.1 %	75.1 %
4	OTT	N38° 42' 21.1352", W076° 44' 41.0854"	10.0 W	40	L		NO	Enabled	3.4 %	3.5 %

<b>Flight Check DME Selection</b>						
Distance [NM]	Selected DMEs					Alternate
0.0						
5.6	ADW	BAL				
8.5	ADW	BAL	OTT			
8.9	ADW	BAL				
12.2	ADW	BAL	DCA			
12.4	ADW	BAL	DCA	OTT		
12.9	ADW	BAL	DCA			

<b>Inertial Drift Segments</b>			
#	Start Location	End Location	Length [NM]
1	N38° 52' 09.4000", W076° 17' 48.4600"	N38° 54' 08.1991", W076° 24' 32.3404"	5.6159

<b>Available DMEs by Waypoints</b>			
Waypoint Before	Waypoint After	DME List	Suggested DMEs
MIIDY	KAPTN	ADW, BAL, OTT	
KAPTN	TOGAH	DCA, ADW, BAL, OTT	
TOGAH	BMTRR	DCA, ADW, BAL	
BMTRR	GINZU	DCA, ADW, BAL	

**DME DME Assessment Results for MIIDY4 path MIIDY\_GINZU**

**User Data Files**

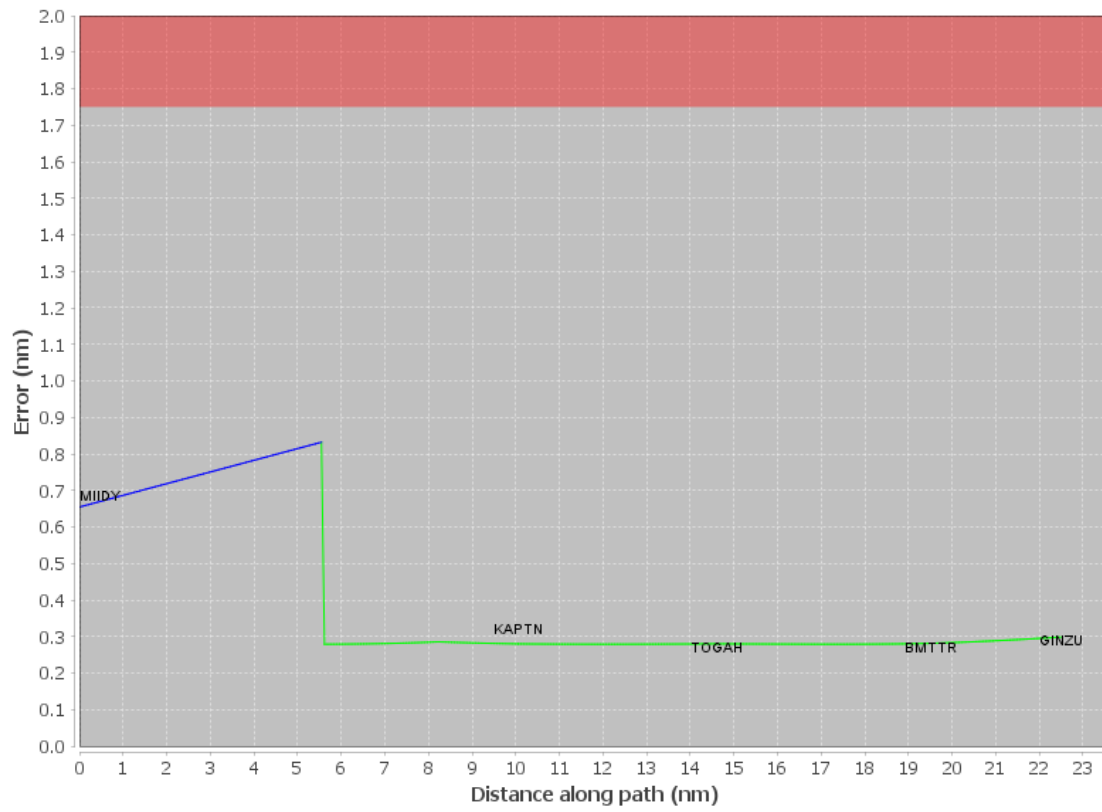
#	File Name
1	New Analysis.udt

**User DMEs**

#	Name	Lat/Lon	MAGVAR	Range	Elevation [ft]	Frequency	Replaces	Status
1	ENO ENO	N39° 13' 53.9281", W075° 30' 57.4918"	9.0 W	40	14.9	111.4	ENO	
	ESV:	Bearing [True]: 216.0° to 234.0° Bearing [Mag]: 225.0° to 243.0°				Arc Distance: Out to 44.0 NM Altitude: 3000.0 to 18100.0 ft		
2	ESV SIE [IFPA] SIE	N39° 05' 43.8324", W074° 48' 01.2382"	9.0 W	130	8.3	114.8	ESV SIE [IFPA]	
	ESV:	Bearing [True]: 234.0° to 257.0° Bearing [Mag]: 243.0° to 266.0°				Arc Distance: Out to 64.0 NM Altitude: 3900.0 to 14600.0 ft		

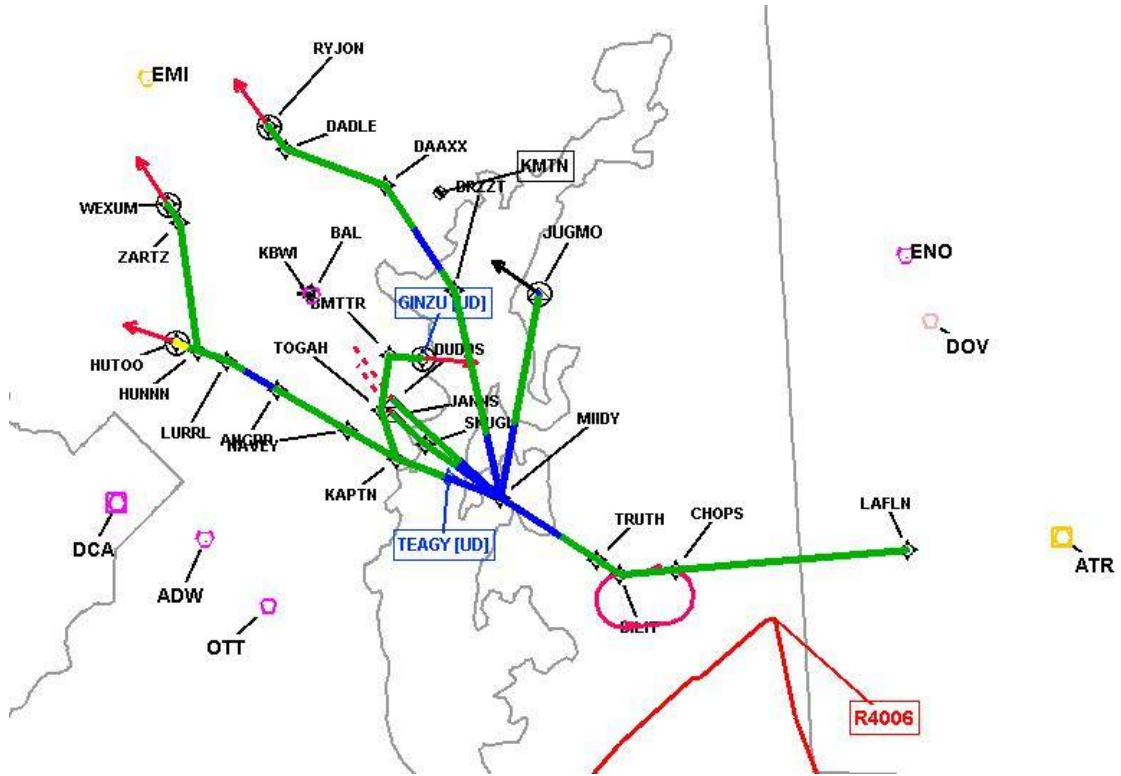
# DME DME Assessment Results for MIIDY4 path MIIDY\_GINZU

## DME Error



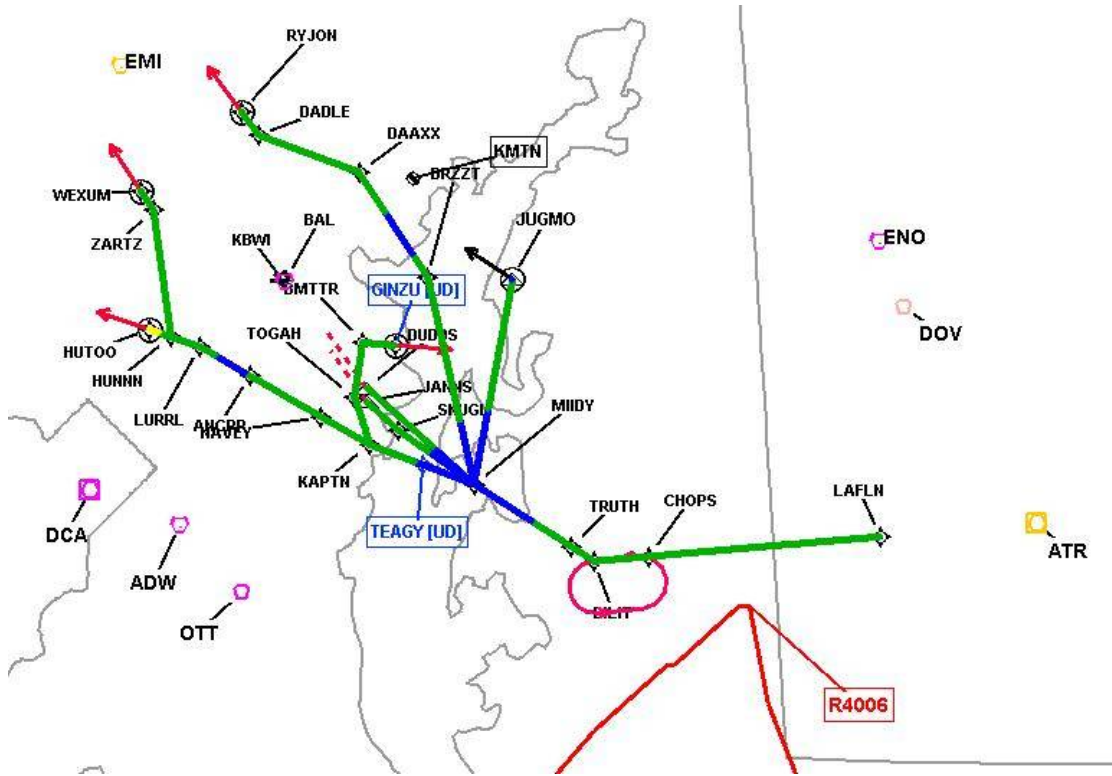
# DME DME Assessment Results for MIIDY4 path MIIDY\_GINZU

Graphic Depiction 1



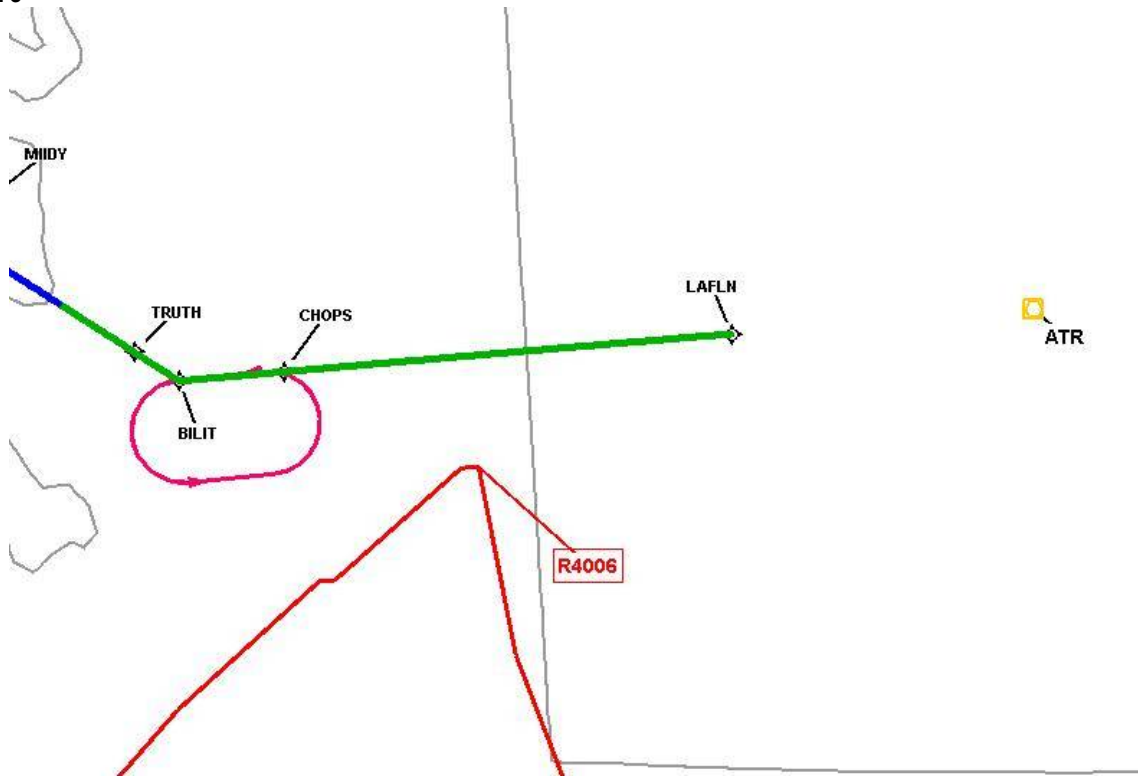
# DME DME Assessment Results for MIIDY4 path MIIDY\_GINZU

Graphic Depiction 2



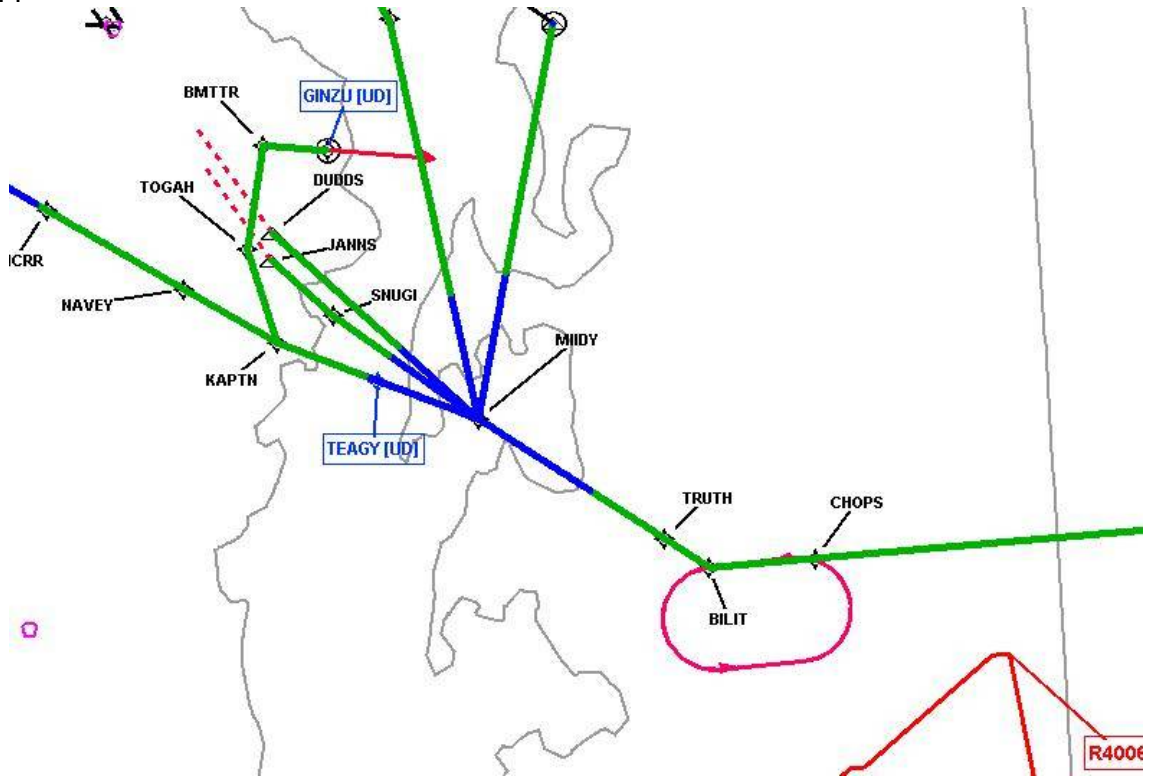
# DME DME Assessment Results for MIIDY4 path MIIDY\_GINZU

Graphic Depiction 3



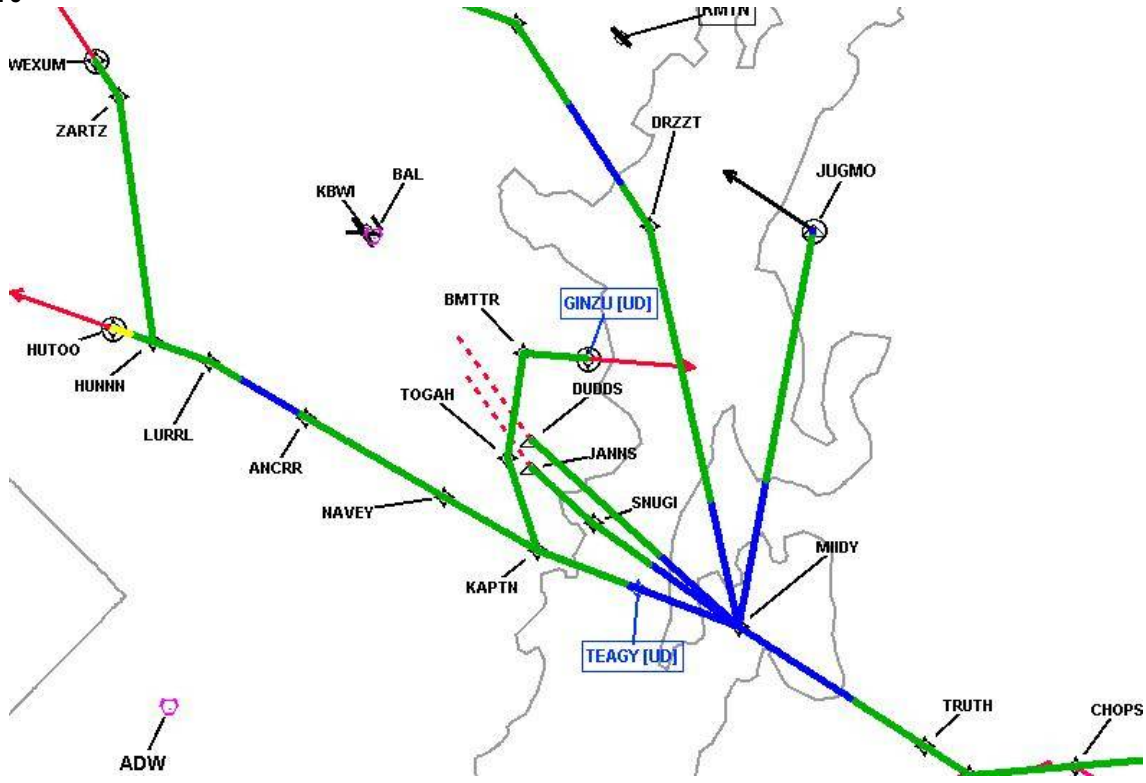
# DME DME Assessment Results for MIIDY4 path MIIDY\_GINZU

Graphic Depiction 4



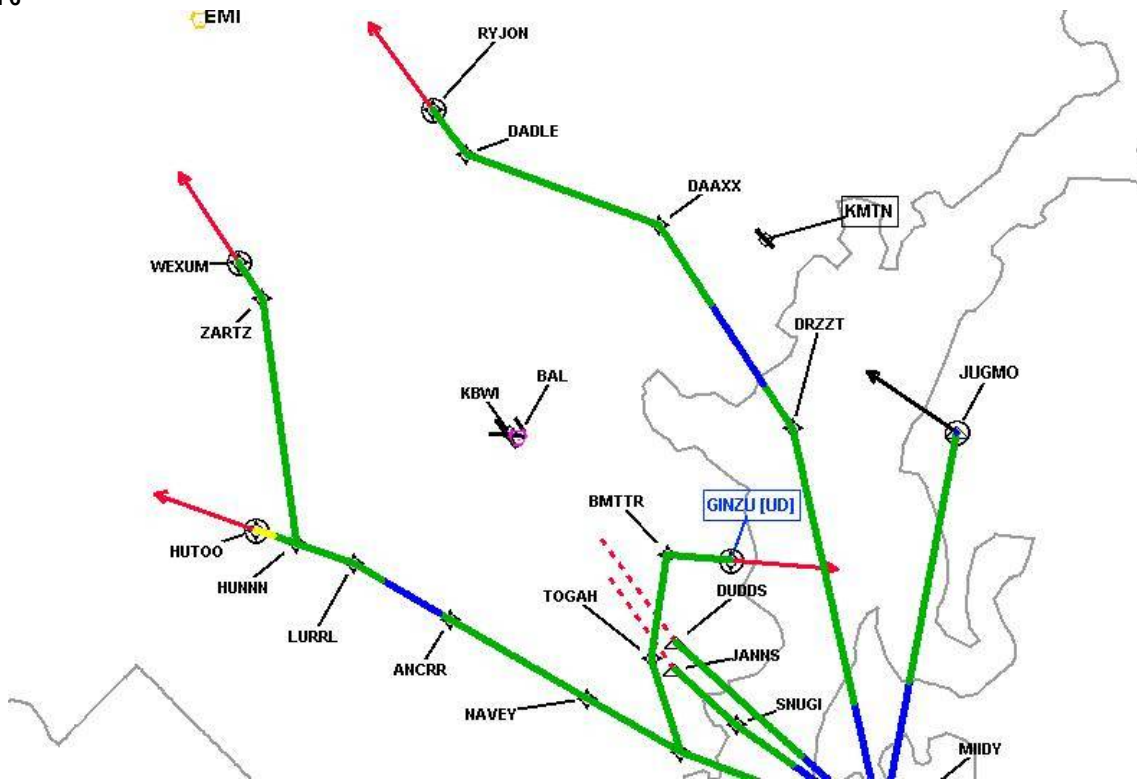
# DME DME Assessment Results for MIIDY4 path MIIDY\_GINZU

Graphic Depiction 5



# DME DME Assessment Results for MIIDY4 path MIIDY\_GINZU

Graphic Depiction 6



## DME DME Assessment Results for MIIDY4 path MIIDY\_JUGMO

### Results Summary

Flyability:	Completed
DME/DME:	Completed - No Critical DMEs
Name:	David C-CTR Cook
Project File:	C:\Users\David C-CTR Cook\Documents\TARGETS WORK\DME-DME WORK\5-14-2026 PUBLICATION\KBWI MIDDY4 STAR\KBWI MIIDY4 (RNAV) STAR DME-DME_20251016.tgs
Output File:	C:\Users\David C-CTR Cook\Documents\TARGETS WORK\DME-DME WORK\5-14-2026 PUBLICATION\KBWI MIDDY4 STAR\KBWI [IFPA] MIIDY4 20251210_1629 EST\MIIDY_JUGMO\KBWI MIIDY4 RNAV STAR MIIDY JUGMO 20251210_1629 EST.pdf
Procedure Name:	MIIDY4
Software: DmeDmePlugin:	7.6.0
Date/Time:	12/10/2025 16:29 EST
Databases:	MITRE 3DEP 3 arcsec

### Failures

No Failures

### Warnings

No Warnings

### Informational

No Informational

### Notes For Flight Check

None

### Flight Plan

Name	Type	Lat/Lon	Altitude (ft)	VNAV Mode	Ground Speed (kts)	Turn Type	Leg Type
MIIDY	WP	N38° 52' 09.4000", W076° 17' 48.4600"	1300	VNAV	250	FLY_BY	TF
JUGMO	WP	N39° 10' 31.7800", W076° 13' 20.0400"	1300	VNAV	200	FLY_OVER	TF

### Flyability

Flight Type:	RNAV_STAR
Selected Airport:	KBWI [IFPA]
Climb Gradient:	None assigned
Speeds:	200 Ground Speed to 11000 FT
	240 Ground Speed to 18000 FT
	260 Ground Speed to 24000 FT
	340 Ground Speed above 24000 FT
Descent During a Turn:	Allowed
VNAV Mode:	Flight Plan

## DME DME Assessment Results for MIIDY4 path MIIDY\_JUGMO

DME/DME	
RNP:	RNP 2
Flight Mode:	Manual
Line of Sight (DTED Level 0 Max):	Evaluated
Inertial Drift:	Enabled
Initial Drift:	0.558 NM
INS Drift Rate:	8.0 NM/Hour
Range Mode:	OSV
RNP Edges:	Evaluated
Min DME Range:	3.0 NM
DME Types:	DME, VOR-DME, VORTAC, TACAN
DME Include Angles:	30 to 150
Critical DMEs:	Allowed
DoD Facilities:	Not included
Foreign Facilities:	Not included
High DMEs:	Included
Low DMEs:	Included
Terminal DMEs:	Included
Flight Check DMEs:	Not selected
Higher Altitudes:	Not Evaluated
Near Maximum Altitude:	Not Evaluated
Automatic ESVs:	Enabled
Disabled DMEs:	None

DME/DME (Continued)										
DMEs Used										
#	Name	Lat/Lon	MAGVAR	Range	Type	Source	Critical	Status	Time	Distance
1	ADW	N38° 48' 25.9900", W076° 51' 58.5200"	10.0 W	40	L		NO	Enabled	62.6 %	62.6 %
2	BAL	N39° 10' 15.8283", W076° 39' 40.5225"	11.0 W	40	L		NO	Enabled	62.6 %	62.6 %

Flight Check DME Selection						
Distance [NM]	Selected DMEs					Alternate
0.0						
6.8	ADW	BAL				
18.5						

Inertial Drift Segments			
#	Start Location	End Location	Length [NM]
1	N38° 52' 09.4000", W076° 17' 48.4600"	N38° 58' 49.5496", W076° 16' 11.3010"	6.7816
2	N39° 10' 23.6151", W076° 13' 22.0368"	N39° 10' 31.7800", W076° 13' 20.0400"	0.1384

Available DMEs by Waypoints			
Waypoint Before	Waypoint After	DME List	Suggested DMEs
MIIDY	JUGMO	ADW, BAL	

**DME DME Assessment Results for MIIDY4 path MIIDY\_JUGMO**

**User Data Files**

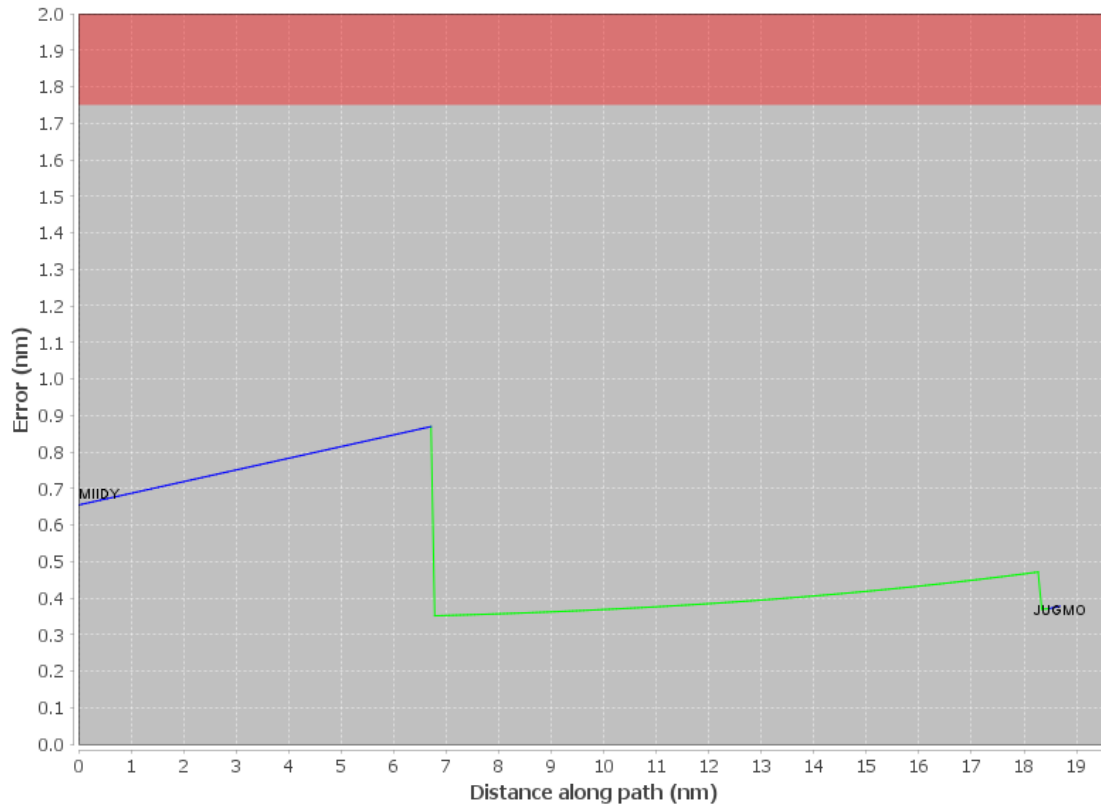
#	File Name
1	New Analysis.udt

**User DMEs**

#	Name	Lat/Lon	MAGVAR	Range	Elevation [ft]	Frequency	Replaces	Status
1	ENO ENO	N39° 13' 53.9281", W075° 30' 57.4918"	9.0 W	40	14.9	111.4	ENO	
	ESV:	Bearing [True]: 216.0° to 234.0° Bearing [Mag]: 225.0° to 243.0°				Arc Distance: Out to 44.0 NM Altitude: 3000.0 to 18100.0 ft		
2	ESV SIE [IFPA] SIE	N39° 05' 43.8324", W074° 48' 01.2382"	9.0 W	130	8.3	114.8	ESV SIE [IFPA]	
	ESV:	Bearing [True]: 234.0° to 257.0° Bearing [Mag]: 243.0° to 266.0°				Arc Distance: Out to 64.0 NM Altitude: 3900.0 to 14600.0 ft		

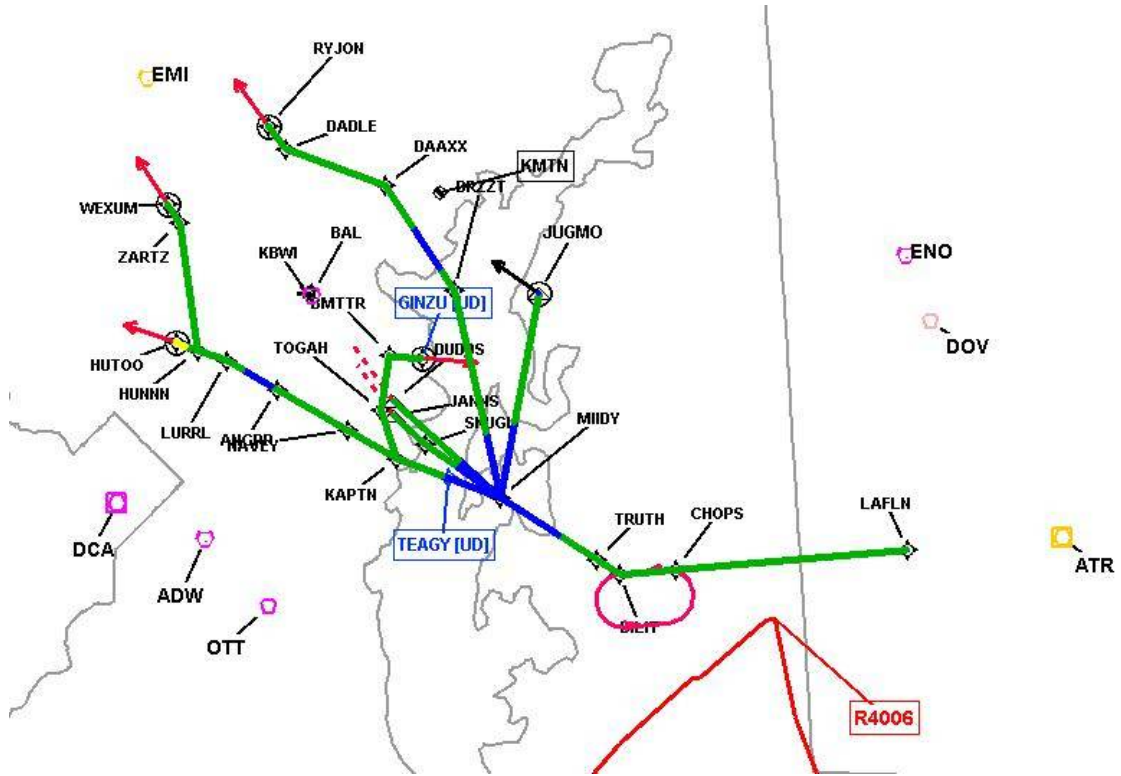
# DME DME Assessment Results for MIIDY4 path MIIDY\_JUGMO

## DME Error



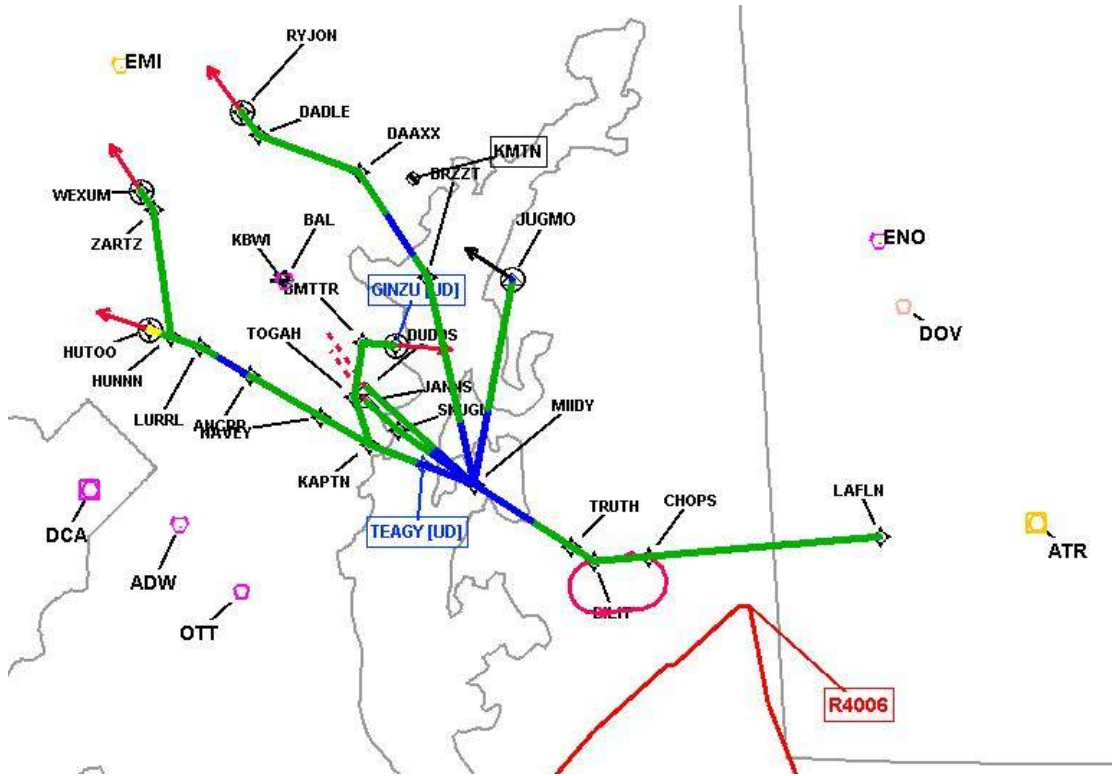
# DME DME Assessment Results for MIIDY4 path MIIDY\_JUGMO

Graphic Depiction 1



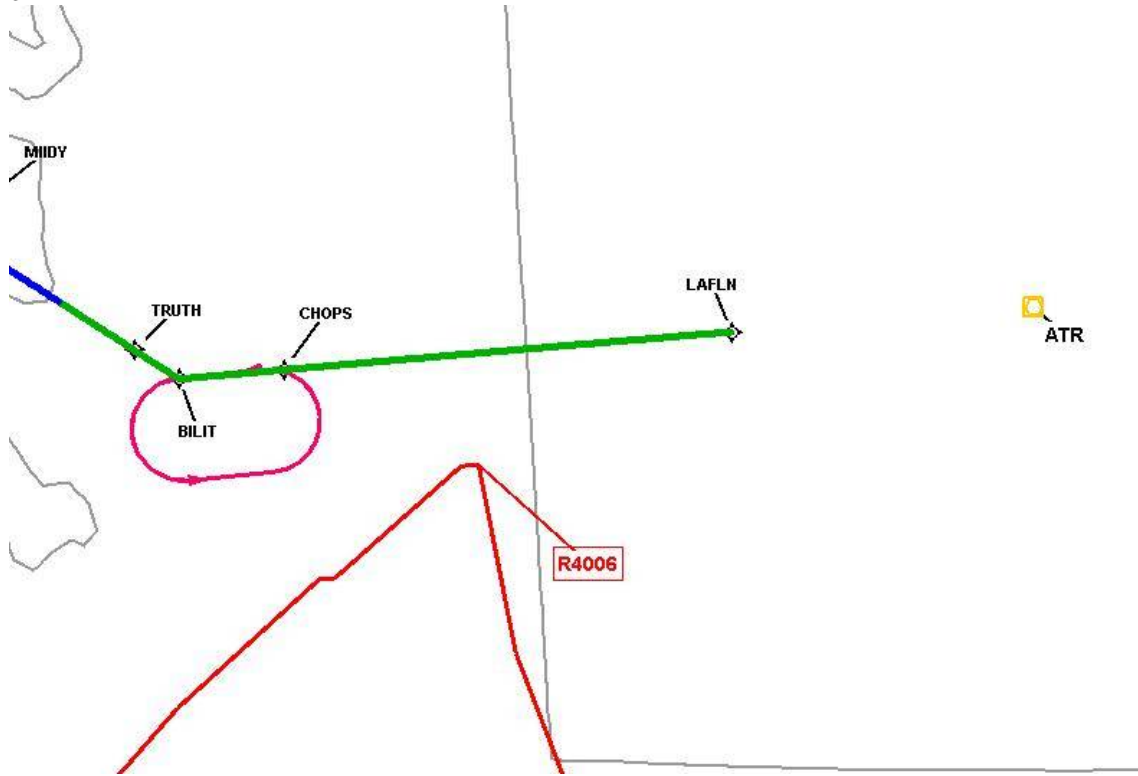
# DME DME Assessment Results for MIIDY4 path MIIDY\_JUGMO

Graphic Depiction 2



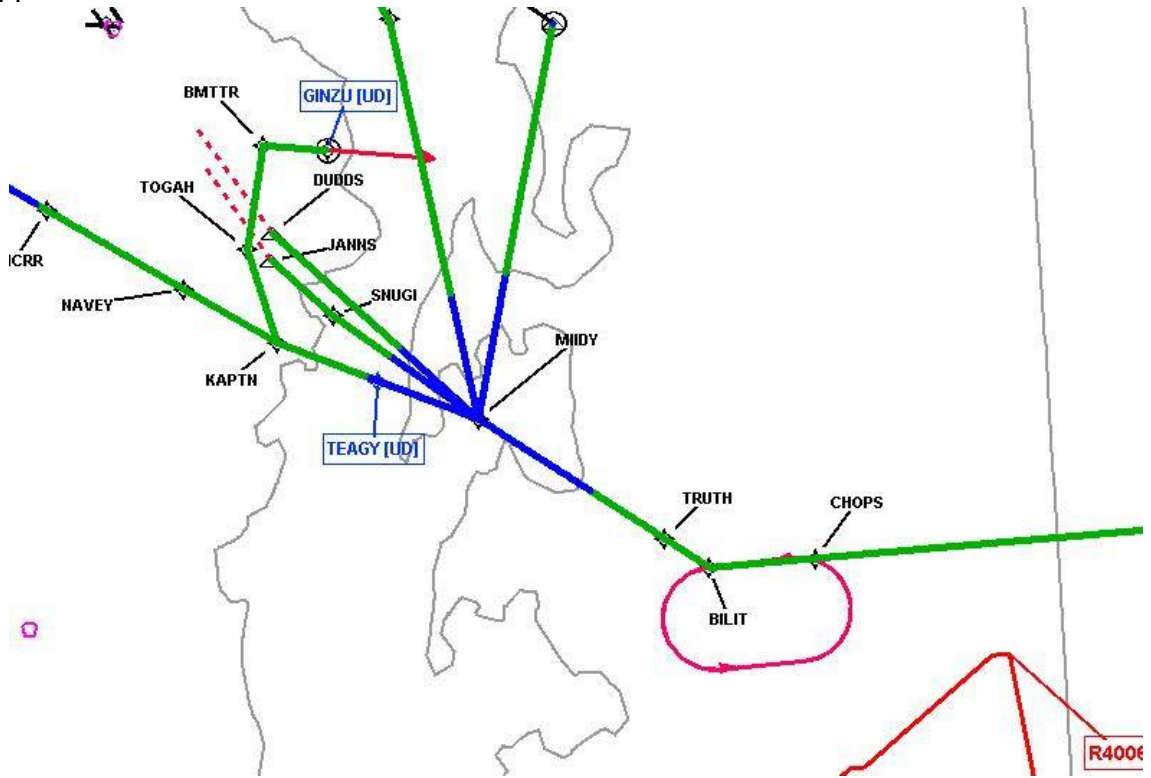
# DME DME Assessment Results for MIIDY4 path MIIDY\_JUGMO

Graphic Depiction 3



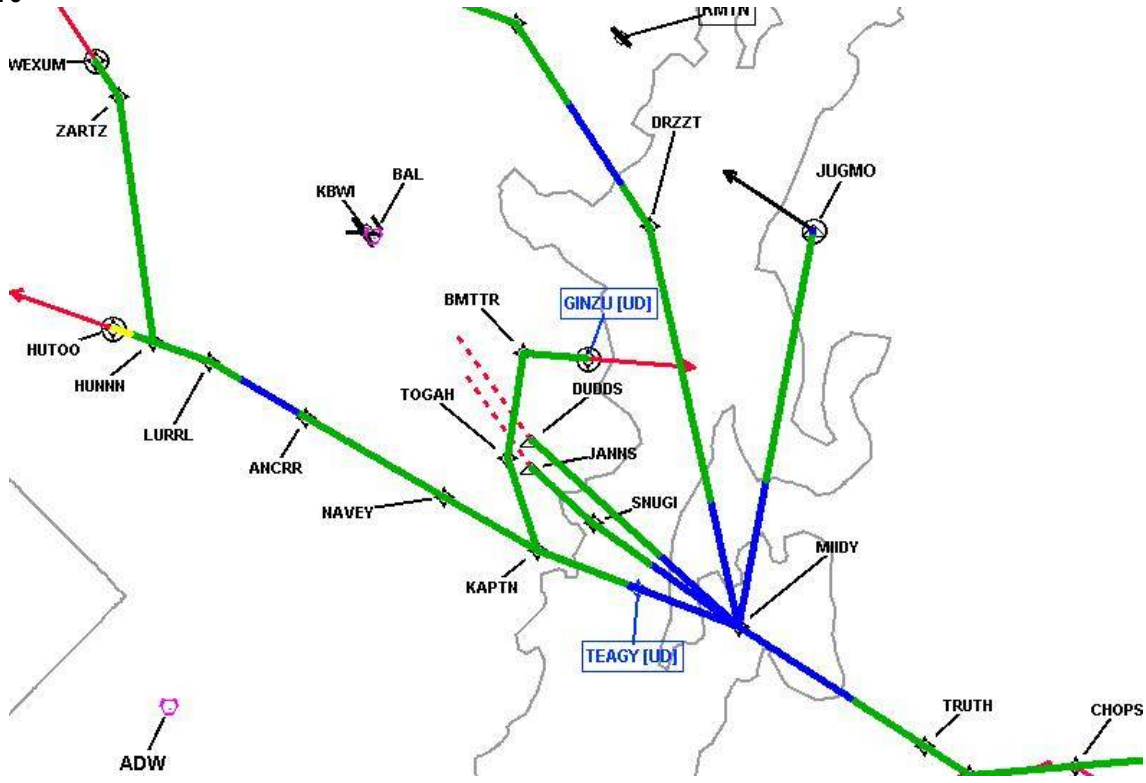
# DME DME Assessment Results for MIIDY4 path MIIDY\_JUGMO

Graphic Depiction 4



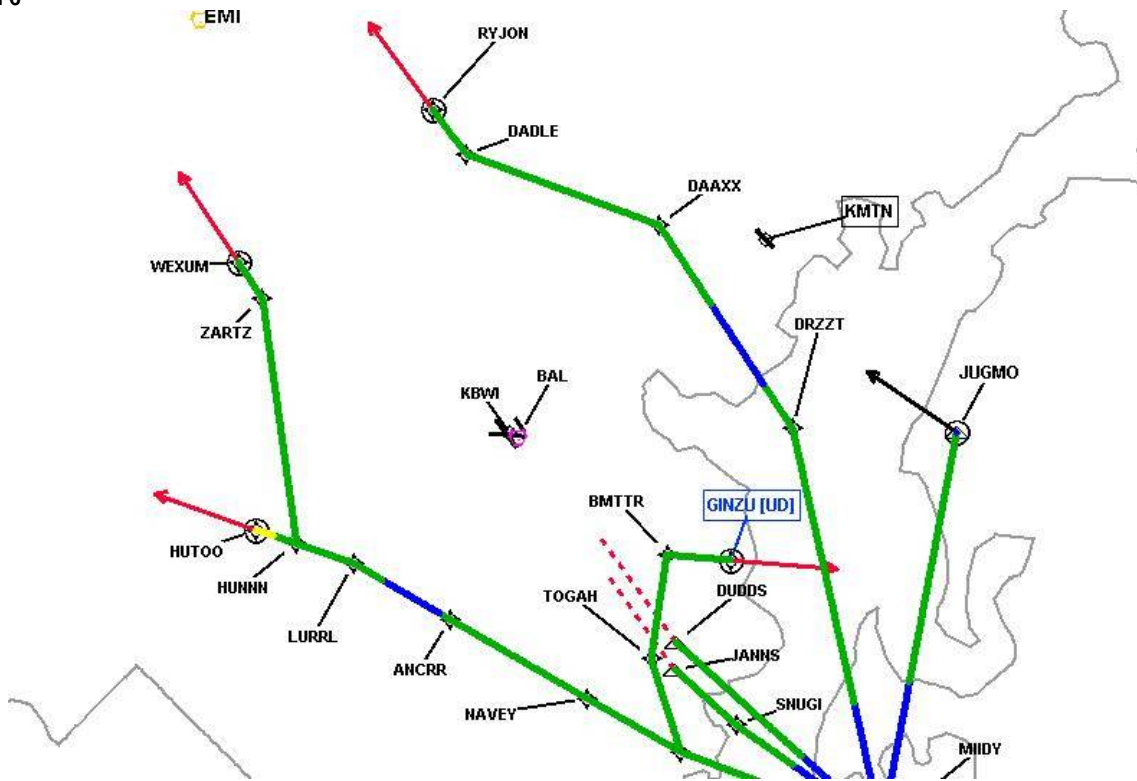
# DME DME Assessment Results for MIIDY4 path MIIDY\_JUGMO

Graphic Depiction 5



DME DME Assessment Results for MIIDY4 path MIIDY\_JUGMO

Graphic Depiction 6



## DME DME Assessment Results for MIIDY4 path MIIDY\_RYJON

### Results Summary

Flyability:	Completed
DME/DME:	Completed - No Critical DMEs
Name:	David C-CTR Cook
Project File:	C:\Users\David C-CTR Cook\Documents\TARGETS WORK\DME-DME WORK\5-14-2026 PUBLICATION\KBWI MIDDY4 STAR\KBWI MIIDY4 (RNAV) STAR DME-DME_20251016.tgs
Output File:	C:\Users\David C-CTR Cook\Documents\TARGETS WORK\DME-DME WORK\5-14-2026 PUBLICATION\KBWI MIDDY4 STAR\KBWI [IFPA] MIIDY4 20251210_1629 EST\MIIDY_RYJON\KBWI MIIDY4 RNAV STAR MIIDY RYJON 20251210_1629 EST.pdf
Procedure Name:	MIIDY4
Software: DmeDmePlugin:	7.6.0
Date/Time:	12/10/2025 16:29 EST
Databases:	MITRE 3DEP 3 arcsec

### Failures

No Failures

### Warnings

No Warnings

### Informational

No Informational

### Notes For Flight Check

None

### Flight Plan

Name	Type	Lat/Lon	Altitude (ft)	VNAV Mode	Ground Speed (kts)	Turn Type	Leg Type
MIIDY	WP	N38° 52' 09.4000", W076° 17' 48.4600"	1300	VNAV	250	FLY_BY	TF
DRZZT	WP	N39° 10' 44.4000", W076° 23' 10.5200"	1300	VNAV	210	FLY_BY	TF
DAAXX	WP	N39° 20' 09.9400", W076° 31' 09.0300"	1300	VNAV	210	FLY_BY	TF
DADLE	WP	N39° 23' 27.8800", W076° 42' 43.5000"	1300	VNAV	210	FLY_BY	TF
RYJON	WP	N39° 25' 31.5700", W076° 44' 43.8100"	1300	VNAV	200	FLY_OVER	TF

### Flyability

Flight Type:	RNAV_STAR
Selected Airport:	KBWI [IFPA]
Climb Gradient:	None assigned
Speeds:	200 Ground Speed to 11000 FT
	240 Ground Speed to 18000 FT
	260 Ground Speed to 24000 FT
	340 Ground Speed above 24000 FT
Descent During a Turn:	Allowed
VNAV Mode:	Flight Plan

## DME DME Assessment Results for MIIDY4 path MIIDY\_RYJON

DME/DME	
RNP:	RNP 2
Flight Mode:	Manual
Line of Sight (DTED Level 0 Max):	Evaluated
Inertial Drift:	Enabled
Initial Drift:	0.558 NM
INS Drift Rate:	8.0 NM/Hour
Range Mode:	OSV
RNP Edges:	Evaluated
Min DME Range:	3.0 NM
DME Types:	DME, VOR-DME, VORTAC, TACAN
DME Include Angles:	30 to 150
Critical DMEs:	Allowed
DoD Facilities:	Not included
Foreign Facilities:	Not included
High DMEs:	Included
Low DMEs:	Included
Terminal DMEs:	Included
Flight Check DMEs:	Not selected
Higher Altitudes:	Not Evaluated
Near Maximum Altitude:	Not Evaluated
Automatic ESVs:	Enabled
Disabled DMEs:	None

DME/DME (Continued)										
DMEs Used										
#	Name	Lat/Lon	MAGVAR	Range	Type	Source	Critical	Status	Time	Distance
1	EMI	N39° 29' 42.0266", W076° 58' 42.8591"	8.0 W	130	H		NO	Enabled	40.1 %	37.2 %
2	DCA	N38° 51' 34.0300", W077° 02' 11.1700"	9.0 W	40	L		NO	Enabled	6.6 %	7.3 %
3	ADW	N38° 48' 25.9900", W076° 51' 58.5200"	10.0 W	40	L		NO	Enabled	58.6 %	59.3 %
4	BAL	N39° 10' 15.8283", W076° 39' 40.5225"	11.0 W	40	L		NO	Enabled	76 %	75.4 %
5	ESL	N39° 13' 31.7740", W078° 59' 22.2000"	6.0 W	130	DL		NO	Enabled	27.1 %	25.1 %

Flight Check DME Selection						
Distance [NM]	Selected DMEs					Alternate
0.0						
5.9	ADW	BAL				
13.6	ADW	BAL	DCA			
16.8	ADW	BAL				
21.4						
25.8	EMI	BAL				
29.4	EMI	BAL	ESL			
30.4	EMI	BAL				
31.9	ADW	EMI	BAL			
32.6	ADW	EMI	BAL	ESL		
41.7	ESL	BAL				

Inertial Drift Segments			
#	Start Location	End Location	Length [NM]
1	N38° 52' 09.4000", W076° 17' 48.4600"	N38° 57' 54.0690", W076° 19' 27.7061"	5.8824
2	N39° 12' 41.0521", W076° 24' 49.0072"	N39° 16' 25.5403", W076° 27' 58.8502"	4.4739

**DME DME Assessment Results for MIIDY4 path MIIDY\_RYJON**

**Available DMEs by Waypoints**

Waypoint Before	Waypoint After	DME List	Suggested DMEs
MIIDY	DRZZT	DCA, ADW, BAL	
DRZZT	DAAXX	EMI, ADW, BAL, ESL	
DAAXX	DADLE	EMI, ADW, BAL, ESL	
DADLE	RYJON	EMI, ADW, BAL, ESL	

**User Data Files**

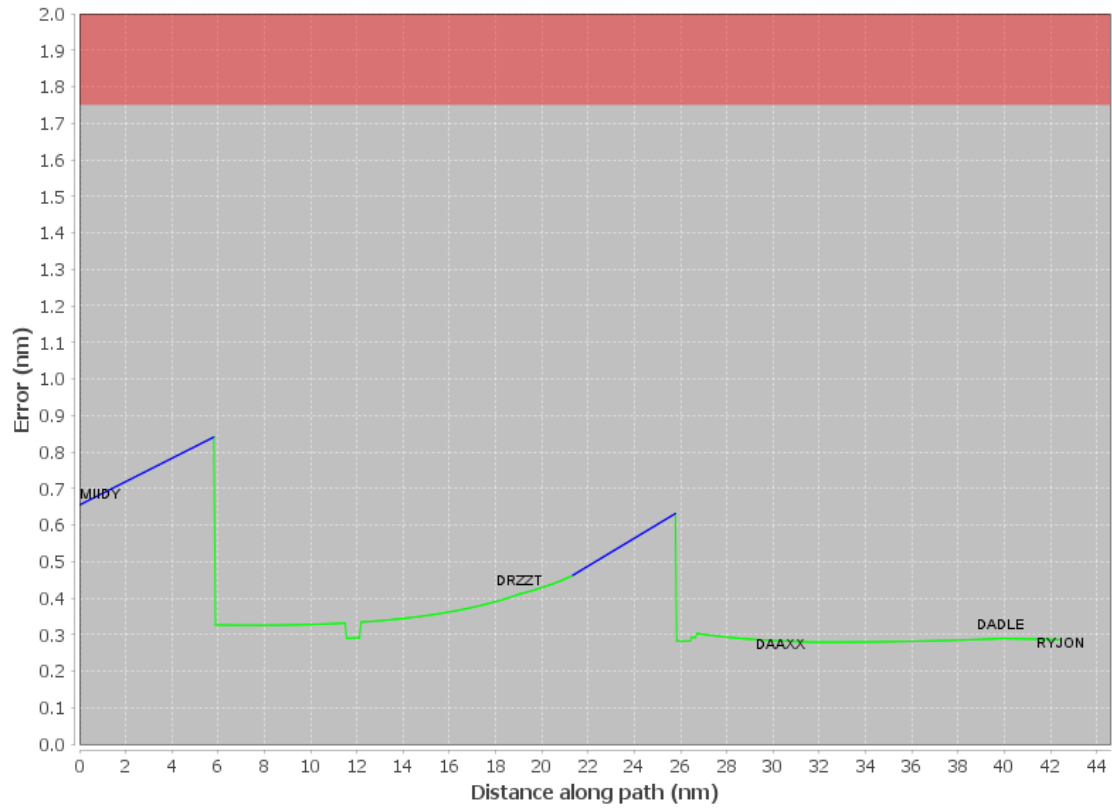
#	File Name
1	New Analysis.udt

**User DMEs**

#	Name	Lat/Lon	MAGVAR	Range	Elevation [ft]	Frequency	Replaces	Status
1	ENO ENO	N39° 13' 53.9281", W075° 30' 57.4918"	9.0 W	40	14.9	111.4	ENO	
	ESV:	Bearing [True]: 216.0° to 234.0° Bearing [Mag]: 225.0° to 243.0°				Arc Distance: Out to 44.0 NM Altitude: 3000.0 to 18100.0 ft		
2	ESV SIE [IFPA] SIE	N39° 05' 43.8324", W074° 48' 01.2382"	9.0 W	130	8.3	114.8	ESV SIE [IFPA]	
	ESV:	Bearing [True]: 234.0° to 257.0° Bearing [Mag]: 243.0° to 266.0°				Arc Distance: Out to 64.0 NM Altitude: 3900.0 to 14600.0 ft		

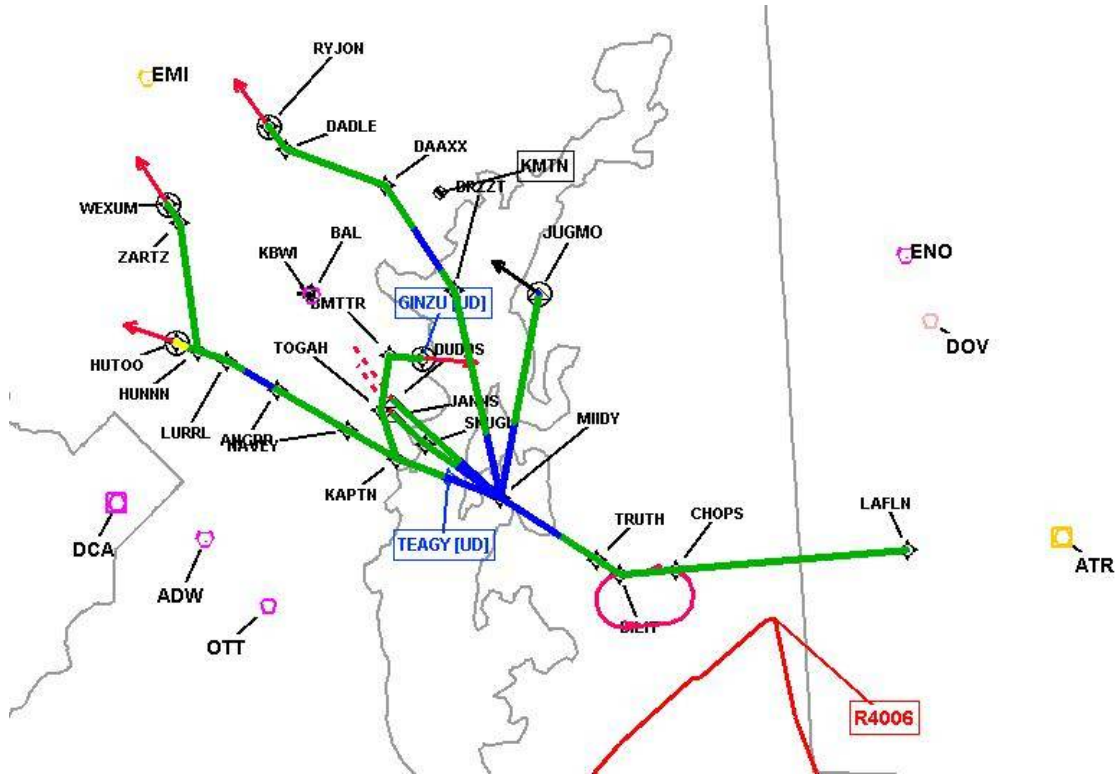
# DME DME Assessment Results for MIIDY4 path MIIDY\_RYJON

## DME Error



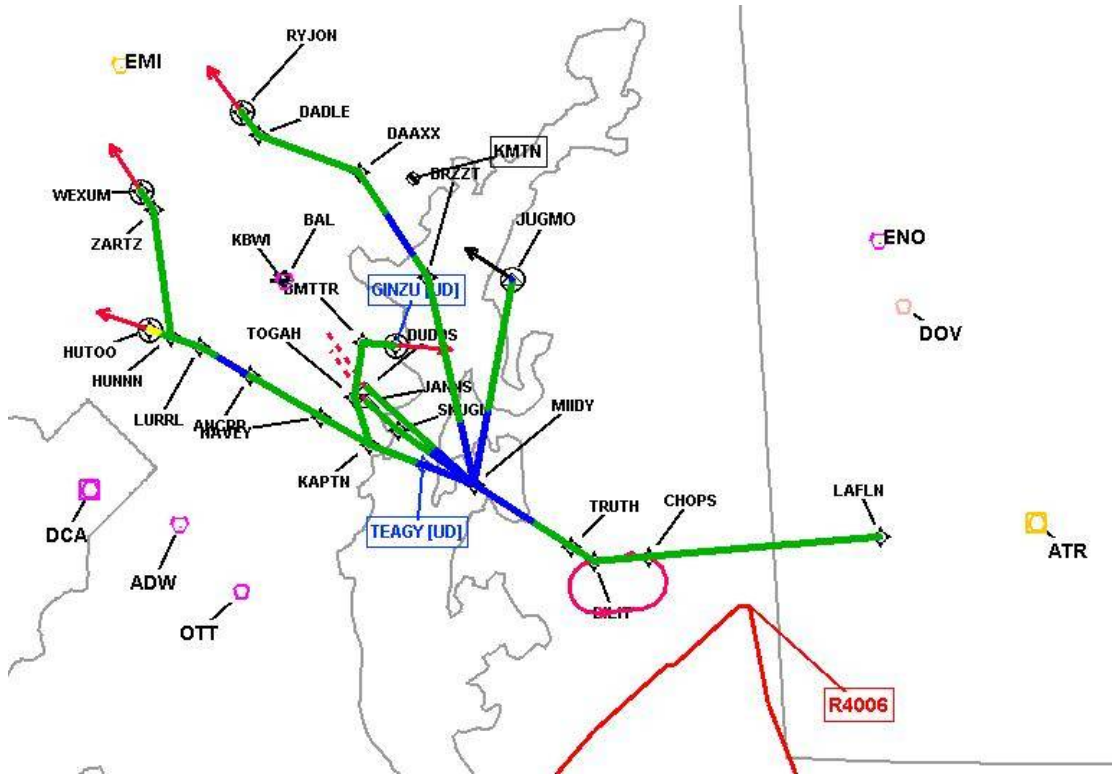
# DME DME Assessment Results for MIIDY4 path MIIDY\_RYJON

Graphic Depiction 1



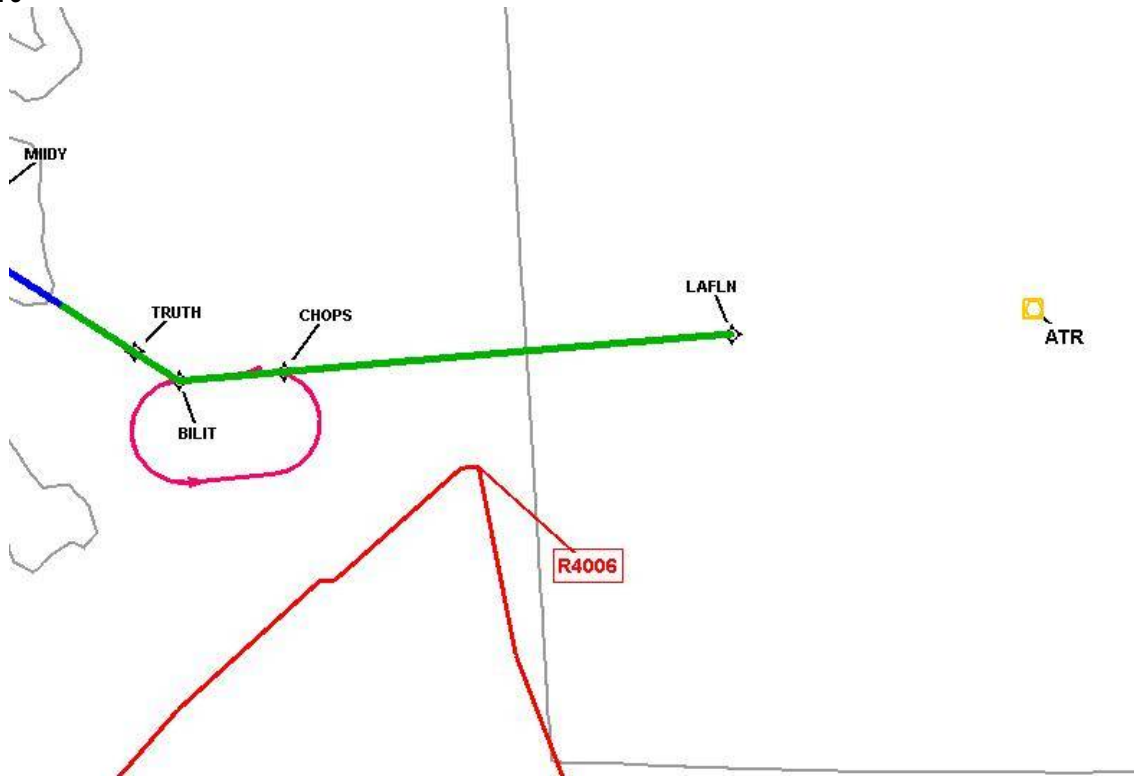
# DME DME Assessment Results for MIIDY4 path MIIDY\_RYJON

Graphic Depiction 2



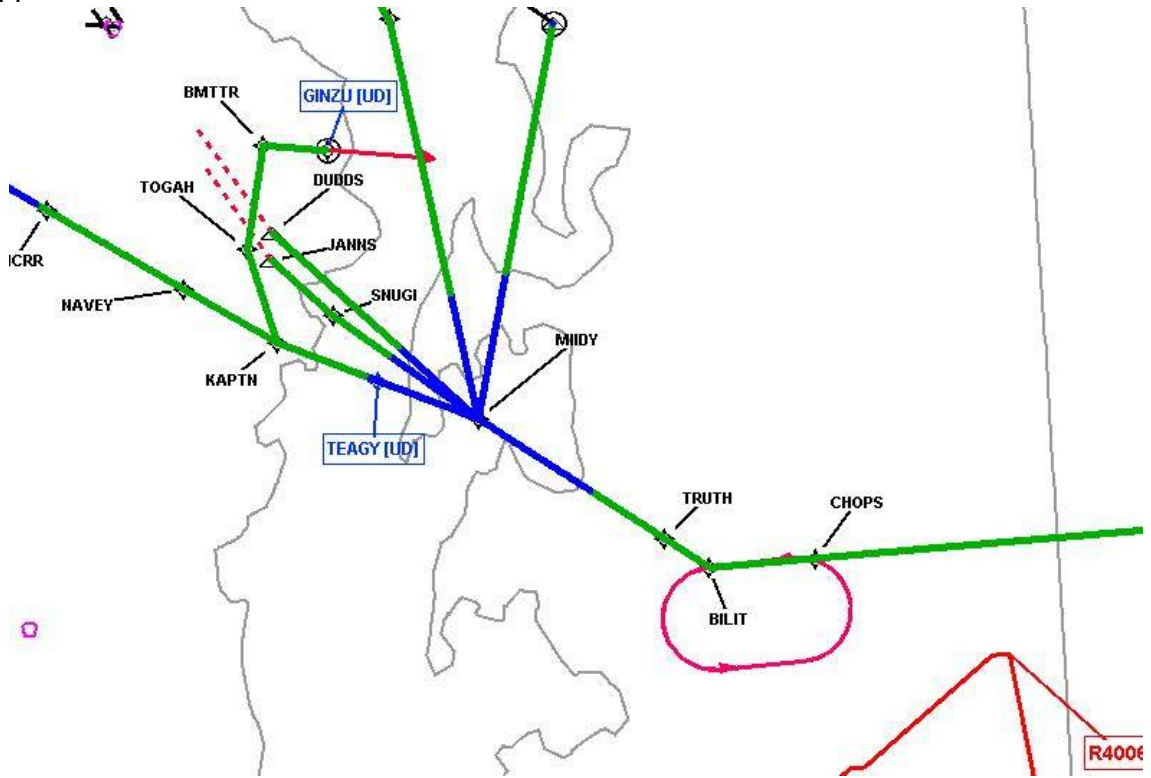
# DME DME Assessment Results for MIIDY4 path MIIDY\_RYJON

Graphic Depiction 3



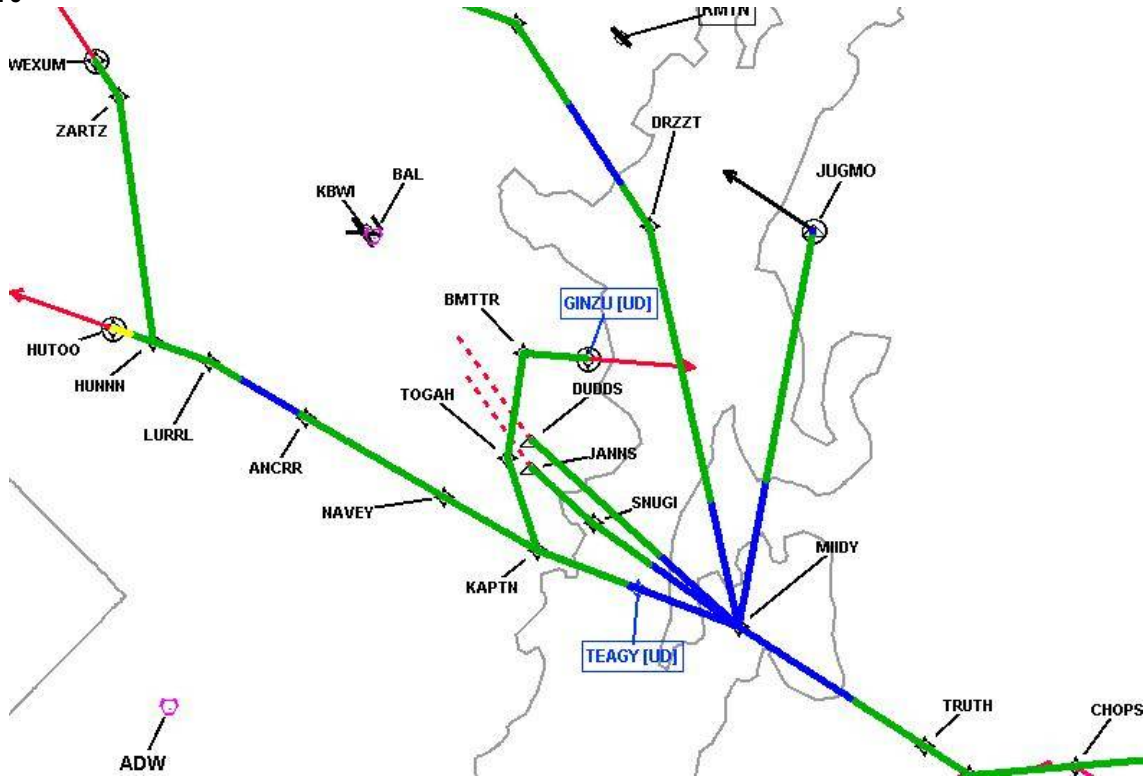
# DME DME Assessment Results for MIIDY4 path MIIDY\_RYJON

Graphic Depiction 4



# DME DME Assessment Results for MIIDY4 path MIIDY\_RYJON

Graphic Depiction 5



# DME DME Assessment Results for MIIDY4 path MIIDY\_RYJON

Graphic Depiction 6

