

Flight Procedures Cover Page	Task Action: P-NOTAM	Task Type: IAP	Estimated Chart Date: 10/08/2020	APWS Task ID: B9D49F7854FD42AABC99E593D8D58F55	APWS Project ID: 904534D691B04A04B5F6D2A10DC870E1
Procedure: VOR/DME RWY 18 AMDT 1A		Enroute: NO	Specialist: Dougherty, Steven		Agreement Number:
Airport ID: KXBP	Airport Name: BRIDGEPORT MUNI		Airport City: BRIDGEPORT		State: TX
Facility ID: UKW	Facility Type: VORTAC	Flight Inspection Remark Type:			
<div>Procedure Comments:</div> <div>PROCESSED IAW AIRCRAFT OPERATIONS GROUP (AJF-10) MEMO, APRIL 29, 2020, SUBJECT: FLIGHT INSPECTION REVIEW NOT REQUIRED.</div> <div>P-NOTAM.</div> <div>CIRCLING ICON.</div> <div>ACTIVE DATA USED.</div> <div>CONTACT DAVID DANNER, AJV-A421, 405-954-5077.</div> <div><div>QUALITY 30 CHECKED</div><div>7/21 BBLUE</div><div>QUALITY 41 CHECKED</div></div>					

OLD

BRIDGEPORT, TEXAS

AL-5825 (FAA)

18144

VORTAC UKW <b>117.15</b> Chan <b>118</b> (Y)	APP CRS <b>175°</b>	Rwy Idg TDZE <b>841</b> Apt Elev <b>852</b>
--	------------------------	---

## VOR/DME RWY 18

BRIDGEPORT MUNI (XBP)

▼ Visibility reduction by helicopters NA. When local altimeter setting not received, use Decatur altimeter setting and increase all MDA 60 feet.

MISSED APPROACH: Climbing right turn to 2800 via UKW VORTAC R-175 to SKYLA/UKW 16 DME and hold.

AWOS-3  
**119.225**

FORT WORTH CENTER  
**127.0 360.6**

UNICOM  
**123.0** (CTAF)

Procedure NA for arrival on UKW VORTAC airway radials 184 CW 233.

3000 NoPT  
175° (6)

(IF)  
CINEN  
UKW 16

IAF  
BOWIE  
117.15 UKW  
Chan 118 (Y)

3000

Λ 2859

2500  
175°  
(10)

R-175

355°  
1 min

175°

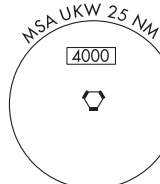
(IF)  
SKYLA  
UKW 16

Λ 1280

Λ 1255

Λ 1082

Λ 1046±



Λ 2547

2800

UKW R-175

SKYLA  
UKW 16

One Minute  
Holding Pattern

SKYLA  
UKW 16

355°

175°

2800

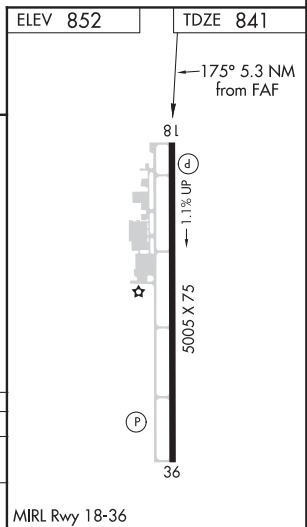
2500

UKW  
21.3

175°  
2.95°  
TCH 40

5.3 NM

CATEGORY	A	B	C	D
S-18	1440-1 599 (600-1)	1440-1¼ 599 (600-1¼)	NA	
CIRCLING	1480-1 628 (700-1)	1480-1¼ 628 (700-1¼)	NA	



MIRL Rwy 18-36

SC-2, 30 JAN 2020 to 27 FEB 2020

SC-2, 30 JAN 2020 to 27 FEB 2020

BRIDGEPORT, TEXAS  
Amdt 1 11FEB10

33°10'N - 97°50'W

BRIDGEPORT MUNI (XBP)  
VOR/DME RWY 18

CIRCLING CATS A/B  
VOR/DME RWY 18

