



Flight Procedures Cover Page	Task Action: P-NOTAM	Task Type: IAP	Estimated Chart Date: 03/19/2026	APWS Task ID: BB4E7B0EBA32452D8D14AB185BD6877B	APWS Project ID: 77F56FCF97884CEAA55C839D5D385040
Procedure: RNAV (GPS) RWY 5 AMDT 1E		Enroute: NO	Specialist: Smith, Rodney		Agreement Number:
Airport ID: KIPJ			Airport City: LINCOLNTON		State: NC
Facility ID:	Facility Type:	Flight Inspection Remark Type:			
<p>Procedure Comments: ACTIVE DATA USED.</p> <p>ISSUED P-NOTAM FOR CIRCLING MDA CAT C/D 1660/HAA 782.</p> <p>CLEAR T-NOTAM # 5/9429</p> <p>PROCESSED IAW TECHNICAL SUPPORT GROUP (AJF-17) MEMO DATED 07/07/2021, SUBJECT: GUIDANCE FOR PROCEDURAL CHANGES REQUIRING FLIGHT INSPECTION/VALIDATION</p> <p>POC: KYLE THOMPSON, AJV-A330 MANAGER, 405-954-2135</p>					
				 	

WAAS CH 78408 W05A	APP CRS 053°	Rwy Ldg TDZE Apt Elev	5500 878 878
----------------------------------------	------------------------	-----------------------------	-----------------------------------------

OLD

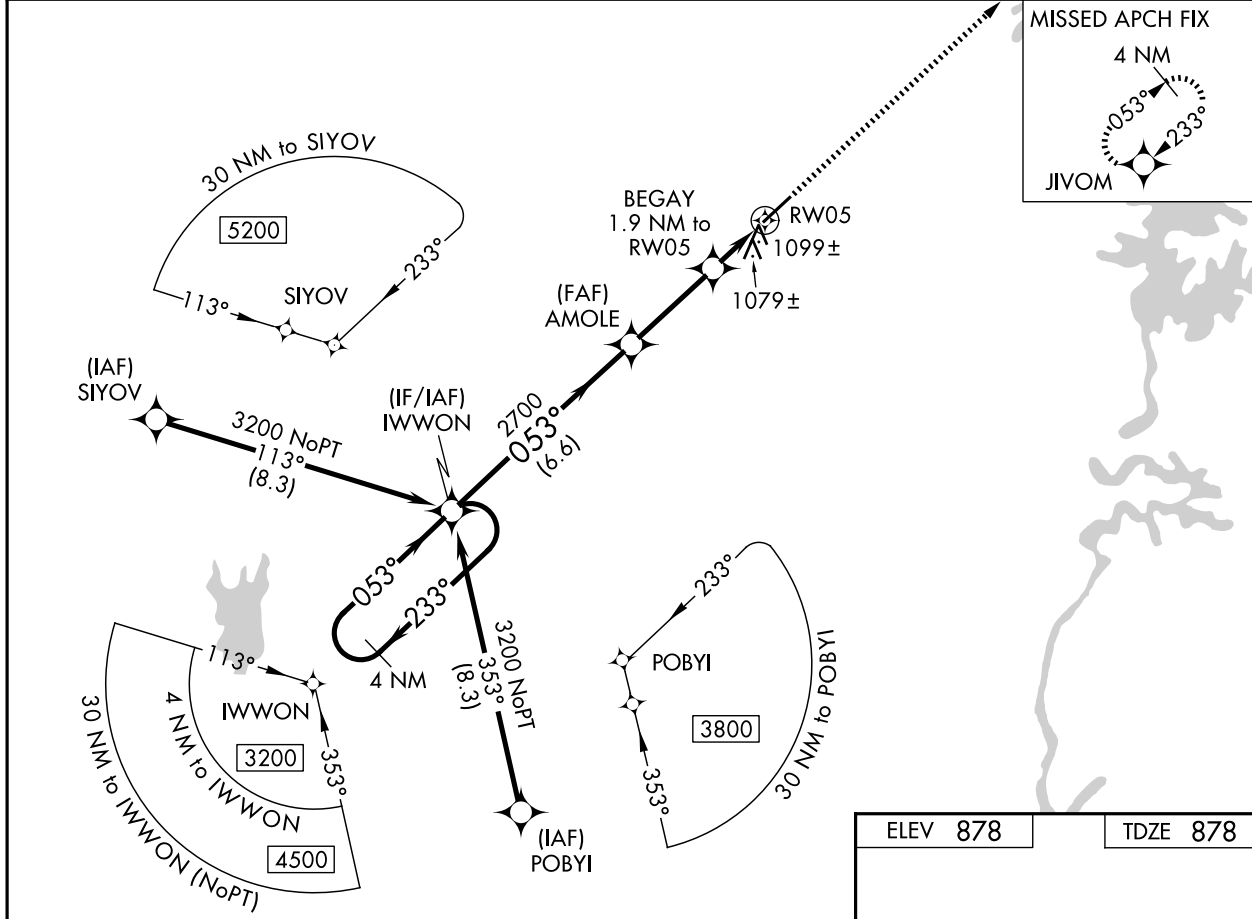
RNAV (GPS) RWY 5
LINCOLN-LINCOLN COUNTY RGNL (IPJ)

RNP APCH.

▼ When local altimeter setting not received, use Charlotte altimeter setting: increase LPV DA to 1395 feet, LNAV/VNAV DA to 1463 feet and visibility LNAV/VNAV ¼ SM; increase all MDAs 80 feet and visibility Cats C and D ¼ SM. Rwy 5 helicopter visibility reduction below ¾ SM NA. Baro-VNAV and VDP NA when using Charlotte altimeter setting. For uncompensated Baro-VNAV systems, LNAV/VNAV NA below -16°C or above 47°C.

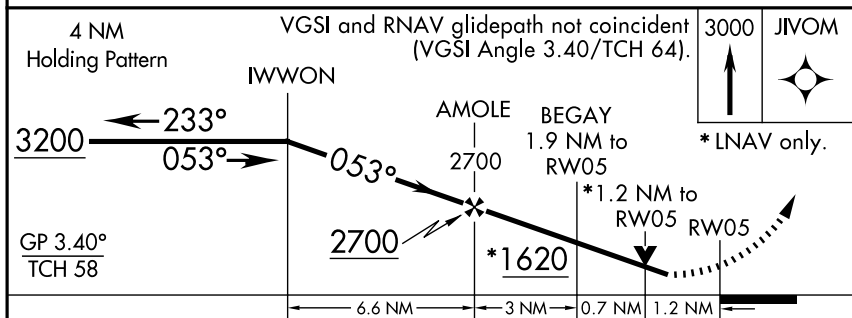
▲ MISSED APPROACH: Climb to 3000 direct JIVOM and hold.

AWOS-3 119.675	CHARLOTTE APP CON 134.75 257.2	CLNC DEL (GCO) 124.9	UNICOM 123.05 (CTAF)
--------------------------	------------------------------------------	--------------------------------	--------------------------------

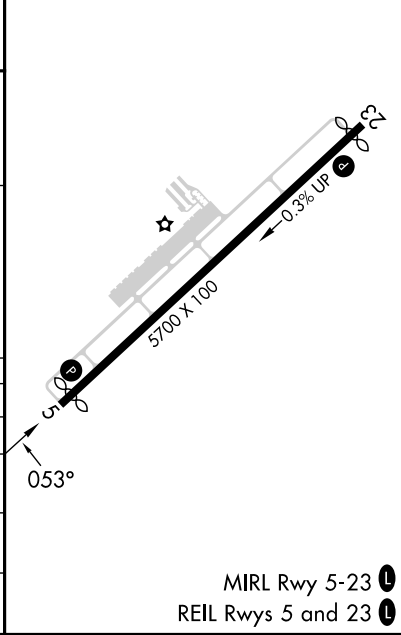


SE-2, 02 OCT 2025 to 30 OCT 2025

SE-2, 02 OCT 2025 to 30 OCT 2025



ELEV 878	TDZE 878
----------	----------



CATEGORY	A	B	C	D
LPV DA	1332-1 ³ / ₈	454 (500-1 ³ / ₈)		NA
LNAV/VNAV DA	1400-1 ¹ / ₂	522 (600-1 ¹ / ₂)		NA
LNAV MDA	1360-1	482 (500-1)	1360-1 ³ / ₈	482 (500-1 ³ / ₈)
CIRCLING	1400-1 522 (600-1)	1440-1 562 (600-1)	1640-2 ¹ / ₄ 762 (800-2 ¹ / ₄)	1640-2 ¹ / ₂ 762 (800-2 ¹ / ₂)

MIRA Rwy 5-23
REIL Rws 5 and 23