

WAAS CH <b>90228</b> <b>W09A</b>	APP CRS <b>095°</b>	Rwy Ldg TDZE Apt Elev <b>5004</b> <b>754</b> <b>754</b>
--	------------------------	--

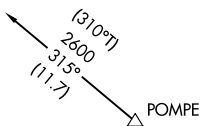
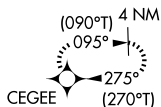
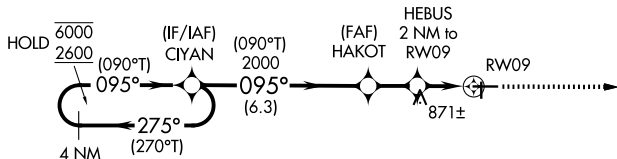
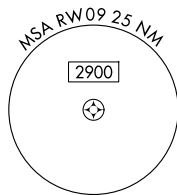
# RNAV (GPS) RWY 9

GRATIOT COMMUNITY (AMN)

RNP APCH - GPS.	<p><b>⚠</b> Rwy 9 helicopter visibility reduction below 3/4 SM NA. For uncompensated Baro-VNAV systems, LNAV/VNAV NA below -16°C or above 54°C. Baro-VNAV and VDP NA when using MOP altimeter setting. When local altimeter setting not received, use MOP altimeter setting: increase LVP DA to 1071 feet; increase LNAV/VNAV DA to 1199 feet and all visibilities 1/4 SM; increase all MDAs 60 feet and LNAV visibility Cat C and D 1/4 SM.</p>
MISSED APPROACH: Climb to 2600 direct CEGEE and hold.	

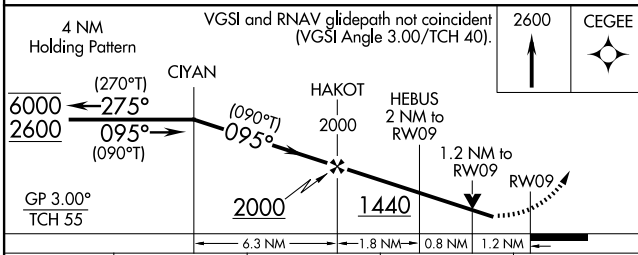
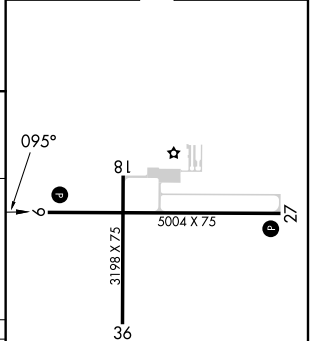
AWOS-3P <b>124.175</b>	GREAT LAKES APP CON* <b>126.45 235.625</b>	UNICOM <b>122.8 (CTAF) 0</b>
---------------------------	---	---------------------------------

**PROTOTYPE-NOT FOR NAVIGATION**



Procedure NA for arrivals at POMPE on V274 northeast bound.

ELEV 754	TDZE 754
----------	----------



CATEGORY	A	B	C	D
LPV DA	1029-1 275 (300-1)			
LNAV/VNAV DA	1157-1 1/8 403 (500-1 1/8)			
LNAV MDA	1160-1 406 (500-1)		1160-1 1/8 406 (500-1 1/8)	

REIL Rwy 9 and 27 0  
MIRL Rwy 9-27 and 18-36 0