

| | | | | | |
|--|-------------------------|--------------------------------|-------------------------------------|---|--|
| Flight Procedures Cover Page | Task Action: P-NOTAM | Task Type: IAP | Estimated Chart Date: 07/09/2026 | APWS Task ID: BC780E1119FC4167A01636FF54AE945A | APWS Project ID: 4405ED5CE95E41E89414B78F255D3214 |
| Procedure: RNAV (GPS) RWY 8 AMDT 1A | | Enroute: NO | Specialist: Johnson, Timothy | | Agreement Number: |
| Airport ID: KCLR | | | Airport City: CALIPATRIA | | State: CA |
| Facility ID: | Facility Type: | Flight Inspection Remark Type: | | | |

Procedure Comments:

Visibility Initiative (Garmin) - Update IAP visibility minimums IAW Order 8260.3, Chapter 3, Section 3-3. Visibility Minimums.

PROCESSED IAW TECHNICAL SUPPORT GROUP (AJF-17) MEMO DATED 07/07/2021, SUBJECT: GUIDANCE FOR PROCEDURAL CHANGES REQUIRING FLIGHT INSPECTION/VALIDATION.

CONTACT: CASEY HILL (405) 954-0624.



OLD

CALIPATRIA, CALIFORNIA

AL-9486 (FAA)

26022

| | | |
|------------------------|-----------------------------|---|
| APP CRS 078° | Rwy Ldg TDZE Apt Elev | 3303 -182 -182 |
|------------------------|-----------------------------|---|

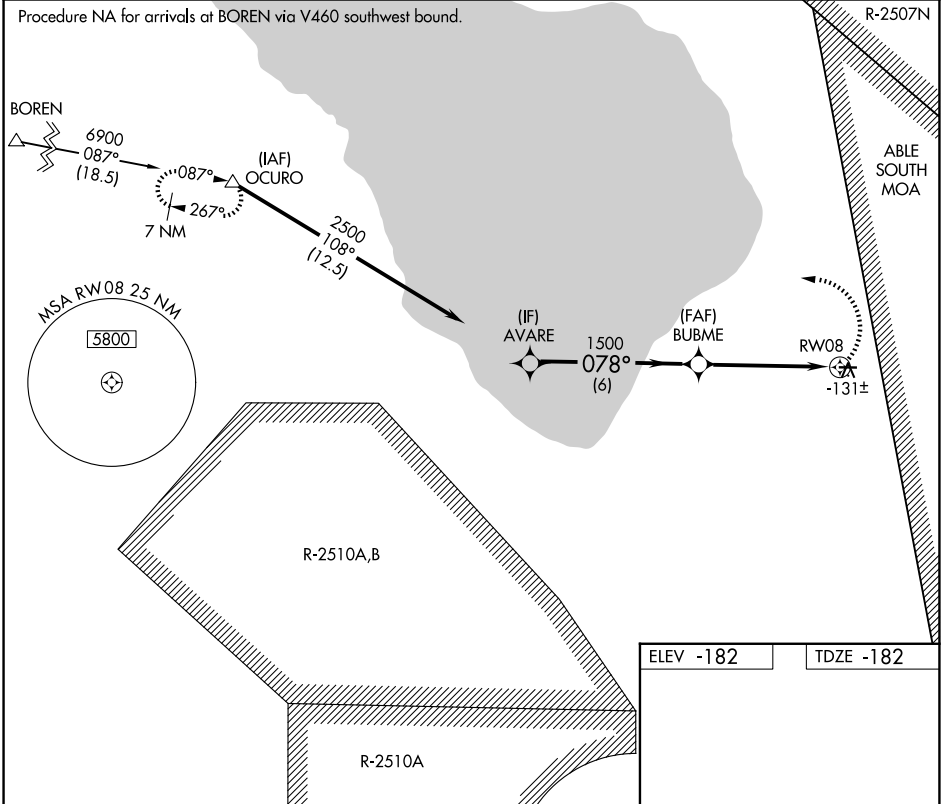
RNAV (GPS) RWY 8

CLIFF HATFIELD MEML (CLR)

NA DME/DME RNP-0.3 NA. Procedure NA at night.
 Visibility reduction by helicopters NA.
 Use Imperial altimeter setting, when not received, procedure NA.

MISSED APPROACH: Climbing left turn to 7300 direct OCURO and hold, continue climb-in-hold to 7300.

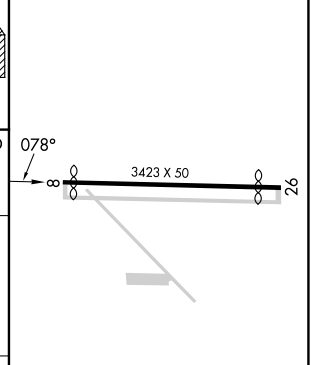
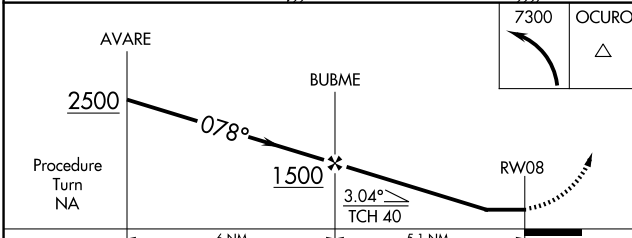
| | | |
|----------------------------|------------------------------------|----------------------|
| IPL ASOS 132.175 | YUMA CERAP 132.275 292.2 | CTAF 122.9 |
|----------------------------|------------------------------------|----------------------|



SW-3, 19 FEB 2026 to 19 MAR 2026

SW-3, 19 FEB 2026 to 19 MAR 2026

| | |
|-----------|-----------|
| ELEV -182 | TDZE -182 |
|-----------|-----------|



| CATEGORY | A | B | C | D |
|----------|-------|-------------|------------------------|----|
| RNAV MDA | 300-1 | 482 (500-1) | 300-1¼ 482 (500-1¼) | NA |
| CIRCLING | 440-1 | 622 (700-1) | 440-1¾ 622 (700-1¾) | NA |

CALIPATRIA, CALIFORNIA
 Amdt 1 12MAR09

33°08'N-115°31'W

RNAV (GPS) RWY 8

CLIFF HATFIELD MEML (CLR)