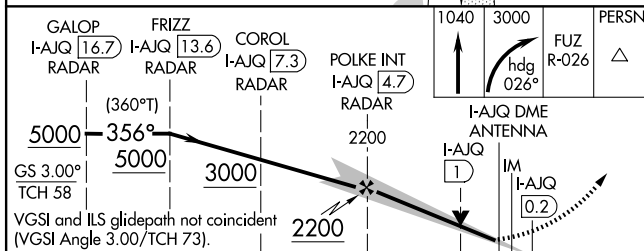
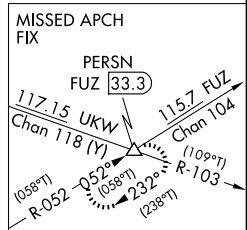
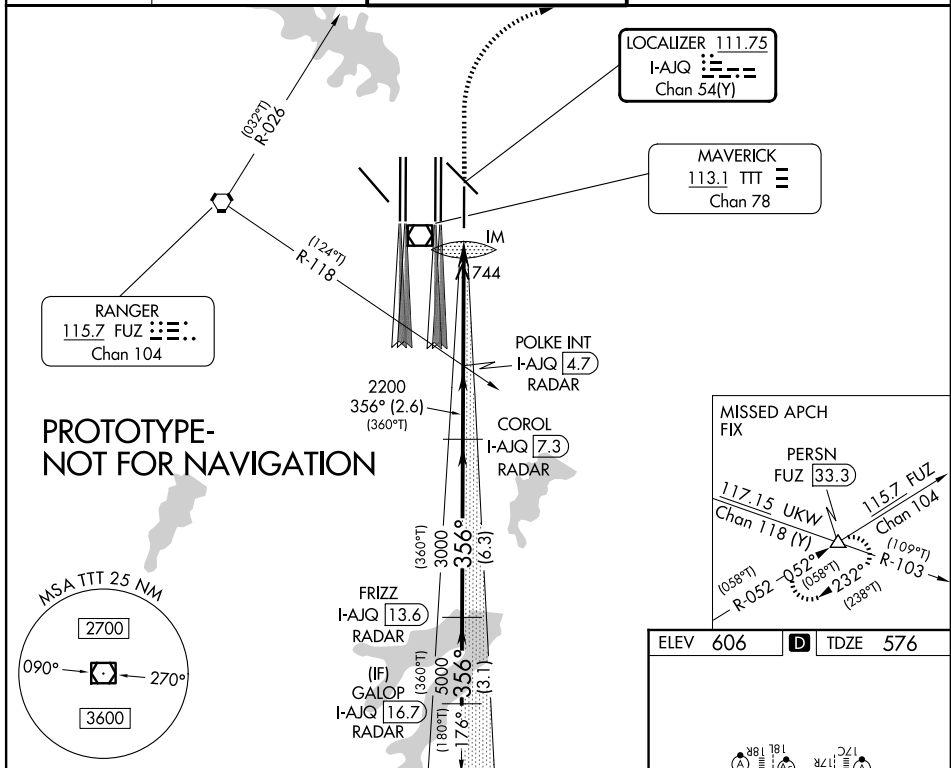


LOC/DME I-AJQ 111.75 Chan 54 (Y)	APP CRS 356°	Rwy Ldg 8500 TDZE 576 Apt Elev 606
--	------------------------	---

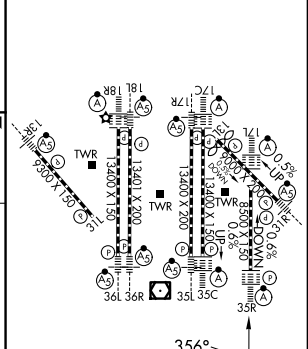
ILS or LOC RWY 35R

DALLAS-FORT WORTH INTL (DFW)

DME or RADAR required.		ALSF-2	MISSED APPROACH: Climb to 1040 then climbing right turn to 3000 on heading 026° and on FUZ VORTAC R-026 to PERSN/FUZ 33.3 DME and hold.
Simultaneous approach authorized with Rwy 36L/R and Rwy 35L/C. For inop ALS, increase S-LOC 35R Cat C/D visibility to 1 3/8 SM.			
D-ATIS ARR 123.775	LONE STAR APP CON 119.4	DFW TOWER 126.55 127.5 EAST 124.15 134.9 WEST	GND CON 121.65 121.8 EAST 121.85 WEST



ELEV 606	D	TDZE 576
----------	----------	----------



CATEGORY	A	B	C	D
S-ILS 35R	776/18 200 (200-1/2)			
S-LOC 35R	1040/24	464 (500-1/2)	1040/50	464 (500-1)

HRL all rwys				
REIL Rws 13L and 31L				
TDZL/RCLS all rwys except 13L, and 31L				
FAF to MAP 4.9 NM				
Knots	60	90	120	150 180
Min:Sec	4:54	3:16	2:27	1:58 1:38