

Flight Procedures Cover Page	Task Action: FLIGHT CHECK	Task Type: IAP	Estimated Chart Date: 05/14/2026	APWS Task ID: BCAE749D0A8549C39BDDA81D60D55F05	APWS Project ID: 9D66673AAE964A218CDFFE4C0B54AC1A
Procedure: ILS OR LOC RWY 35R AMDT 5		Enroute: NO	Specialist: Johnson, Raymond		Agreement Number:
Airport ID: KDFW			Airport City: DALLAS-FORT WORTH		State: TX
Facility ID: AJQ	Facility Type: ILS	Flight Inspection Remark Type: New FC Slot			

Procedure Comments:

PROCEDURE COMPLETED USING ACTIVE AIRPORT AIRNAV DATA

CONTACT: RAKE MCGRAW, AJV-A422 MANAGER, 405.954.8711

03/13/26 This is an updated copy of the form developed on 01/29/26.

F FILE:

1. CHANGED MISSED APPROACH HOLDING INSTRUCTIONS FROM CLIMB TO 1040 THEN CLIMBING RIGHT TURN TO 3000 ON HEADING 026 AND ON FUZ VORTAC R-026 TO PERSN/FUZ 33.26 DME AND HOLD TO CLIMB TO 1040 THEN CLIMBING RIGHT TURN TO 3000 ON HEADING 026 AND ON FUZ VORTAC R-052 TO PERSN/FUZ 33.26 DME AND HOLD.



FIPC BASIC FORM

PROCEDURE: ILS OR LOC RWY 35R AMDT 5		AIRPORT NAME: DALLAS-FORT WORTH INTL		AIRPORT ID: KDFW	SPECIAL CONTROL NO: OP-02-209-26
FAC ID: AJQ		CITY: DALLAS-FORT WORTH		ST: TX	ORIG CHART DATE: 05/14/2026
DFL TYPE: PROC/A	THIRD PARTY: <input type="checkbox"/> YES	EST. TIME ON SITE: 0.4	REIMB. NUMBER:	PTS TASK ID: BCAE749D0A8549C39BDDA81D60D55F05	

PREFLIGHT NOTES

REVIEWER:	DATE:
COMMENTS:	CHECK ONE: <input type="checkbox"/> FLT CK REQ <input type="checkbox"/> NFCR <input type="checkbox"/> REJECT
	<input type="checkbox"/> YES <input type="checkbox"/> NO
	CPV COMPLETE? <input checked="" type="checkbox"/> X <input type="checkbox"/>

PROCEDURE RESULTS

INSPECTION DATE: 03/11/2026	CREW #: VN387	N #: N68	INSTRUMENT PROCEDURE STATUS: <input checked="" type="checkbox"/> SAT <input type="checkbox"/> SAT W/CHANGES <input type="checkbox"/> UNSAT	ARINC CODING: <input type="checkbox"/> SAT <input type="checkbox"/> SAT/GOLD <input type="checkbox"/> UNSAT
FLIGHT INSPECTOR SIGNATURE: justus r bray @ 03/11/2026 17:52		PRINTED NAME: BRAY, JUSTUS ROBERT		NOTAM INITIATED? <input type="checkbox"/> YES <input checked="" type="checkbox"/> NO

FLIGHT INSPECTOR REMARKS:
All obstacles sat. Ensure new missed approach procedure states that its the R-052 from FUZ VORTAC to 33.3 DME and NOT the R-026. Will document on report.

IN-FLIGHT OBSTACLE REPORT

OBSTRUCTION ID #:	COORDINATES OR LOCATION:	GNSS ALTITUDE (MSL):	BAROMETRIC ALTITUDE (MSL):	HEIGHT ABOVE GROUND LEVEL:
--------------------------	---------------------------------	-----------------------------	-----------------------------------	-----------------------------------

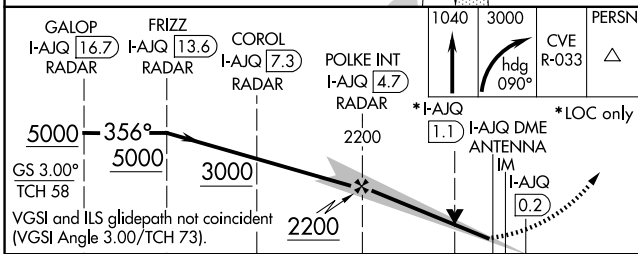
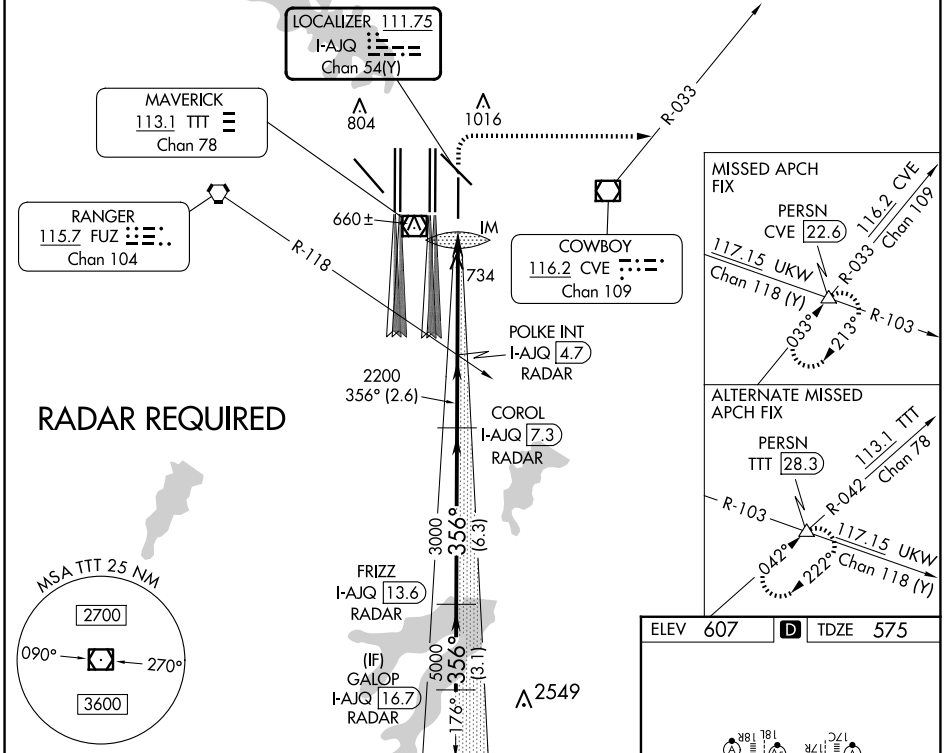
LOC/DME I-AJQ 111.75 Chan 54 (Y)	APP CRS 356°	Rwy Ldg TDZE Apt Elev 8500 575 607
--	------------------------	--

CURRENT

ILS or LOC RWY 35R

DALLAS-FORT WORTH INTL (DFW)

Simultaneous approach authorized with Rwy 36L/R and Rwy 35L/C. DME required.		APPROACH: Climb to 1040 then climbing right turn to 3000 on heading 090° and CVE VOR/DME R-033 to PERSN/CVE 22.6 DME and hold.			
D-ATIS ARR 123.775 DEP 135.925	LONE STAR APP CON 119.4	DFW TOWER 126.55 127.5 EAST 124.15 134.9 WEST	GND CON 121.65 121.8 EAST 121.85 WEST	CLNC DEL 128.25	CPDLC



ELEV 607	TDZE 575
HIRL all Rwys REIL Rws 13L and 31L TDZ/CL all Rws except 13L, and 31L FAF to MAP 4.9 NM	
Knots	60 90 120 150 180
Min:Sec	4:54 3:16 2:27 1:58 1:38

CATEGORY	A	B	C	D
S-ILS 35R	775/18 200 (200-½)			
S-LOC 35R	1040/24	465 (500-½)	1040/50	465 (500-1)

SC-2, 30 OCT 2025 to 27 NOV 2025

SC-2, 30 OCT 2025 to 27 NOV 2025

LOC/DME I-AJQ 111.75 Chan 54 (Y)	APP CRS 356°	Rwy Ldg 8500
		TDZE 575
		Apt Elev 607

ILS RWY 35R (SA CAT I)

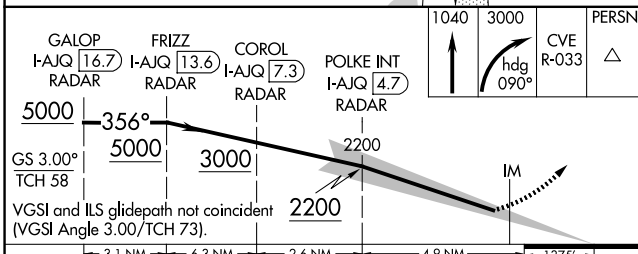
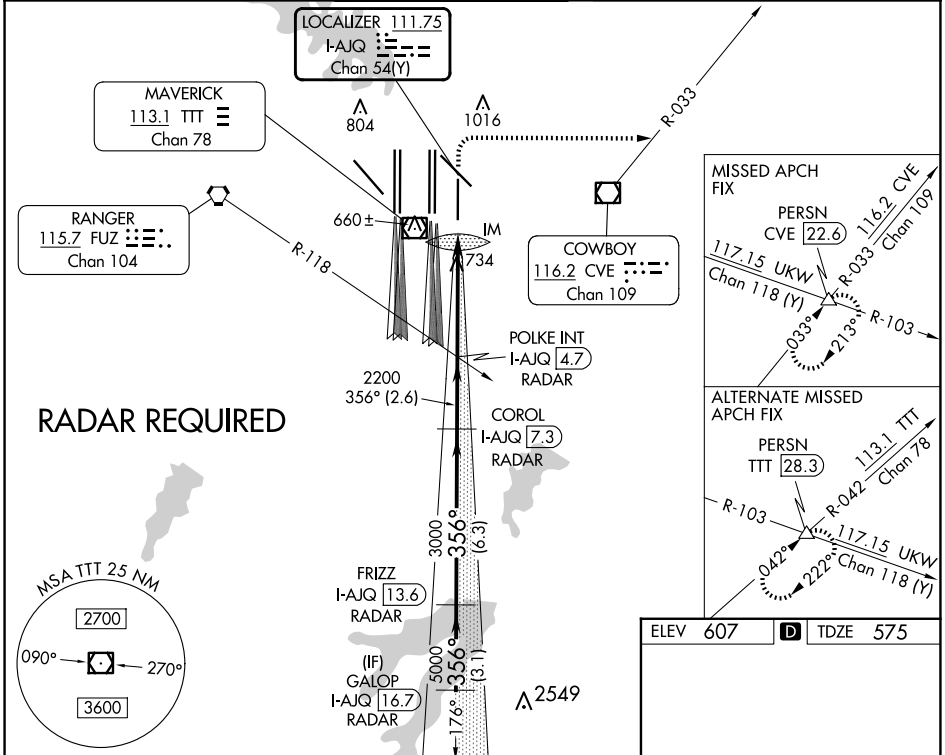
DALLAS-FORT WORTH INTL (DFW)

CURRENT

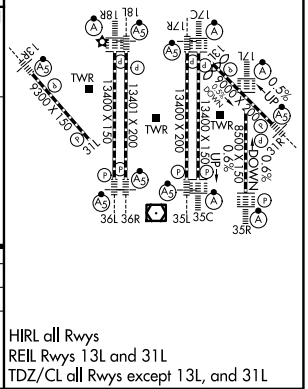
Simultaneous approach authorized with Rwy 36L/R and Rwy 35L/C. DME required. Requires specific OPSPEC, MSPEC, or LOA approval and use of HUD to DH.

ROACH: Climb to 1040 then climbing right turn to 3000 on heading 090° and CVE VOR/DME R-033 to PERSN/CVE 22.6 DME and hold.

D-ATIS ARR 123.775 DEP 135.925	LONE STAR APP CON 119.4	DFW TOWER 126.55 127.5 EAST 124.15 134.9 WEST	GND CON 121.65 121.8 EAST 121.85 WEST	CLNC DEL 128.25	CPDLC
--	-----------------------------------	---	---	---------------------------	-------



CATEGORY	A	B	C	D
S-ILS 35R	RA 144/14 150 DA 725			
SA CATEGORY I ILS - SPECIAL AIRCREW & AIRCRAFT CERTIFICATION REQUIRED				



SC-2, 30 OCT 2025 to 27 NOV 2025

SC-2, 30 OCT 2025 to 27 NOV 2025

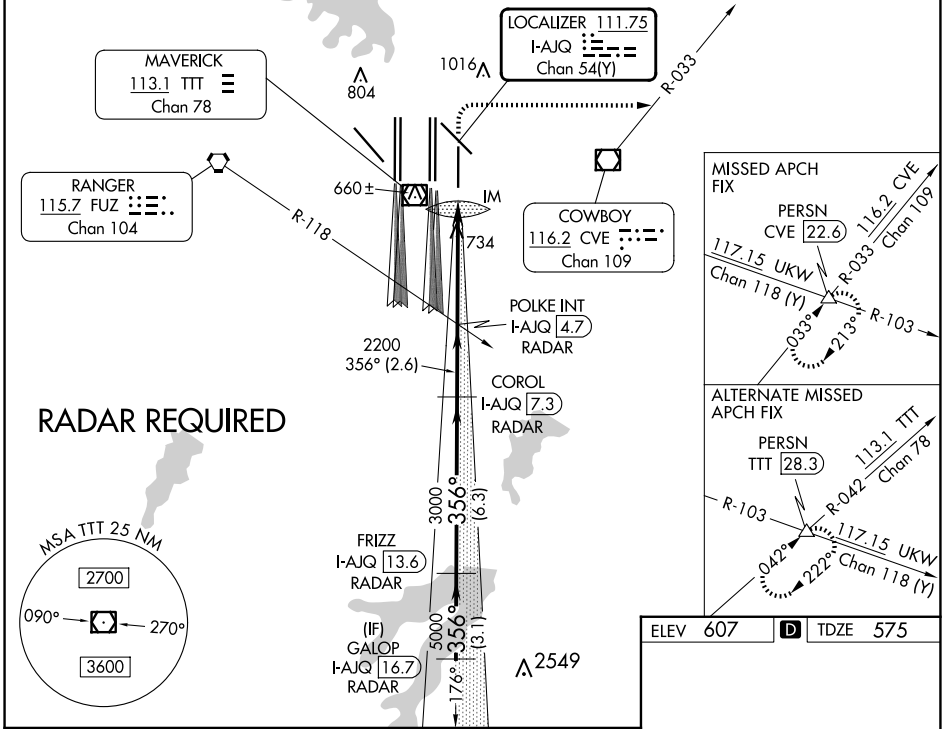
LOC/DME I-AJQ 111.75 Chan 54 (Y)	APP CRS 356°	Rwy Ldg TDZE Apt Elev 8500 575 607
---	------------------------	--

ILS RWY 35R (CAT II & III)

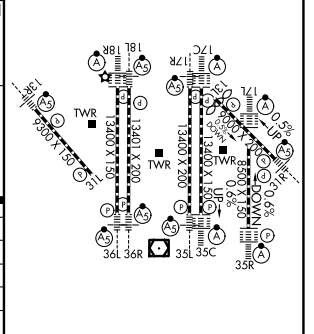
FORT WORTH INTL (DFW)

CURRENT

Simultaneous approach authorized with Rwy 36L/R and Rwy 35L/C. VOR/DME required.		MISSED APPROACH: Climb to 1040 then climbing right turn to 3000 on heading 090° and CVE VOR/DME R-033 to PERSN/CVE 22.6 DME and hold.			
D-ATIS ARR 123.775 DEP 135.925	LONE STAR APP CON 119.4	DFW TOWER 126.55 127.5 EAST 124.15 134.9 WEST	GND CON 121.65 121.8 EAST 121.85 WEST	CLNC DEL 128.25	CPDLC



GALOP I-AJQ 16.7 RADAR	FRIZZ I-AJQ 13.6 RADAR	COROL I-AJQ 7.3 RADAR	POLKE INT I-AJQ 4.7 RADAR	1040	3000	CVE R-033	PERSN
5000	5000	3000	2200	IM 671	hdg 090°		
GS 3.00° TCH 58	5000	3000	2200				
VGS1 and ILS glidepath not coincident (VGS1 Angle 3.00/TCH 73).							
3.1 NM		6.3 NM		2.6 NM		4.9 NM	
A		B		C		D	
S-ILS 35R	CAT II RA 94/12			100 DA 675			
S-ILS 35R	CAT IIIa			RVR 07			
S-ILS 35R	CAT IIIb			RVR 06			
S-ILS 35R	CAT IIIc			NA			



CATEGORY II & III ILS - SPECIAL AIRCREW & AIRCRAFT CERTIFICATION REQUIRED

SC-2, 30 OCT 2025 to 27 NOV 2025

SC-2, 30 OCT 2025 to 27 NOV 2025