

LOC/DME I-AJQ <b>111.75</b> Chan <b>54</b> (Y)	APP CRS <b>356°</b>	Rwy Ldg TDZE Apt Elev <b>8500</b> <b>576</b> <b>606</b>
------------------------------------------------------	------------------------	------------------------------------------------------------------------

# ILS RWY 35R (CAT II & III)

DALLAS-FORT WORTH INTL (DFW)

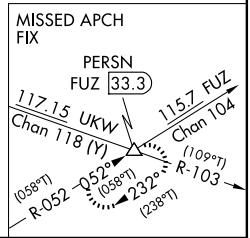
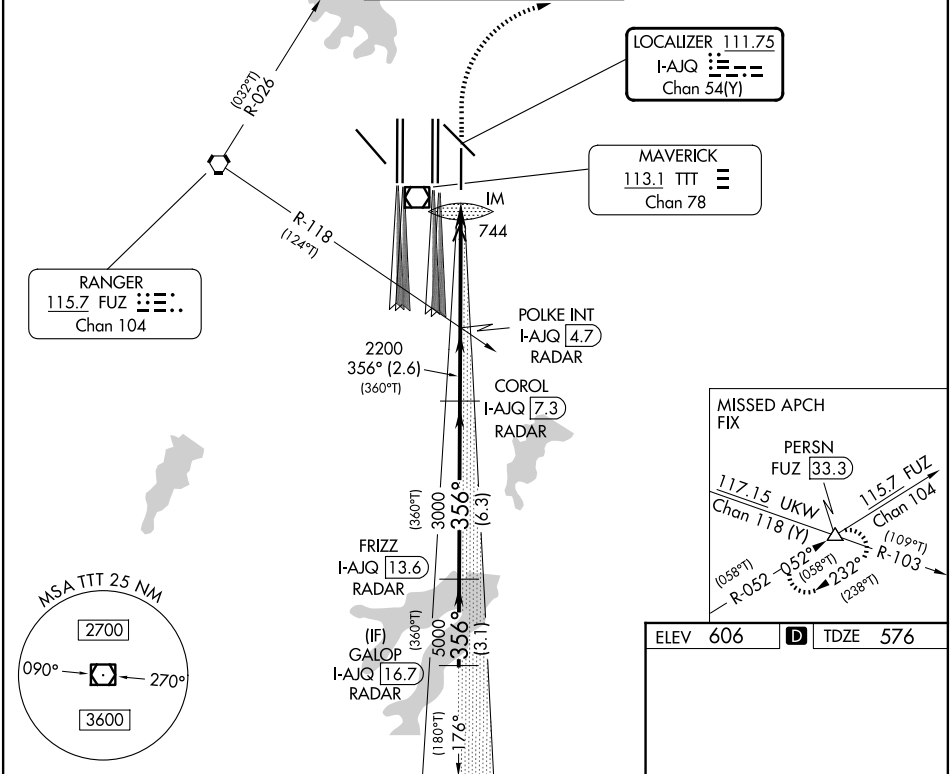
DME or RADAR required.

ALSF-2

MISSED APPROACH: Climb to 1040 then climbing right turn to 3000 on heading 026° and on FUZ VORTAC R-026 to PERSN/FUZ 33.3 DME and hold.

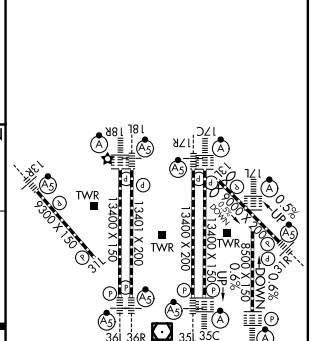
Simultaneous approach authorized with Rwy 36L/R and Rwy 35L/C.  
CAT II: RVR 1000 authorized with specific OPSPEC, MSPEC, or LOA approval and use of autoland or HUD to touchdown.

D-ATIS ARR <b>123.775</b>	LONE STAR APP CON <b>119.4</b>	DFW TOWER <b>126.55 127.5</b> EAST <b>124.15 134.9</b> WEST	GND CON <b>121.65 121.8</b> EAST <b>121.85</b> WEST
------------------------------	-----------------------------------	-------------------------------------------------------------------	-----------------------------------------------------------



ELEV 606	<b>D</b>	TDZE 576
----------	----------	----------

GALOP I-AJQ 16.7 (360°T) RADAR	FRIZZ I-AJQ 13.6 (360°T) RADAR	COROL I-AJQ 7.3 (360°T) RADAR	POLKE INT I-AJQ 4.7 (360°T) RADAR	1040 3000	FUZ R-026	PERSN
5000	5000	3000	2200	IM 672		
GS 3.00° TCH 58	356°	3000	2200			
VGSi and ILS glidepath not coincident (VGSi Angle 3.00/TCH 73).						
3.1 NM    6.3 NM    2.6 NM    4.9 NM    1375'						



CATEGORY	A	B	C	D
S-ILS 35R	CAT II RA 92/12 100 DA 676			
S-ILS 35R	CAT III RVR 06			

**CATEGORY II & III ILS - SPECIAL AIRCREW & AIRCRAFT CERTIFICATION REQUIRED**

HIRL all rwys  
 REL Rwy 13L and 31L  
 TDZL/RCLS all rwys except 13L, and 31L