

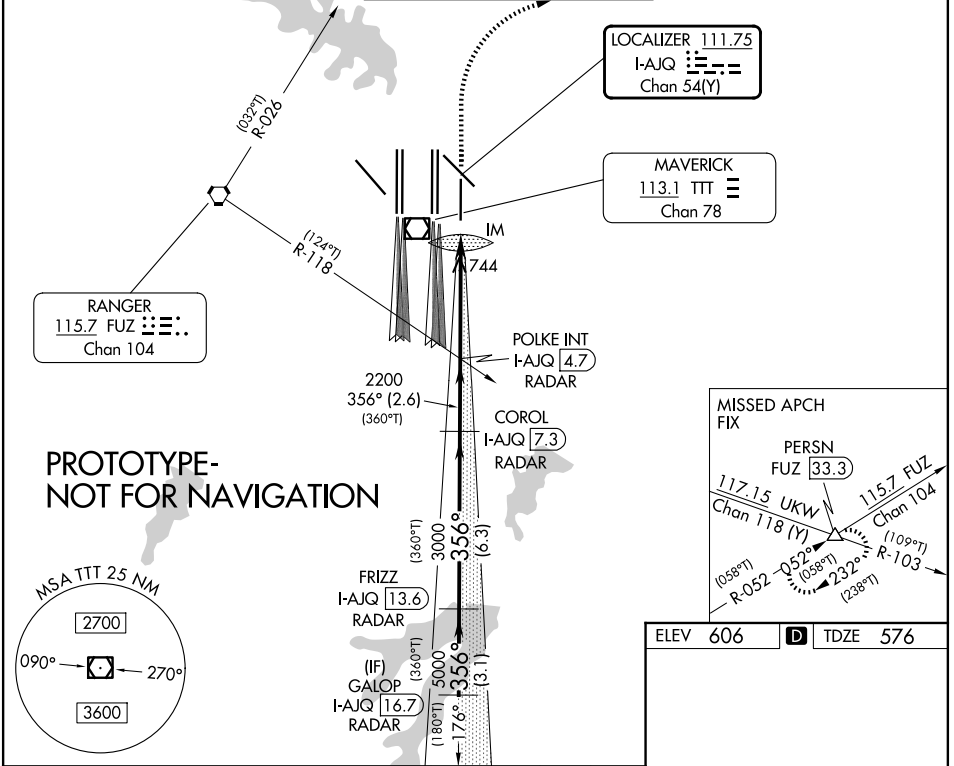
LOC/DME I-AJQ 111.75 Chan 54(Y)	APP CRS 356°	Rwy Ldg 8500 TDZE 576 Apt Elev 606
---	------------------------	---

ILS RWY 35R (SA CAT I)

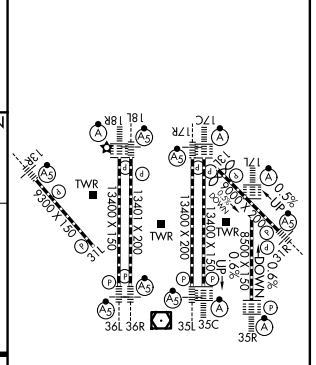
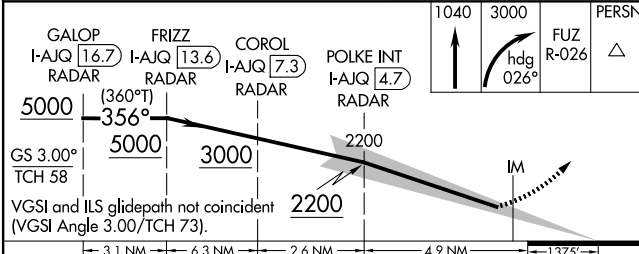
DALLAS-FORT WORTH INTL (DFW)

DME or RADAR required.	ALSF-2	MISSED APPROACH: Climb to 1040 then climbing right turn to 3000 on heading 026° and on FUZ VORTAC R-026 to PERSN/FUZ 33.3 DME and hold.
<p>Simultaneous approach authorized with Rwy 36L/R and Rwy 35L/C. Requires specific OPSPEC, MSPEC, or LOA approval.</p>		

D-ATIS ARR 123.775	LONE STAR APP CON 119.4	DFW TOWER 126.55 127.5 EAST 124.15 134.9 WEST	GND CON 121.65 121.8 EAST 121.85 WEST
------------------------------	-----------------------------------	---	---



ELEV 606	D	TDZE 576
-----------------	----------	-----------------



CATEGORY	A	B	C	D
S-ILS 35R	RA 139/14 150 DA 726			

SA CATEGORY I ILS - SPECIAL AIRCREW & AIRCRAFT CERTIFICATION REQUIRED

HIRL all rwys
REL Rwy 13L and 31L
TDZL/RCLS all rwys except 13L, and 31L