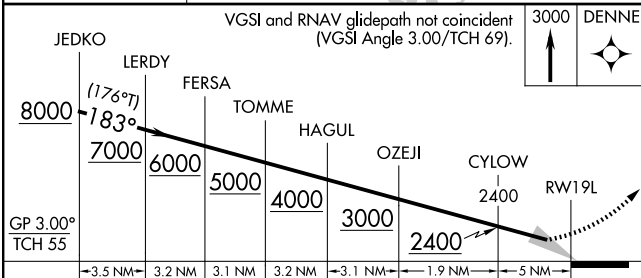
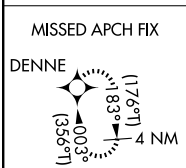
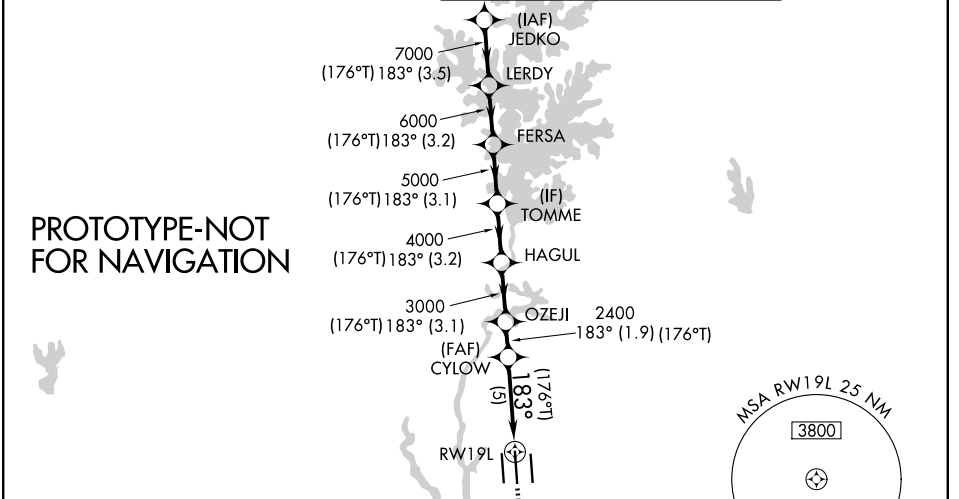


APP CRS	Rwy Ldg 10000
183°	TDZE 742
	Apt Elev 748

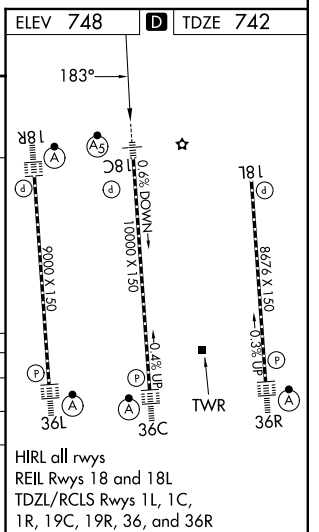
RNAV (RNP) Z RWY 19L

CHARLOTTE/DOUGLAS INTL (CLT)

RNP AR APCH - GPS.		MALSR	MISSED APPROACH: Climb to 3000 direct DENNE and hold.	
<p>▼ For uncompensated Baro-VNAV systems, procedure NA below -7°C or above 54°C. Simultaneous approach authorized.</p>				
<p>CHARLOTTE APP CON</p> <p>128.325 (001°-119°) 257.2 (180°-359°)</p> <p>120.05 (120°-295°) 307.8 (360°-179°)</p> <p>134.75 (296°-360°)</p>		<p>CHARLOTTE TOWER</p> <p>118.1 257.8 (Rwys 18L-36R)</p> <p>126.4 257.8 (Rwy 18C-36C)</p> <p>133.35 257.8 (Rwy 18R-36L)</p>		<p>GND CON</p> <p>121.8 348.6 (W)</p> <p>121.9 348.6 (E)</p>



GP 3.00°	A		B		C		D
TCH 55							
RNP 0.11 DA	1067/26		325 (400-½)				
RNP 0.30 DA	1177/40		435 (500-¾)				



AUTHORIZATION REQUIRED

HIRL all rwys
 REIL Rwys 18 and 18L
 TDZL/RCLS Rwys 1L, 1C,
 1R, 19C, 19R, 36, and 36R