

Flight Procedures Cover Page	Task Action: P-NOTAM	Task Type: IAP	Estimated Chart Date: 07/11/2024	APWS Task ID: BEBBE86C40B2462282AFB33A96D81CDA	APWS Project ID: 41808ADB09534A16B359A5D4A2F2045F
Procedure: ILS OR LOC RWY 4 AMDT 38B		Enroute: NO	Specialist: Boone-walt, Rose		Agreement Number:
Airport ID: KLGA			Airport City: NEW YORK		State: NY
Facility ID:	Facility Type:	Flight Inspection Remark Type:			

**Procedure Comments:**

Processed IAW Technical Support Group (AJF-17) Memo dated 07/07/2021, Subject: Guidance for Procedural Changes Requiring Flight Inspection/Validation

CONTACT: CASEY HILL AJV-A412 LEAD: 405.945.0624



Digitally signed by  
**PABLO ORTIZ-JR**  
May 09, 2024

LOC/DME I-LGA	APP CRS	Rwy Idg	<b>7001</b>
<b>110.5</b>	<b>044°</b>	TDZE	<b>21</b>
Chan <b>42</b>		Apt Elev	<b>21</b>

**OLD**

**ILS or LOC RWY 4**  
LAGUARDIA (LGA)

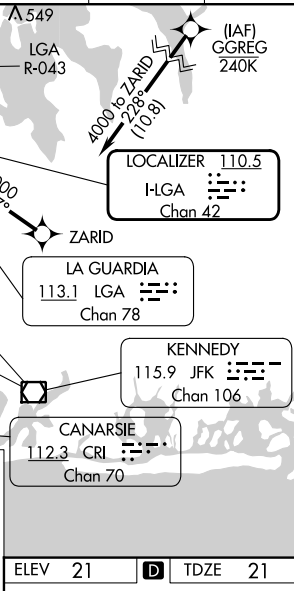
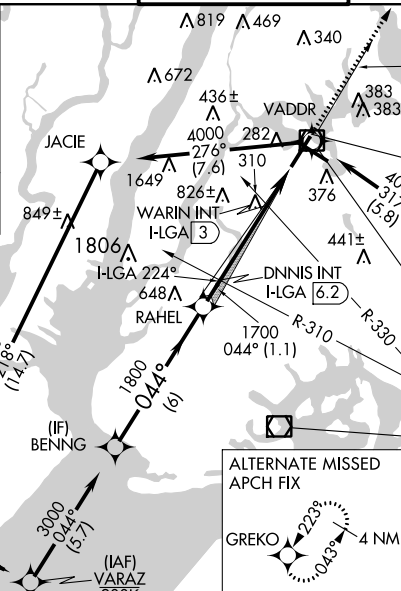
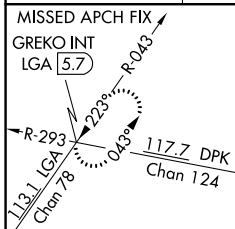
RNP APCH - GPS.

**▼** Rwy 4 helicopter visibility reduction below RVR 5000 NA. Inop table does not apply to S-ILS 4 all Cats, S-LOC 4 Cats A and B and WARIN fix minimums Cats A and B.  
**▲** For inop ALS increase S-ILS 4 all Cats visibility to RVR 4500. Going below glidepath may not provide obstacle clearance inside DA. Crossing Rwy threshold below charted TCH may not provide required visual area obstacle clearance. DME from LGA VOR/DME. Autopilot couple approach NA. Circling NA northwest of Rwy 4 and southwest of Rwy 13.  
 \* RVR 2400 authorized with use of FD or HUD to DA.



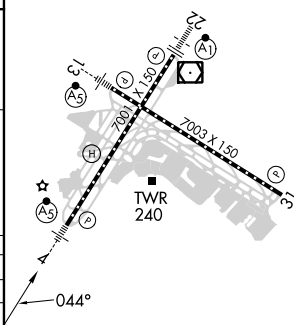
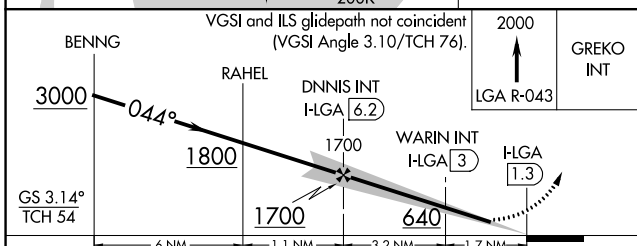
**MISSED APPROACH:**  
Climb to 2000 on LGA VOR/DME R-043 to GREKO INT/LGA 5.7 DME and hold, continue climb-in-hold to 2000.

D-ATIS ARR <b>125.95</b>	NEW YORK APP CON	LAGUARDIA TOWER	GND CON	CLNC DEL	CPDLC
D-ATIS DEP <b>127.05</b>	<b>120.8 263.0</b>	<b>118.7 263.0</b>	<b>121.7 263.0</b>	<b>135.2</b>	



NE-2, 28 DEC 2023 to 25 JAN 2024

NE-2, 28 DEC 2023 to 25 JAN 2024



CATEGORY	A	B	C	D
S-ILS 4 *	283/40 262 (300-¾)			
S-LOC 4	640/50	619 (700-1)	640-1⅜	619 (700-1⅝)
<b>C</b> CIRCLING	680-1	659 (700-1)	700-2 679 (700-2)	760-2¼ 739 (800-2¼)
WARIN FIX MINIMUMS (DUAL VOR RECEIVERS OR DME REQUIRED)				
S-LOC 4	560/50	539 (600-1)	560/55	539 (600-1)
<b>C</b> CIRCLING	680-1	659 (700-1)	700-2 679 (700-2)	760-2¼ 739 (800-2¼)

TDX/CL Rws 4, 13 and 22 HIRL Rws 4-22 and 13-31 REIL Rwy 31					
FAF to MAP 4.9 NM					
Knots	60	90	120	150	180
Min:Sec	4:54	3:16	2:27	1:58	1:38