

Flight Procedures Cover Page	Task Action: Abbreviated Amendment	Task Type: SID	Estimated Chart Date: 05/14/2026	APWS Task ID: BF8C10EB052848D38A3CFCE80AC1954	APWS Project ID: CF2C296746E14B9392AF9BE6F97C358F
Procedure: KRITR SEVEN (RNAV)		Enroute: YES	Specialist: Kunkler, Jamie		Agreement Number:
Airport ID: KCLT			Airport City: CHARLOTTE		State: NC
Facility ID:	Facility Type:	Flight Inspection Remark Type:			

Procedure Comments:

PENDING DATA USED FOR CLT AIRPORT AND RUNWAYS: 05/14/2026. ACTIVE DATA USED FOR SATELLITE AIRPORTS.

RENUMBER RWYS 18R/36L TO RWYS 1L/19R.

PROCESSED IAW TECHNICAL SUPPORT (AJF-17) MEMO DATED 07/07/2021, SUBJECT: GUIDANCE FOR PROCEDURAL CHANGES REQUIRING FLIGHT INSPECTION/VALIDATION.

CONTACT CASIMIR TABAKA 405.954.7931.

QUALITY
20
CHECKED

QUALITY
9
CHECKED
BEGUE

KRITR SIX DEPARTURE (RNAV)

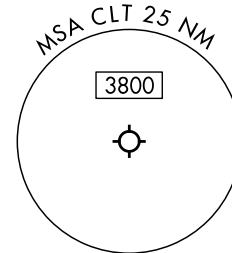
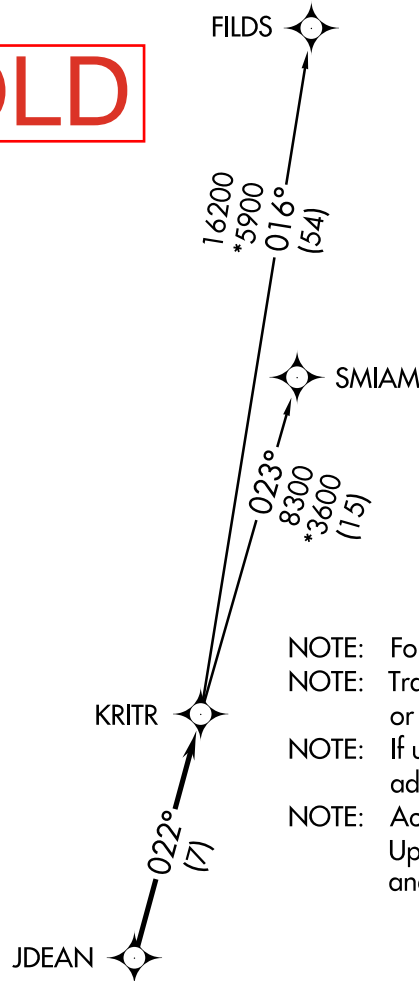
CHARLOTTE DEP CON
 120.5 257.2
 D-ATIS DEP 132.1
 CLNC DEL
 127.15 348.6
 CPDLC
 GND CON
 121.8 348.6 (WEST)
 121.9 348.6 (EAST)
 CHARLOTTE TOWER
 118.1 257.8 (Rwys 18L-36R)
 126.4 257.8 (Rwy 18C-36C)
 133.35 257.8 (Rwy 18R-36L)

OLD

**TOP ALTITUDE:
8000**

RNAV 1- DME/DME/IRU or GPS.

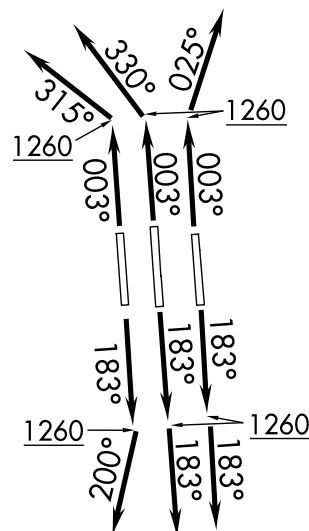
RADAR required.



- NOTE: For turbo jets only.
- NOTE: Transponder code will be issued via PDC or Charlotte CLNC DEL.
- NOTE: If unable to accept climb rates, advise ATC on initial contact.
- NOTE: Accelerate to 250K, if unable advise ATC. Upon reaching 10000 MSL, accelerate to and maintain 280K, if unable advise ATC.

TAKEOFF MINIMUMS

Rwys 18L/C/R, 36C/R: Standard with minimum climb of 500' per NM to 1260.
 Rwy 36L: Standard with minimum climb of 500' per NM to 1400.



(CONTINUED ON FOLLOWING PAGE)

NOTE: Chart not to scale.

SE-2, 30 OCT 2025 to 27 NOV 2025

SE-2, 30 OCT 2025 to 27 NOV 2025

KRITR SIX DEPARTURE (RNAV)



DEPARTURE ROUTE DESCRIPTION
SEE ADDITIONAL REQUIREMENTS ON AAUP



TAKEOFF RUNWAYS 18L/C: Climb on heading 183° to 1260, then on heading 183° or as assigned by ATC on RADAR vectors to JDEAN, thence. . . .

TAKEOFF RUNWAY 18R: Climb on heading 183° to 1260, then on heading 200° or as assigned by ATC on RADAR vectors to JDEAN , thence. . . .

TAKEOFF RUNWAY 36L: Climb on heading 003° to 1260, then on heading 315° or as assigned by ATC on RADAR vectors to JDEAN, thence. . . .

TAKEOFF RUNWAY 36C: Climb on heading 003° to 1260, then on heading 330° or as assigned by ATC on RADAR vectors to JDEAN, thence. . . .

TAKEOFF RUNWAY 36R: Climb on heading 003° to 1260, then on heading 025° or as assigned by ATC on RADAR vectors to JDEAN, thence. . . .

. . . .on track 022° to KRITR, then on assigned transition. Maintain 8000. Expect clearance to filed altitude within 10 minutes after departure.

FILDS TRANSITION (KRITR6.FILDS)

SMIAM TRANSITION (KRITR6.SMIAM)

SE-2, 30 OCT 2025 to 27 NOV 2025

SE-2, 30 OCT 2025 to 27 NOV 2025