

Flight Procedures Cover Page	Task Action: FLIGHT CHECK	Task Type: IAP	Estimated Chart Date: 05/14/2026	APWS Task ID: C0D60E49FC0547C68678EEA6D65C3A99	APWS Project ID: 7F22DACEC74148E1AC4E02940B692DA9
Procedure: RNAV (GPS) RWY 1 AMDT 1		Enroute: NO	Specialist: Smith, Rodney		Agreement Number:
Airport ID: 1H2			Airport City: EFFINGHAM		State: IL
Facility ID:	Facility Type:	Flight Inspection Remark Type: New FC Slot			

Procedure Comments:
PENDING AIRPORT DATA USED.

HARD DATE: CONCURRENT WITH RNAV GPS RWY 11 AND RNAV GPS RWY 29.

APPROVAL REQUEST TO PUBLISH VDA BELOW VGSI.

POC KYLE THOMPSON 405-954-2135





Federal Aviation Administration

Memorandum

To: Flight Technologies and Procedures Division THRU: Wade Terrell,
Manager Flight Procedures and Airspace Group.

From: Manager, Instrument Flight Procedures (IFP) Team, AJV-A

Subject: Approval Request: Non-coincident Visual Glide Slope Indicator and
Glidepath Angle (GPA) or Vertical Descent Angle (VDA) at EFFINGHAM
COUNTY RGNL, (1H2), EFFINGHAM, IL, RNAV (GPS) RWY 1

FAAO 8260.3G, Para 2-6-2. a. Approval is required to establish a GPA or a VDA (of a procedure where the FAC is straight-in aligned) that is more than 0.20 degrees greater than the glidepath angle of a visual glide slope indicator (VGSI) installed on the same runway. FAAO 8260.3G, Para 2-6-2. b. Approval is required to establish a VDA (of a procedure where the FAC is straight-in aligned) that is less than the angle of a VGSI installed to the same runway

Runway 1 VGSI at EFFINGHAM COUNTY RGNL (1H2) has a Glidepath Angle (GPA) of 4.00 degrees and a TCH of 40.3 feet while the published approach has a Vertical Descent Angle (VDA) / TCH of 3.04/50. This procedure is being amended to increase the VDA to 3.77 degrees with a TCH of 40 feet. The procedure is designed for Categories A through C. Using a VDA of 3.77 degrees provides obstacle clearance for the published LNAV minimums, while still allowing for the retention of CAT C minima. 3.77 degrees is the CAT C maximum VDA from table 8260.3 TABLE 2-6-1. The note, VGSI AND RNAV GLIDEPATH NOT COINCIDENT (VGSI ANGLE {ANGLE}/TCH {FEET}) will be published.

Funding to physically change the GPA/VGSI is not available at this time. Due to the lack of funding there currently is not a timeline to rectify the VGSI non-coincident condition. If approval to establish the 3.77 VDA is not granted this procedure will no longer be available to CAT C aircraft and the safety provided to the public by utilizing this Instrument Flight Procedure on days with inclement weather and/or under IFR conditions will no longer be offered. The airport needs CAT C minimums to support operations.

Request approval to establish a 3.77 VDA.

APP CRS 009°	Rwy Ldg TDZE Apt Elev	3399 580 585
------------------------	-----------------------------	---

RNAV (GPS) RWY 1

EFFINGHAM COUNTY RGNL (1H2)

RNP APCH - GPS.

- ▼ Rwy 1 helicopter visibility reduction below 1 SM NA. Straight-in Rwy 1 NA at night, Circling Rwy 1, 19 NA at night. When local altimeter setting not received, use OLY altimeter setting and increase all MDA 80 feet and increase LNAV visibility Cat C 1/8 SM, and Circling visibility Cat C 1/4 SM.
- ▲

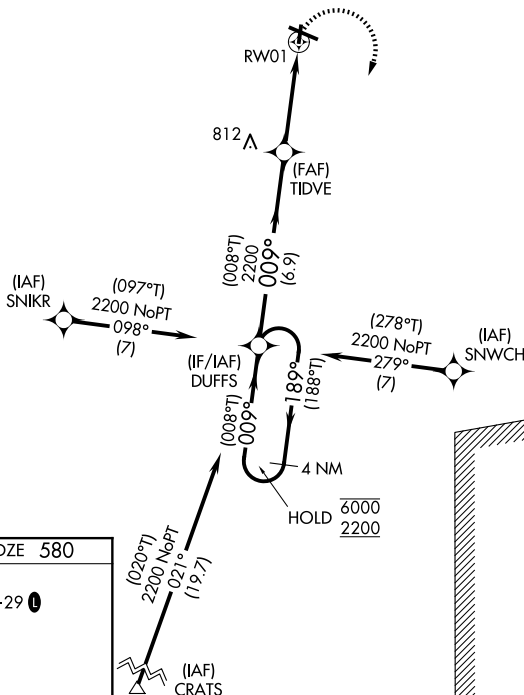
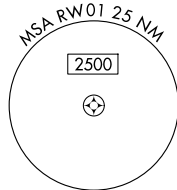
MISSED APPROACH: Climbing right turn to 2200 direct DUFFS and hold.

AWOS-3PT
118.375

KANSAS CITY CENTER
124.3 269.15

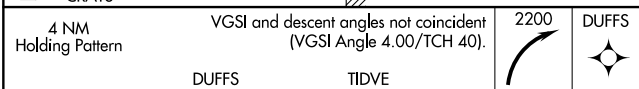
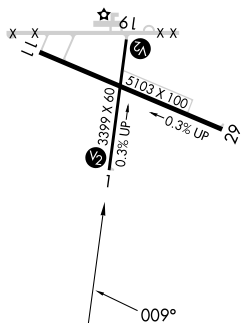
UNICOM
122.725 (CTAF) 0

PROTOTYPE-NOT FOR NAVIGATION



RED HILLS MOA

ELEV 585	TDZE 580
REIL Rwy 11 and 29	
MIRL Rwy 1-19 and 11-29	



CATEGORY	A	B	C	D
LNAV MDA	1020-1	440 (500-1)	1020-1 1/8 440 (500-1 1/8)	NA
CIRCLING	1020-1 435 (500-1)	1120-1 535 (600-1)	1460-2 1/2 875 (900-2 1/2)	NA

APP CRS	Rwy Idg	3400
009°	TDZE	580
	Apt Elev	585

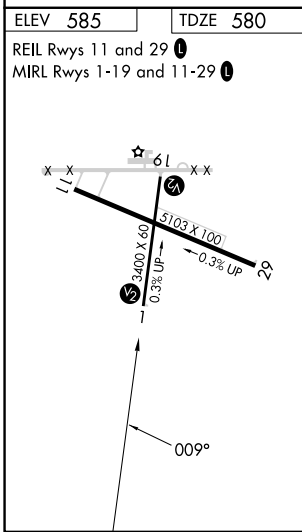
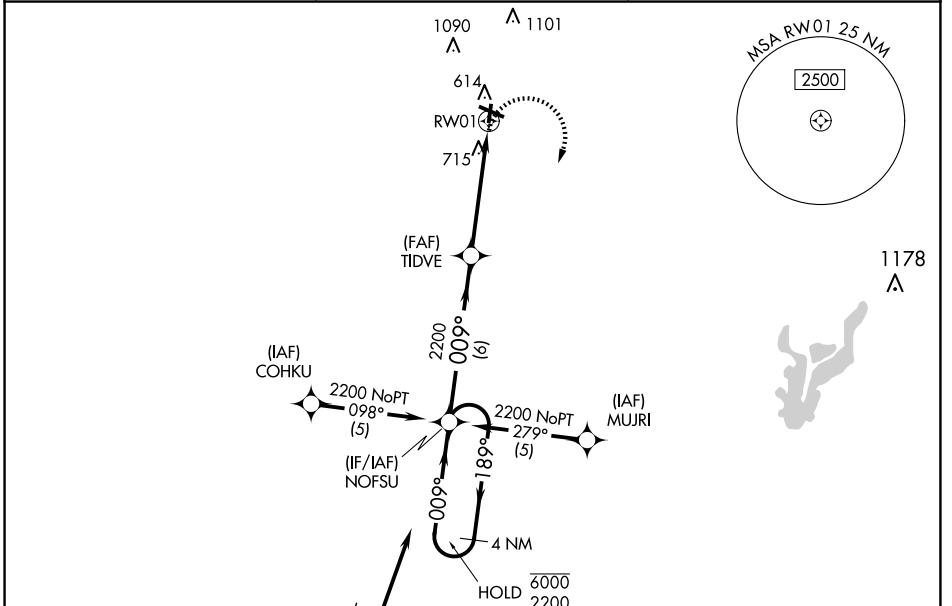
OLD

RNAV (GPS) RWY 1

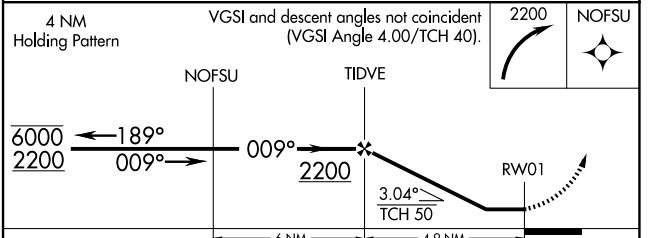
EFFINGHAM COUNTY RGNL (1H2)

RNP APCH - GPS.	<p>▼ Rwy 1 helicopter visibility reduction below 1 SM NA. Straight-in Rwy 1 NA at night, Circling Rwy 1, 19 NA at night. When local altimeter setting not received, use Olney-Noble altimeter setting and increase all MDA 80 feet and increase LNAV visibility Cat C ¼ SM, and Circling visibility Cat C ¼ SM.</p>	MISSED APPROACH: Climbing right turn to 2200 direct NOFSU and hold.
-----------------	---	---

AWOS-3PT 118.375	KANSAS CITY CENTER 124.3 269.15	UNICOM 122.725 (CTAF) 0
----------------------------	---	-----------------------------------



ELEV 585	TDZE 580
REIL Rwy 11 and 29	
MIRL Rwy 1-19 and 11-29	
<p>Procedure NA for arrivals at CRATS on VS2 southwest bound.</p>	



CATEGORY	A	B	C	D
LNAV MDA	1020-1	440 (500-1)	1020-1¼ 440 (500-1¼)	NA
C CIRCLING	1020-1 435 (500-1)	1140-1 555 (600-1)	1440-2½ 855 (900-2½)	NA

EC-3, 30 OCT 2025 to 27 NOV 2025

EC-3, 30 OCT 2025 to 27 NOV 2025