

|   |                              |   |                                     |   |  |
|---|------------------------------|---|-------------------------------------|---|--|
| Flight Procedures Cover Page              | Task Action:<br>FLIGHT CHECK | Task Type:<br>IAP                             | Estimated Chart Date:<br>11/27/2025 | APWS Task ID:<br>C0DBBE30725047E18C7096FFC70DD8B5 | APWS Project ID:<br>74166A518FF948E5AFF907A25152E9CE |
| Procedure:<br>RNAV (RNP) Z RWY 16L AMDT 1 |                              | Enroute:<br>NO                                | Specialist:<br>Dumar, Ralph         |   | Agreement Number:                                    |
| Airport ID:<br>KDEN                       |                              |   | Airport City:<br>DENVER             |   | State:<br>CO   |
| Facility ID:                              | Facility Type:               | Flight Inspection Remark Type:<br>New FC Slot |                                     |   |  |

Procedure Comments:  
AIRPORT ACTIVE DATA USED.

REMARKS: NEW MISSED APPROACH, ADDED INITIAL SEGMENT JEEPR-JOBOB.  
CONTACT RAKE MCGRAW (AJV-A422)- 405-954-8711

QUALITY  
38  
CHECKED

QUALITY  
37  
CHECKED





|                        |                         |
|------------------------|-------------------------|
| APP CRS<br><b>173°</b> | Rwy Idg<br><b>12000</b> |
|                        | TDZE<br><b>5357</b>     |
|                        | Apt Elev<br><b>5434</b> |



# RNAV (RNP) Z RWY 16L

DENVER INTL (DEN)

▼ For uncompensated Baro-VNAV systems, procedure NA below -25°C (-13°F) or above 45°C (114°F). GPS required. For inoperative MALSR, increase RNP 0.10 all Cats visibility to RVR 4000 and RNP 0.30 all Cats visibility to RVR 5000. Simultaneous approach authorized. Use of FD or AP providing RNAV track guidance required during simultaneous operations.

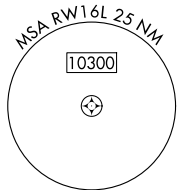
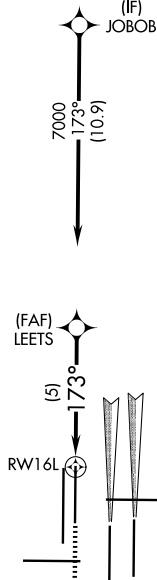
MALSR

MISSED APPROACH: Climb to 5900 then climbing right turn to 10000 direct BINBE and hold, continue climb-in-hold to 10000.

|  |   |                                     |   |                           |       |
|--|---|-------------------------------------|---|---------------------------|-------|
| D-ATIS<br><b>125.6 379.9 (ARR)</b><br><b>134.025 (DEP)</b> | DENVER APP CON<br><b>119.3 307.3 (N)</b><br><b>120.35 379.3 (S)</b> | DENVER TOWER<br><b>135.3 351.95</b> | GND CON<br><b>121.35 379.175 (W)</b><br><b>121.85 377.1 (E)</b> | CLNC DEL<br><b>118.75</b> | CPDLC |
|--|---|-------------------------------------|---|---------------------------|-------|

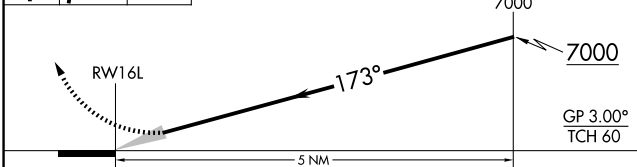
## RADAR REQUIRED

A 6260



5900 10000 BINBE

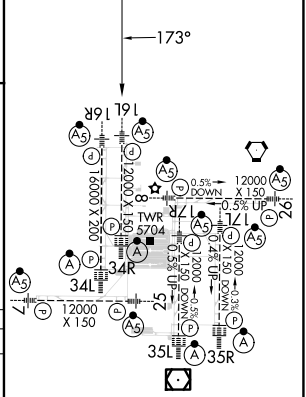
VGSI and RNAV glidepath not coincident (VGSI Angle 3.00/TCH 71).



|             |                     |   |   |   |
|-------------|---------------------|---|---|---|
| CATEGORY    | A                   | B | C | D |
| RNP 0.10 DA | 5617/24 260 (200-½) |   |   |   |
| RNP 0.30 DA | 5683/32 326 (300-¾) |   |   |   |

## AUTHORIZATION REQUIRED

|           |   |           |
|-----------|---|-----------|
| ELEV 5434 | D | TDZE 5357 |
|-----------|---|-----------|



HIRL all Rwys  
TDZ/CL Rwys 7, 16L, 16R,  
17R, 26, 34L, 34R, 35L, 35R

SW-1, 17 APR 2025 to 15 MAY 2025

SW-1, 17 APR 2025 to 15 MAY 2025

**KDEN**  
Denver Intl  
Denver, CO  
RNAV (RNP) Z Rwy 16L, Amdt 1  
1:500,000

Initial JEEPR-JOBBO  
AAO (5273)

Intermediate JOBBO-LEETS  
AAO (5458)

RNP 0.3 Final  
POLE (5395)  
08-022328

RNP 0.1 Final  
Missed Approach  
ASC

Missed Holding  
AAO (8196)

Missed Lvl Sfc  
AAO (6779)

