

DME DME Assessment Results for BRSTL1 path TEREЕ_ALLMA

Results Summary

Flyability:	Completed
DME/DME:	Completed - No Critical DMEs
Name:	Erik J-CTR John
Project File:	C:\Users\Erik J-CTR John\OneDrive - Federal Aviation Administration\Desktop\RNAV Projects\PROJECT FILES\ZJX_ZMA VOR MON\KJAX BRSTL SID\KJAX BRSTL SID DME\BRSTL(RNAV) SID DME 12 DEC 2022.tgs
Output File:	C:\Users\Erik J-CTR John\OneDrive - Federal Aviation Administration\Desktop\RNAV Projects\PROJECT FILES\ZJX_ZMA VOR MON\KJAX BRSTL SID\KJAX BRSTL SID DME\KJAX [IFPA] BRSTL1 20230127_0907 EST\TEREE_ALLMA\KJAX BRSTL1 SID TEREЕ ALLMA 20230127_0907 EST.pdf
Procedure Name:	BRSTL1
Software: DmeDmePlugin:	7.0.2
Date/Time:	01/27/2023 09:07 EST
Databases:	DTED 0

Failures

No Failures

Warnings

No Warnings

Informational

No Informational

Notes For Flight Check

None

Flight Plan

Name	Type	Lat/Lon	Altitude (ft)	VNAV Mode	Ground Speed (kts)	Turn Type	Leg Type
TEREE	WP	N30° 52' 10.90", W081° 53' 27.25"	3000	VNAV	200	FLY_BY	TF
BRSTL	WP	N30° 58' 58.55", W081° 58' 13.83"	5000	VNAV	200	FLY_BY	TF
ALLMA	WP	N31° 32' 11.14", W082° 30' 28.67"	5000	VNAV	200	FLY_BY	TF

Flyability

Flight Type:	SID
Selected Airport:	KJAX [IFPA]
Climb Gradient:	None assigned
Speeds:	130 at the Runway DER
	145 at the end of the VA or VI leg
	200 Ground Speed to 11000 FT
	240 Ground Speed to 18000 FT
	260 Ground Speed to 24000 FT
	340 Ground Speed above 24000 FT
Descent During a Turn:	Allowed
VNAV Mode:	Flight Plan

DME DME Assessment Results for BRSTL1 path TEREЕ_ALLMA

DME/DME	
RNP:	RNP 2
Flight Mode:	Manual
Line of Sight (DTED Level 0 Max):	Evaluated
Inertial Drift:	Enabled
Initial Drift:	0.558 NM
INS Drift Rate:	8.0 NM/Hour
Range Mode:	OSV
RNP Edges:	Evaluated
Min DME Range:	3.0 NM
DME Types:	DME, VOR-DME, VORTAC, TACAN
DME Include Angles:	30 to 150
Critical DMEs:	Not Allowed
DoD Facilities:	Included
Foreign Facilities:	Not included
High DMEs:	Included
Low DMEs:	Included
Terminal DMEs:	Included
Flight Check DMEs:	Not selected
Higher Altitudes:	Not Evaluated
Near Maximum Altitude:	Not Evaluated
Automatic ESVs:	Not enabled
Disabled DMEs:	None

DME/DME (Continued)										
DMEs Used										
#	Name	Lat/Lon	MAGVAR	Range	Type	Source	Critical	Status	Time	Distance
1	SSI	N31° 03' 01.85", W081° 26' 45.47"	4.0 W	40	L	IFPA	NO	Enabled	36.4 %	36.4 %
2	TAY	N30° 30' 16.70", W082° 33' 10.45"	3.0 W	130	H	IFPA	NO	Enabled	36.4 %	36.4 %
3	CRG	N30° 20' 19.97", W081° 30' 35.74"	3.0 W	130	H	IFPA	NO	Enabled	4.4 %	4.5 %
4	NRB	N30° 23' 19.01", W081° 25' 23.08"	6.0 W	40	L	IFPA	NO	Enabled	3.6 %	3.6 %
5	AMG	N31° 32' 11.60", W082° 30' 29.12"	0.0 E	130	H	IFPA	NO	Enabled	64.8 %	64.8 %
6	AYS	N31° 16' 09.93", W082° 33' 23.20"	0.0 E	40	L	IFPA	NO	Enabled	79.5 %	79.5 %

Flight Check DME Selection						
Distance [NM]	Selected DMEs					Alternate
0.0	TAY	CRG	SSI	NRB		
1.6	TAY	CRG	SSI			
2.0	TAY	CRG	NRB	SSI	AYS	
2.3						
4.1	TAY	AYS	SSI			
11.3	TAY	AMG	AYS	SSI		
20.5						
20.7	AMG	AYS				
44.7						

Inertial Drift Segments			
#	Start Location	End Location	Length [NM]
1	N30° 54' 10.65", W081° 54' 51.35"	N30° 55' 41.87", W081° 55' 55.47"	1.7738
2	N31° 08' 38.97", W082° 07' 34.28"	N31° 08' 49.24", W082° 07' 44.21"	0.2221
3	N31° 27' 19.31", W082° 25' 43.38"	N31° 32' 11.14", W082° 30' 28.67"	6.331

DME DME Assessment Results for BRSTL1 path TEREЕ_ALLMA

Available DMEs by Waypoints			
Waypoint Before	Waypoint After	DME List	Suggested DMEs
TEREE	BRSTL	SSI, CRG, AYS, TAY, NRB	
BRSTL	ALLMA	SSI, AYS, AMG, TAY	

User Data Files

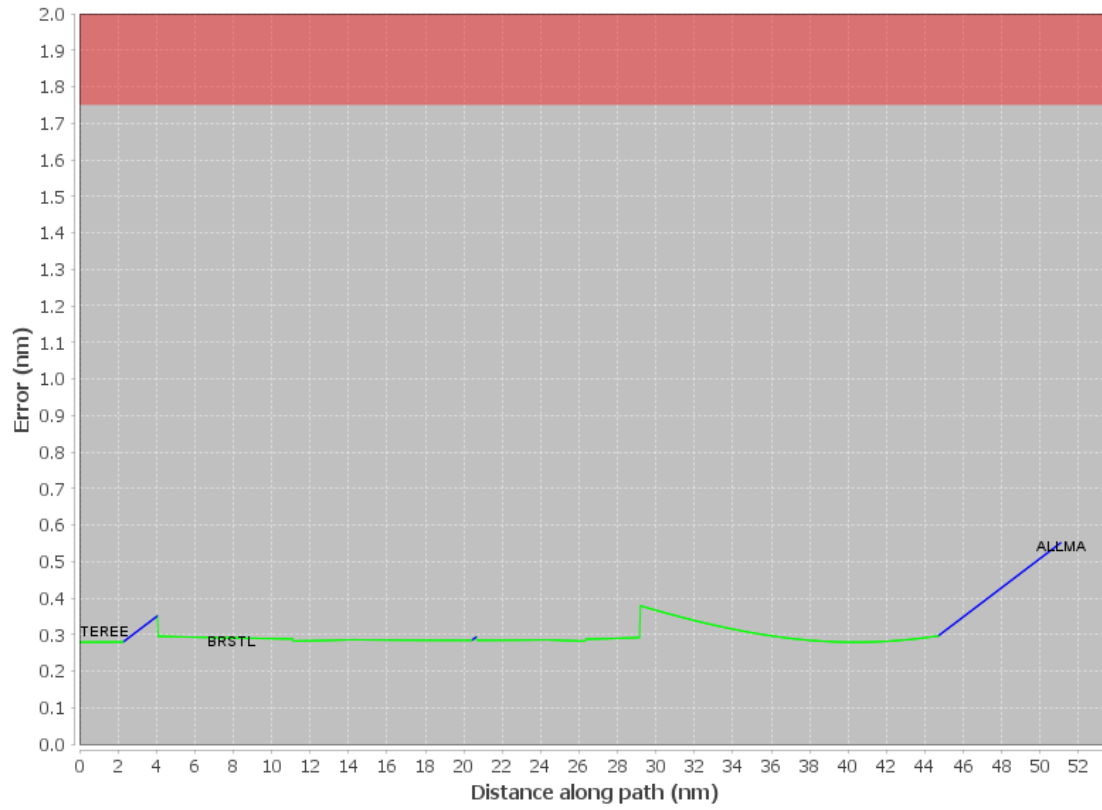
#	File Name
	None

User DMEs

#	Name	Lat/Lon	MAGVAR	Range	Elevation [ft]	Frequency	Replaces	Status
1	ESV SSI FAA 712190-019 SSI [IFPA]	N31° 03' 01.85", W081° 26' 45.47"	4.0 W	40	5.9	109.8	ESV SSI FAA 712190-019	
	ESV:	Bearing [True]: 302.0° to 314.0° Bearing [Mag]: 306.0° to 318.0°				Arc Distance: Out to 55.0 NM Altitude: 4900.0 to 18100.0 ft		
2	TAY FAA 720642-28 TAY [IFPA]	N30° 30' 16.70", W082° 33' 10.45"	3.0 W	130	140	112.9	TAY FAA 720642-28	
	ESV:	Bearing [True]: 20.0° to 70.0° Bearing [Mag]: 23.0° to 73.0°				Arc Distance: Out to 48.0 NM Altitude: 3000.0 to 11000.0 ft		

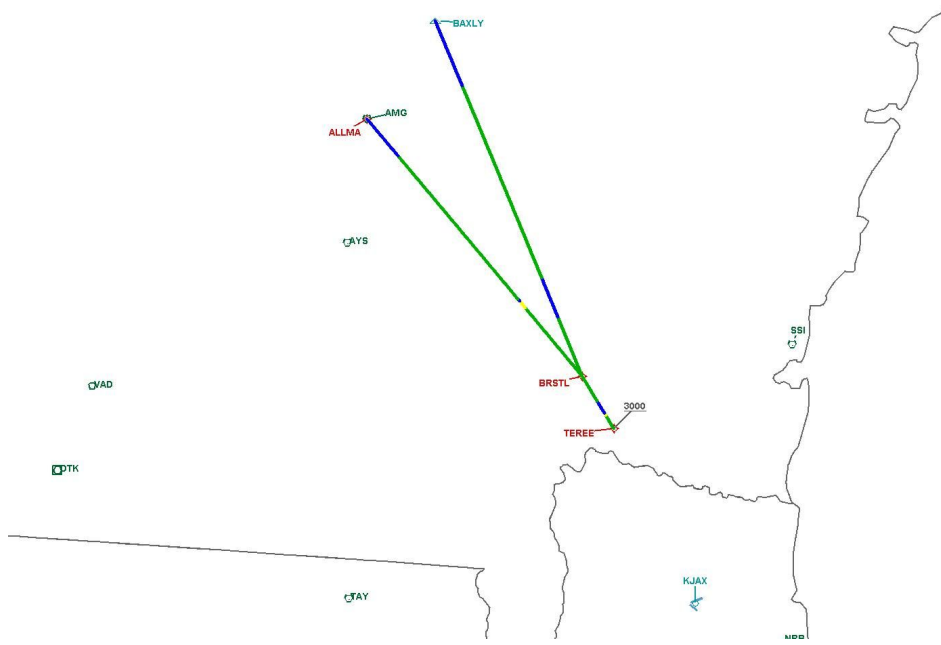
DME DME Assessment Results for BRSTL1 path TEREЕ_ALLMA

DME Error



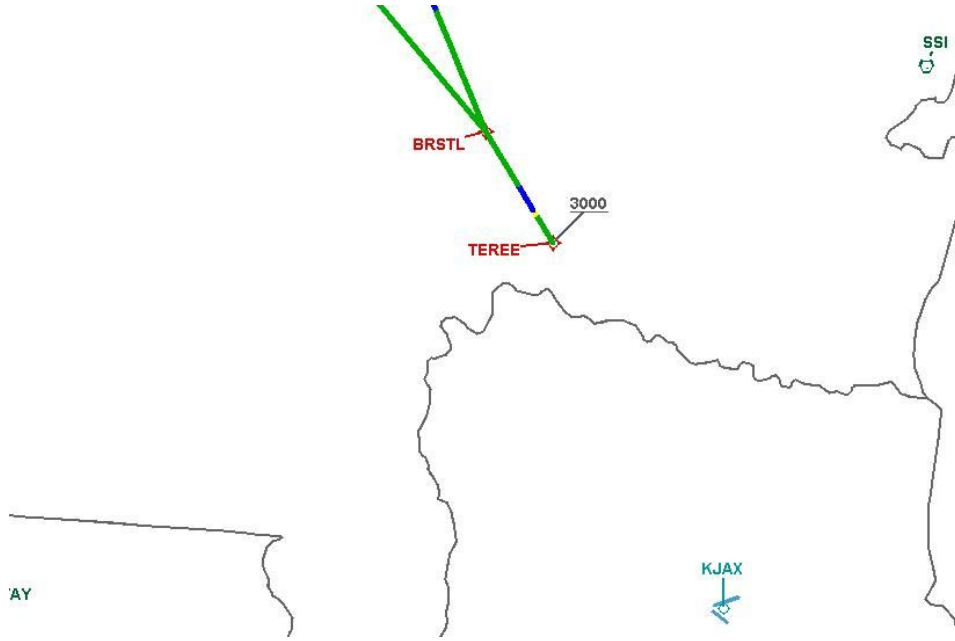
DME DME Assessment Results for BRSTL1 path TERE_ ALLMA

Graphic Depiction 1



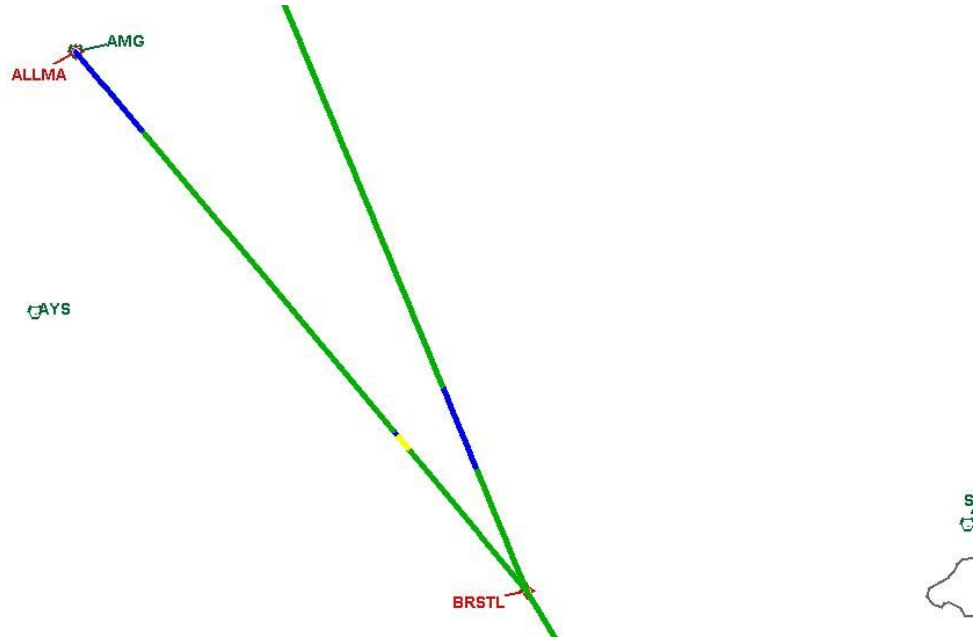
DME DME Assessment Results for BRSTL1 path TERE_ ALLMA

Graphic Depiction 2



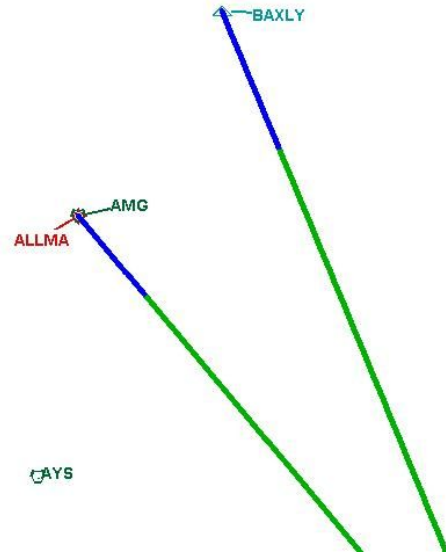
DME DME Assessment Results for BRSTL1 path TERE_ ALLMA

Graphic Depiction 3



DME DME Assessment Results for BRSTL1 path TERE_ ALLMA

Graphic Depiction 4



DME DME Assessment Results for BRSTL1 path BRSTL_BAXLY

Results Summary

Flyability:	Completed
DME/DME:	Completed - No Critical DMEs
Name:	Erik J-CTR John
Project File:	C:\Users\Erik J-CTR John\OneDrive - Federal Aviation Administration\Desktop\RNAV Projects\PROJECT FILES\ZJX_ZMA VOR MON\KJAX BRSTL SID\KJAX BRSTL SID DME\BRSTL(RNAV) SID DME 12 DEC 2022.tgs
Output File:	C:\Users\Erik J-CTR John\OneDrive - Federal Aviation Administration\Desktop\RNAV Projects\PROJECT FILES\ZJX_ZMA VOR MON\KJAX BRSTL SID\KJAX BRSTL SID DME\KJAX [IFPA] BRSTL1 20230127_0907 EST\BRSTL_BAXLY\KJAX BRSTL1 SID BRSTL BAXLY 20230127_0907 EST.pdf
Procedure Name:	BRSTL1
Software: DmeDmePlugin:	7.0.2
Date/Time:	01/27/2023 09:07 EST
Databases:	DTED 0

Failures

No Failures

Warnings

No Warnings

Informational

No Informational

Notes For Flight Check

None

Flight Plan

Name	Type	Lat/Lon	Altitude (ft)	VNAV Mode	Ground Speed (kts)	Turn Type	Leg Type
BRSTL	WP	N30° 58' 58.55", W081° 58' 13.83"	5000	VNAV	200	FLY_BY	TF
BAXLY	WP	N31° 44' 50.32", W082° 20' 14.72"	5000	VNAV	200	FLY_BY	TF

Flyability

Flight Type:	SID
Selected Airport:	KJAX [IFPA]
Climb Gradient:	None assigned
Speeds:	130 at the Runway DER
	145 at the end of the VA or VI leg
	200 Ground Speed to 11000 FT
	240 Ground Speed to 18000 FT
	260 Ground Speed to 24000 FT
	340 Ground Speed above 24000 FT
Descent During a Turn:	Allowed
VNAV Mode:	Flight Plan

DME DME Assessment Results for BRSTL1 path BRSTL_BAXLY

DME/DME	
RNP:	RNP 2
Flight Mode:	Manual
Line of Sight (DTED Level 0 Max):	Evaluated
Inertial Drift:	Enabled
Initial Drift:	0.558 NM
INS Drift Rate:	8.0 NM/Hour
Range Mode:	OSV
RNP Edges:	Evaluated
Min DME Range:	3.0 NM
DME Types:	DME, VOR-DME, VORTAC, TACAN
DME Include Angles:	30 to 150
Critical DMEs:	Not Allowed
DoD Facilities:	Included
Foreign Facilities:	Not included
High DMEs:	Included
Low DMEs:	Included
Terminal DMEs:	Included
Flight Check DMEs:	Not selected
Higher Altitudes:	Not Evaluated
Near Maximum Altitude:	Not Evaluated
Automatic ESVs:	Not enabled
Disabled DMEs:	None

DME/DME (Continued)										
DMEs Used										
#	Name	Lat/Lon	MAGVAR	Range	Type	Source	Critical	Status	Time	Distance
1	SSI	N31° 03' 01.85", W081° 26' 45.47"	4.0 W	40	L	IFPA	NO	Enabled	23.5 %	23.5 %
2	TAY	N30° 30' 16.70", W082° 33' 10.45"	3.0 W	130	H	IFPA	NO	Enabled	13.7 %	13.7 %
3	AMG	N31° 32' 11.60", W082° 30' 29.12"	0.0 E	130	H	IFPA	NO	Enabled	60.4 %	60.4 %
4	AYS	N31° 16' 09.93", W082° 33' 23.20"	0.0 E	40	L	IFPA	NO	Enabled	67.8 %	67.8 %

Flight Check DME Selection						
Distance [NM]	Selected DMEs					Alternate
0.0	TAY	AYS	SSI			
4.9	TAY	AMG	AYS	SSI		
6.8	SSI	AMG				
8.1						
13.6	AMG	AYS				
35.7	SSI	AYS	AMG			
39.3	AMG	AYS				
40.4						

Inertial Drift Segments			
#	Start Location	End Location	Length [NM]
1	N31° 06' 29.73", W082° 01' 48.81"	N31° 11' 32.53", W082° 04' 13.43"	5.4435
2	N31° 36' 24.13", W082° 16' 09.98"	N31° 44' 50.32", W082° 20' 14.72"	9.1096

Available DMEs by Waypoints			
Waypoint Before	Waypoint After	DME List	Suggested DMEs
BRSTL	BAXLY	SSI, AYS, AMG, TAY	

DME DME Assessment Results for BRSTL1 path BRSTL_BAXLY

User Data Files

#	File Name
---	-----------

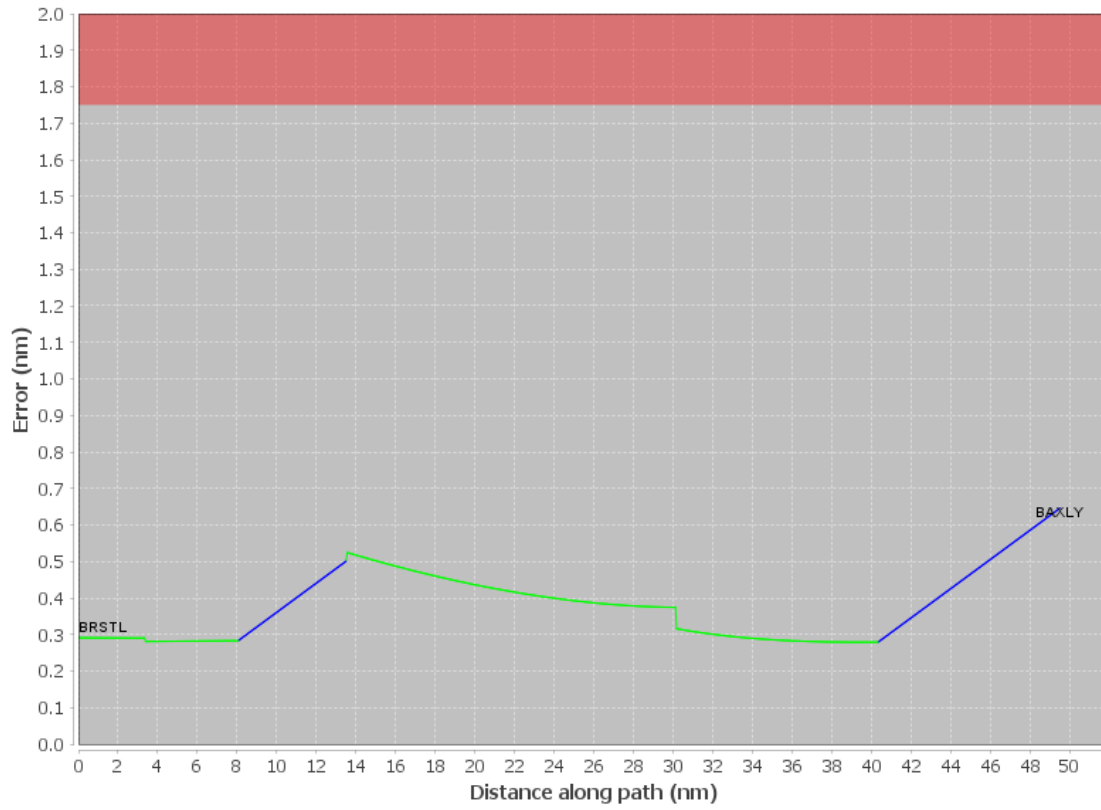
None

User DMEs

#	Name	Lat/Lon	MAGVAR	Range	Elevation [ft]	Frequency	Replaces	Status
1	ESV SSI FAA 712190-019 SSI [IFPA]	N31° 03' 01.85", W081° 26' 45.47"	4.0 W	40	5.9	109.8	ESV SSI FAA 712190-019	
	ESV:	Bearing [True]: 302.0° to 314.0° Bearing [Mag]: 306.0° to 318.0°				Arc Distance: Out to 55.0 NM Altitude: 4900.0 to 18100.0 ft		
2	TAY FAA 720642-28 TAY [IFPA]	N30° 30' 16.70", W082° 33' 10.45"	3.0 W	130	140	112.9	TAY FAA 720642-28	
	ESV:	Bearing [True]: 20.0° to 70.0° Bearing [Mag]: 23.0° to 73.0°				Arc Distance: Out to 48.0 NM Altitude: 3000.0 to 11000.0 ft		

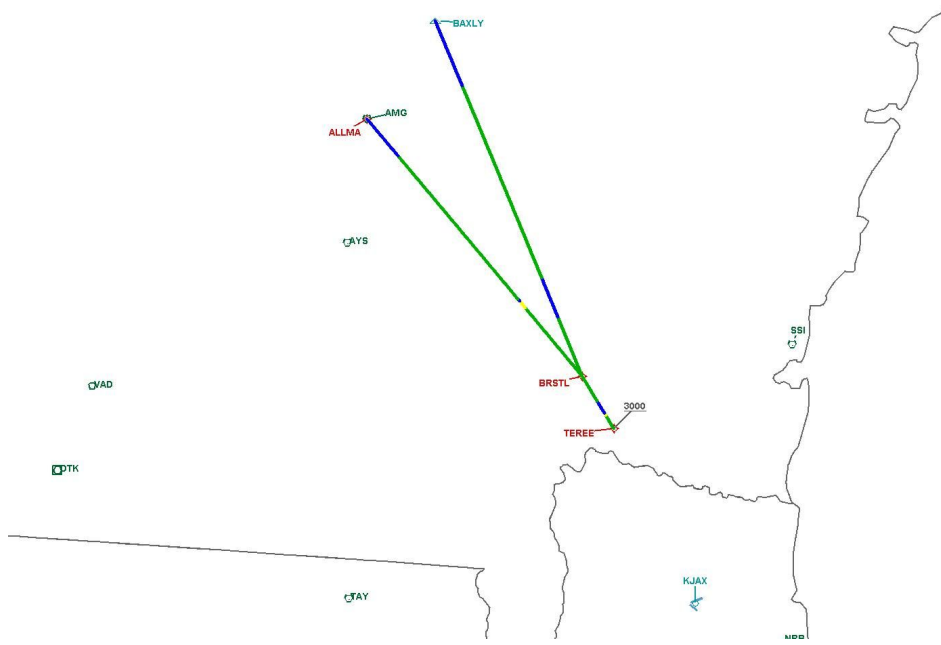
DME DME Assessment Results for BRSTL1 path BRSTL_BAXLY

DME Error



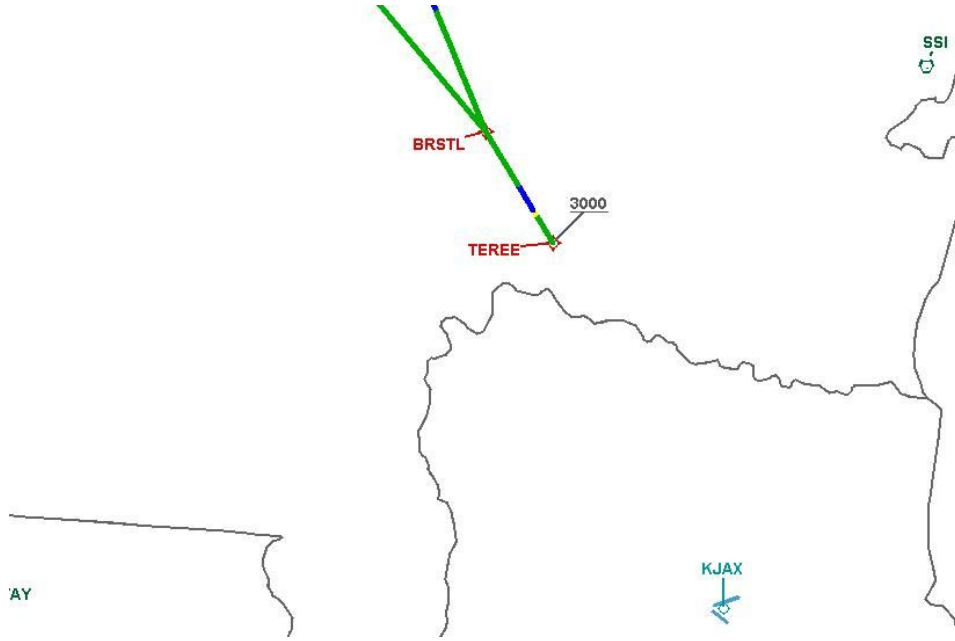
DME DME Assessment Results for BRSTL1 path BRSTL_BAXLY

Graphic Depiction 1



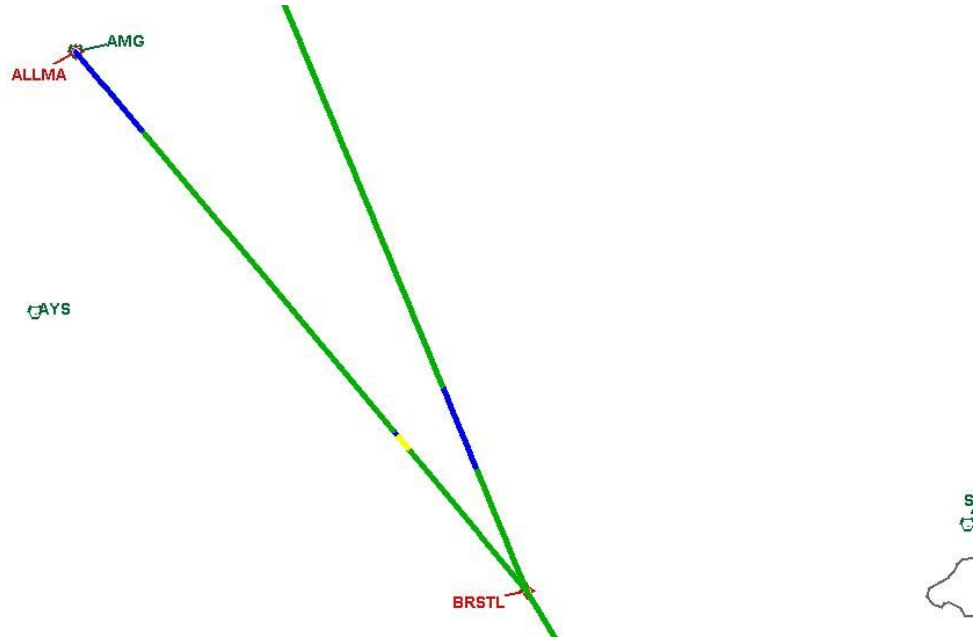
DME DME Assessment Results for BRSTL1 path BRSTL_BAXLY

Graphic Depiction 2



DME DME Assessment Results for BRSTL1 path BRSTL_BAXLY

Graphic Depiction 3



DME DME Assessment Results for BRSTL1 path BRSTL_BAXLY

Graphic Depiction 4

