

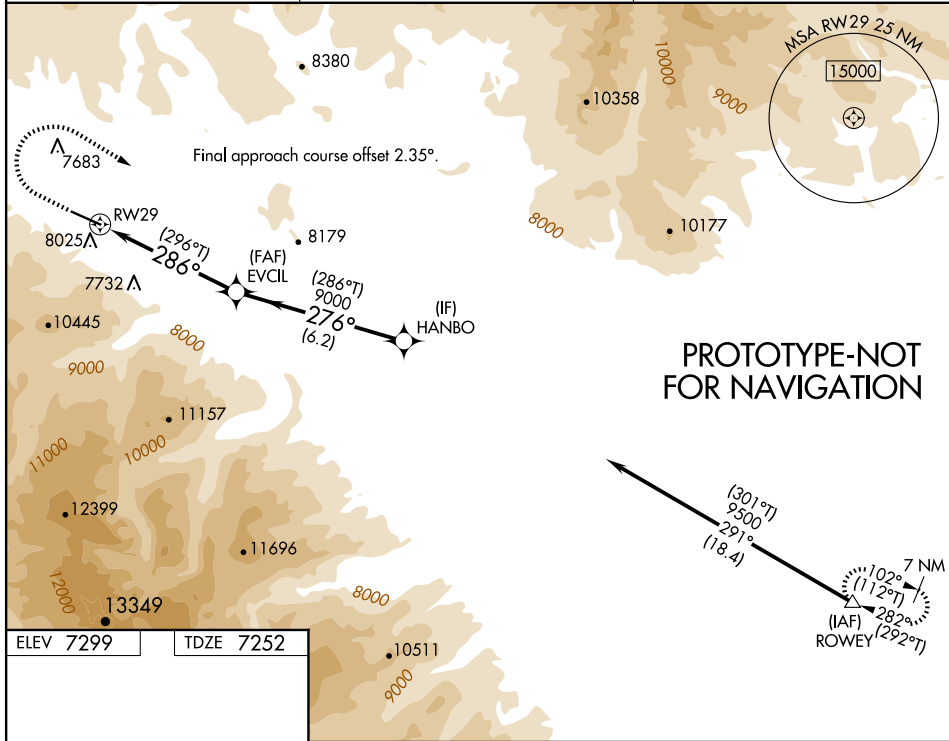
WAAS CH <b>70447</b> <b>W29A</b>	APP CRS <b>286°</b>	Rwy Idg TDZE Apt Elev	<b>6698</b> <b>7252</b> <b>7299</b>
--	------------------------	-----------------------------	---

# RNAV (GPS) RWY 29

DUBOIS MUNI (DUB)

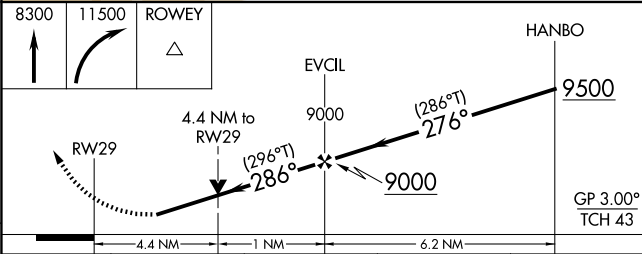
RNP APCH - GPS.	MISSED APPROACH: Climb to 8300 then climbing right turn to 11500 direct ROWEY and hold. *Missed approach requires minimum climb of 300 feet per NM to 9100.
<p>⚠ When local altimeter setting not received, procedure NA.                  ⚠ Rwy 29 helicopter visibility reduction below 3/4 SM NA.                  Procedure NA at night. Circling NA south of Rwy 11-29.</p>	

AWOS-3PT <b>118.275</b>	SALT LAKE CENTER <b>133.25 285.6</b>	CTAF <b>122.9</b>
----------------------------	---	----------------------



PROTOTYPE-NOT FOR NAVIGATION

ELEV 7299	TDZE 7252
-----------	-----------



CATEGORY	A	B	C	D
LPV DA*	8020-2½ 768 (800-2½)			NA
LNAV MDA	8700-1¼	8700-1½	8700-3	NA
	1448 (1500-1¼)	1448 (1500-1½)	1448 (1500-3)	
CIRCLING	8700-1¼	8700-1½	8800-3	NA
	1401 (1500-1¼)	1401 (1500-1½)	1501 (1600-3)	

REIL Rwy 29  
MIRL Rwy 11-29