

Flight Procedures Cover Page	Task Action: P-NOTAM	Task Type: IAP	Estimated Chart Date: 09/03/2026	APWS Task ID: C22391DF44A746869E154A005D88F975	APWS Project ID: E9014399DDB542A1BCFA38DB39BAF690
Procedure: RNAV (GPS) RWY 35 ORIG-D		Enroute: NO	Specialist: Johnson, Timothy		Agreement Number:
Airport ID: KSNL			Airport City: SHAWNEE		State: OK
Facility ID:	Facility Type:	Flight Inspection Remark Type:			

Procedure Comments:

Visibility Initiative (Garmin) - Update IAP visibility minimums IAW Order 8260.3, Chapter 3, Section 3-3. Visibility Minimums.

PROCESSED IAW TECHNICAL SUPPORT GROUP (AJF-17) MEMO DATED 07/07/2021, SUBJECT: GUIDANCE FOR PROCEDURAL CHANGES REQUIRING FLIGHT INSPECTION/VALIDATION.

CONTACT: CASEY HILL (405) 954-0624.



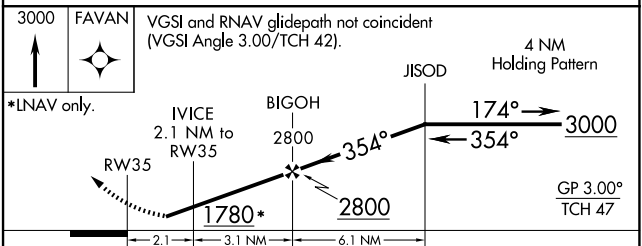
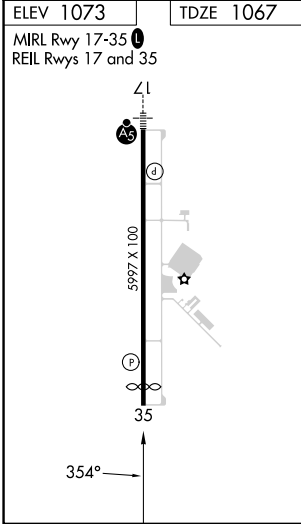
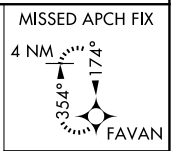
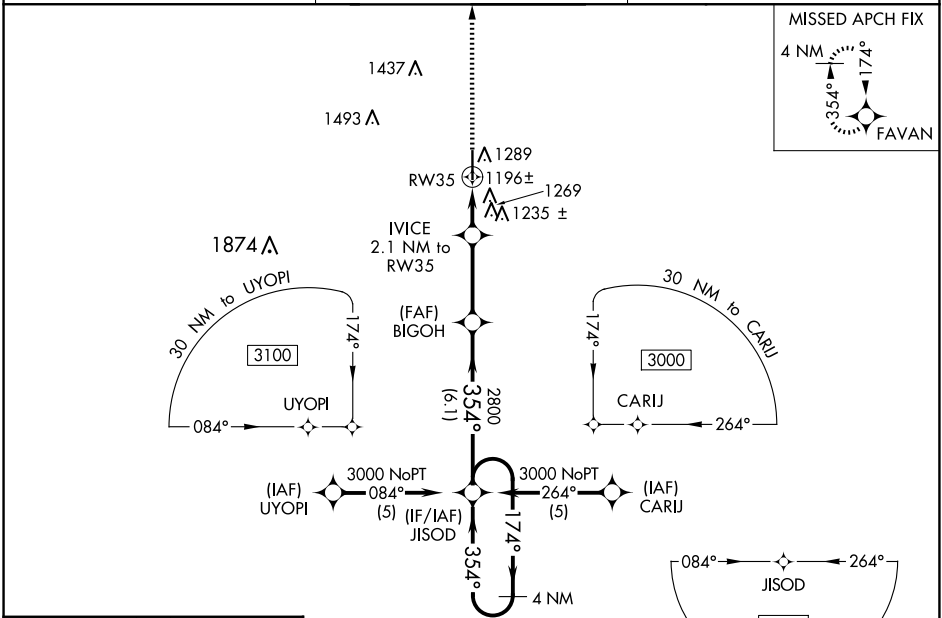
WAAS CH 72818 W35A	APP CRS 354°	Rwy Ldg TDZE Apt Elev	5593 1067 1073
--	------------------------	-----------------------------	---

RNAV (GPS) RWY 35
SHAWNEE RGNL (SNL)

⚠ Baro-VNAV NA when using Seminoole altimeter setting. For uncompensated Baro-VNAV systems, LNAV/VNAV NA below -17°C (2°F) or above 54°C (130°F). DME/DME RNP-0.3 NA. When local altimeter setting not received, use Seminoole altimeter setting: increase LPV DA to 1357 feet; increase LNAV/VNAV DA to 1605 feet and visibility ¼ SM; increase all MDAs 40 feet and visibility Cat C ¼ SM.

MISSED APPROACH:
Climb to 3000 direct FAVAN and hold.

AWOS-3PT 118.275	OKE CITY APP CON 120.45 288.325	UNICOM 122.7 (CTAF)
----------------------------	---	-------------------------------



CATEGORY	A	B	C	D
LPV DA		1317-1	250 (300-1)	NA
LNAV/VNAV DA		1565-1¾	498 (500-1¾)	NA
LNAV MDA	1520-1	453 (500-1)	1520-1¼ 453 (500-1¼)	NA
C CIRCLING	1600-1	527 (600-1)	1640-1½ 567 (600-1½)	NA

SC-1, 16 APR 2026 to 14 MAY 2026

SC-1, 16 APR 2026 to 14 MAY 2026