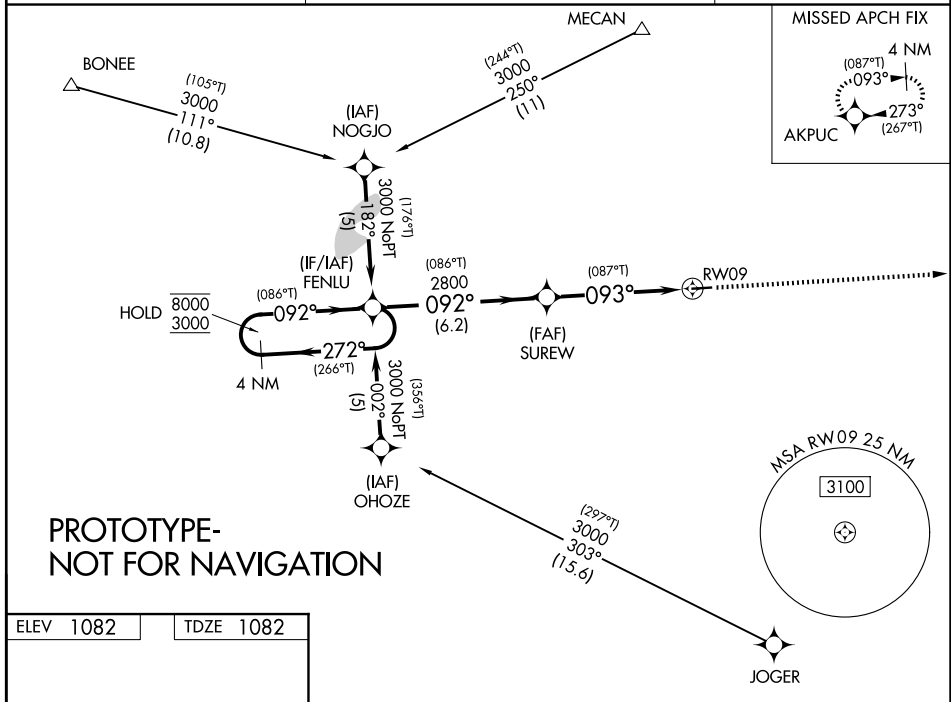


WAAS CH 53409 W09A	APP CRS 093°	Rwy Ldg TDZE Apt Elev 4000 1082 1082
--	------------------------	--

RNAV (GPS) RWY 9

MADISON COUNTY (UYF)

RNP APCH - GPS.		MISSED APPROACH: Climb to 3000 direct AKPUC and hold.
AWOS-3PT 120.85	COLUMBUS APP CON 134.0 279.6	UNICOM 123.0 (CTAF) 0



ELEV 1082	TDZE 1082
-----------	-----------

REIL Rwy 9 and 27
MIRL Rwy 9-27

4 NM Holding Pattern	VGSI and RNAV glidepath not coincident (VGSI Angle 3.00/TCH 30).		3000	AKPUC
CATEGORY	A	B	C	D
LPV DA	1332-1 250 (300-1)			
LNAV/VNAV DA	1548-1¾ 466 (500-1¾)			
LNAV MDA	1680-1	598 (600-1)	1680-1¾	598 (600-1¾)
CIRCLING	1680-1	598 (600-1)	1680-1¾ 598 (600-1¾)	1840-2½ 758 (800-2½)