

Flight Procedures Cover Page	Task Action: Abbreviated Amendment	Task Type: IAP	Estimated Chart Date: 03/19/2026	APWS Task ID: C2926389CA1844699B1606D01D759BF9	APWS Project ID: 6F1C8A83A5AA49618995002C46B14777
Procedure: RNAV (GPS) RWY 9L AMDT 1E		Enroute: NO	Specialist: Wilkinson, Christopher		Agreement Number:
Airport ID: KSBN			Airport City: SOUTH BEND		State: IN
Facility ID:	Facility Type:	Flight Inspection Remark Type:			

**Procedure Comments:**

UTILIZED PENDING DATA FOR KSBN AND RWYS.

CLEARs NOTAM FDC 5/4400.

PROCESSED IAW TECHNICAL SUPPORT GROUP (AJF-17) MEMO DATED 07/07/2021 GUIDANCE FOR PROCEDURAL CHANGES REQUIRING FLIGHT INSPECTION/VALIDATION.

CONTACT CASIMIR TABAKA, AJV-A430, 405-202-7857.



SOUTH BEND, INDIANA

AL-399 (FAA)

25219

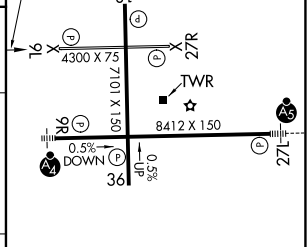
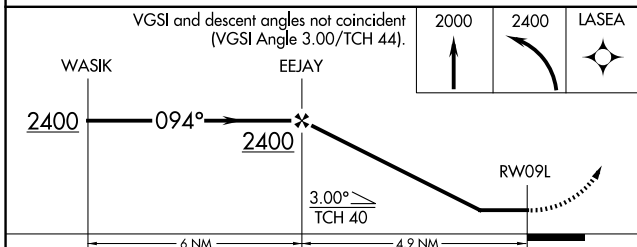
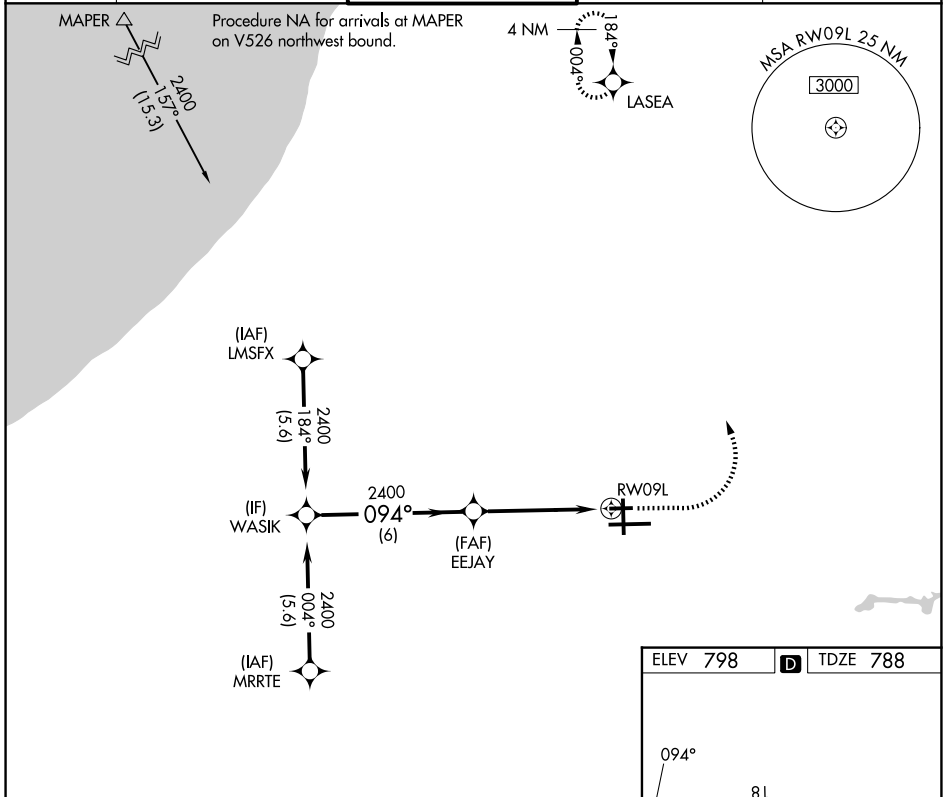
WAAS CH <b>70542</b> <b>W09A</b>	APP CRS <b>094°</b>	Rwy Ldg TDZE <b>788</b> Apt Elev <b>798</b>	<b>4300</b> <b>788</b> <b>798</b>
--	------------------------	---	---

**OLD**

**RNAV (GPS) RWY 9L**  
SOUTH BEND INTL (SBN)

RNP APCH - GPS.	MISSED APPROACH: Climb to 2000 then climbing left turn to 2400 direct LASEA and hold.
Rwy 9L helicopter visibility reduction below 3/4 SM NA. Circling Rwy 27R NA at night.	

ATIS <b>120.675</b>	SOUTH BEND APP CON * <b>118.55 257.8</b>	SOUTH BEND TOWER * <b>135.675 (CTAF) 0 257.8</b>	GND CON <b>121.7</b>	CLNC DEL <b>121.9</b>
------------------------	---	---	-------------------------	--------------------------



CATEGORY	A	B	C	D
LP MDA	1240-1	452 (500-1)	1240-1 3/8	452 (500-1 3/8)
LNAV MDA	1240-1	452 (500-1)	1240-1 3/8	452 (500-1 3/8)
CIRCLING	1280-1	482 (500-1)	1440-1 3/4	1500-2 1/4
			642 (700-1 3/4)	702 (800-2 1/4)

HIRL Rwy 9R-27L	
MIRL Rwy 18-36	
MIRL Rwy 9L-27R	

SOUTH BEND, INDIANA  
Amdt 1D 07SEP23

41°42'N-86°19'W

**SOUTH BEND INTL (SBN)**  
**RNAV (GPS) RWY 9L**

EC-2, 07 AUG 2025 to 04 SEP 2025

EC-2, 07 AUG 2025 to 04 SEP 2025