

## DME DME Assessment Results for FEVTA1 path FEVTA\_ELKOE

### Results Summary

Flyability:	Completed
DME/DME:	Completed - No Critical DMEs
Name:	Mark A-CTR Tellier
Project File:	C:\Users\Mark A-CTR Tellier\Desktop\Projects - TM\SMF\20250930_KSMF FEVTA1 - TM201.tgs
Output File:	C:\Users\Mark A-CTR Tellier\Desktop\Projects - TM\SMF\Submission Pkg\KSMF [IFPA] FEVTA1 20251002_0943 PDT\FEVTA_ELKOE\KSMF FEVTA1 RNAV STAR FEVTA ELKOE 20251002_0943 PDT.pdf
Procedure Name:	FEVTA1
Software: DmeDmePlugin:	7.5.1
Date/Time:	10/02/2025 09:43 PDT
Databases:	MITRE 3DEP 3 arcsec

### Failures

No Failures

### Warnings

No Warnings

### Informational

No Informational

### Notes For Flight Check

None

### Flight Plan

Name	Type	Lat/Lon	Altitude (ft)	VNAV Mode	Ground Speed (kts)	Turn Type	Leg Type
FEVTA	WP	N38° 08' 49.43", W121° 58' 13.04"	4000	VNAV	200	FLY_BY	TF
ISYOH	WP	N38° 21' 59.64", W121° 44' 12.97"	4000	VNAV	200	FLY_BY	TF
ELKOE	WP	N38° 36' 49.76", W121° 40' 55.18"	4000	VNAV	200	FLY_OVER	TF

### Flyability

Flight Type:	RNAV_STAR
Selected Airport:	KSMF [IFPA]
Climb Gradient:	None assigned
Speeds:	200 Ground Speed to 11000 FT
	240 Ground Speed to 18000 FT
	260 Ground Speed to 24000 FT
	340 Ground Speed above 24000 FT
Descent During a Turn:	Allowed
VNAV Mode:	Flight Plan

**DME DME Assessment Results for FEVTA1 path FEVTA\_ELKOE**

<b>DME/DME</b>	
RNP:	RNP 2
Flight Mode:	Manual
Line of Sight (DTED Level 0 Max):	Evaluated
Inertial Drift:	Enabled
Initial Drift:	0.558 NM
INS Drift Rate:	8.0 NM/Hour
Range Mode:	OSV
RNP Edges:	Evaluated
Min DME Range:	3.0 NM
DME Types:	DME, VOR-DME, VORTAC, TACAN
DME Include Angles:	30 to 150
Critical DMEs:	Allowed
DoD Facilities:	Included
Foreign Facilities:	Not included
High DMEs:	Included
Low DMEs:	Included
Terminal DMEs:	Included
Flight Check DMEs:	Not selected
Higher Altitudes:	Not Evaluated
Near Maximum Altitude:	Not Evaluated
Automatic ESVs:	Not enabled
Disabled DMEs:	None

<b>DME/DME (Continued)</b>										
<b>DMEs Used</b>										
#	Name	Lat/Lon	MAGVAR	Range	Type	Source	Critical	Status	Time	Distance
1	MOD	N37° 37' 38.55", W120° 57' 28.33"	17.0 E	130	DH		NO	Enabled	82.2 %	82.2 %
2	BAB	N39° 08' 05.26", W121° 26' 26.73"	16.0 E	40	L		NO	Enabled	18.8 %	18.8 %
3	SAU	N37° 51' 19.20", W122° 31' 21.91"	17.0 E	40	L		NO	Enabled	23.9 %	23.9 %
4	MYV	N39° 05' 55.12", W121° 34' 23.01"	16.0 E	130	DL		NO	Enabled	100 %	100 %
5	SWR	N39° 10' 49.16", W120° 16' 10.60"	16.0 E	130	DH		NO	Enabled	100 %	100 %
6	LIN	N38° 04' 28.49", W121° 00' 13.89"	17.0 E	130	DH		NO	Enabled	100 %	100 %
7	SGD	N38° 10' 45.70", W122° 22' 23.35"	17.0 E	130	H		NO	Enabled	45.4 %	45.4 %
8	SUU	N38° 14' 44.01", W121° 56' 42.27"	13.0 E	40	L		NO	Enabled	81.3 %	81.3 %
9	CCR	N38° 02' 41.71", W122° 02' 42.75"	17.0 E	25	T		NO	Enabled	53.3 %	53.3 %
10	SAC	N38° 26' 37.46", W121° 33' 05.95"	17.0 E	130	H		NO	Enabled	100 %	100 %
11	PYE	N38° 04' 47.12", W122° 52' 04.18"	17.0 E	130	DH		NO	Enabled	34.2 %	34.2 %
12	SFO	N37° 37' 10.15", W122° 22' 26.02"	17.0 E	40	L		NO	Enabled	6.2 %	6.2 %
13	ILA	N39° 04' 16.23", W122° 01' 38.17"	18.0 E	40	L		NO	Enabled	22.4 %	22.4 %

<b>Flight Check DME Selection</b>						
Distance [NM]	Selected DMEs					Alternate
0.0	SFO	MOD	CCR	SGD	SUU	LIN
2.0	MOD	CCR	LIN	SUU	MYV	SAC
2.5	MOD	CCR	MYV	LIN	SAC	SGD
14.7	MOD	SUU	SAC	CCR	MYV	LIN
17.2	MOD	SUU	SAC	MYV	LIN	SWR
26.5	SUU	SAC	LIN	BAB	SWR	ILA

## DME DME Assessment Results for FEVTA1 path FEVTA\_ELKOE

### Inertial Drift Segments

#	Start Location	End Location	Length [NM]

### Available DMEs by Waypoints

Waypoint Before	Waypoint After	DME List	Suggested DMEs
FEVTA	ISYOH	LIN, SGD, SUU, MOD, CCR, SAC, SAU, MYV, PYE, SFO, SWR	
ISYOH	ELKOE	LIN, SUU, MOD, BAB, SAC, MYV, SWR, ILA	

### User Data Files

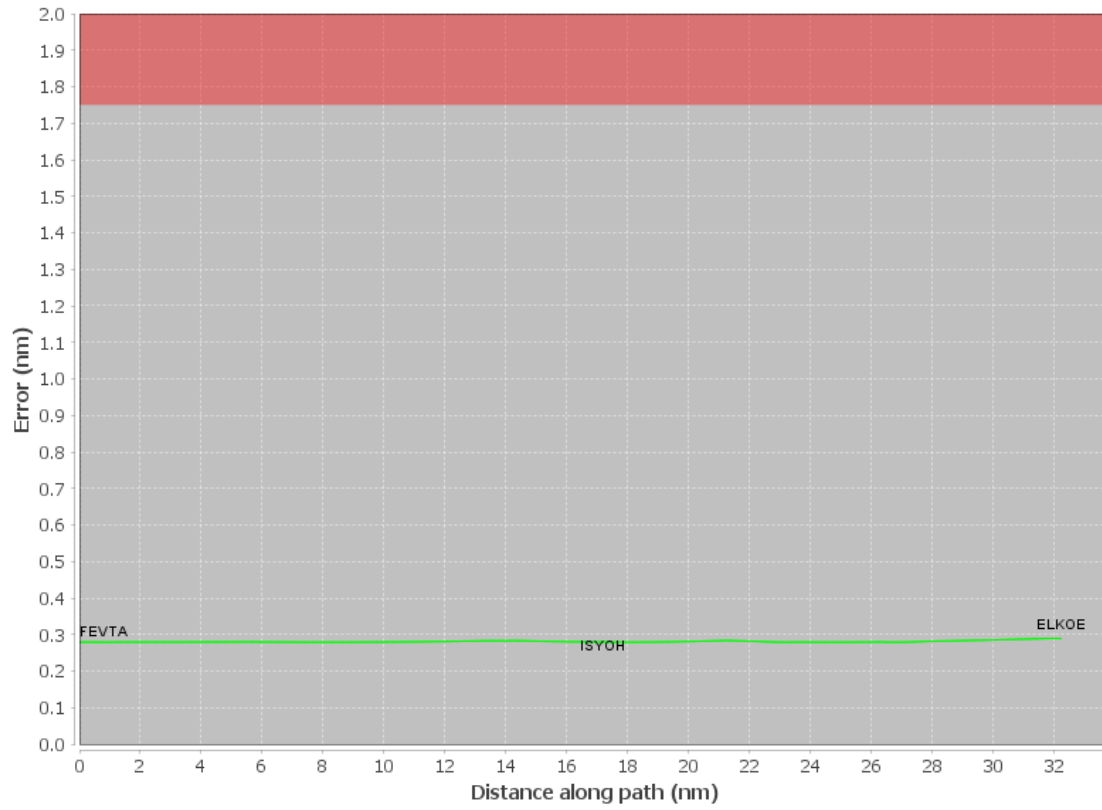
#	File Name
	None

### User DMEs

#	Name	Lat/Lon	MAGVAR	Range	Elevation [ft]	Frequency	Replaces	Status

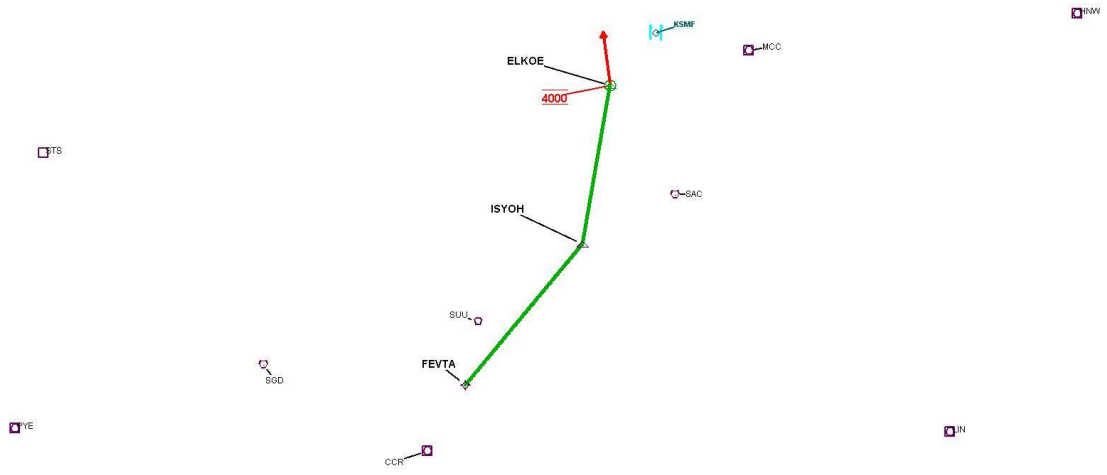
# DME DME Assessment Results for FEVTA1 path FEVTA\_ELKOE

## DME Error



# DME DME Assessment Results for FEVTA1 path FEVTA\_ELKOE

Graphic Depiction 1



**DME ESVs**

#	Name	Lat/Lon	MAGVAR	Range	Elevation [ft]	Frequency	Replaces	Status
None								