

WAAS CH <b>58319</b> <b>W34A</b>	APP CRS <b>344°</b>	Rwy Ldg TDZE Apt Elev	<b>6000</b> <b>100</b> <b>100</b>
--	------------------------	-----------------------------	---

# RNAV (GPS) RWY 34

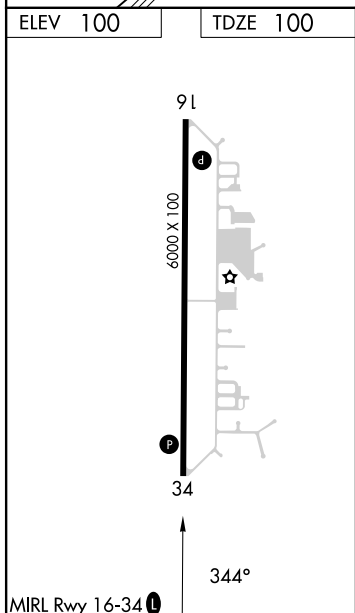
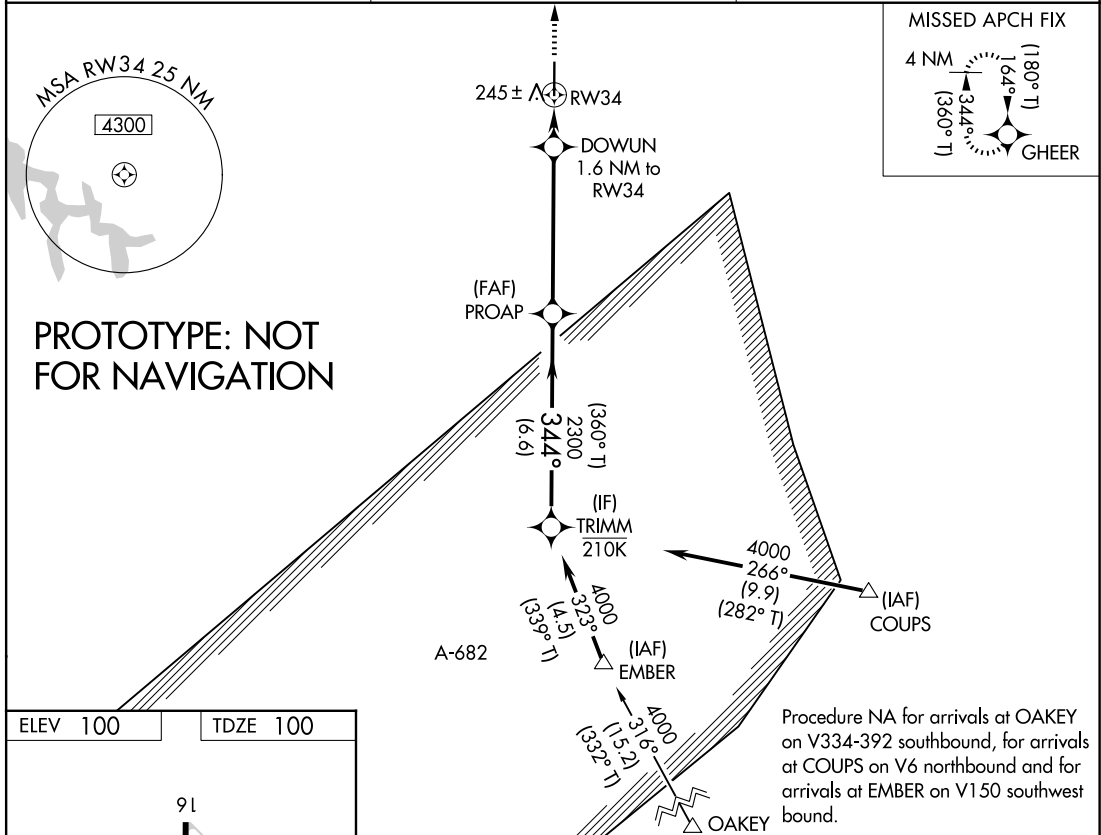
YOLO COUNTY (DWA)

RNP APCH - GPS.

▼ Rwy 34 helicopter visibility reduction below ¼ SM NA. Baro-VNAV NA when using SUU altimeter setting. For uncompensated Baro-VNAV systems, LNAV/VNAV NA below -15°C or above 54°C. When local altimeter setting not received, use SUU altimeter setting and increase LPV DA to 465 feet and all visibilities ¼ SM. Increase LNAV/VNAV DA to 550 feet and all visibilities ¼ SM. Increase all MDAs 60 feet and LNAV visibility Cat C/D ¼ SM.

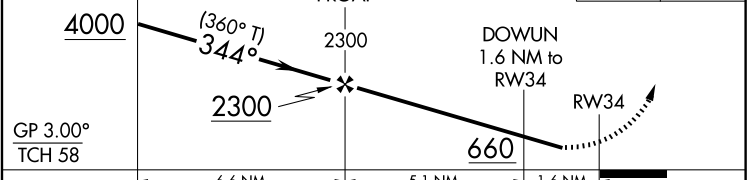
MISSED APPROACH: Climb to 3000 direct GHEER and hold, continue climb-in-hold to 3000.

AWOS-3P <b>125.775</b>	TRAVIS APP CON <b>126.6 281.45</b>	UNICOM <b>123.0 (CTAF) 0</b>
---------------------------	---------------------------------------	---------------------------------



Procedure NA for arrivals at OAKLEY on V334-392 southbound, for arrivals at COUPS on V6 northbound and for arrivals at EMBER on V150 southwest bound.

VGSI and RNAV glidepath not coincident (VGSI Angle 3.00/TCH 40).



CATEGORY	A	B	C	D
LPV DA	415-1	315 (400-1)		
LNAV/VNAV DA	500-1½	400 (400-1½)		
LNAV MDA	500-1	400 (400-1)	500-1½	400 (400-1½)

AUTOMATED AL-6512 RNAV (GPS) RWY 34

SW-2  
29 JAN 2026  
COMPILER: CG  
REVIEWER:  
DBL CHKR:  
EFF: FIG