

Flight Procedures Cover Page	Task Action: FLIGHT CHECK	Task Type: IAP	Estimated Chart Date: 05/14/2026	APWS Task ID: C3EDF33238F2460AA98C1C90FD4829B5	APWS Project ID: 9205AB070C81475CAC851F9EC60AE58C
Procedure: RNAV (GPS) RWY 26 AMDT 2		Enroute: NO	Specialist: Ulvestad, Arthur		Agreement Number:
Airport ID: I22			Airport City: WINCHESTER		State: IN
Facility ID:	Facility Type:	Flight Inspection Remark Type: New FC Slot			

Procedure Comments:
ACTIVE AIRPORT DATA USED.

REMOVED FEEDER SEGMENT MIE VOR/DME TO MOSEW.

CRC REMAINDER 0C8902FA.

KMZ:
I22_RNAV_(GPS)_RWY_26_AMDT_2 - FULL APPROACH
I22_RNAV_(GPS)_RWY_26_AMDT_2_1 - MISSED APP LPV PENETRATION

CONTACT: RAKE MCGRAW 405-954-8711



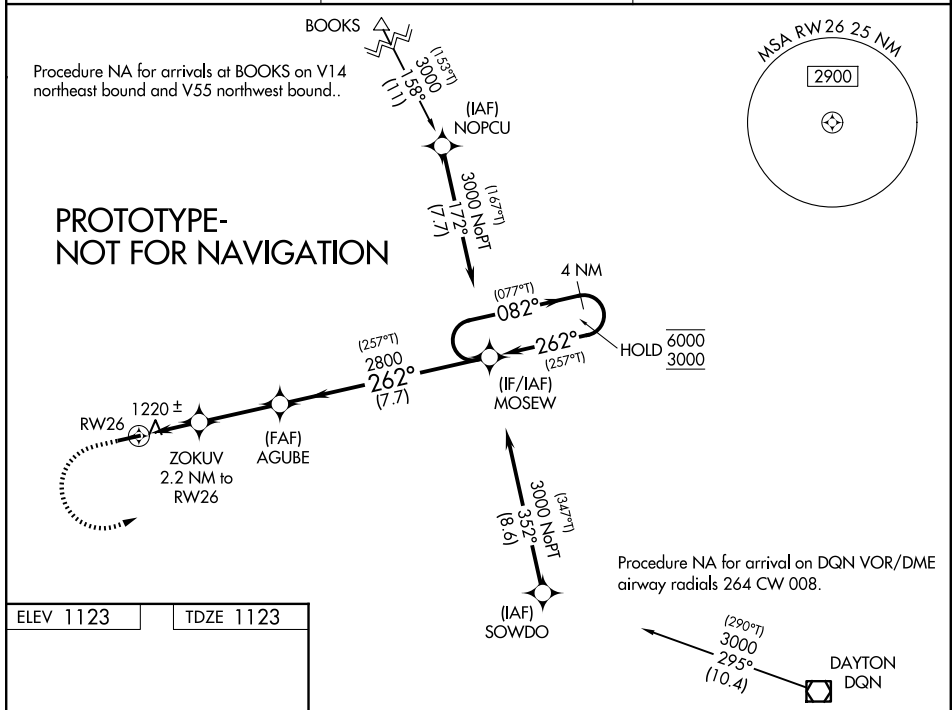
WAAS CH 78120 W26A	APP CRS 262°	Rwy Ldg TDZE Apt Elev 4300 1123 1123
--	------------------------	--

RNAV (GPS) RWY 26

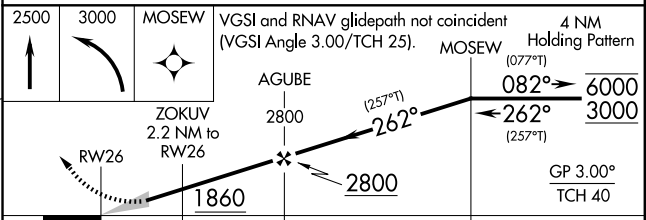
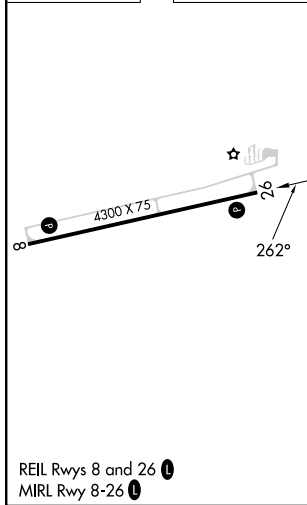
RANDOLPH COUNTY (I22)

RNP APCH - GPS.	<p>Baro-VNAV NA. Use VES altimeter setting, when not received, use MIE altimeter setting and increase LPV DA to 1514 feet and all visibilities 1/8 SM; increase LNAV/VNAV DA to 1559 feet and all visibilities 1/8 SM; increase all MDAs 20 feet and LNAV visibility Cat C 1/8 SM.</p>	<p>MISSED APPROACH: Climb to 2500 then climbing left turn to 3000 direct MOSEW and hold.</p>
-----------------	--	--

<p>VE5 AWOS-3PT 125.9</p>	<p>COLUMBUS APP CON 134.45 352.05</p>	<p>UNICOM 123.0 (CTAF) 0</p>
--------------------------------------	--	---



ELEV 1123	TDZE 1123
-----------	-----------



CATEGORY	A	B	C	D
LPV DA	1495-1 372 (400-1)			NA
LNAV/VNAV DA	1540-1 1/8 417 (500-1 1/8)			NA
LNAV MDA	1540-1	417 (500-1)	1540-1 1/8 417 (500-1 1/8)	NA
CIRCLING	1620-1	497 (500-1)	1820-2 697 (700-2)	NA

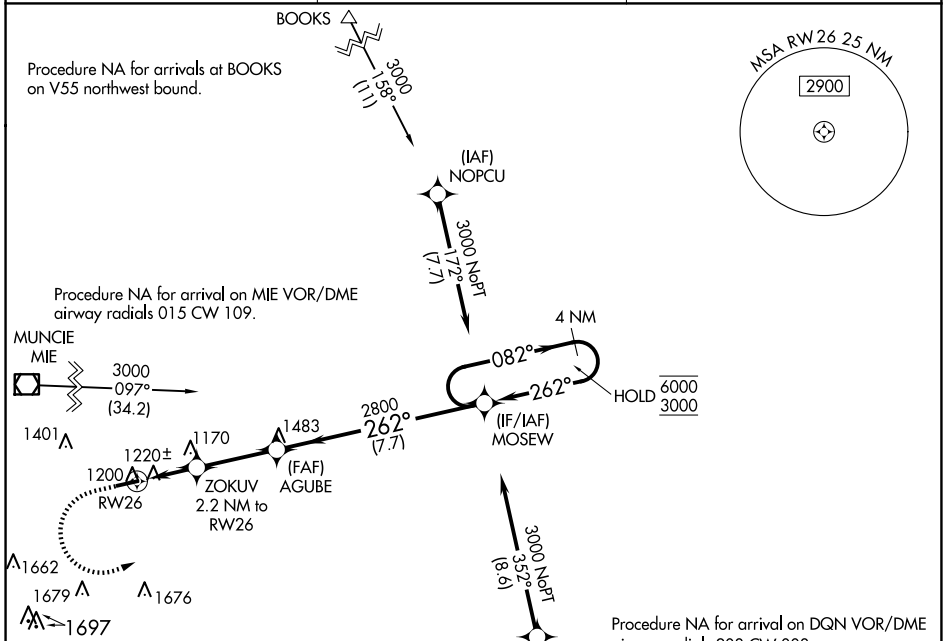
WAAS CH 78120 W26A	APP CRS 262°	Rwy Idg TDZE Apt Elev	4300 1123 1123
--	------------------------	-----------------------------	---

OLD

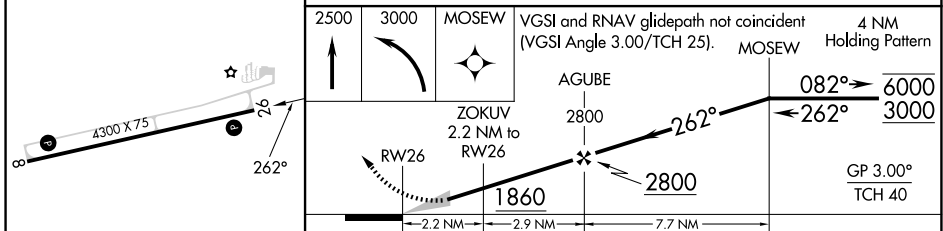
RNAV (GPS) RWY 26
RANDOLPH COUNTY (I22)

RNP APCH - GPS.	MISSED APPROACH: Climb to 2500 then climbing left turn to 3000 direct MOSEW and hold.
<p>Baro-VNAV NA. Use Versailles altimeter setting; when not received, use Muncie altimeter setting; increase all DA/MDA 20 feet and visibility LPV all Cats 1/8 SM.</p>	

VES AWOS-3PT 125.9	COLUMBUS APP CON 134.45 352.05	UNICOM 123.0 (CTAF)
------------------------------	--	-------------------------------



ELEV 1123	TDZE 1123
-----------	-----------



CATEGORY	A	B	C	D
LPV DA		1495-1	372 (400-1)	NA
LNAV/ VNAV DA		1449-1	326 (400-1)	NA
LNAV MDA	1540-1	417 (500-1)	1540-1 3/8 417 (500-1 3/8)	NA
CIRCLING	1620-1	497 (500-1)	1820-2 697 (700-2)	NA

EC-2, 12 JUN 2025 to 10 JUL 2025

EC-2, 12 JUN 2025 to 10 JUL 2025