

Flight Procedures Cover Page	Task Action: FLIGHT CHECK	Task Type: IAP	Estimated Chart Date: 03/19/2026	APWS Task ID: C44FDDBF9F584F5FBB356FBEF13A62DF	APWS Project ID: EE273883FCFF4D1A98DFBF52164C7228
Procedure: RNAV (GPS) RWY 8 AMDT 1A		Enroute: NO	Specialist: Johnson, Raymond		Agreement Number:
Airport ID: I17			Airport City: PIQUA		State: OH
Facility ID:	Facility Type:	Flight Inspection Remark Type: New FC Slot			

Procedure Comments:

PROCEDURE COMPLETED USING ACTIVE AIRNAV DATA.

KMZ FILES: I17_RNAV_(GPS)_RWY_08_AMDT_1A_1 - ALL SEGMENTS/FINAL MINIMUMS

KMZ FILES: I17_RNAV_(GPS)_RWY_08_AMDT_1A_2 - MA PENETRATION

CONTACT: RAKE MCGRAW, AJV-A422 MANAGER, 405.954.8711



WAAS CH 48845 W08A	APP CRS 081°	Rwy Ldg 3998 TDZE 993 Apt Elev 993
--	------------------------	---

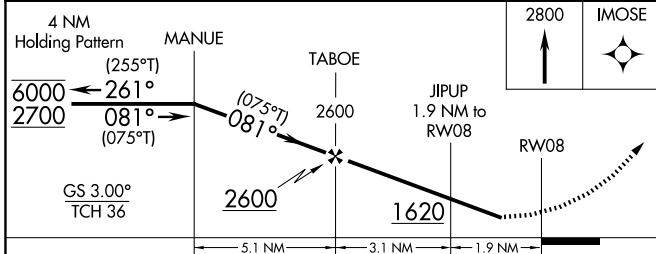
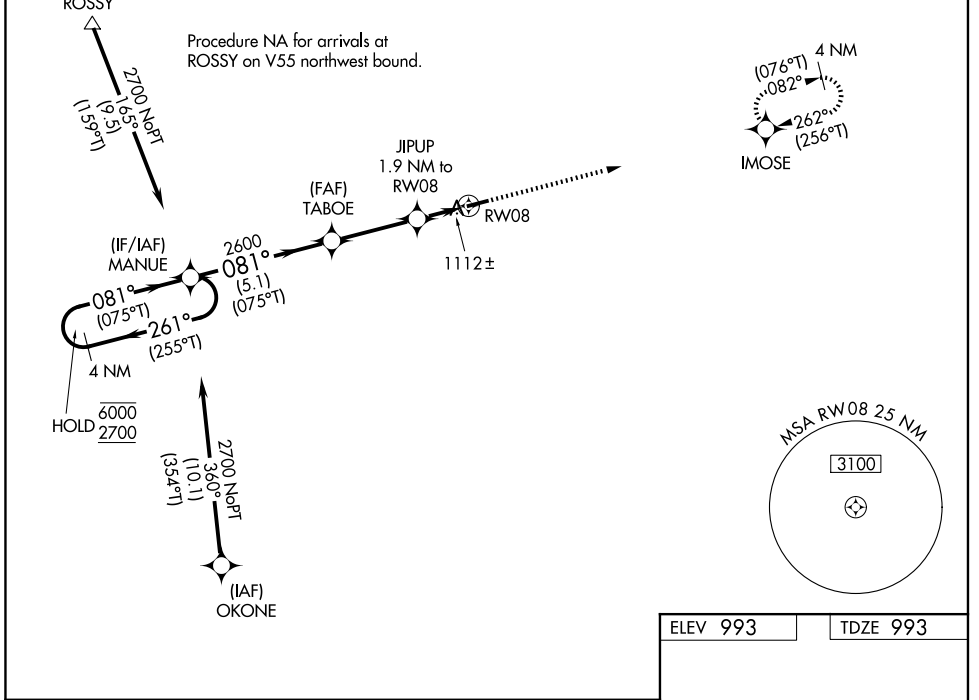
RNAV (GPS) RWY 8

PIQUA/HARTZELL FLD (I17)

RNP APCH - GPS.	MISSED APPROACH: Climb to 2800 direct IMOSE and hold.
⚠ Rwy 8 helicopter visibility reduction below 3/4 SM NA. ⚠ Baro-VNAV NA. Use VES altimeter setting.	

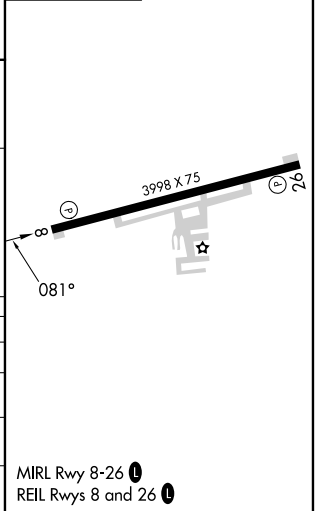
DAY ASOS 125.8	VES AWOS-3PT 125.9	COLUMBUS APP CON 134.45 294.5 352.05	UNICOM 123.0 (CTAF) 0
--------------------------	------------------------------	--	---------------------------------

PROTOTYPE-NOT FOR NAVIGATION



ELEV 993	TDZE 993
----------	----------

CATEGORY	A	B	C	D
LPV DA	1322-1	329 (400-1)		NA
LNAV/VNAV DA	1400-1 1/8	407 (500-1 1/8)		NA
LNAV MDA	1400-1	407 (500-1)	1400-1 1/8 407 (500-1 1/8)	NA
CIRCLING	1440-1 447 (500-1)	1560-1 567 (600-1)	1560-1 1/2 567 (600-1 1/2)	NA



PIQUA, OHIO

AL-5022 (P-A)

25051

WAAS CH 48845 W08A	APP CRS 081°	Rwy Idg TDZE 993 Apt Elev 993	3998 993 993
--	------------------------	---	---

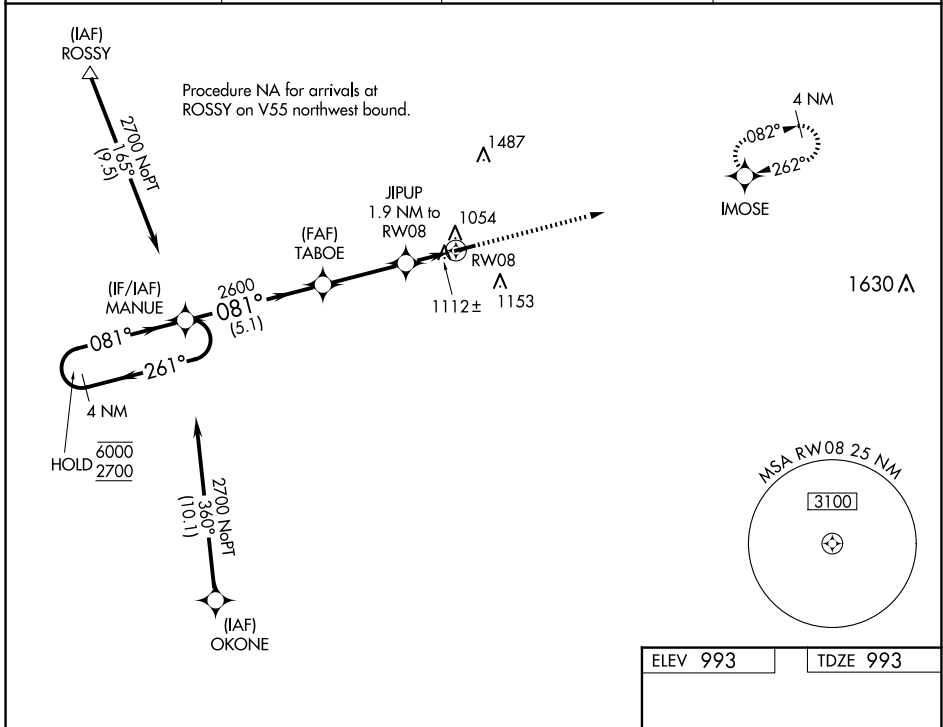
CURRENT

RNAV (GPS) RWY 8

PIQUA/HARTZELL FLD (I17)

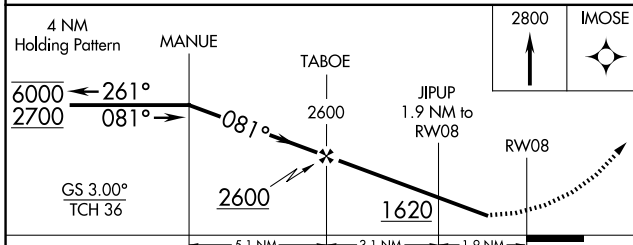
RNP APCH - GPS.	MISSED APPROACH: Climb to 2800 direct IMOSE and hold.
<p>V Rwy 8 helicopter visibility reduction below 3/4 SM NA.</p> <p>Δ NA Baro-VNAV NA. Use Versailles altimeter setting.</p>	

DAY ASOS 125.8	VES AWOS-3PT 125.9	COLUMBUS APP CON 134.45 294.5 352.05	UNICOM 123.0 (CTAF) 0
--------------------------	------------------------------	--	--



EC-2, 04 SEP 2025 to 02 OCT 2025

EC-2, 04 SEP 2025 to 02 OCT 2025



ELEV 993	TDZE 993
----------	----------

MIRL Rwy 8-26 **0**

REIL Rwy 8 and 26 **0**

CATEGORY	A	B	C	D
LPV DA	1322-1	329 (400-1)		NA
LNAV/VNAV DA	1400-1 1/8	407 (500-1 1/8)		NA
LNAV MDA	1400-1	407 (500-1)	1400-1 1/8 407 (500-1 1/8)	NA
C CIRCLING	1440-1 447 (500-1)	1540-1 547 (600-1)	1560-1 1/2 567 (600-1 1/2)	NA

PIQUA, OHIO
Amdt 1 15JUN23

40°10'N-84°19'W

RNAV (GPS) RWY 8