

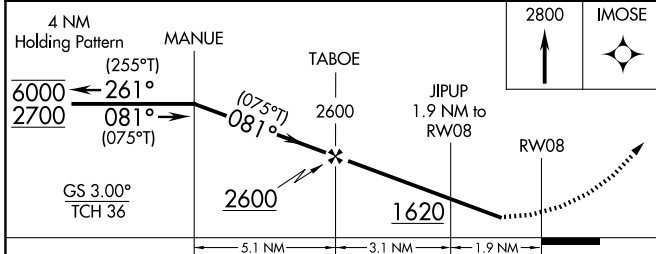
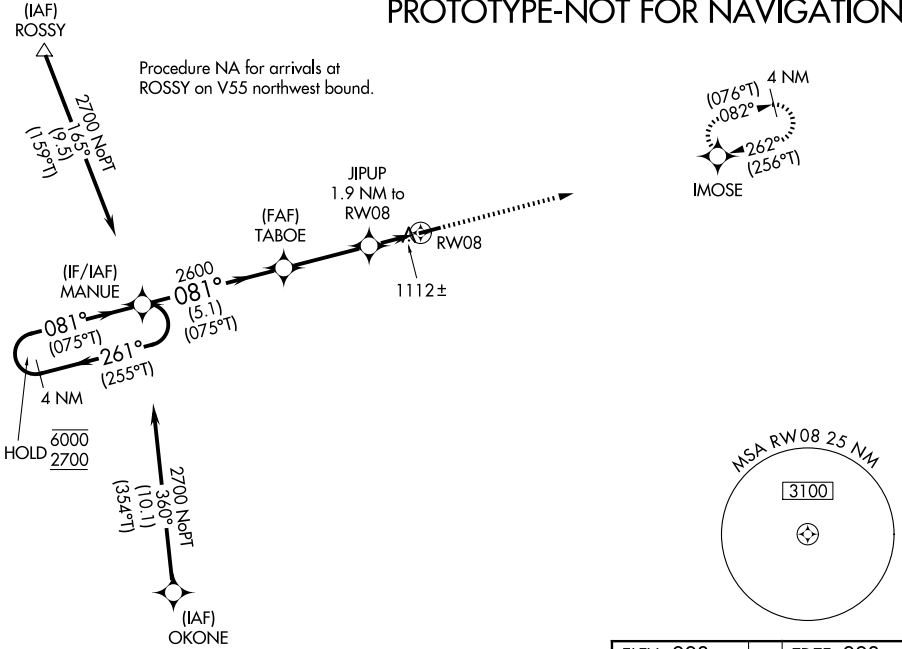
WAAS CH <b>48845</b> <b>W08A</b>	APP CRS <b>081°</b>	Rwy Ldg <b>3998</b> TDZE <b>993</b> Apt Elev <b>993</b>
--	------------------------	---

# RNAV (GPS) RWY 8

PIQUA/HARTZELL FLD (I17)

RNP APCH - GPS.		MISSED APPROACH: Climb to 2800 direct IMOSE and hold.	
<p><b>⚠</b> Rwy 8 helicopter visibility reduction below 3/4 SM NA.  <b>⚠</b> Baro-VNAV NA. Use VES altimeter setting.</p>		DAY ASOS <b>125.8</b>	VES AWOS-3PT <b>125.9</b>
		COLUMBUS APP CON <b>134.45 294.5 352.05</b>	UNICOM <b>123.0 (CTAF) 0</b>

## PROTOTYPE-NOT FOR NAVIGATION



ELEV 993	TDZE 993
<p>MIRL Rwy 8-26 0 REIL Rwys 8 and 26 0</p>	

CATEGORY	A	B	C	D
LPV DA	1322-1		329 (400-1)	NA
LNAV/VNAV DA	1400-1 1/8		407 (500-1 1/8)	NA
LNAV MDA	1400-1	407 (500-1)	1400-1 1/8 407 (500-1 1/8)	NA
CIRCLING	1440-1 447 (500-1)	1560-1 567 (600-1)	1560-1 1/2 567 (600-1 1/2)	NA