

Flight Procedures Cover Page	Task Action: FLIGHT CHECK	Task Type: IAP	Estimated Chart Date: 07/09/2026	APWS Task ID: C5FF26F301734919882557307B5425EA	APWS Project ID: 3DBC8C836FA3453E9C729EA7465F149F
Procedure: VOR RWY 32 AMDT 1A		Enroute: NO	Specialist: Smith, Bryant		Agreement Number:
Airport ID: PAHP			Airport City: HOOPER BAY		State: AK
Facility ID: HPB	Facility Type: VOR_DME	Flight Inspection Remark Type: New FC Slot			
<p>Procedure Comments: ACTIVE AIRNAV DATA USED.</p> <p>CONTACT: ROB HAMILTON A433 MANAGER, 405-954-4608</p>					

QUALITY
41
CHECKED

QUALITY
39
CHECKED

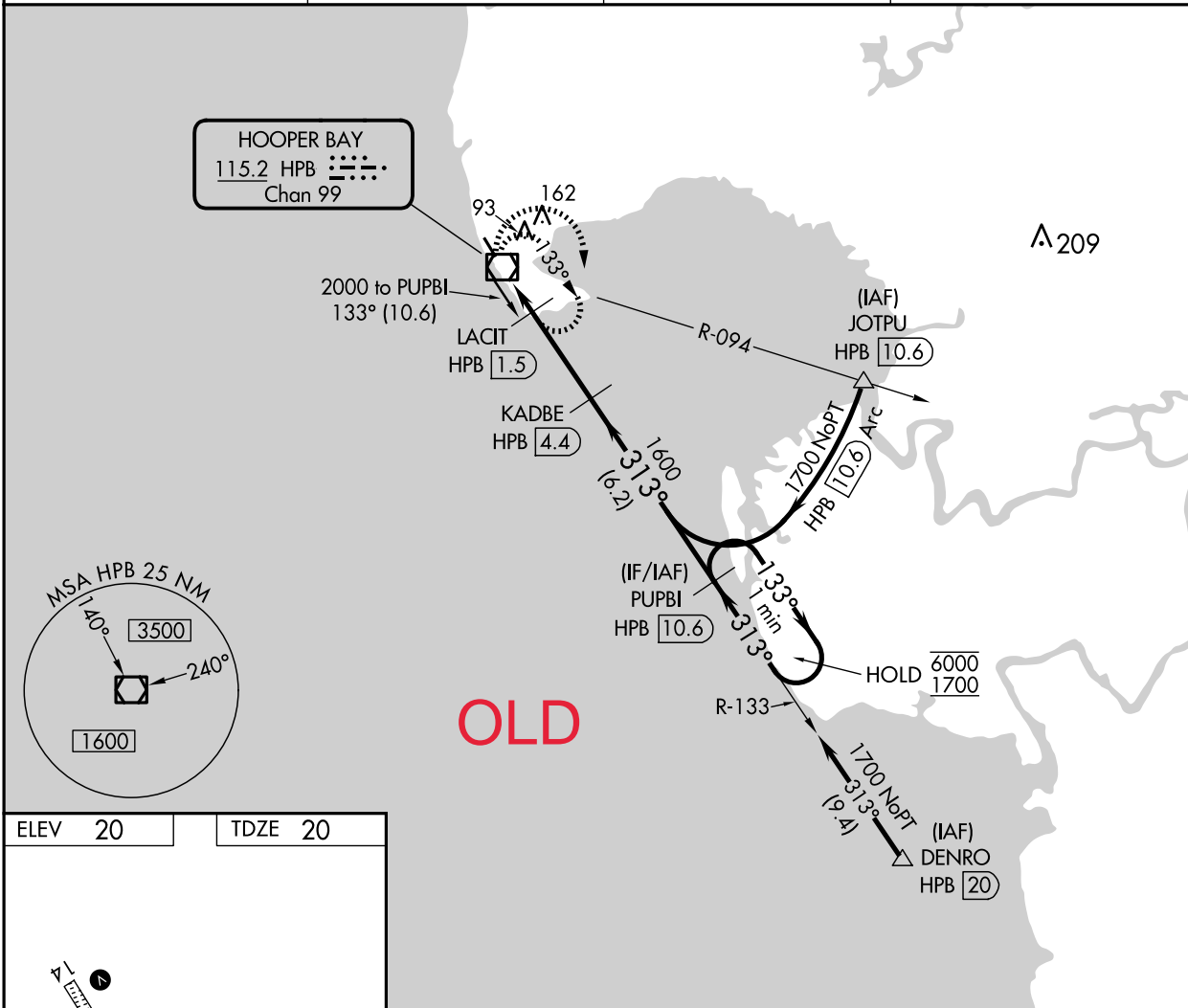
VOR/DME HPB 115.2 Chan 99	APP CRS 313°	Rwy Idg TDZE Apt Elev	3300 20 20
---	------------------------	-----------------------------	---------------------------------------

OLD

VOR RWY 32
HOOPER BAY (HPB) (PAHP)

DME required.	MISSED APPROACH: Climbing right turn to 2000 in HPB VOR/DME holding pattern.
▼ Rwy 32 helicopter visibility reduction below 1 SM NA. ▲ Straight-in Rwy 32 NA at night, Circling Rwy 32 NA at night.	

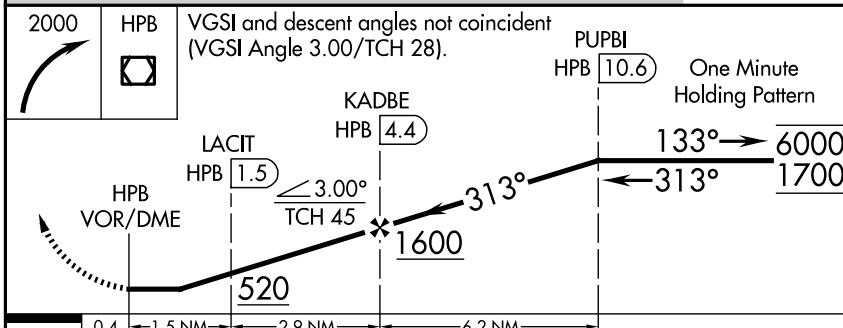
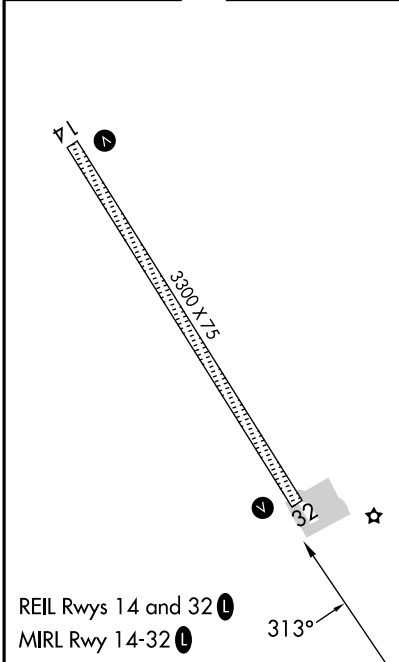
AWOS-3P 135.1	ANCHORAGE CENTER 124.5	KENAI RADIO 122.4	CTAF 123.0
-------------------------	----------------------------------	-----------------------------	----------------------



AK, 22 JAN 2026 to 19 MAR 2026

AK, 22 JAN 2026 to 19 MAR 2026

ELEV 20	TDZE 20
---------	---------



2000 HPB	VGSI and descent angles not coincident (VGSI Angle 3.00/TCH 28).		PUPBI HPB 10.6	One Minute Holding Pattern
	LACIT HPB 1.5	KADBE HPB 4.4		
	HPB VOR/DME	3.00° TCH 45	133° → 6000	← 313° 1700
	0.4	1.5 NM	2.9 NM	6.2 NM
CATEGORY	A	B	C	D
S-32	420-1	400 (400-1)	420-1½	400 (400-1½)
CIRCLING	420-1 400 (400-1)	480-1 460 (500-1)	480-1½ 460 (500-1½)	580-2 560 (600-2)