

Flight Procedures Cover Page	Task Action: FLIGHT CHECK	Task Type: IAP	Estimated Chart Date: 07/11/2024	APWS Task ID: C660BE48418C412495A0DE4CC3426033	APWS Project ID: F4E0054A04CD4E1A961CBDFD3AB2870E
Procedure: RNAV (GPS) RWY 3 ORIG		Enroute: NO	Specialist: Young, Silvia		Agreement Number:
Airport ID: KLUK			Airport City: CINCINNATI		State: OH
Facility ID:	Facility Type:	Flight Inspection Remark Type: New FC Slot			

Procedure Comments:

PENDING DATA USED FOR KLUK AIRPORT AND RWYS.

CONTACT CASIMIR TABAKA 405.202.7857



RNAV (GPS) RWY 3

CINCINNATI MUNI/LUNKEN FLD (LUK)

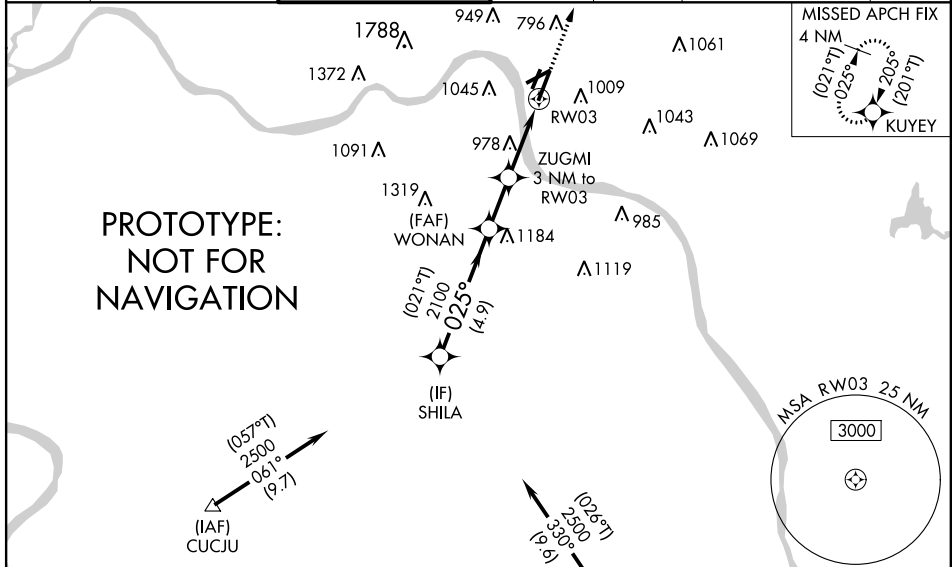
APP CRS	Rwy Idg	6101
025°	TDZE	481
	Apt Elev	482

RNP APCH - GPS.

⚠ Rwy 3 helicopter visibility reduction below 3/4 SM NA. Circling NA for Cat D north of Rwy 7-25. Circling Rwy 7 NA at night.

MISSED APPROACH: Climb to 2600 direct KUYEY and hold.

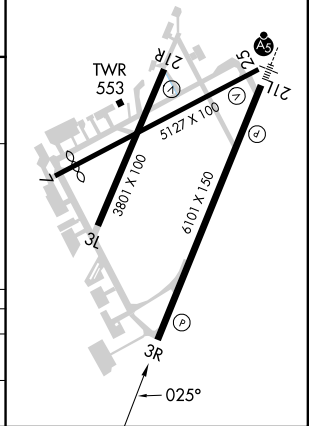
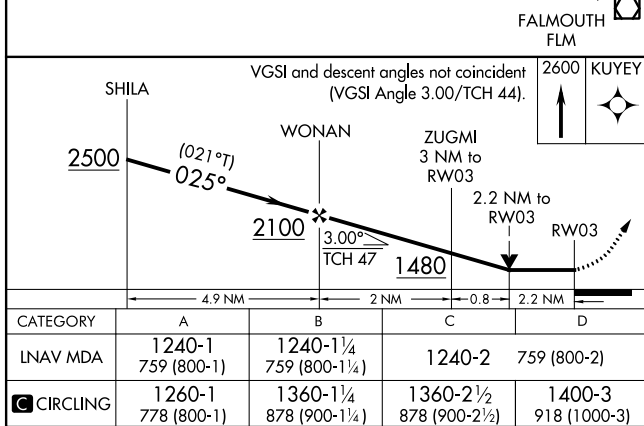
ATIS 123.6	CINCINNATI APP CON 121.0 254.25	LUNKEN TOWER ★ 118.7 (CTAF) 0 257.8	GND CON 121.9	CLNC DEL 121.9	CLNC DEL 124.9 (when twr closed)	UNICOM 122.95
----------------------	---	--	-------------------------	--------------------------	---	-------------------------



Procedure NA for arrivals at CUCJU on V97 southbound.

Procedure NA for arrivals at FLM VOR/DME on V517 southeast bound.

ELEV	482	TDZE	481
REIL Rwy 3			
HIRL Rwy 3-21			
MIRL Rwy 7-25			



**KLUK
CINCINNATI MUNI/LUNKEN FLD
CINCINNATI, OH
RNAV (GPS) RWY 3 ORIG
LNAV FINAL & CIRCLING
1:100,000**

**Circling CAT D
AAO (1100)**

**Circling CAT C
BUILDING (1054) 39-058486**

**Circling CAT B
TANK (1045) 21-000139**

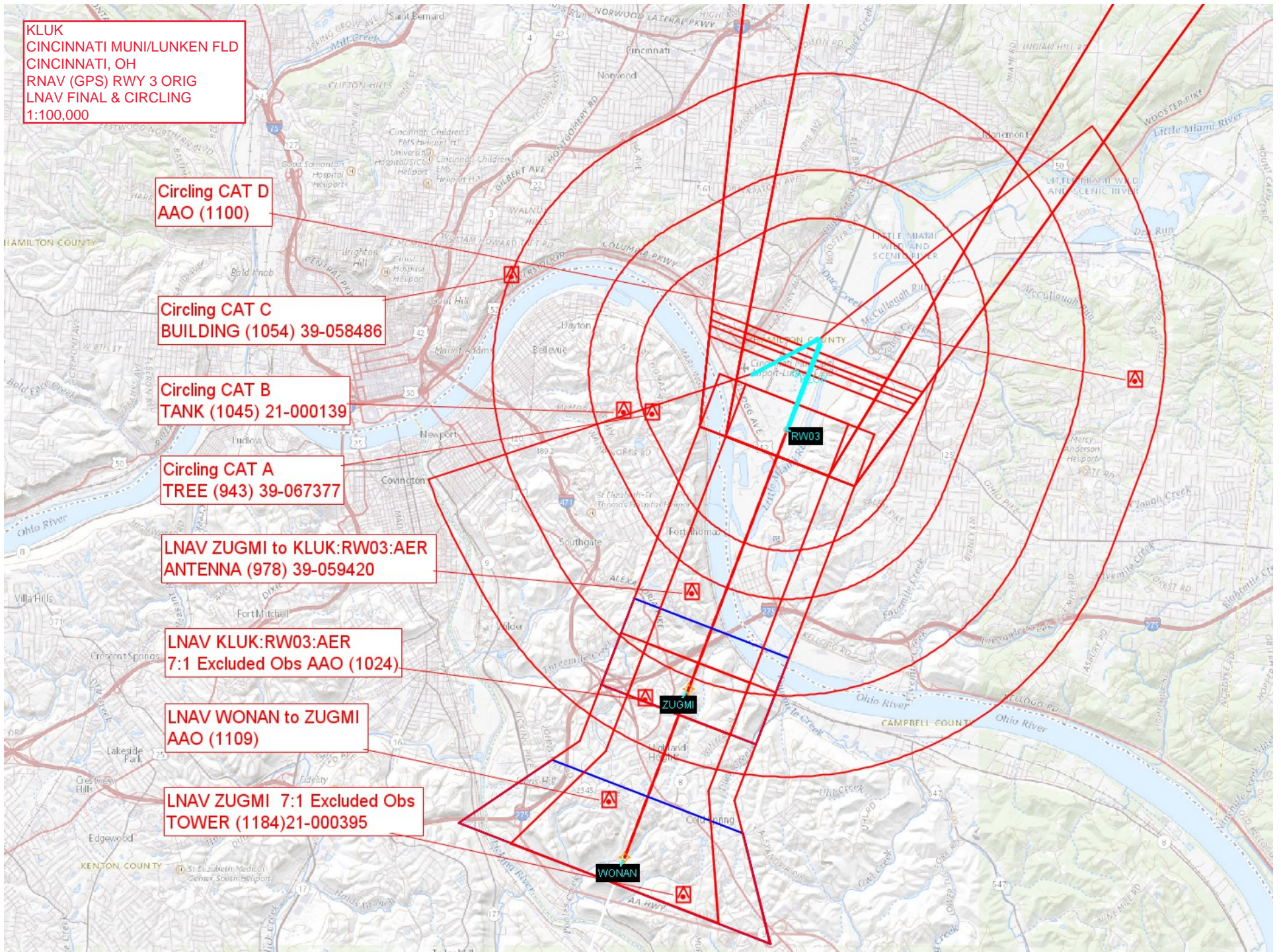
**Circling CAT A
TREE (943) 39-067377**

**LNAV ZUGMI to KLUK:RW03:AER
ANTENNA (978) 39-059420**

**LNAV KLUK:RW03:AER
7:1 Excluded Obs AAO (1024)**

**LNAV WONAN to ZUGMI
AAO (1109)**

**LNAV ZUGMI 7:1 Excluded Obs
TOWER (1184)21-000395**



KLUK
CINCINNATI MUNI/LUNKEN FLD
CINCINNATI, OH
RNAV (GPS) RWY 3 ORIG
FEEDER, IAFS, IF, FINAL, MA & HOLDING
1:500,000

KUYEY Holding
TOWER (1568) 39-000020

Missed Level Surface
TOWER (1177) 39-002449

LNAV ZUGMI to KLUK:RW03:AER
ANTENNA (978) 39-059420

LNAV KLUK:RW03:AER
7:1 Excluded Obs AAO (1024)

Initial CUCJU to SHILA
TOWER (1237) 21-001669

LNAV WONAN to ZUGMI
AAO (1109)

LNAV ZUGMI 7:1 Excluded Obs
TOWER (1184) 21-000395

Intermediate SHILA to WONAN
TOWER (1184) 21-000395

Initial LODLL to SHILA
TOWER (1172) 21-000837

Feeder FLM:VOR/DME to LODLL
AAO (1106)

