

Flight Procedures Cover Page	Task Action: Abbreviated Amendment	Task Type: IAP	Estimated Chart Date: 09/05/2024	APWS Task ID: C77CC3B31731427D909A24BAB446D4D4	APWS Project ID: BDA99E7D621A4CEA90453A03AA2706EF
Procedure: RNAV (GPS) RWY 17 AMDT 1D		Enroute: NO	Specialist: Johnson, Timothy		Agreement Number:
Airport ID: KCKV			Airport City: CLARKSVILLE		State: TN
Facility ID:	Facility Type:	Flight Inspection Remark Type:			

Procedure Comments:
ACTIVE DATA USED.

Processed IAW Technical Support Group (AJF-17) Memo dated 07/07/2021, Guidance for Procedural Changes Requiring Flight Inspection/Validation.

CANCELS T-NOTAM 2/7815.

CONTACT: DAVID DANNER (405)-954-5077.



OLD

CLARKSVILLE, TENNESSEE

AL-5311 (FAA)

23278

WAAS CH 69439 W17A	APP CRS 167°	Rwy Idg TDZE 5999 541 Apt Elev 550
--	------------------------	---

RNAV (GPS) RWY 17

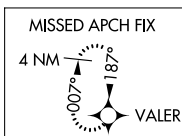
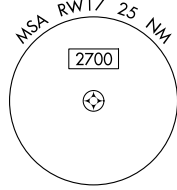
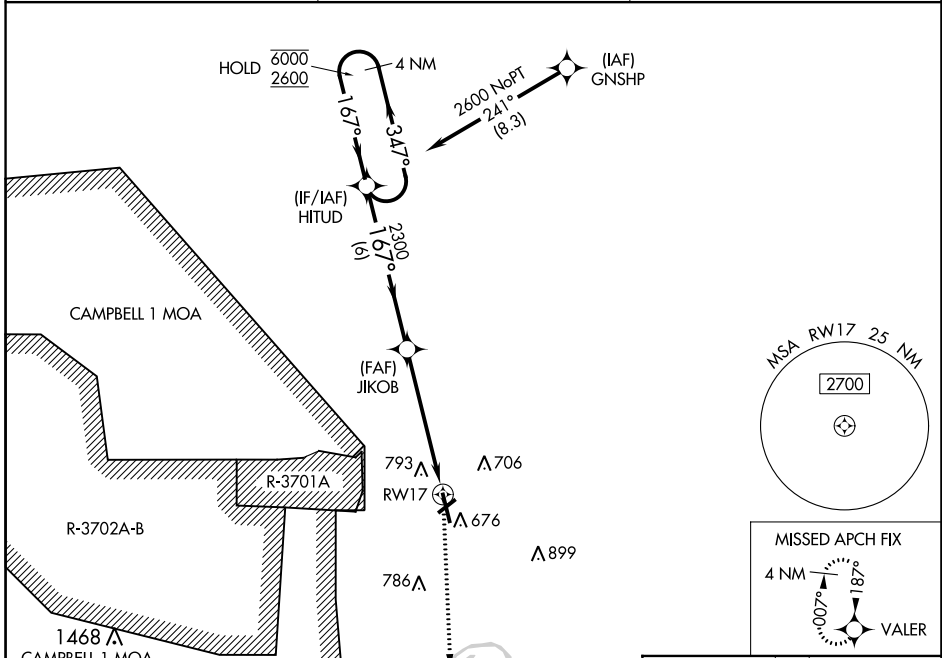
OUTLAW FLD (CKV)

RNP APCH - GPS.

⚠ Circling NA W of Rwy 17-35. Circling Rwy 23 NA at night. Rwy 17 helicopter visibility reduction below 3/4 SM NA. For uncompensated Baro-VNAV systems, LNAV/VNAV NA below -12°C or above 54°C.

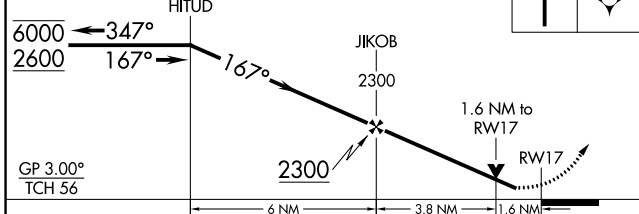
⚠ MISSED APPROACH: Climb to 3000 direct VALER and hold.

ASOS 134.575	CAMPBELL APP CON 134.35 307.025	UNICOM 122.8 (CTAF) 0
------------------------	---	---------------------------------

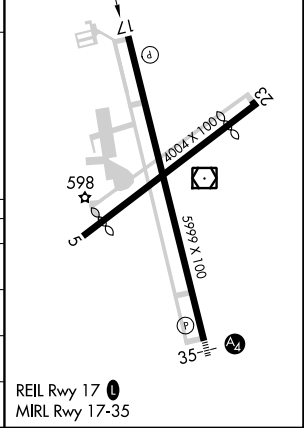


4 NM Holding Pattern VGSI and RNAV glidepath not coincident (VGSI Angle 3.00/TCH 22).

3000 VALER



ELEV 550	TDZE 541
----------	----------



CATEGORY	A	B	C	D
LPV DA	823-7/8		282 (300-7/8)	
LNAV/VNAV DA	991-13/8		450 (500-13/8)	
LNAV MDA	1060-1	519 (600-1)	1060-13/8	519 (600-13/8)
C CIRCLING	1060-1	510 (600-1)	1060-11/2	1200-2 650 (700-2)

REIL Rwy 17 0
MIRL Rwy 17-35

CLARKSVILLE, TENNESSEE
Amdt 1C 11AUG22

36°37'N-87°25'W

OUTLAW FLD (CKV) RNAV (GPS) RWY 17

SE-1, 05 OCT 2023 to 02 NOV 2023

SE-1, 05 OCT 2023 to 02 NOV 2023