

Flight Procedures Cover Page	Task Action: FLIGHT CHECK	Task Type: IAP	Estimated Chart Date: 10/02/2025	APWS Task ID: C85752D4310741E2AE27BBB38A9CF0C8	APWS Project ID: 60789AAA3D9646BD92C779BC9934A884
Procedure: ILS OR LOC RWY 1 AMDT 32		Enroute: NO	Specialist: Smith, Bryant		Agreement Number:
Airport ID: KGMU			Airport City: GREENVILLE		State: SC
Facility ID: SPA	Facility Type: VORTAC	Flight Inspection Remark Type: New FC Slot			
<p>Procedure Comments: SPA VORTAC PENDING AIRNAV DATA USED</p> <p>CONTACT: ERIC SUSKI A431 MANAGER, 405-954-7331</p>					



LOC I-GMU 109.7	APP CRS 006°	Rwy Idg 5393 TDZE 1015 Apt Elev 1048
---------------------------	------------------------	--

ILS or LOC RWY 1
GREENVILLE DOWNTOWN (GMU)

RADAR required for procedure entry at SPRKI.

ADF required.

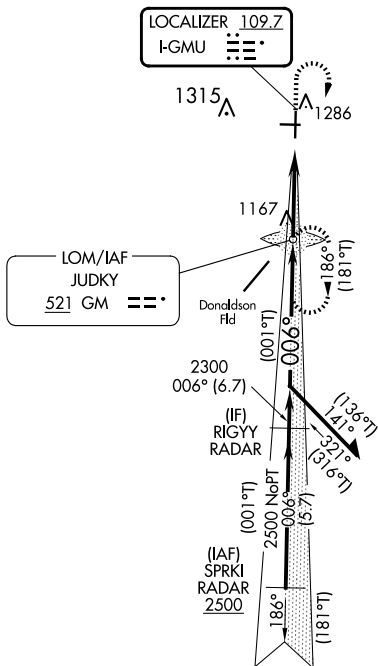
⚠ Inop table does not apply to S-ILS 1 all Cats. For inop ALS, increase S-LOC 1 visibility Cats C/D to 1 1/8 SM. When local altimeter setting not received, use GSP altimeter setting and increase DA to 1248, increase all MDAs 40 feet and Circling Cat C visibility 1/4 SM. For inop ALS when using GSP altimeter setting, increase S-LOC 1 visibility Cat C/D to 1 1/8 SM. When using GSP altimeter setting, inop table does not apply to S-ILS 1 all Cats.

MALSF

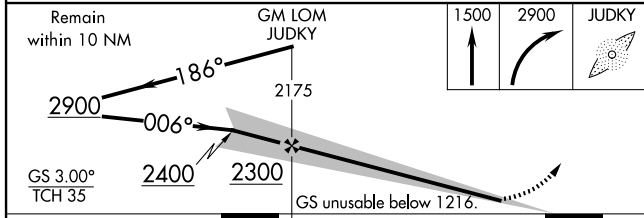
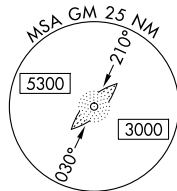
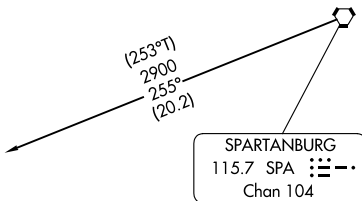


MISSED APPROACH: Climb to 1500 then climbing right turn to 2900 direct JUDKY LOM and hold, continue climb-in-hold to 2900.

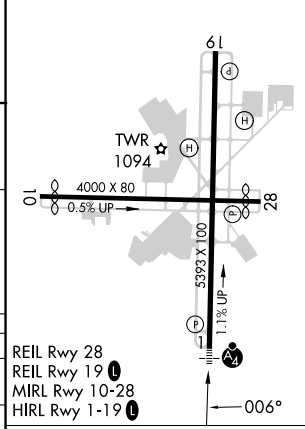
ATIS 127.075	GREER APP CON* 118.8 270.275	GREENVILLE TOWER* 119.9 (CTAF) 257.7	GND CON 121.25	UNICOM 122.95
------------------------	--	--	--------------------------	-------------------------



PROTOTYPE-NOT FOR NAVIGATION

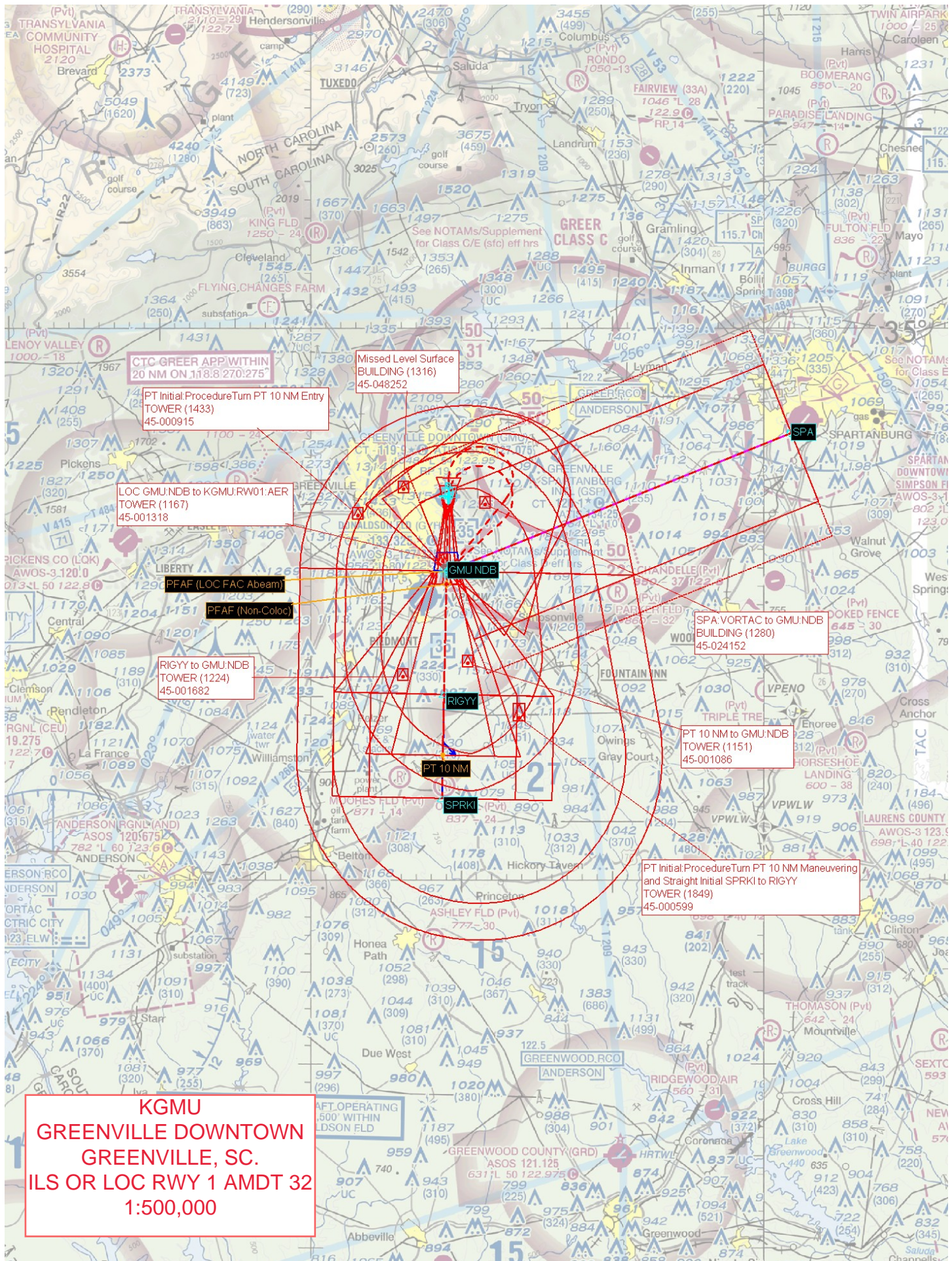


ELEV 1048 **D** TDZE 1015



CATEGORY	A	B	C	D
S-ILS 1		1216-3/4	201 (200-3/4)	
S-LOC 1	1420-3/4	405 (400-3/4)	1420-1	405 (400-1)
CIRCLING	1620-1	572 (600-1)	1780-2 732 (800-2)	1860-2 3/4 812 (900-2 3/4)

FAF to MAP 3.6 NM					
Knots	60	90	120	150	180
Min:Sec	3:36	2:24	1:48	1:26	1:12



CTC GREER APP WITHIN 20 NM ON 118.8:270:275

Missed Level Surface BUILDING (1316) 45-048252

PT Initial Procedure Turn PT 10 NM Entry TOWER (1433) 45-000915

LOC GMU/NDB to KGMU/RW01:AER TOWER (1167) 45-001318

PPFAF (LOC FAC Abeam)

PPFAF (Non-Coloc)

RIGYY to GMU/NDB TOWER (1224) 45-001682

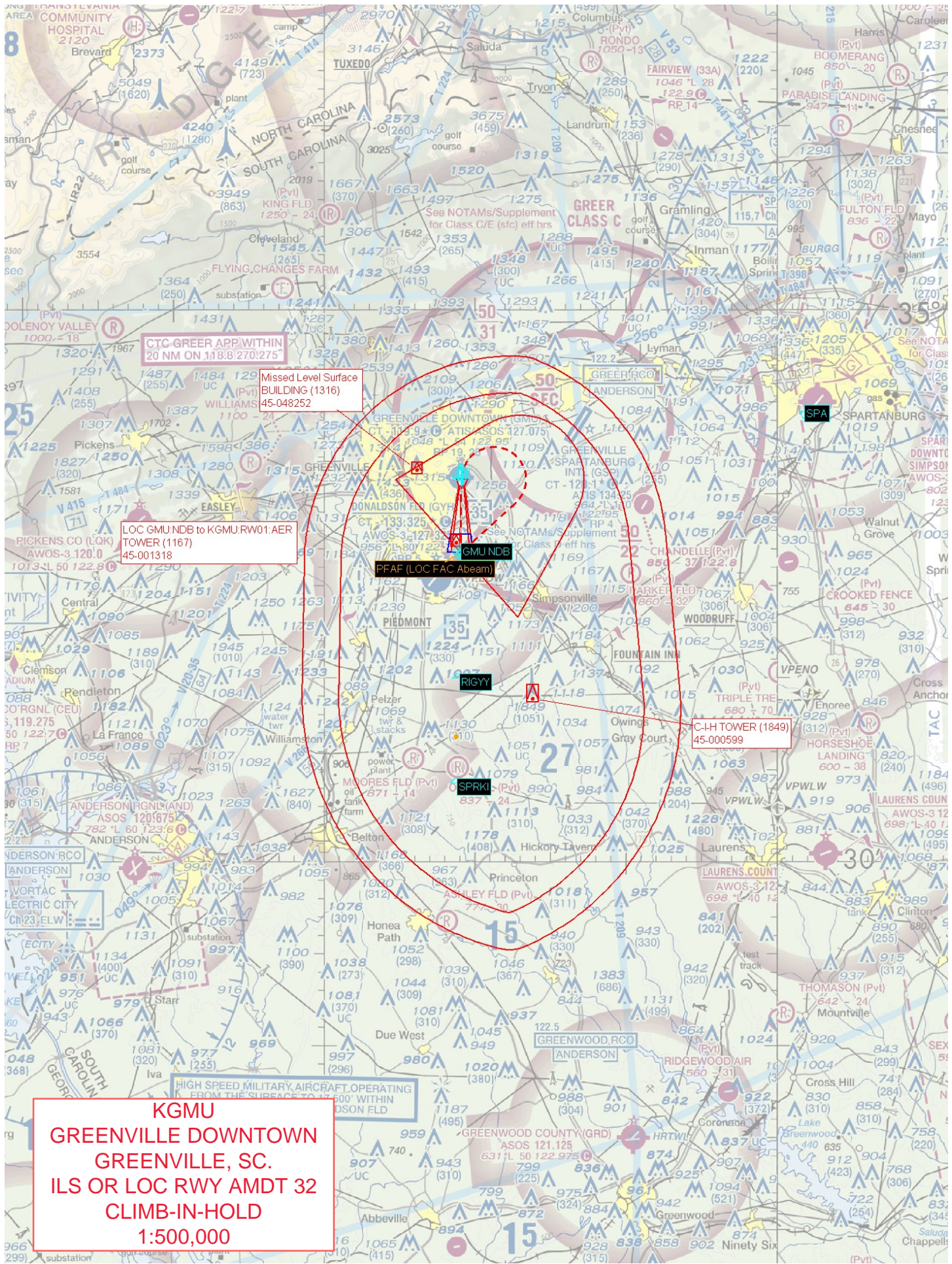
PT 10 NM

SPA VORTAC to GMU/NDB BUILDING (1280) 45-024152

PT 10 NM to GMU/NDB TOWER (1151) 45-001086

PT Initial Procedure Turn PT 10 NM Maneuvering and Straight Initial SPRKI to RIGYY TOWER (1849) 45-000599

KGMU
GREENVILLE DOWNTOWN
GREENVILLE, SC.
ILS OR LOC RWY 1 AMDT 32
1:500,000



CTC GREER APP WITHIN
20 NM ON 118.8/270/275

Missed Level Surface
BUILDING (1316)
45-048252

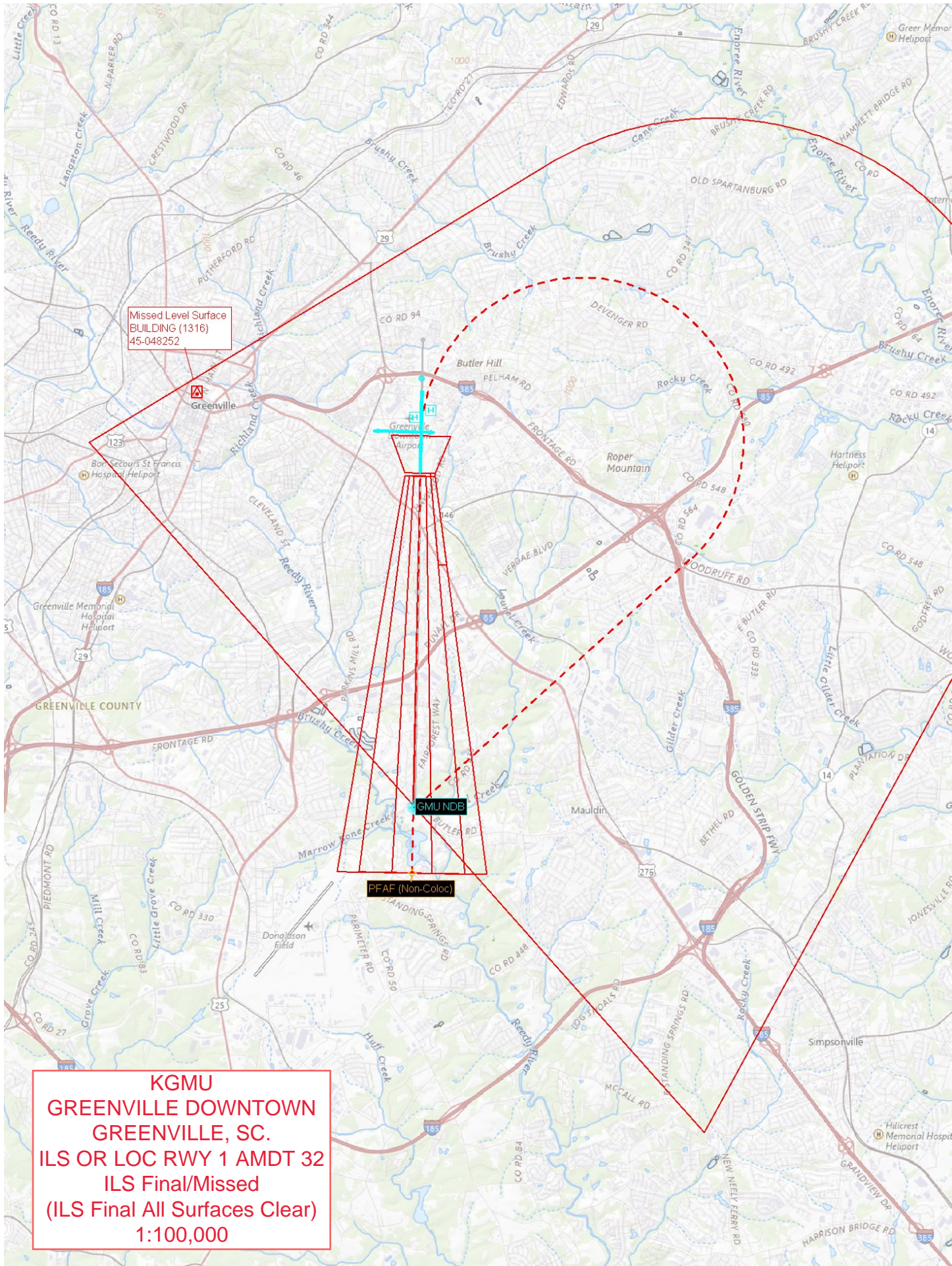
LOC GMU:NDB to KGMU:RW01:AER
TOWER (1167)
45-001318

PFAC (LOC FAC Abeam)

C-H TOWER (1849)
45-000599

KGMU
GREENVILLE DOWNTOWN
GREENVILLE, SC.
ILS OR LOC RWY AMDT 32
CLIMB-IN-HOLD
1:500,000

HIGH SPEED MILITARY AIRCRAFT OPERATING
FROM THE SURFACE TO 500' WITHIN
ANDERSON FLD

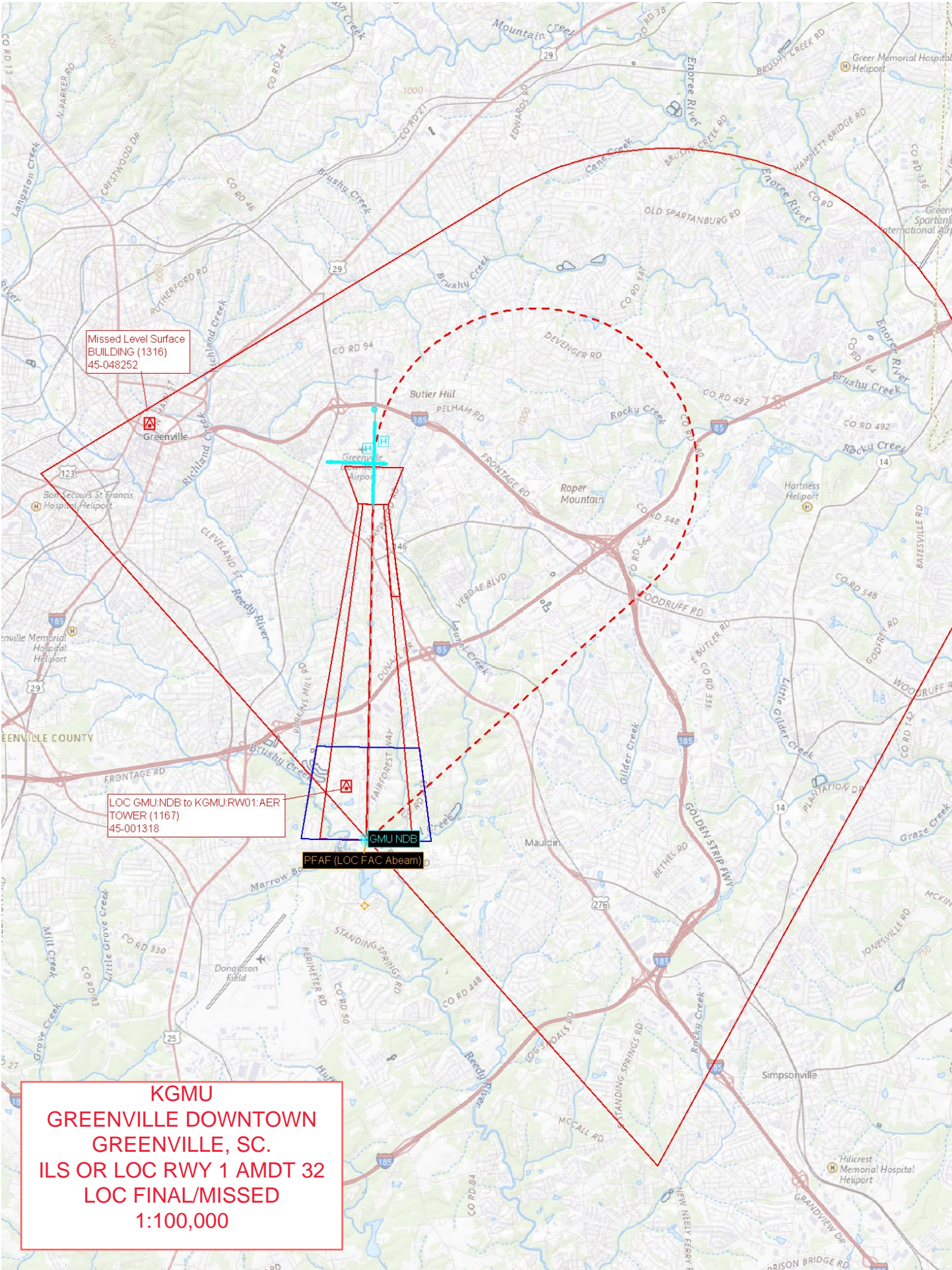


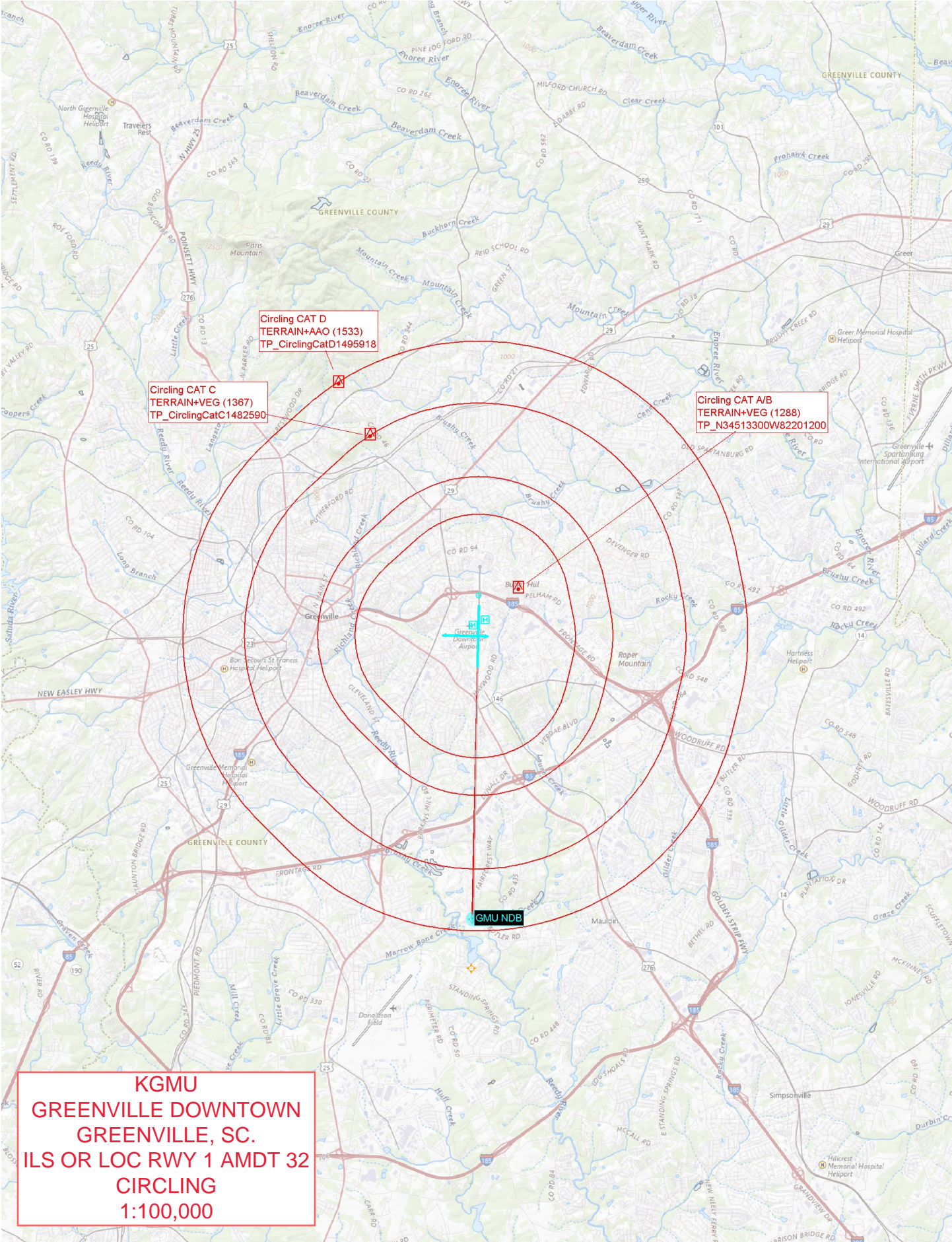
Missed Level Surface
BUILDING (1316)
45-048252

GMU NDB

PFAF (Non-Coloc)

**KGMU
GREENVILLE DOWNTOWN
GREENVILLE, SC.
ILS OR LOC RWY 1 AMDT 32
ILS Final/Missed
(ILS Final All Surfaces Clear)
1:100,000**





**Circling CAT D
TERRAIN+AAO (1533)
TP_CirclingCatD1495918**

**Circling CAT C
TERRAIN+VEG (1367)
TP_CirclingCatC1482590**

**Circling CAT A/B
TERRAIN+VEG (1288)
TP_N34513300W82201200**

GMU NDB

**KGMU
GREENVILLE DOWNTOWN
GREENVILLE, SC.
ILS OR LOC RWY 1 AMDT 32
CIRCLING
1:100,000**