

Flight Procedures Cover Page	Task Action: FLIGHT CHECK	Task Type: SID	Estimated Chart Date: 07/11/2024	APWS Task ID: C8A6F5F2FC474ED5BAEFCAA5F01A7F4B	APWS Project ID: 7AB4963D873447588CD5E3A50156708A
Procedure: SID RDHSE ONE (RNAV) LOUISVILLE KY KSDF		Enroute: YES	Specialist: Melton, William		Agreement Number:
Airport ID: KSDF			Airport City: LOUISVILLE		State: KY
Facility ID:	Facility Type:	Flight Inspection Remark Type: New FC Slot			
<div>Procedure Comments:</div> <div>ACTIVE DATA USED FOR KSDF</div> <div>CONTACT MIKE GARRITY (405)954-5602.</div> <div>ESV: FT KNOX (FTK) VOR/DME.</div> <div>APPROVAL LETTER: KSDF RWY 17L TO MURCA CLIMB GRADIENT.</div> <div>04/11/24: THIS IS AN UPDATED COPY OF THE FORM DEVELOPED ON 03/04/24.</div> <div>1. MEA RAISED FROM 2700 TO 10000.</div> <div>2. REMARK ADDED "MEA ALTITUDE DERIVED FROM DME/DME/IRU SOLUTIONS WITH AVAILABLE ESV'S WITHOUT CRITICAL DME'S".</div> <div>3. COMPUTER CODE CHANGED FROM RDHSE1.HNNAN TO RDHSE1.RDHSE.</div> <div>05/01/24: THIS IS AN UPDATED COPY OF THE FORM DEVELOPED ON 03/04/24.</div> <div>1. F FILE: DELETED DO NOT CHART MOCA FROM 8260-15B - CORRECT ADMINISTRATIVE ERROR.</div> <div><div>QUALITY 20 CHECKED</div><div>QUALITY 38 CHECKED</div></div>					

FIPC BASIC FORM						
PROCEDURE: SID RDHSE ONE (RNAV) LOUISVILLE KY KSDF			AIRPORT NAME: LOUISVILLE MUHAMMAD ALI INTL		AIRPORT ID: KSDF	SPECIAL CONTROL NO: AG-03-280-24
FAC ID: RDHSE1		CITY: LOUISVILLE			ST: KY	ORIG CHART DATE: 07/11/2024
DFL TYPE: PROC/D	THIRD PARTY: <input type="checkbox"/> YES	EST. TIME ON SITE: 1.0	REIMB. NUMBER:	PTS TASK ID: C8A6F5F2FC474ED5BAEFCAA5F01A7F4B		
PREFLIGHT NOTES						
REVIEWER:					DATE:	
COMMENTS: There was a remark that procedures forgot to have removed, "DO NOT CHART MOCA", on the following procedures. This remark needs removed, as the intent is to chart the MOCAs per criteria. The intent is to process an updated copy to remove that note after flight inspection. Please do a SAT/Change if possible.					CHECK ONE:	
					<input type="checkbox"/> FLT CK REQ <input type="checkbox"/> NFCR <input type="checkbox"/> REJECT	
						YES
					CPV COMPLETE?	X
PROCEDURE RESULTS						
INSPECTION DATE: 04/25/2024	CREW #: VN327	N #: N79	INSTRUMENT PROCEDURE STATUS: <input checked="" type="checkbox"/> SAT <input type="checkbox"/> SAT W/CHANGES <input type="checkbox"/> UNSAT		ARINC CODING: <input checked="" type="checkbox"/> SAT <input type="checkbox"/> SAT/GOLD <input type="checkbox"/> UNSAT	
FLIGHT INSPECTOR SIGNATURE: jeffrey eckman @ 04/26/2024 17:56			PRINTED NAME: ECKMAN, JEFFREY ALAN			NOTAM INITIATED? <input type="checkbox"/> YES <input checked="" type="checkbox"/> NO
FLIGHT INSPECTOR REMARKS: Procedure is SAT as proposed.						
IN-FLIGHT OBSTACLE REPORT						
OBSTRUCTION ID #:	COORDINATES OR LOCATION:	GNSS ALTITUDE (MSL):	BAROMETRIC ALTITUDE (MSL):	HEIGHT ABOVE GROUND LEVEL:		

ESV Details

Originating Office :AJV-C2		Airspace Docket Number :		Request Type :Establish		
Facility Data						
Chart Name:FT KNOX		City:FT KNOX		Ident:FTK		State:KY
Type/Class: DME		Frequency: M994		Reference Number: 23105021		
Extended Service Volume Data: (Requesting Officer)						
ESV ID	Radial 1	Radial 2	Distance	Minimum Altitude	Maximum Altitude	
AR 125133 - 007	343	7	46	33	128	
Requirement: DME COVERAGE AND MITIGATE CRITICAL DMES FOR RDHSE SID						
Signature:Medina Jose		Routing Symbol:				Date:10/20/2023
Extended Service Volume Data: (FMO)						
ESV ID	Radial 1	Radial 2	Distance	Minimum Altitude	Maximum Altitude	Action Type
AR 125133 - 007	343	7	46	33	128	APPROVE
Requirement/Remarks: DME COVERAGE AND MITIGATE CRITICAL DMES FOR RDHSE SIDAPPROVED. FREQUENCY PROTECTION & FIELD STRENGTH. PENDING FLIGHT INSPECT @ REQUIRED. DIST. & MIN ALT..						
Signature:Demas Tariku		Routing Symbol:			Date:10/26/2023	
Extended Service Volume Data: (Super FMO)						
ESV ID	Radial 1	Radial 2	Distance	Minimum Altitude	Maximum Altitude	Action Type
AR 125133 - 007	343	7	46	33	128	APPROVE
Requirement/Remarks: DME COVERAGE AND MITIGATE CRITICAL DMES FOR RDHSE SIDAPPROVED. FREQUENCY PROTECTION & FIELD STRENGTH. PENDING FLIGHT INSPECT @ REQUIRED. DIST. & MIN ALT..						
Signature:Hughes Dennis		Routing Symbol:			Date:10/27/2023	
Extended Service Volume Data: (FIFO)						
ESV ID	Radial 1	Radial 2	Distance	Minimum Altitude	Maximum Altitude	Action Type
AR 125133 - 007	343	7				
Requirement/Remarks:						
Signature:		Routing Symbol:			Date:	



Federal Aviation Administration

Memorandum

Date: December 15, 2023
To: Tom Lattimer, Airspace Manager CSA PBN Team
From: Jeffrey Chester, TCID Airspace and Procedures Manager
Prepared by: Robert Ellis, Senior ATC Specialist, NAVTAC Support
Subject: Letter of Approval Request RDHSE SID, KSDF

KSDF RDHSE Standard Instrument Departure (SID): RWY17L to MURCA

Currently, FAAO 8260.46J, para 2-1-1e(2)(b)2, the maximum permissible climb gradient is 500 ft/nm. The climb gradient (506.03 ft/NM) from LURVL to MURCA is greater than the maximum permissible gradient allowed. Flight Standards approval is required.

The RDHSE SID serves Louisville Muhammad Ali International Airport. The climb gradient of 506.03 ft/NM from LURVL to MURCA is calculated from altitude of at or above 4,000ft MSL at LURVL climbing to an altitude of at or above 8,000ft MSL at MURCA, over a distance 7.90NM. However, the gradient over multiple fixes is within the maximum permissible climb gradient. From the DER of RWY17L to MURCA is a track distance of 18.32NM. This equates to a climb gradient of 436.68 ft/NM.

SIM data supports the overall profile and lateral design. Industry indicates that the procedure can be managed without increased energy management actions by the flight crew.

Therefore, ZID is requesting a Letter of Approval to utilize the climb gradient to MURCA (At or above 8,000ft MSL) resulting in a climb gradient of 506.03 ft/NM as developed for the RDHSE SID.

Sincerely,

JEFFREY W
CHESTER

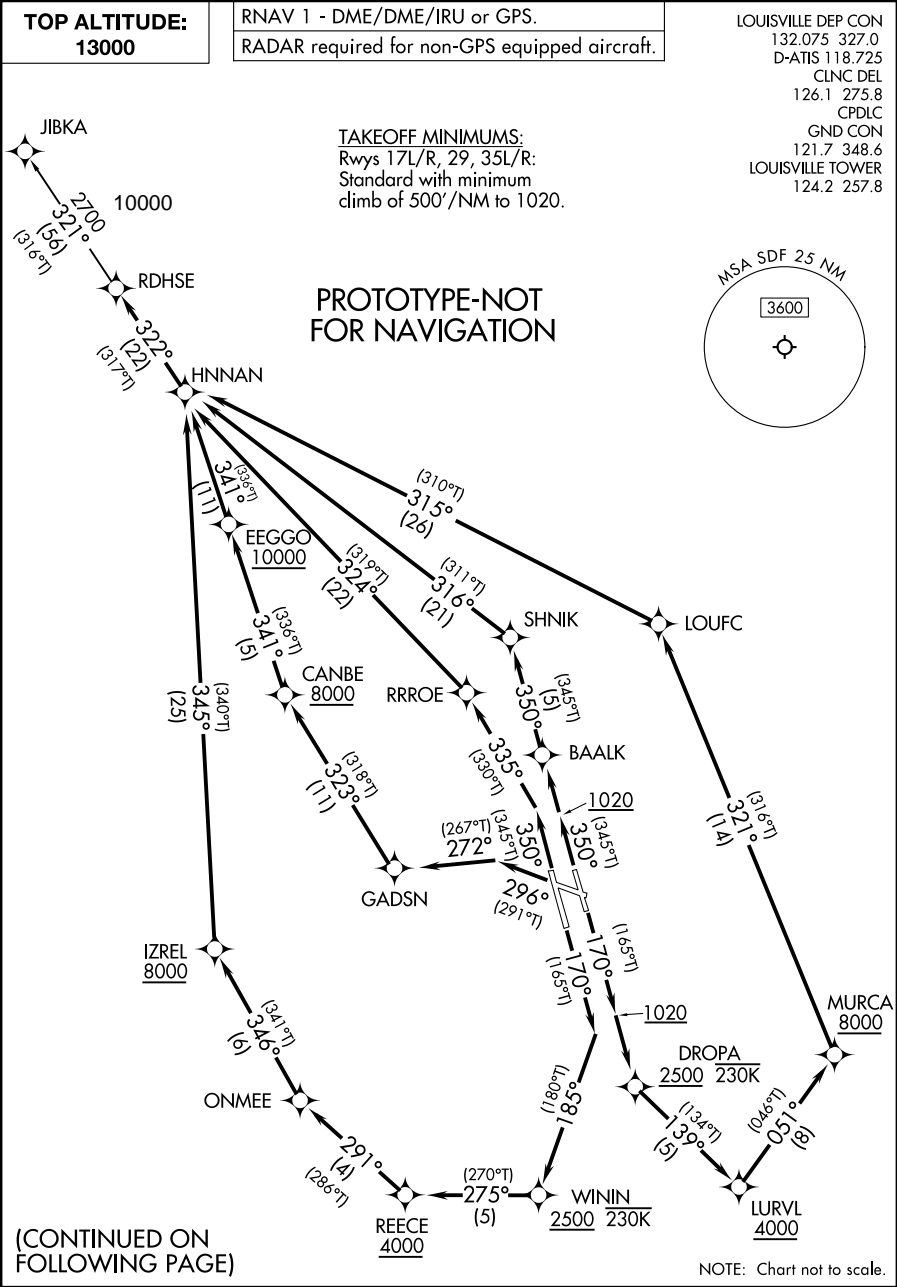
Digitally signed by
JEFFREY W CHESTER
Date: 2023.12.15
10:01:02 -05'00'

(RDHSE1.HNNAN) FIG

AL-239 (FAA)

LOUISVILLE MUHAMMAD ALI INTL (SDF)
LOUISVILLE, KENTUCKY

RDHSE ONE DEPARTURE (RNAV)



RDHSE ONE DEPARTURE (RNAV)

(RDHSE1.HNNAN) FIG

LOUISVILLE, KENTUCKY
LOUISVILLE MUHAMMAD ALI INTL (SDF)



DEPARTURE ROUTE DESCRIPTION

TAKEOFF RUNWAY 17L: Climb on heading 170° to 1020, then direct DROPA at or above 2500 and at or below 230K, then on track 139° to cross LURVL at or above 4000, then on track 051° to cross MURCA at or above 8000, then on track 321° to LOUFC, then on track 315° to HNNAN, thence ...

TAKEOFF RUNWAY 17R: Climb on heading 170° to intercept course 185° to cross WININ at or above 2500 and at or below 230K, then on track 275° to cross REECE at or above 4000, then on track 291° to ONMEE, then on track 346° to cross IZREL at or above 8000, then on track 345° to HNNAN, thence ...

TAKEOFF RUNWAY 29: Climb on heading 296° to intercept course 272° to GADSN, then on track 323° to CANBE, then on track 341° to cross EEGGO at or above 10000, then on track 341° to HNNAN, thence ...

TAKEOFF RUNWAY 35L: Climb on heading 350° to intercept course 335° to RRROE, then on track 324° to HNNAN, thence ...

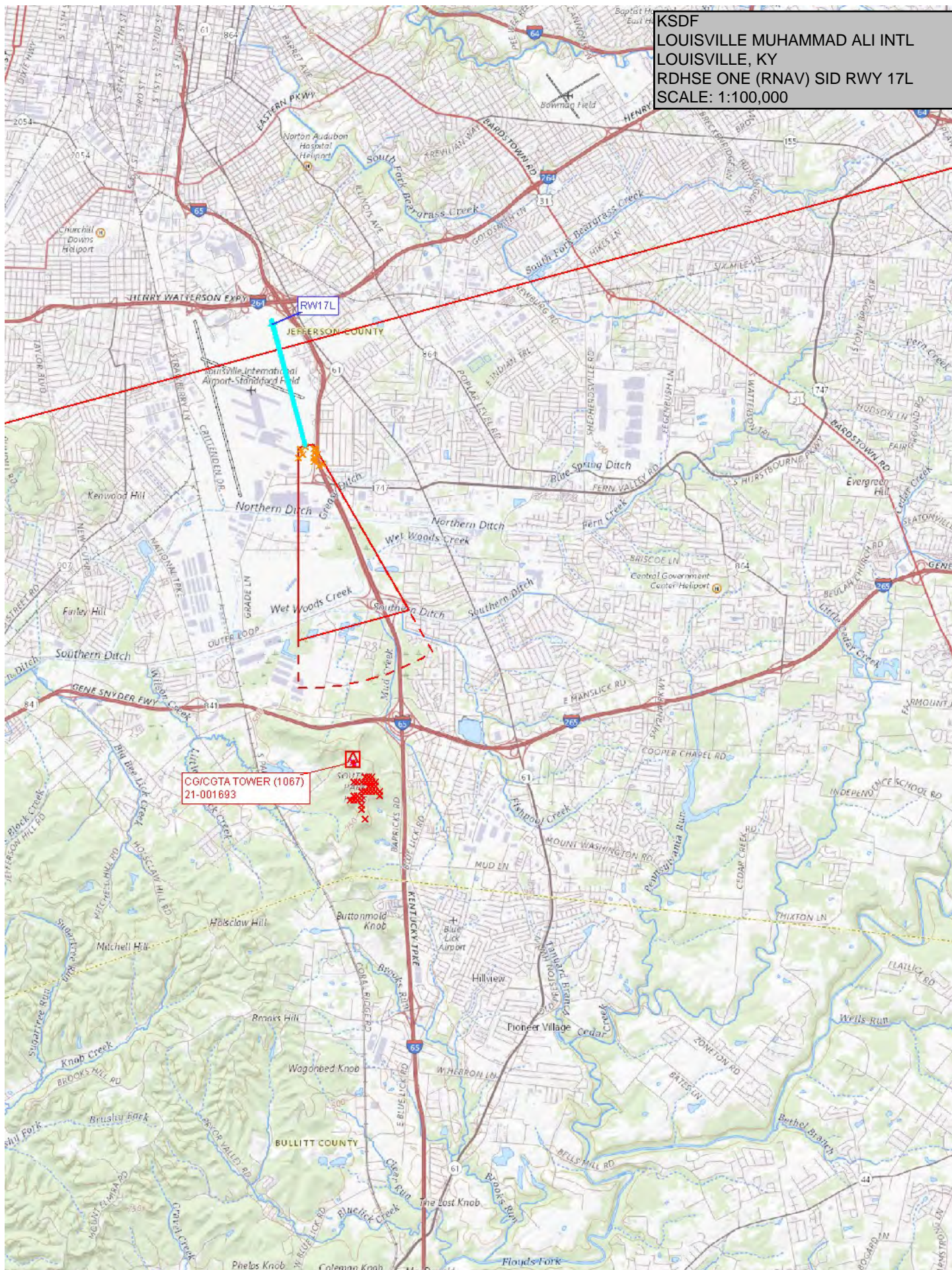
TAKEOFF RUNWAY 35R: Climb on heading 350° to 1020, then direct BAALK, then on track 350° to SHNIK, then on track 316° to HNNAN, thence ...

... then on track 322° to RDHSE. Then on transition. Maintain 13000. Expect filed altitude 10 minutes after departure.

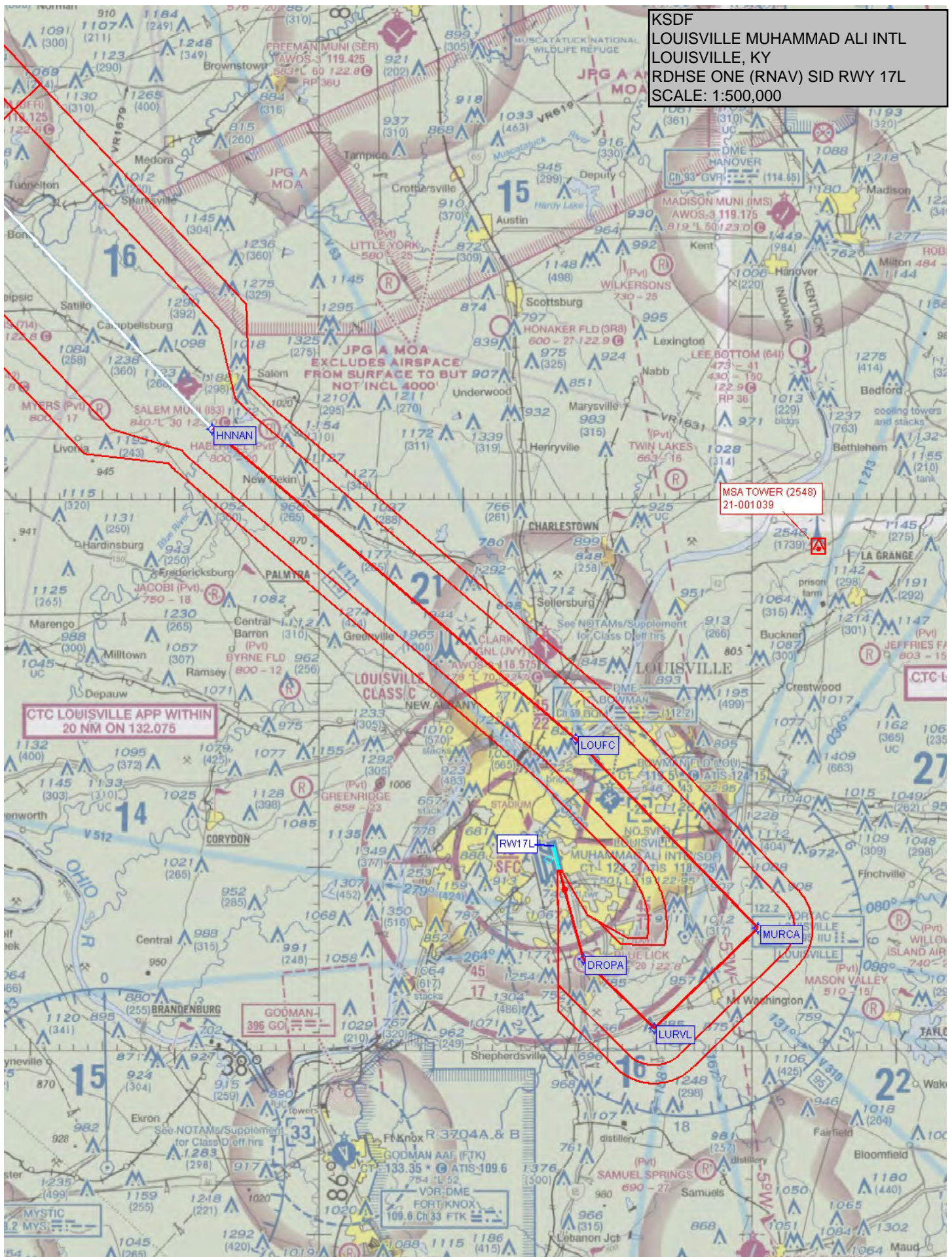
JIBKA TRANSITION (RDHSE1.JIBKA)

PROTOTYPE-NOT FOR NAVIGATION

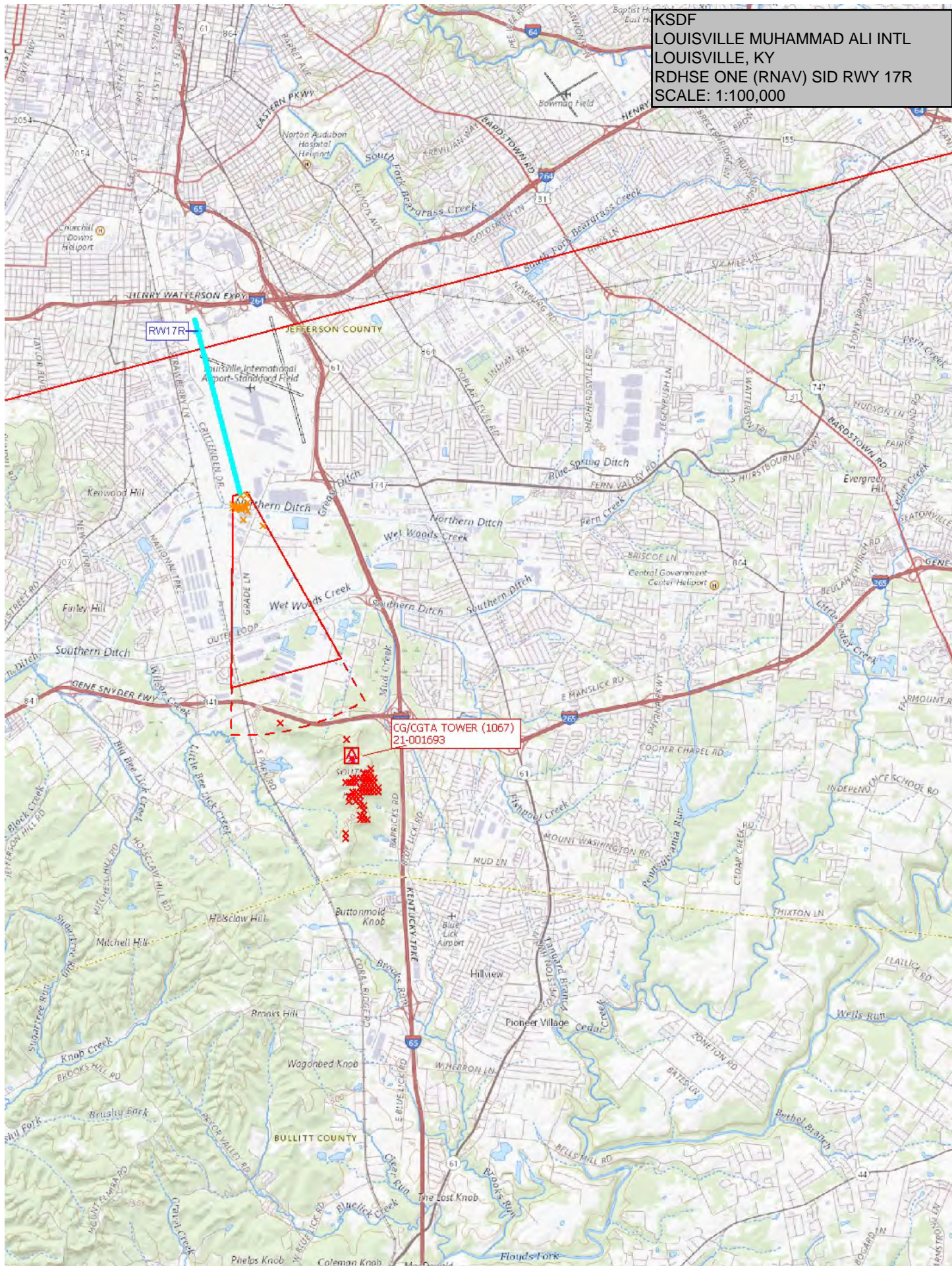
KSDF
LOUISVILLE MUHAMMAD ALI INTL
LOUISVILLE, KY
RDHSE ONE (RNAV) SID RWY 17L
SCALE: 1:100,000



KSDF
LOUISVILLE MUHAMMAD ALI INTL
LOUISVILLE, KY
RDHSE ONE (RNAV) SID RWY 17L
SCALE: 1:500,000

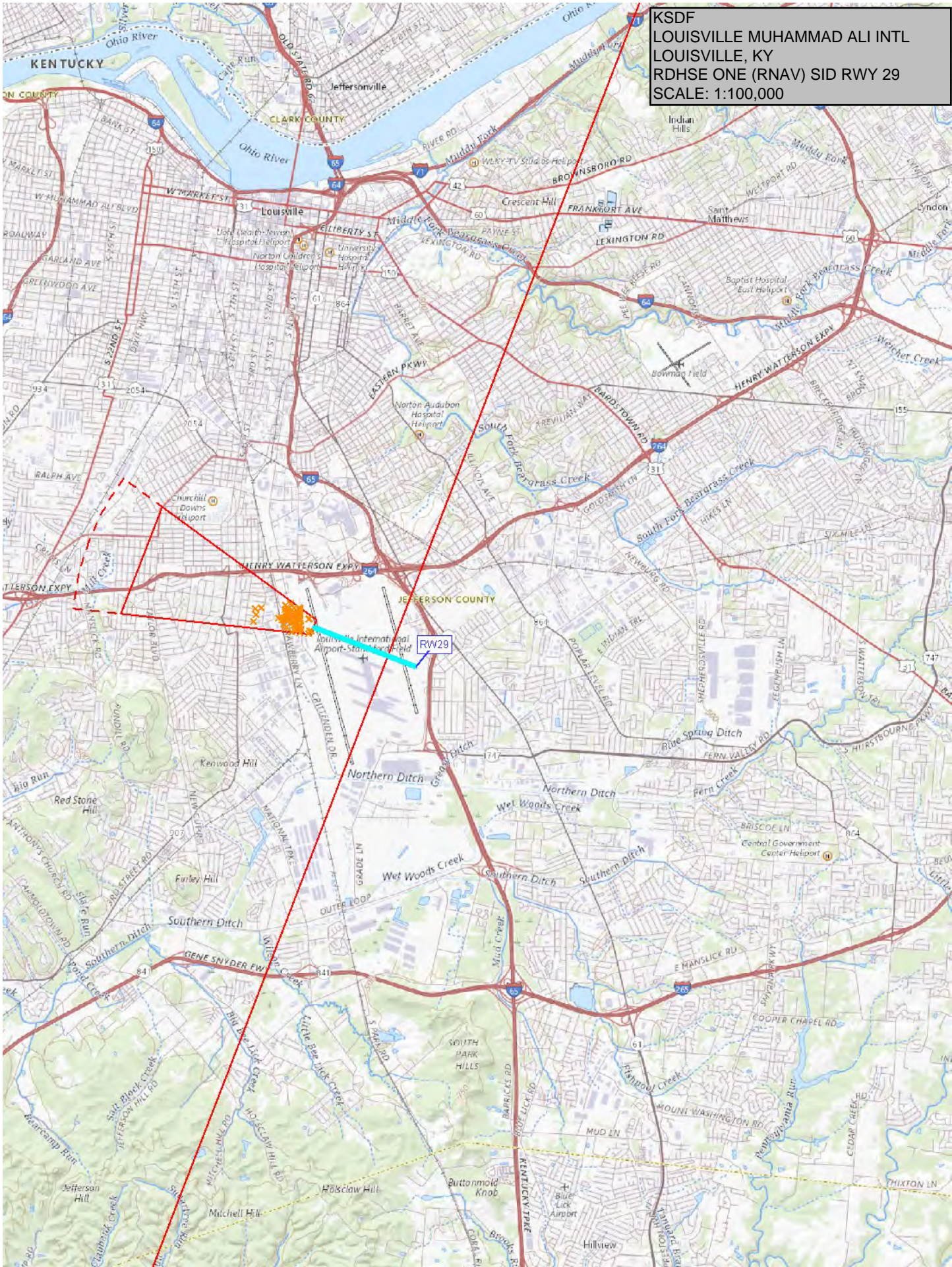


KSDF
LOUISVILLE MUHAMMAD ALI INTL
LOUISVILLE, KY
RDHSE ONE (RNAV) SID RWY 17R
SCALE: 1:100,000



KSDF
LOUISVILLE MUHAMMAD ALI INTL
LOUISVILLE, KY
RDHSE ONE (RNAV) SID RWY 17R
SCALE: 1:500,000

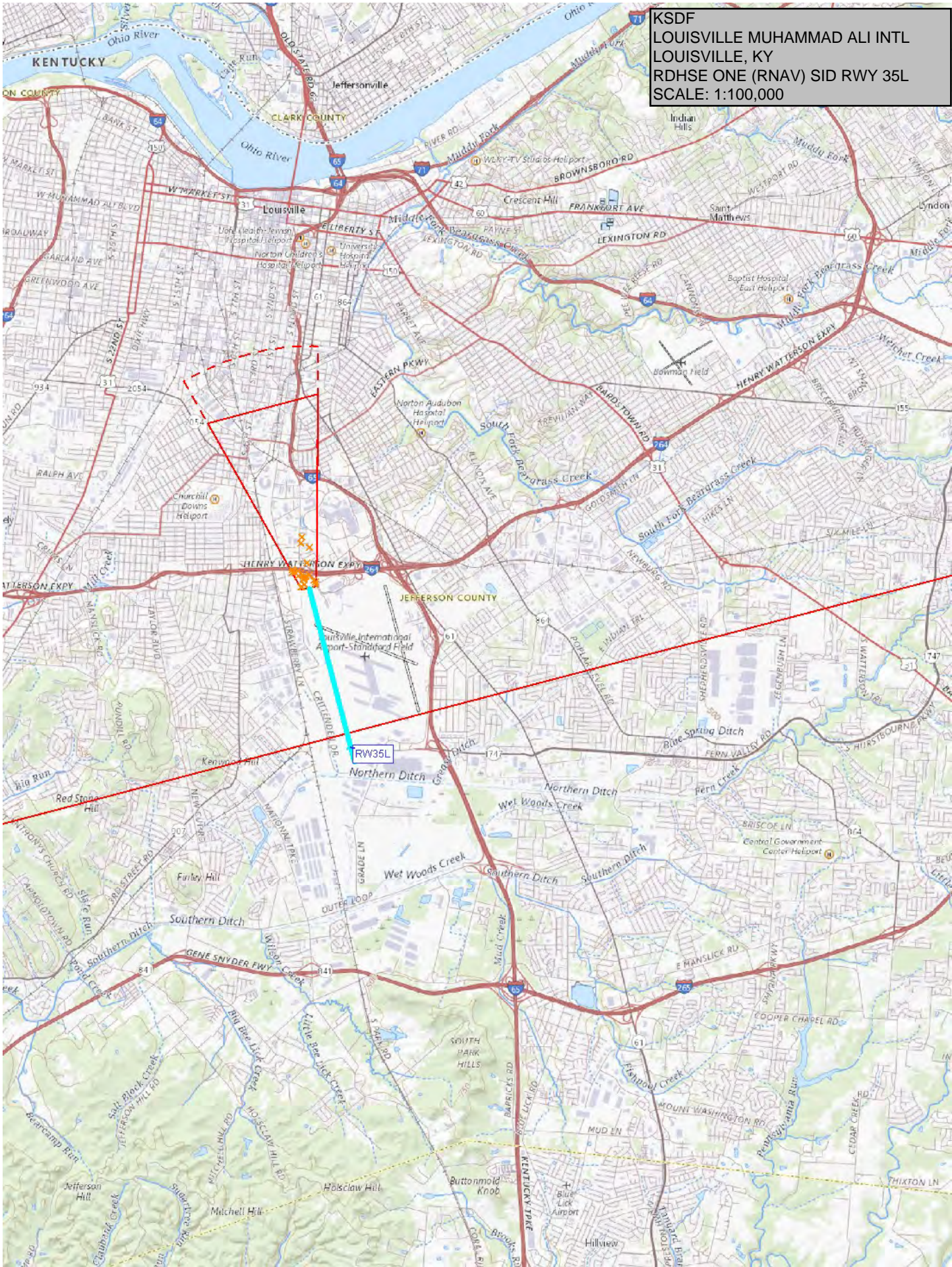
KSDF
LOUISVILLE MUHAMMAD ALI INTL
LOUISVILLE, KY
RDHSE ONE (RNAV) SID RWY 29
SCALE: 1:100,000



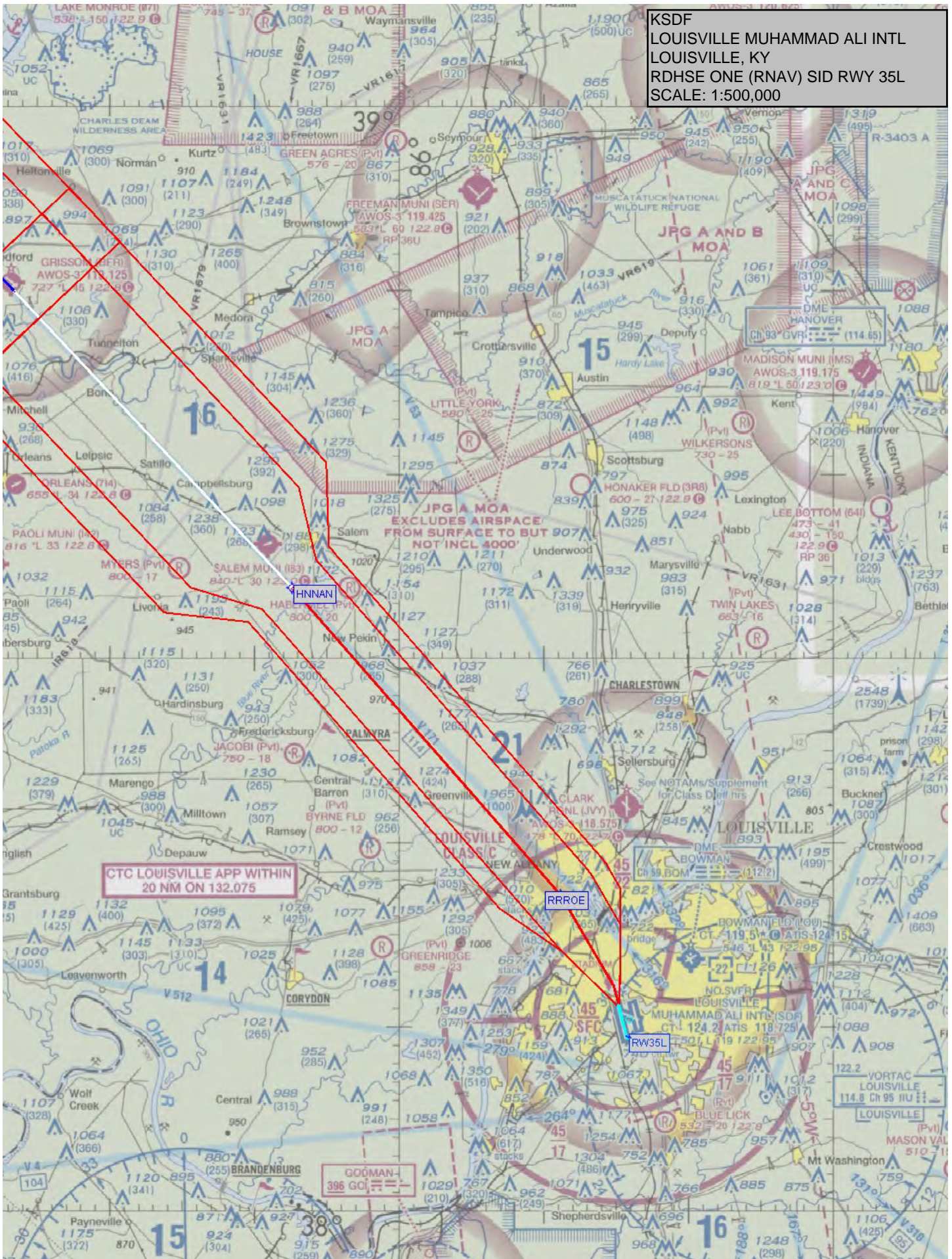
KSDF
LOUISVILLE MUHAMMAD ALI INTL
LOUISVILLE, KY
RDHSE ONE (RNAV) SID RWY 29
SCALE: 1:500,000



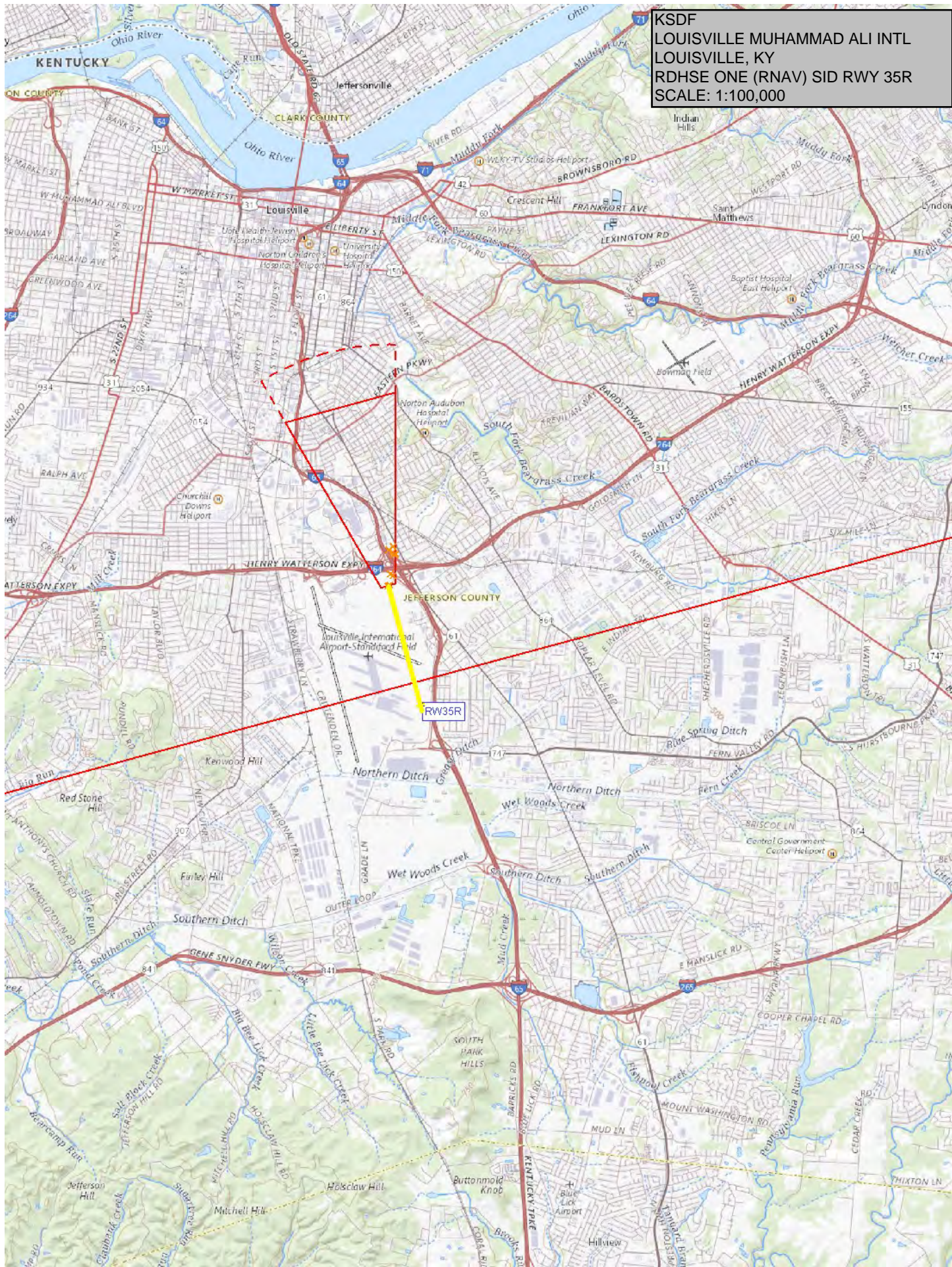
KSDF
LOUISVILLE MUHAMMAD ALI INTL
LOUISVILLE, KY
RDHSE ONE (RNAV) SID RWY 35L
SCALE: 1:100,000



KSDF
LOUISVILLE MUHAMMAD ALI INTL
LOUISVILLE, KY
RDHSE ONE (RNAV) SID RWY 35L
SCALE: 1:500,000



KSDF
LOUISVILLE MUHAMMAD ALI INTL
LOUISVILLE, KY
RDHSE ONE (RNAV) SID RWY 35R
SCALE: 1:100,000



KDSF
LOUISVILLE MUHAMMAD ALI INTL
LOUISVILLE, KY
RDHSE ONE (RNAV) SID RWY 35R
SCALE: 1:500,000

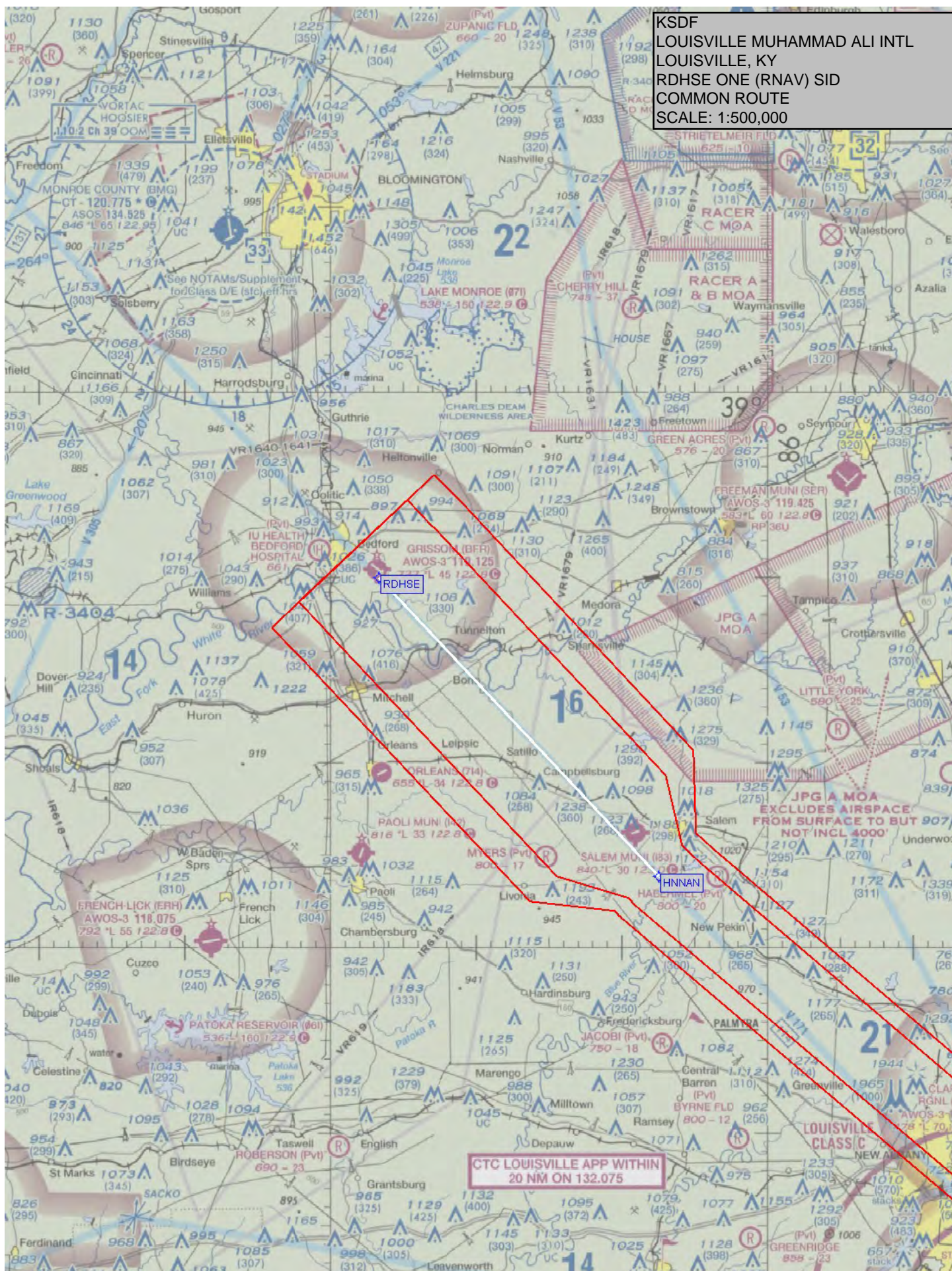
The chart displays a complex network of flight routes and airspace boundaries around Louisville, KY. Key features include:

- Airports:** Louisville Muhammad Ali Intl (KDFW), Louisville Bowman Field (KBOW), and several smaller regional airports.
- Navigation Aids:** VORTAC stations at Louisville (114.8 MHz) and other locations.
- Airspace:** Various Class C, E, and G airspace boundaries are shown, along with specific altitude restrictions.
- Obstacles:** Numerous towers and obstructions are marked with their MSL and AGL elevations.
- Communication:** Frequencies for ATIS, Tower, Unicom, and other services are provided for major airports.
- Terrain:** Elevation contours and spot heights are indicated throughout the area.

Key callouts on the chart include:

- CTC LOUISVILLE APP WITHIN 20 NM ON 132.075**
- JPG A MOA EXCLUDES AIRSPACE FROM SURFACE TO BUT 907' NOT INCL 4000'**
- SHNIK**, **BAALK**, and **RW35R** are highlighted near the main airport.
- GOODMAN-396 GO** is noted in the lower left quadrant.

KSDF
LOUISVILLE MUHAMMAD ALI INTL
LOUISVILLE, KY
RDHSE ONE (RNAV) SID
COMMON ROUTE
SCALE: 1:500,000



KSDF
LOUISVILLE MUHAMMAD ALI INTL
LOUISVILLE, KY
RDHSE ONE (RNAV) SID
JIBKA EN ROUTE TRANSITION
SCALE: 1:500,000

CTC INDIANAPOLIS APP WITHIN
20 NM ON 124.65 317.8

JIBKA TOWER (1250)
18-000192

RDHSE