

Flight Procedures Cover Page	Task Action: FLIGHT CHECK	Task Type: IAP	Estimated Chart Date: 03/19/2026	APWS Task ID: C8CB3E58F8CF4EEF9FC1BE568D694D85	APWS Project ID: 6A385672A9B24345B6DB2392C3A91AC7
Procedure: RNAV (GPS) RWY 5 AMDT 1A		Enroute: NO	Specialist: Shedd, Steven		Agreement Number:
Airport ID: KLCH			Airport City: LAKE CHARLES		State: LA
Facility ID:	Facility Type:	Flight Inspection Remark Type: New FC Slot			

Procedure Comments:
 CANCELS NOTAM FDC 4/9122.
 ACTIVE AIRPORT DATA USED.
 POC: Kyle Thompson, AJV-A33, 405-954-2135.



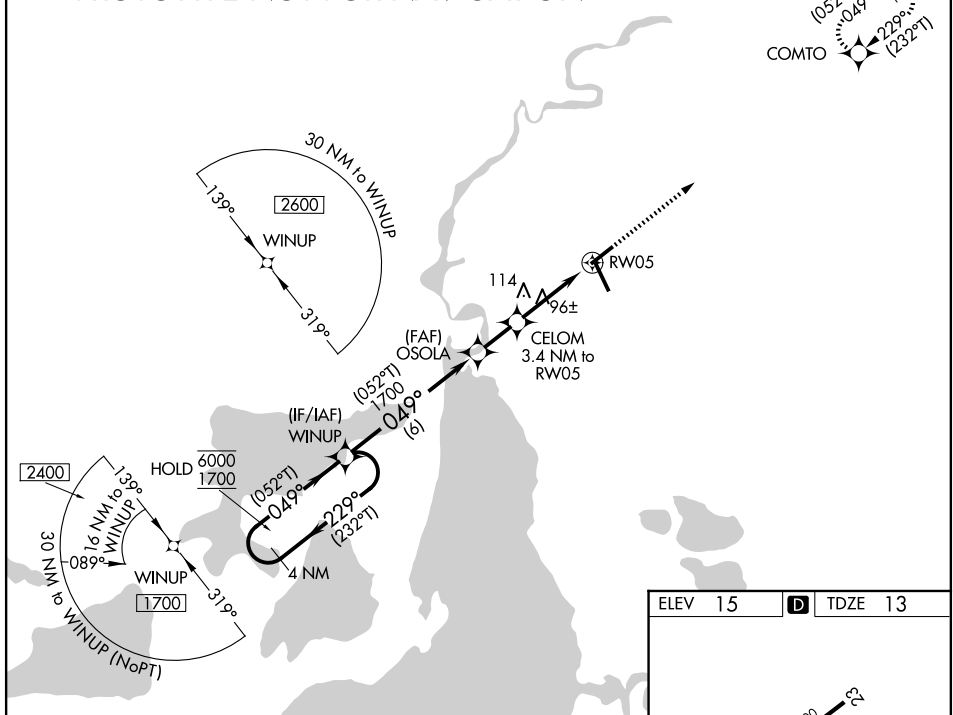
WAAS CH 69440 W05A	APP CRS 049°	Rwy Ldg TDZE Apt Elev	5200 13 15
--	------------------------	-----------------------------	---------------------------------------

RNAV (GPS) RWY 5

LAKE CHARLES RGNL (LCH)

RNP APCH - GPS.		MISSED APPROACH: Climb to 1900 direct COMTO and hold.		
ASR Rwy 5 helicopter visibility reduction below 3/4 SM NA.				
ATIS 118.75	LAKE CHARLES APP CON* 119.35 353.75	LAKE CHARLES TOWER* 120.7 (CTAF) 257.8	GND CON 121.8	UNICOM 122.95

PROTOTYPE-NOT FOR NAVIGATION



ELEV 15	TDZE 13
---------	---------

REIL Rwy 5 and 23
MIRL Rwy 5-23
HIRL Rwy 15-33

4 NM Holding Pattern	WINUP	OSOLA	CELOM	COMTO
6000 ← 229° (232°T)	(052°T)	1700	3.4 NM to RW05	1900
1700 → 049° (052°T)	049°	1140	0.9 NM to RW05	COMTO
		3.00° TCH 49		
	6 NM	1.8 NM	2.5 NM	0.9 NM

CATEGORY	A	B	C	D
LP MDA		360-1	347 (400-1)	
LNAV MDA		380-1	367 (400-1)	
CIRCLING	440-1 425 (500-1)	480-1 465 (500-1)	580-1½ 565 (600-1½)	680-2 665 (700-2)

OLD

LAKE CHARLES, LOUISIANA

AL-5083 (FAA)

23110

WAAS CH 69440 W05A	APP CRS 049°	Rwy Idg 5200 TDZE 14 Apt Elev 15
--	------------------------	---

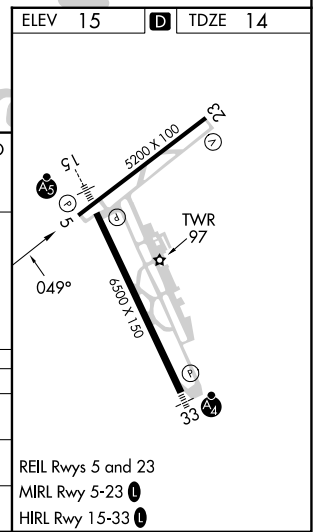
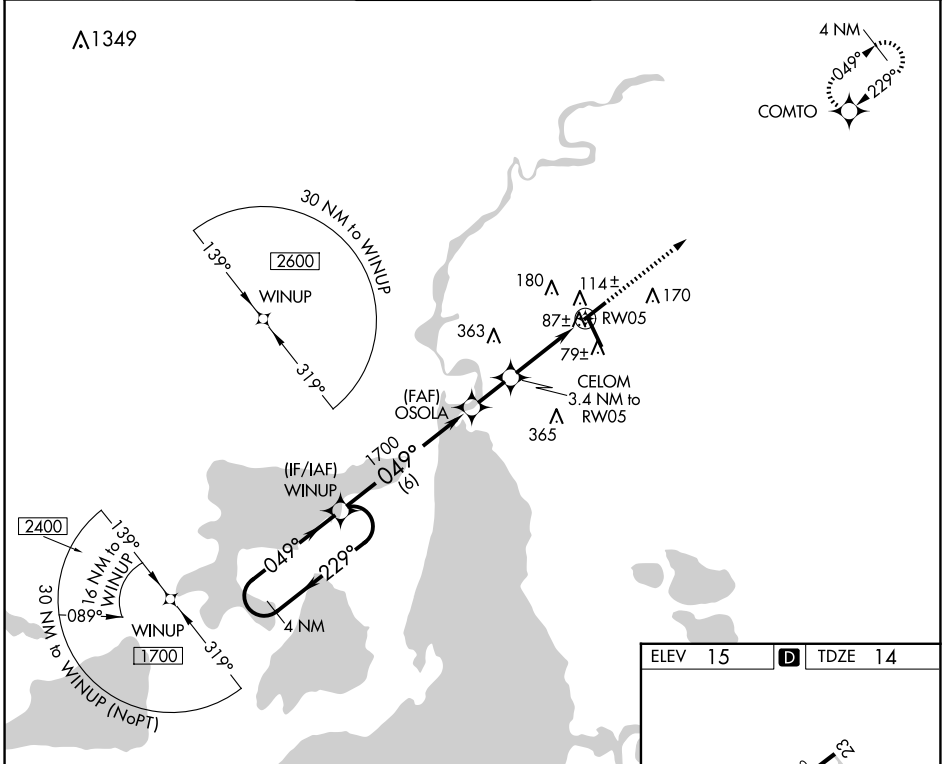
RNAV (GPS) RWY 5

LAKE CHARLES RGNL (LCH)

ASR Rwy 5 helicopter visibility reduction below 3/4 SM NA.
DME/DME RNP-0.3 NA.

MISSED APPROACH: Climb to 1900 direct COMTO and hold.

ATIS 118.75	LAKE CHARLES APP CON * 119.35 353.75	LAKE CHARLES TOWER * 120.7 (CTAF) 257.8	GND CON 121.8	CLNC DEL 126.25	UNICOM 122.95
-----------------------	--	---	-------------------------	---------------------------	-------------------------



4 NM Holding Pattern	WINUP	OSOLA	1900	COMTO
1700 ← 229°	← 049°	← 049°	↑	☀
		1700		
		CELOM 3.4 NM to RW05		
		1140		
		3.00° TCH 49		
		0.9 NM to RW05		
		6 NM	1.8 NM	2.5 NM
CATEGORY	A	B	C	D
LP MDA	340-1 326 (400-1)			
LNAV MDA	380-1 366 (400-1)			
CIRCLING	440-1 425 (500-1)	480-1 465 (500-1)	580-1½ 565 (600-1½)	680-2 665 (700-2)

REIL Rwy 5 and 23
MIRL Rwy 5-23
HIRL Rwy 15-33

LAKE CHARLES, LOUISIANA
Amdt 1 07DEC17

30°08'N-93°13'W

LAKE CHARLES RGNL (LCH)
RNAV (GPS) RWY 5

SC-4, 04 SEP 2025 to 02 OCT 2025

SC-4, 04 SEP 2025 to 02 OCT 2025