

Flight Procedures Cover Page	Task Action: P-NOTAM	Task Type: IAP	Estimated Chart Date: 06/15/2023	APWS Task ID: C9786323DBD741DEAEB4A4A8A57116E5	APWS Project ID: 2BB04F031B81497B8F4F431E13002DDE
Procedure: RNAV (GPS) RWY 23 AMDT 1C		Enroute: NO	Specialist: Feronti, Tia		Agreement Number:
Airport ID: KOCW			Airport City: WASHINGTON		State: NC
Facility ID:	Facility Type:	Flight Inspection Remark Type:			

**Procedure Comments:**  
 PROCESSED IAW TECHNICAL SUPPORT GROUP (AJF-17) MEMO DATED 07/07/2021 GUIDANCE FOR PROCEDURAL CHANGES REQUIRING FLIGHT INSPECTION/VALIDATION.

CANCELS T-NOTAM 1/6504.  
 BARO-VNAV NOTE CHANGE TO BARO-VNAV AND VDP NA.

CONTACT JASON KRETSCHMER, AJV-A421, 405-954-4019.

*Digitally signed by*  
**JASON KRETSCHMER**  
 Apr 04, 2023

04/03/2023

QUALITY  
 14  
 CHECKED

QUALITY  
 33  
 CHECKED

OLD

WASHINGTON, NORTH CAROLINA

AL-5916 (FAA)

21224

WAAS CH <b>93810</b> <b>W23A</b>	APP CRS <b>225°</b>	Rwy Idg TDZE Apt Elev	<b>4800</b> <b>37</b> <b>37</b>
--	------------------------	-----------------------------	---------------------------------------

# RNAV (GPS) RWY 23

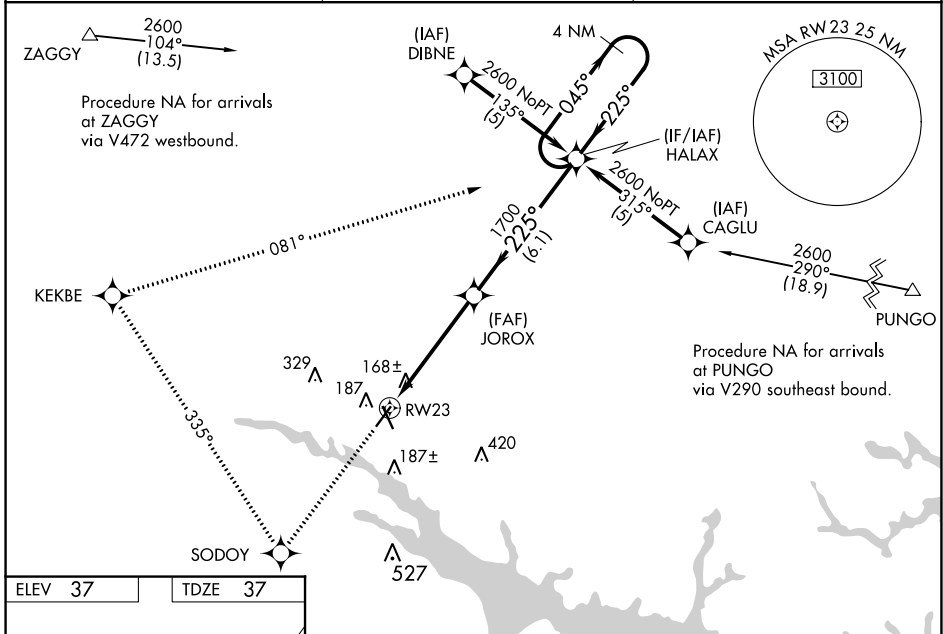
WASHINGTON-WARREN (OCW)

RNP APCH-GPS.

**▼** Baro-VNAV NA when using Greenville altimeter setting. For uncompensated Baro-VNAV systems, LNAV/VNAV NA below -15°C or above 54°C.  
**▲** When local altimeter setting not received, use Greenville altimeter setting: increase LPV DA to 478 feet and visibility ¼ SM, and LNAV/VNAV DA to 515 feet and visibility ½ SM; increase all MDAs 60 feet and visibility LNAV Cat C/D ¼ SM. Circling Rwy 17 NA at night.

MISSED APPROACH: Climb to 2600 direct SODOY and right turn via 335° track to KEKBE and right turn via 081° track to HALAX and hold.

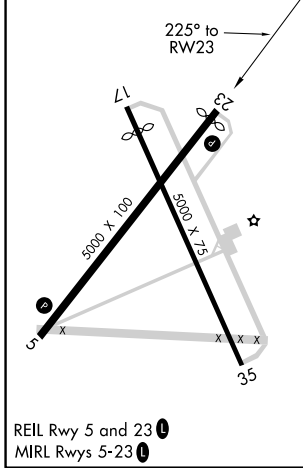
AWOS-3 <b>120.175</b>	CHERRY POINT APP CON <b>119.35 377.175</b>	UNICOM <b>122.7 (CTAF) 0</b>
--------------------------	---	---------------------------------



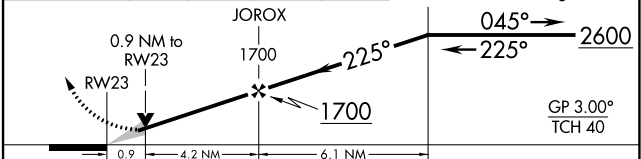
SE-2, 23 FEB 2023 to 23 MAR 2023

SE-2, 23 FEB 2023 to 23 MAR 2023

ELEV 37	TDZE 37
---------	---------



2600	SODOY	KEKBE	HALAX	VGSI and RNAV glidepath not coincident (VGSI Angle 3.75/TCH 45). 4 NM Holding Pattern
↑	✦	tr 335°	tr 081°	HALAX



CATEGORY	A	B	C	D
LPV DA		436-1 1/8	399 (400-1 1/8)	
LNAV/VNAV DA		473-1 1/4	436 (500-1 1/4)	
LNAV MDA	420-1	383 (400-1)	420-1 1/8	383 (400-1 1/8)
CIRCLING	540-1	503 (600-1)	640-1 3/4 603 (700-1 3/4)	780-2 1/2 743 (800-2 1/2)

WASHINGTON, NORTH CAROLINA  
Amdt 1B 12AUG21

35°34'N-77°03'W

# WASHINGTON-WARREN (OCW) RNAV (GPS) RWY 23

OLD