

Flight Procedures Cover Page	Task Action: Abbreviated Amendment	Task Type: SID	Estimated Chart Date: 05/14/2026	APWS Task ID: CB202B5AFFC849B393423698319E527E	APWS Project ID: CDFAF0A2C4BA4A70A050E721D847D817
Procedure: KERMIT FIVE DEPARTURE		Enroute: YES	Specialist: Hirst, Charles		Agreement Number:
Airport ID: KCLT			Airport City: CHARLOTTE		State: NC
Facility ID: CLT	Facility Type: VOR_DME	Flight Inspection Remark Type:			

Procedure Comments:
RWY NUMBER CHANGING FROM 18R/36L TO 1L/19R.
PENDING AIRNAV AIRPORT & NAVAID DATA USED.
CANCEL NOTAMS 4/9224, 4/9228, 4/9230, 4/9233, 4/9238, 4/9241, 4/9243, 4/9247, 4/9249 BY REMOVING ANDYS & TREAL TRANSITIONS.
PROCESSED IAW TECHNICAL SUPPORT GROUP (AJF-17) MEMO DATED 07/07/2021, SUBJECT: GUIDANCE FOR PROCEDURAL CHANGES REQUIRING FLIGHT INSPECTION VALIDATION.
FOR ADDITIONAL INFORMATION CONTACT CASIMIR TABAKA, MANAGER 405-954-7931



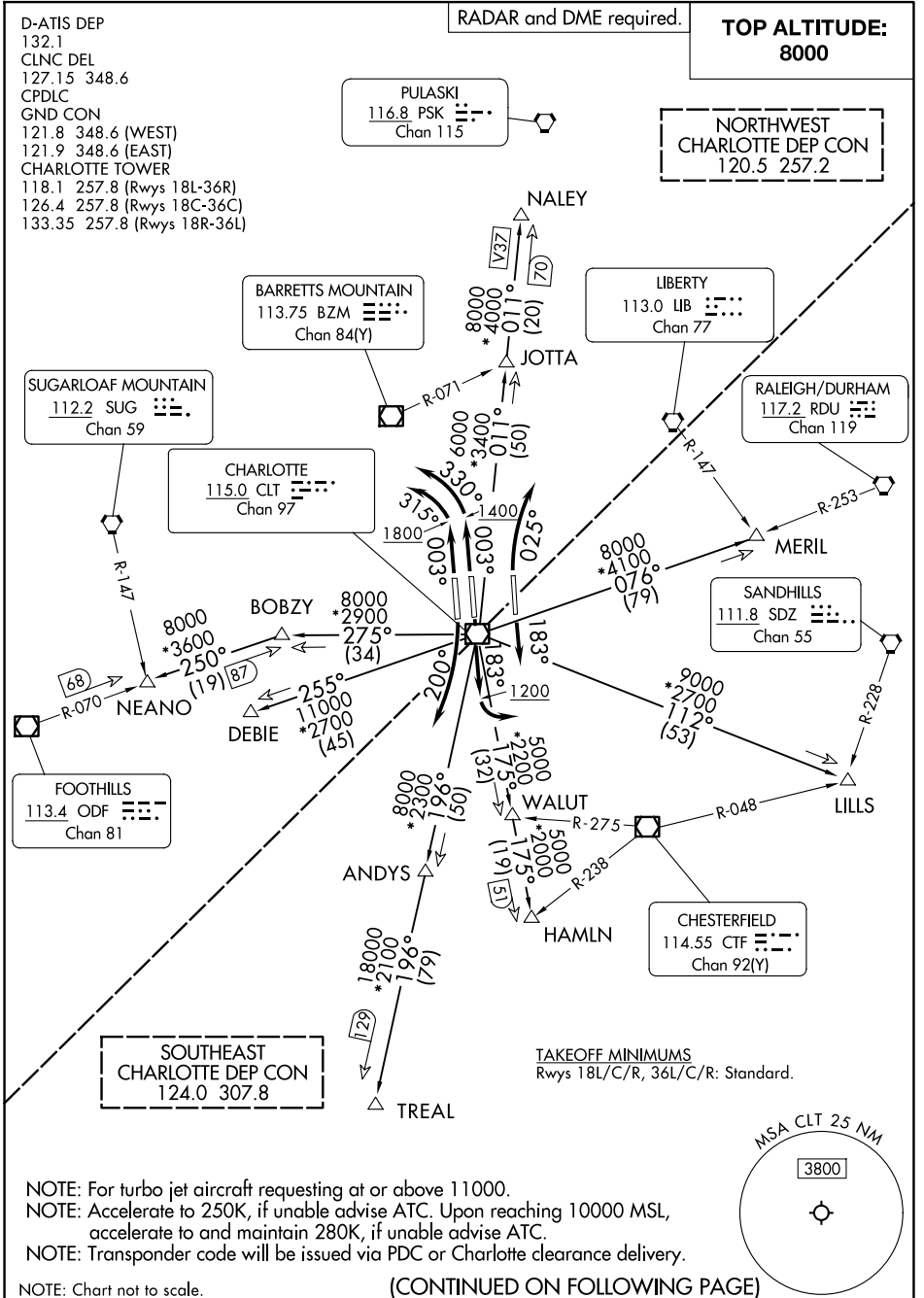
ACTIVE PROCEDURE

(KER4.KER) 25051

AL-78 (FAA)

CHARLOTTE/DOUGLAS INTL (CLT)
CHARLOTTE, NORTH CAROLINA

KERMIT FOUR DEPARTURE



SE-2, 02 OCT 2025 to 30 OCT 2025

SE-2, 02 OCT 2025 to 30 OCT 2025

KERMIT FOUR DEPARTURE

(KER4.KER) 21MAR24

CHARLOTTE, NORTH CAROLINA
CHARLOTTE/DOUGLAS INTL (CLT)

(CONTINUED ON FOLLOWING PAGE)

ACTIVE PROCEDURE

(KER4.KER) 24081

AL-78 (FAA)

CHARLOTTE/DOUGLAS INTL (CLT)
CHARLOTTE, NORTH CAROLINA

KERMIT FOUR DEPARTURE



DEPARTURE ROUTE DESCRIPTION

TAKEOFF RUNWAY 18L: Climb on heading 183°, thence

TAKEOFF RUNWAY 18C: Climb on heading 183° to 1200 before turning left, thence

TAKEOFF RUNWAY 18R: Climbing right turn heading 200°, thence

TAKEOFF RUNWAY 36L: Climb on heading 003° to 1800 then left turn heading 315°, thence

TAKEOFF RUNWAY 36C: Climb on heading 003° to 1400 then left turn heading 330°, thence

TAKEOFF RUNWAY 36R: Climbing right turn heading 025°, thence

. . . . on RADAR vectors to intercept filed/assigned transition or enroute fix/navaid.
Maintain 8000, expect filed altitude/flight level 10 minutes after departure.

ANDYS TRANSITION (KER4.ANDYS): From over CLT VOR/DME on CLT R-196 to ANDYS.

DEBIE TRANSITION (KER4.DEBIE): From over CLT VOR/DME on CLT R-255 to DEBIE.

HAMLN TRANSITION (KER4.HAMLN): From over CLT VOR/DME on CLT R-175 to HAMLN.

JOTTA TRANSITION (KER4.JOTTA): From over CLT VOR/DME on CLT R-011 to JOTTA.

LILLS TRANSITION (KER4.LILLS): From over CLT VOR/DME on CLT R-112 to LILLS.

MERIL TRANSITION (KER4.MERIL): From over CLT VOR/DME on CLT R-076 to MERIL.

NALEY TRANSITION (KER4.NALEY): From over CLT VOR/DME on CLT R-011 to NALEY.

NEANO TRANSITION (KER4.NEANO): From over CLT VOR/DME on CLT R-275 to BOBZY, then on ODF R-070 to NEANO.

TREAL TRANSITION (KER4.TREAL): From over CLT VOR/DME on CLT R-196 to TREAL.

SE-2, 02 OCT 2025 to 30 OCT 2025

SE-2, 02 OCT 2025 to 30 OCT 2025

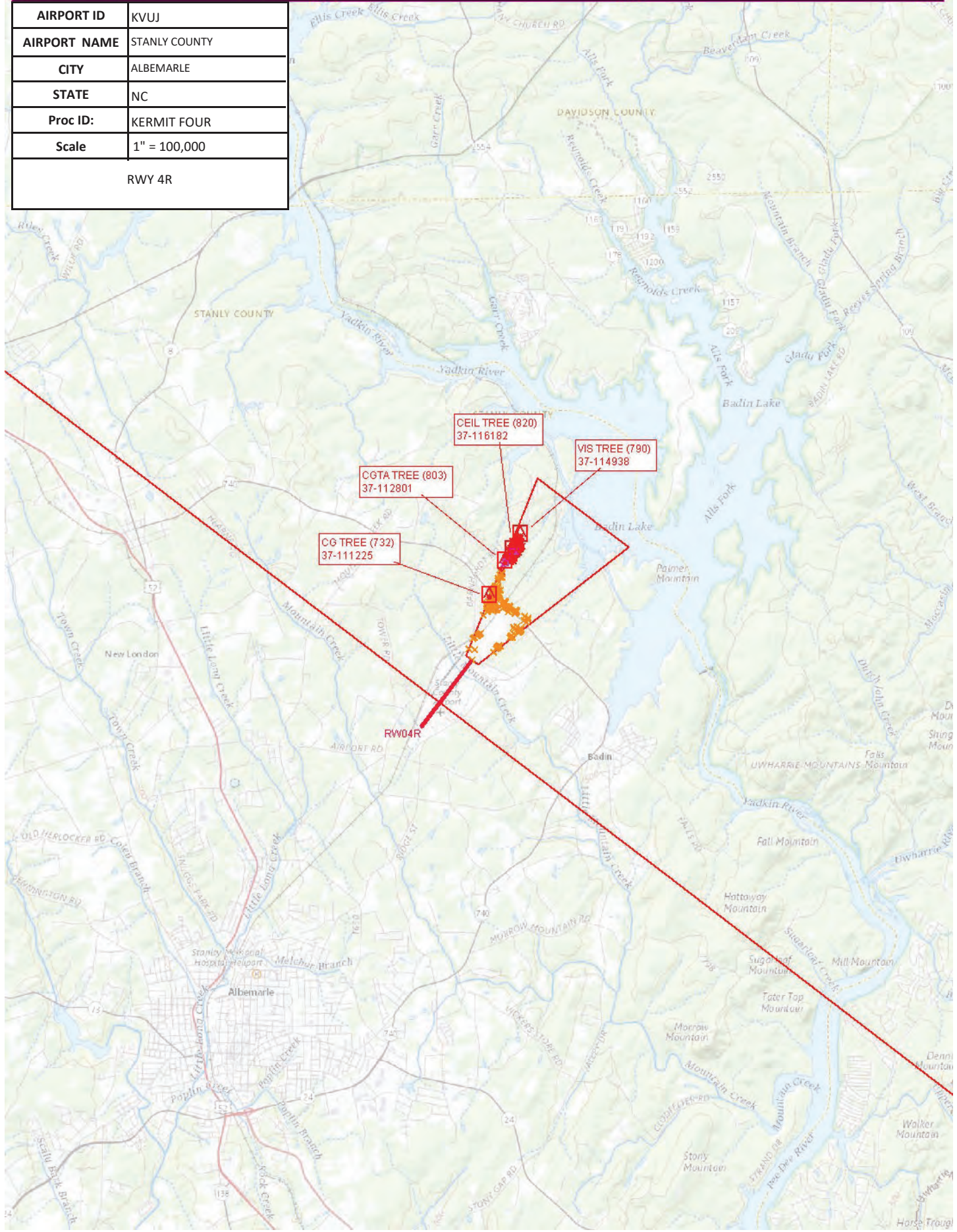
KERMIT FOUR DEPARTURE

(KER4.KER) 21MAR24

CHARLOTTE, NORTH CAROLINA
CHARLOTTE/DOUGLAS INTL (CLT)

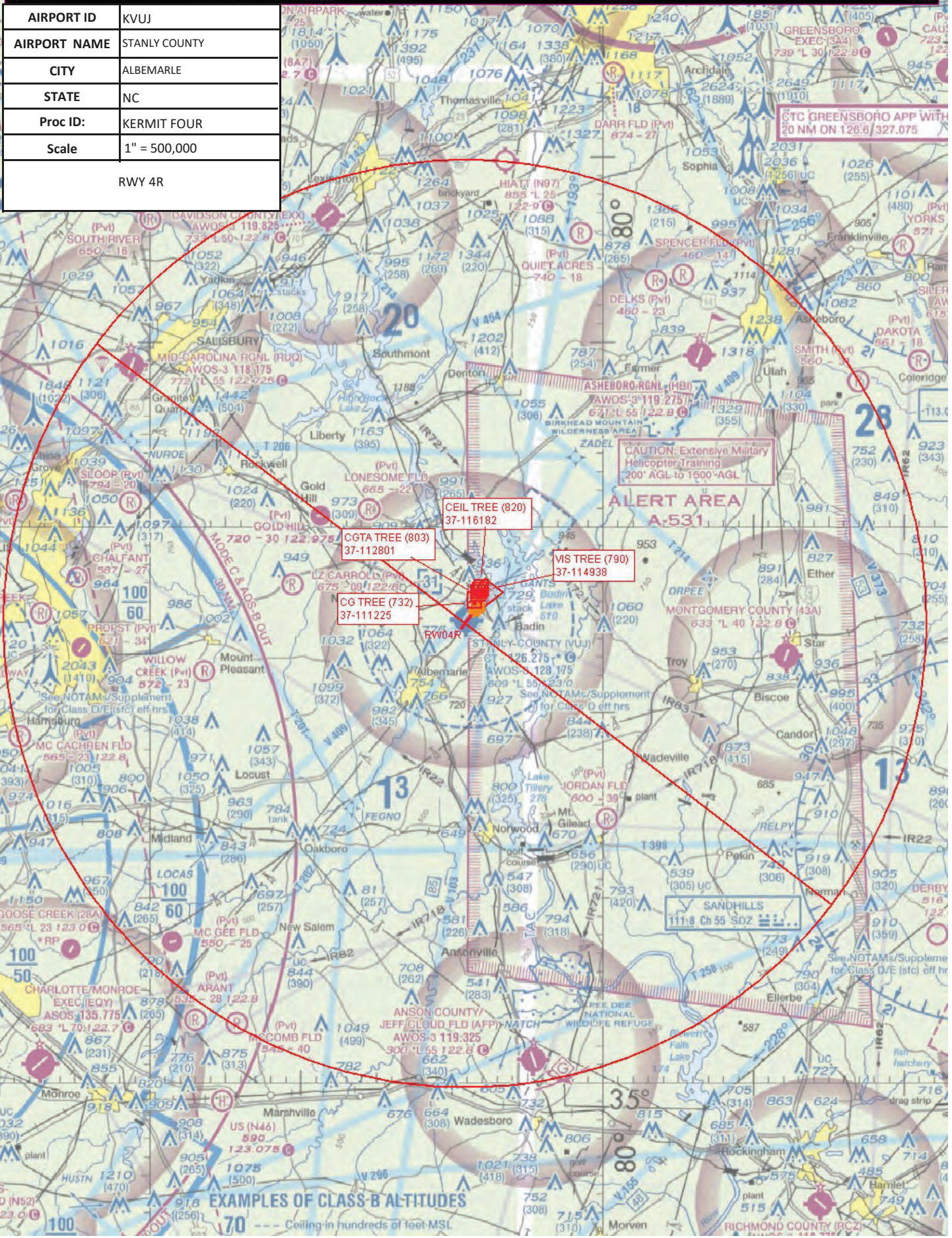


AIRPORT ID	KVUJ
AIRPORT NAME	STANLY COUNTY
CITY	ALBEMARLE
STATE	NC
Proc ID:	KERMIT FOUR
Scale	1" = 100,000
RWY 4R	



AIRPORT ID	KVUJ
AIRPORT NAME	STANLY COUNTY
CITY	ALBEMARLE
STATE	NC
Proc ID:	KERMIT FOUR
Scale	1" = 500,000
RWY 4R	

CTC GREENSBORO APP WITH 20 NM ON 126.8/327.075



CAUTION: Extensive Military Helicopter Training 200' AGL to 1500' AGL

CEIL TREE (820)
37-118182

VIS TREE (790)
37-114938

CGTA TREE (803)
37-112801

CG TREE (732)
37-111225

EXAMPLES OF CLASS-B ALTITUDES
70 --- Ceiling in hundreds of feet MSL