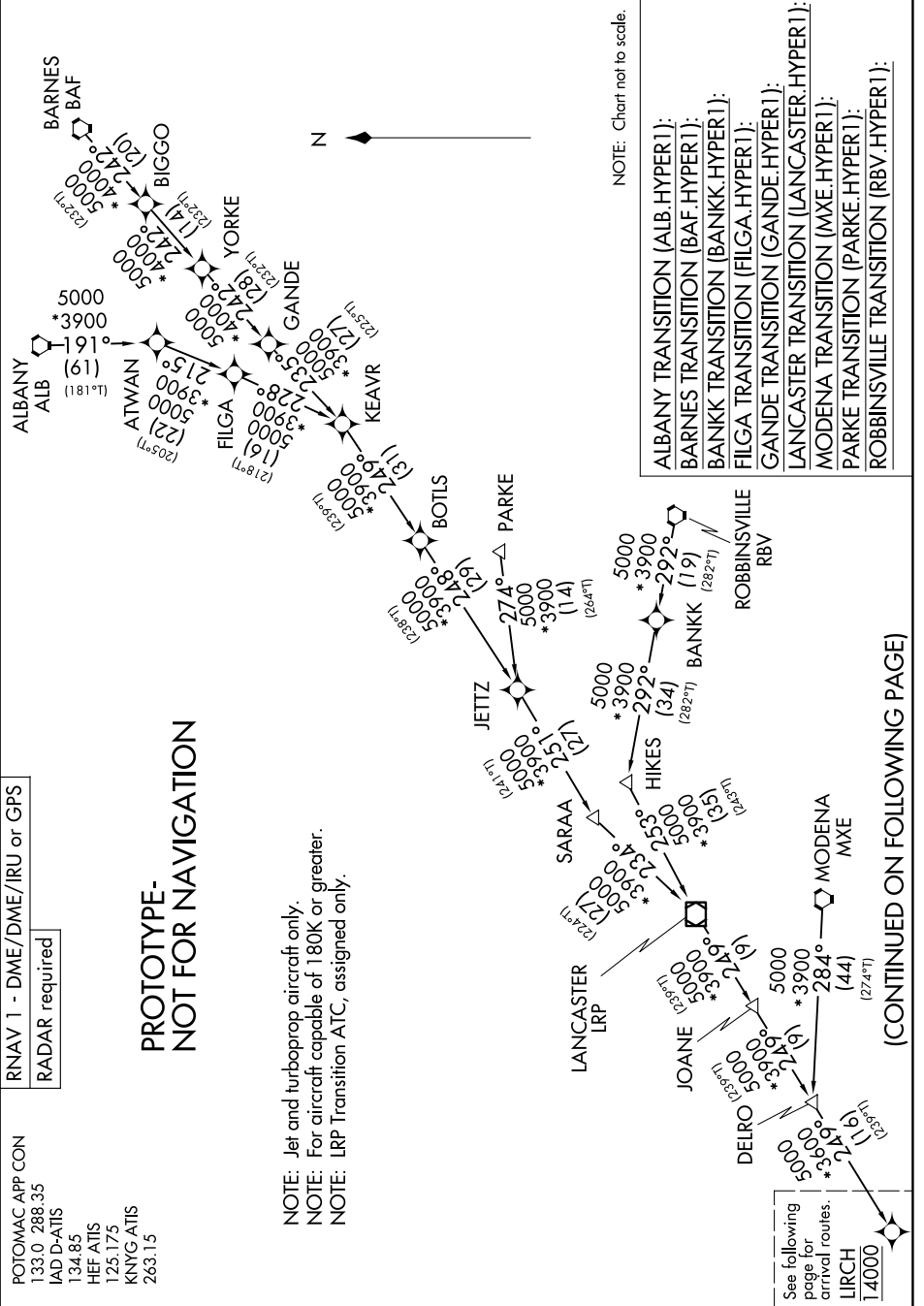


HYPER ONE ARRIVAL (RNAV) Transition Routes



HYPER ONE ARRIVAL (RNAV) Arrival Routes

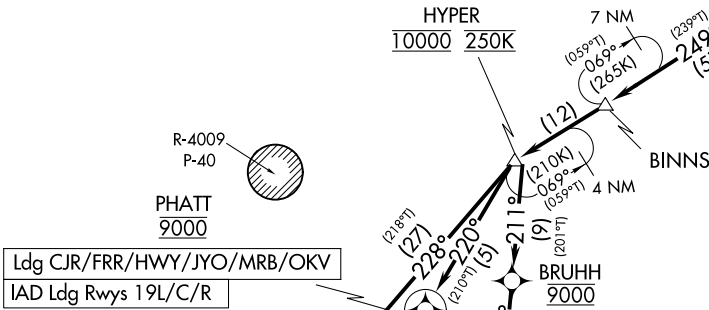
WASHINGTON, DC

POTOMAC APP CON
 133.0 288.35
 IAD D-ATIS
 134.85
 HEF ATIS
 125.175
 KNYG ATIS
 263.15

RNAV 1 - DME/DME/IRU or GPS

RADAR required

LIRCH
14000



Ldg CJR/FRR/HWY/JYO/MRB/OKV
 IAD Ldg Rwyws 19L/C/R

NOTE: Jet and turboprop aircraft only.
 NOTE: For aircraft capable of 180K or greater.

EASTERN WV RGNL/SHEPHERD FLD

WINCHESTER RGNL

ELISN
 IAD Ldg Rwyws 1L, 30

FRONT ROYAL-WARREN COUNTY

LEESBURG EXEC

WASHINGTON DULLES INTL

MANASSAS RGNL/HARRY P DAVIS FLD

WARRENTON/FAUQUIER

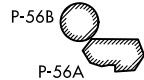
CULPEPER RGNL

SHANNON

STAFFORD RGNL

QUANTICO MCAF (TURNER FLD)

YACKK 4000 210K
 IAD Ldg Rwyws 1C/R



TICON
 Ldg EZF/HEF/NYG/RMN

PROTOTYPE - NOT FOR NAVIGATION

NOTE: Chart not to scale.

(CONTINUED ON FOLLOWING PAGE)

HYPER ONE ARRIVAL (RNAV) Arrival Routes

WASHINGTON, DC

ARRIVAL ROUTE DESCRIPTION

IAD: From LIRCH on track 249° to BINNS, then on track 249° to cross HYPER at 10000 and at 250K.

LANDING IAD RUNWAYS 1C/R: From HYPER on track 211° to cross BRUHH at 9000, then on track 211° to cross SIGBE at 7000, then on track 189° to cross MOWAT at 5000, then on track 189° to cross HUSEL at 4000, then on track 190° to cross YACKK at 4000 and at 210K, then on track 191°. Expect RADAR vectors to final approach course.

LANDING IAD RUNWAYS 1L, 30: From HYPER on track 228° to cross CRAIN at 6000, then on track 188° to cross KUKSE at 5000, then on track 190° to ELISN, then on track 190°. Expect RADAR vectors to final approach course.

LANDING IAD RUNWAYS 19L/C/R: From HYPER on track 220° to cross PHATT at 9000, then on track 220°. Expect RADAR vectors to final approach course.

LANDING CJR/MRB/JYO/FRR/HWY/OKV: From LIRCH on track 249° to BINNS, then on track 249° to cross HYPER at 10000 and at 250K, then on track 220° to cross PHATT at 9000, then on track 240°. Expect RADAR vectors to final approach course.

LANDING NYG/EZF/RMN/HEF: From LIRCH on track 249° to BINNS, then on track 249° to cross HYPER at 10000 and at 250K, then on track 211° to cross BRUHH at 9000, then on track 211° to cross SIGBE at 7000, then on track 189° to cross MOWAT at 5000, then on track 189° to cross HUSEL at 4000, then on track 190° to TICON, then on track 191°. Expect RADAR vectors to final approach course.

PROTOTYPE-NOT FOR NAVIGATION