

| | | | | | |
|---|--|--------------------------------|-------------------------------------|---|--|
| Flight Procedures Cover Page | Task Action: Abbreviated Amendment | Task Type: SID | Estimated Chart Date: 06/12/2025 | APWS Task ID: CC2556051C0B4C14805EDB9DB67CE133 | APWS Project ID: 99ADD3B3500A45B98693BAB69449FC75 |
| Procedure: AURELIA FOUR DEPARTURE (RNAV) | | Enroute: YES | Specialist: Blanco, Joseph | | Agreement Number: |
| Airport ID: KSUN | | | Airport City: HAILEY | | State: ID |
| Facility ID: | Facility Type: | Flight Inspection Remark Type: | | | |
| <div>Procedure Comments: PROCESSED IAW TECHNICAL SUPPORT GROUP (AJF-17) MEMO DATED 07/07/2021, SUBJECT: GUIDANCE FOR PROCEDURAL CHANGES REQUIRING FLIGHT INSPECTION/VALIDATION UPDATED TOP ALTITUDE ACTIVE DATA USED FOR AIRPORT AND RUNWAYS CONTACTS: CASIMIR TABAKA (AJV-A432) 405-954-7931 BEVERLY L. BORDY (AJV-A430) 405-954-8293</div> | | | | | |

QUALITY
41
CHECKED

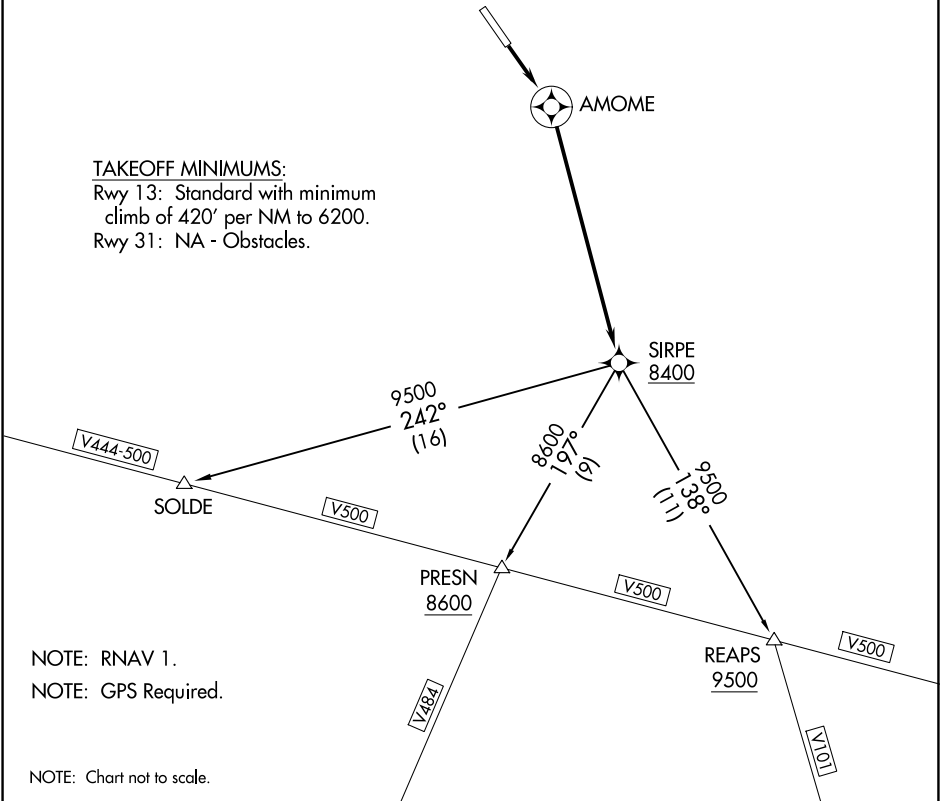
QUALITY
23
CHECKED

TOP ALTITUDE:
PRESN AND REAPS TRANSITIONS: 10000;
SOLDE TRANSITION: ASSIGNED BY ATC

GND CON
121.7
HAILEY TOWER ★
125.6
SALT LAKE CENTER
118.05 363.0
UNICOM 122.95

OLD

TAKEOFF MINIMUMS:
Rwy 13: Standard with minimum
climb of 420' per NM to 6200.
Rwy 31: NA - Obstacles.



NOTE: RNAV 1.
NOTE: GPS Required.



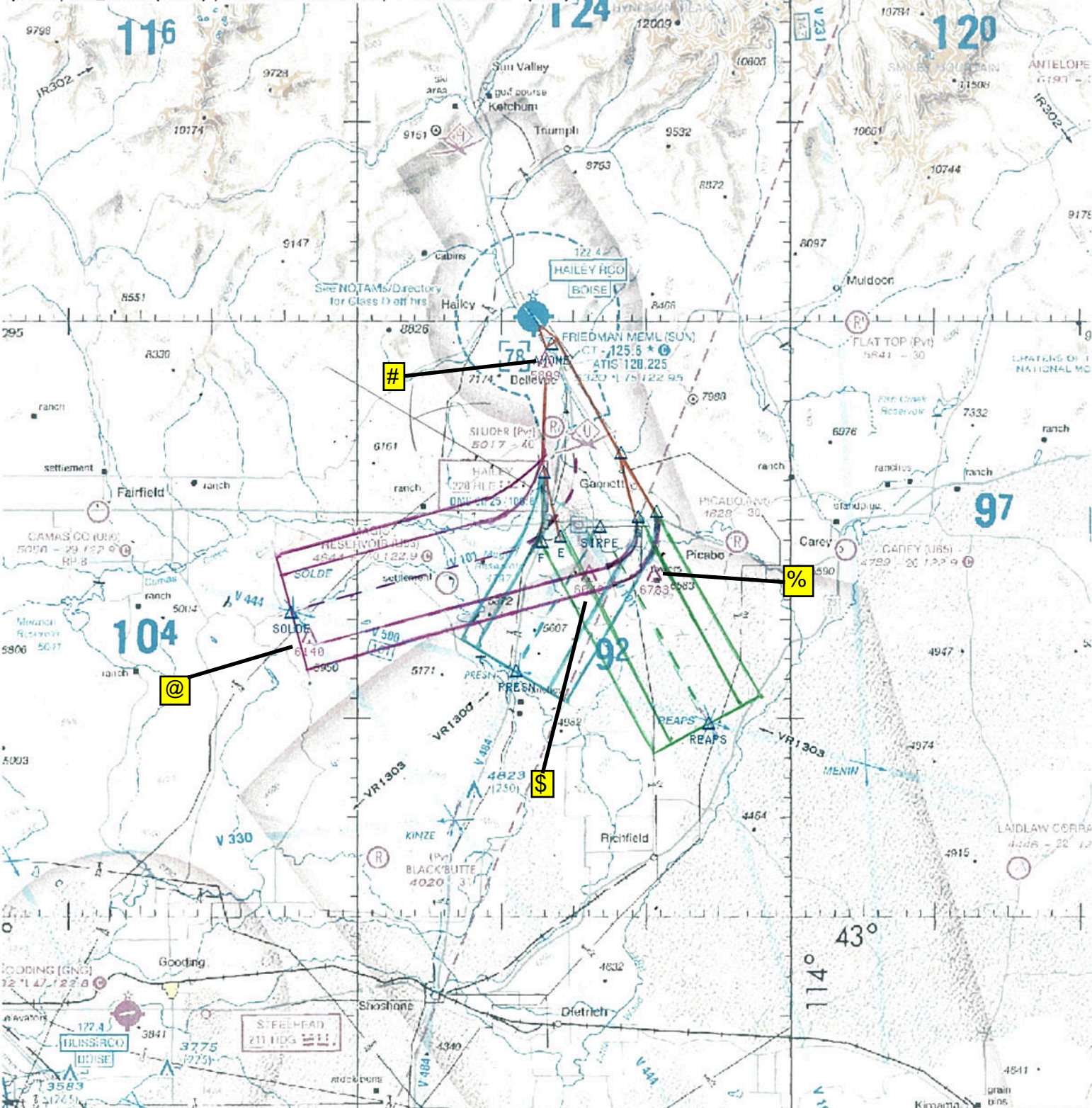
DEPARTURE ROUTE DESCRIPTION

TAKEOFF RUNWAY 13: Climb direct AMOME, then climbing right turn direct
SIRPE; cross SIRPE at or above 8400, thence. . . .
. . . .on (Transition).

- PRESN TRANSITION (AUREL3.PRESN)
- REAPS TRANSITION (AUREL3.REAPS)
- SOLDE TRANSITION (AUREL3.SOLDE)

NM 7 14 21 28 35 42 49
FT 42000 84000 126000 168000 210000 252000 294000

fporzd | sun_aursid (PROD) | 24 Mar 2016 12:58:45 | 1" = 41666.7 feet (MAP)

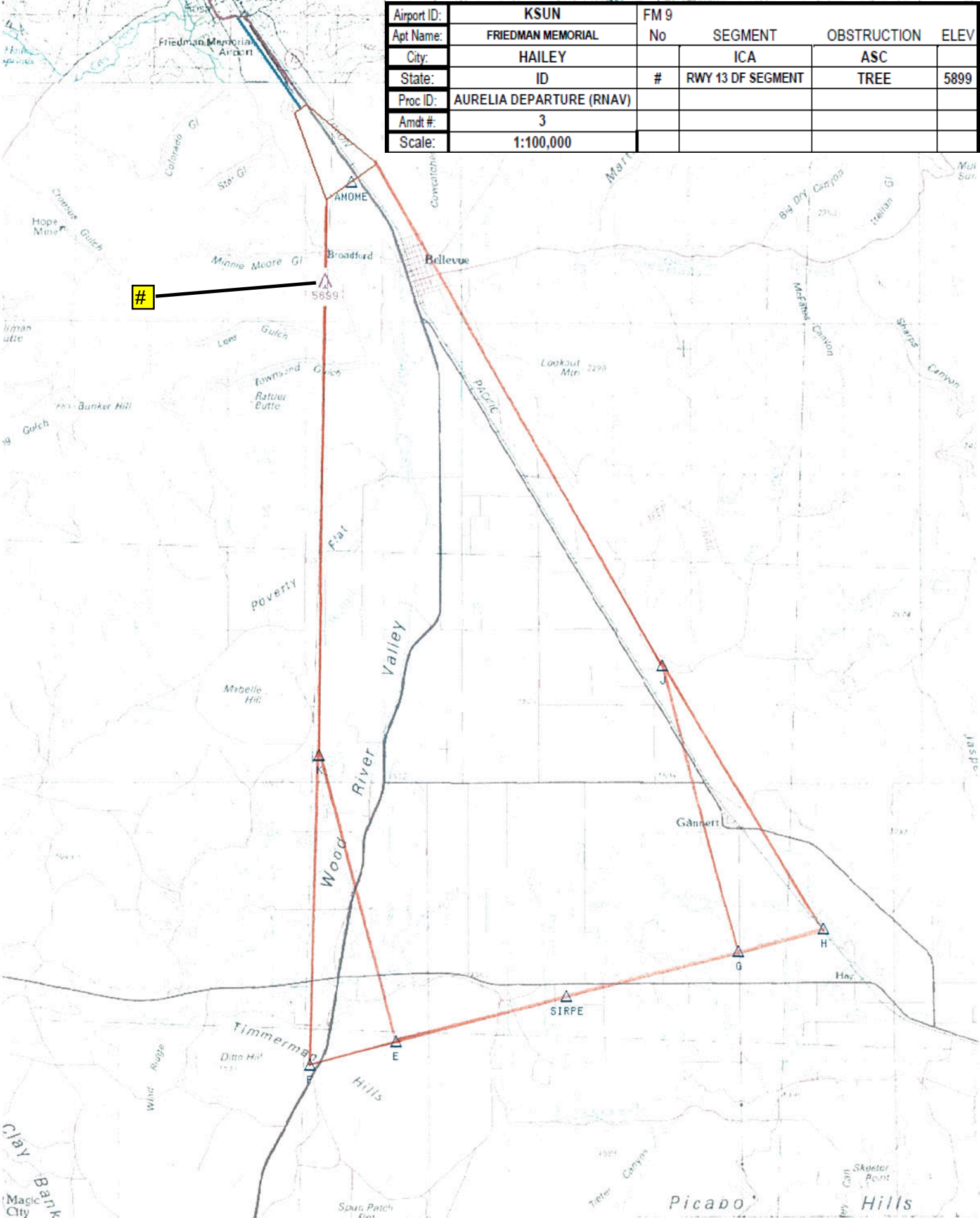


| | | | | | |
|-------------|--------------------------|------|-------------------|-------------|------|
| Airport ID: | KSUN | FM 9 | | | |
| Apt Name: | FRIEDMAN MEMORIAL | No | SEGMENT | OBSTRUCTION | ELEV |
| City: | HAILEY | # | ICA | ASC | |
| State: | ID | | RWY 13 DF SEGMENT | TREE | 5899 |
| Proc ID: | AURELIA DEPARTURE (RNAV) | @ | SOLDE TRANSITION | AAO | 6140 |
| Amdt #: | 3 | \$ | PRESN TRANSITION | AAO | 6042 |
| Scale: | 1:500,000 | % | REAPS TRANSITION | AAO | 6783 |

NM 1 2 3 4 5 6 7 8 9 10
FT 8000 16000 24000 32000 40000 48000 56000 64000

fporzd | sun_aursid (PROD) | 24 Mar 2016 14:13:00 | 1" = 8333.3 feet (MAP)

| | | | | | |
|-------------|--------------------------|------|-------------------|-------------|------|
| Airport ID: | KSUN | FM 9 | | | |
| Apt Name: | FRIEDMAN MEMORIAL | No | SEGMENT | OBSTRUCTION | ELEV |
| City: | HAILEY | | ICA | ASC | |
| State: | ID | # | RWY 13 DF SEGMENT | TREE | 5899 |
| Proc ID: | AURELIA DEPARTURE (RNAV) | | | | |
| Amdt #: | 3 | | | | |
| Scale: | 1:100,000 | | | | |



Periodic Review

David A. Dowling

01-15-20

FRIEDMAN MEMORIAL AIRPORT
HAILEY, ID (KSUN)

AURELIA THREE _RNAV_

Review Type: PARTIAL

Summary/Findings

GENERAL REMARKS: REVIEW AND EVALUATIONS CONDUCTED USING ACTIVE DATA AND PUBLISHED SID MINIMUMS AND/OR SEGMENT ALTITUDE RESTRICTIONS.

TYPE: PARTIAL ASSESSMENT COMPLETED.

DP ROUTE DESCRIPTION: UDATING REQUIRED. ALL RUNWAYS: CHANGE "CLIMB HEADING" TO "CLIMB ON HEADING..." PER .46G.

TRANSITION ROUTES: ALL THREE SAT.

PROCEDURAL DATA NOTES: SAT.

TAKEOFF MINIMUMS: RWY 13 MINIMUMS DO NOT MATCH THOSE PUBLISHED ON THE ODP.

SID RWY 13, STANDARD WITH A MINIMUM CLIMB OF 420 FT PER NM TO 6200.

ODP RWY 13, 900-2 ½ WITH MINIMUM CLIMB OF 390 FT PER NM TO 7000, OR STANDARD WITH MINIMUM CLIMB OF 605 FT PER NM TO 7000, OR 3600-3 FOR CLIMB IN VISUAL CONDITIONS.

TAKEOFF OBSTACLES NOTES: WHEN NEXT AMENDED REMOVE ALL DETAILED OBSTACLE NOTES FOR ALL RUNWAYS AND ADD STATEMENT: "SEE FORM 8260-15A, TAKEOFF MINIMUMS AND OBSTACLE DEPARTURE PROCEDURES (ODP)." --PER .46H APPENDIX D7, PAGE D-14.

OBSTACLES:

-TAKEOFF: SAT.

-CONTROLLING: SAT
-MANDATING ROUTE: SAT.

LOST COMMUNICATIONS PROCEDURES: N/A.

ADDITIONAL FLIGHT DATA: .SAT.

AIRPORTS SERVED: SAT.

OTHER:

- AIRPORT MVAR CURRENT AT E13/2020.
- NOTAM: NONE REQUIRED. AND NO ACTIVE NOTAMS.
- PREVIOUS REVIEW FOLLOW UP: NO ISSUES.

Actions/Notes

SAT AS PUBLISHED.