

FEDERAL AVIATION ADMINISTRATION
 FLIGHT STANDARDS SERVICE
 STANDARD TERMINAL ARRIVAL (STAR)

Bearings, headings, courses, tracks and radials are magnetic. Elevations and altitudes are in feet, MSL. Altitudes are minimum altitudes unless otherwise indicated.
 Ceilings are in feet above airport elevation. Distances are in nautical miles. Visibilities are in statute miles or feet RVR unless otherwise indicated.

Arrival Name	Number	STAR Computer Code	Superseded Number	Dated	Effective Date
MAATY (RNAV)	SIX	MAATY.MAATY6	FIVE	10/31/2024	

TRANSITION ROUTES:

Transition Name	Transition Computer Codes	From FIX/NAVAID	To FIX/NAVAID	Course	Distance	MEA	MOCA	MAA	Crossing Altitudes / Fixes
ACORI	ACORI.MAATY6	ACORI	ACORI						
			CABLO	143.52	79.46	8000	2600		
			THRTL	144.08	35.12	8000	2600		
			HEVVN	144.24	40.11	5000	2600		
			LEGGT	155.59	41.12	5000	2600	AT FL270	
			GOJOE	155.81	13.15	5000	2600		
			AAHOY	155.83	31.53	5000	2600		
			MAATY	155.97	10.36	5000	2600	AT 11000	
BADDD	BADDD.MAATY6	BADDD	BADDD						
			GPEEE	257.83	62.97	8000	2600		
			THRTL	211.98	60.21	8000	2600		
			HEVVN	144.24	40.11	5000	2600		
			LEGGT	155.59	41.12	5000	2600	AT FL270	
			GOJOE	155.81	13.15	5000	2600		
			AAHOY	155.83	31.53	5000	2600		
			MAATY	155.97	10.36	5000	2600	AT 11000	
DEFUN	DEFUN.MAATY6	DEFUN	DEFUN						
			CABLO	096.70	66.78	8000	2600		
			THRTL	144.08	35.12	8000	2600		
			HEVVN	144.24	40.11	5000	2600		
			LEGGT	155.59	41.12	5000	2600	AT FL270	
			GOJOE	155.81	13.15	5000	2600		
			AAHOY	155.83	31.53	5000	2600		
			MAATY	155.97	10.36	5000	2600	AT 11000	
GOJOE	GOJOE.MAATY6	GOJOE	GOJOE						
			AAHOY	155.83	31.53	5000	2600		
			MAATY	155.97	10.36	5000	2600	AT 11000	



FEDERAL AVIATION ADMINISTRATION
 FLIGHT STANDARDS SERVICE
 STANDARD TERMINAL ARRIVAL (STAR)

Bearings, headings, courses, tracks and radials are magnetic. Elevations and altitudes are in feet, MSL. Altitudes are minimum altitudes unless otherwise indicated.
 Ceilings are in feet above airport elevation. Distances are in nautical miles. Visibilities are in statute miles or feet RVR unless otherwise indicated.

Arrival Name	Number			STAR Computer Code	Superseded Number			Dated	Effective Date
MAATY (RNAV)	SIX			MAATY.MAATY6	FIVE			10/31/2024	
Transition Name	Transition Computer Codes	From FIX/NAVAID	To FIX/NAVAID	Course	Distance	MEA	MOCA	MAA	Crossing Altitudes / Fixes
HEVVN	HEVVN.MAATY6	HEVVN	HEVVN						
			LEGGT	155.59	41.12	5000	2600		AT FL270
			GOJOE	155.81	13.15	5000	2600		
			AAHOY	155.83	31.53	5000	2600		
			MAATY	155.97	10.36	5000	2600		AT 11000
HONID	HONID.MAATY6	HONID	HONID						
			THRTL	185.07	78.83	8000	2600		
			HEVVN	144.24	40.11	5000	2600		
			LEGGT	155.59	41.12	5000	2600		AT FL270
			GOJOE	155.81	13.15	5000	2600		
			AAHOY	155.83	31.53	5000	2600		
			MAATY	155.97	10.36	5000	2600		AT 11000

ARRIVAL ROUTE DESCRIPTION:

TPA: FROM MAATY ON TRACK 156.02/10.00 TO ROOKR.

LANDING TPA RWY 1L/R, 10: FROM ROOKR ON TRACK 140.59/16.25 TO BLOUT, THEN ON TRACK 139.47/6.13 TO CBASS, THEN ON TRACK 187.04/6.40 TO CROSS TOOTH AT 5000 AND AT 210 KIAS, THEN ON TRACK 187.00/3.60 TO BUGGO, THEN ON TRACK 187.00/5.00 TO CROSS FELOM AT 5000 AND AT 210 KIAS, THEN ON TRACK 187.00. EXPECT RADAR VECTORS TO FINAL APPROACH COURSE.

LANDING TPA RWY 28, 19L/R: FROM ROOKR ON TRACK 093.25/15.76 TO CROSS SCLOP AT 5000 AND AT 230 KIAS, THEN ON TRACK 097.00. EXPECT RADAR VECTORS TO FINAL APPROACH COURSE.

LANDING MCF/VDF/LAL: FROM MAATY ON TRACK 156.02/5.24 TO CROSS GOOFS AT 11000, THEN ON HEADING 155.00. EXPECT RADAR VECTORS TO FINAL APPROACH COURSE.

PBN REQUIREMENT NOTES:

RNAV 1 - DME/DME/IRU OR GPS

EQUIPMENT REQUIREMENT NOTES:

RADAR REQUIRED

PROCEDURAL DATA NOTES:

NOTE: JET AND TURBOPROP AIRCRAFT ONLY

NOTE: DO NOT FILE BADDD, HEVVN OR GOJOE TRANSITION - TO BE ASSIGNED BY ATC.

NOTE: TPA LANDING SOUTH – EXPECT 280 KIAS AT MAATY.

FIXES AND/OR HOLDING PATTERNS:

CHART HOLDING AT HEVVN: HOLD NW, LT, 155.59 INBOUND, 10 NM LEGS.

CHART HOLDING AT MAATY: HOLD NW, RT, 155.97 INBOUND, 8 NM LEGS.

CHART HOLDING AT THRTL: HOLD NW, LT, 144.08 INBOUND, 10 NM LEGS.

CHART: FADDI, LAGOO, KRSTI.



FEDERAL AVIATION ADMINISTRATION
 FLIGHT STANDARDS SERVICE
 STANDARD TERMINAL ARRIVAL (STAR)

Bearings, headings, courses, tracks and radials are magnetic. Elevations and altitudes are in feet, MSL. Altitudes are minimum altitudes unless otherwise indicated.
 Ceilings are in feet above airport elevation. Distances are in nautical miles. Visibilities are in statute miles or feet RVR unless otherwise indicated.

Arrival Name	Number	STAR Computer Code	Superseded Number	Dated	Effective Date
MAATY (RNAV)	SIX	MAATY.MAATY6	FIVE	10/31/2024	

COMMUNICATIONS:

AIRPORTS SERVED:

AIRPORT ID	CITY	STATE
TPA	TAMPA	FL
LAL	LAKELAND	FL
MCF	TAMPA	FL
VDF	TAMPA	FL

LOST COMMUNICATIONS PREFERENCES:

REMARKS:

ABBREVIATED AMDT.
 THE ENVIRONMENTAL REVIEW UNDER ORDER 1050.1 (LATEST EDITION) AND THE NOISE SCREENING HAVE BEEN ACCOMPLISHED.
 ASSUMED SHIP HEIGHT 295 FT OVER OPEN OCEAN.
 TWR 12-003314, 1544 MSL, LOCATED IN RWY TRANSITIONS (ROOKR-BLOUT) REQUIRES 2600 MOCA VALUE.

ADDITIONAL FLIGHT DATA:

DME/DME ASSESSMENT: SAT (RNP 2.0)
 MAG VAR: TPA 05W/2010
 CHART AT SCLOP TERMINUS: TPA LDG RWY 28, 19L/R
 CHART AT FELOM TERMINUS: TPA LDG RWY 1L/R, 10
 CHART AT GOOFS TERMINUS: LDG LAL/MCF/VDF

FLIGHT INSPECTED BY:

ORGANIZATION: DATE:

PROCESSED IAW TECHNICAL SUPPORT GROUP (AJF-17) MEMO DATED 07/07/2021,
 GUIDANCE FOR PROCEDURAL CHANGES REQUIRING FLIGHT INSPECTION/
 VALIDATION.

Flight Inspected Signature:

Digitally signed by
CASIMIR L TABAKA

Feb 11, 2026

Digitally signed by

CASIMIR L TABAKA

Feb 11, 2026

DEVELOPED BY:

CASIMIR TABAKA (BARBARA GORMAN) AJV-A432 12/10/2025

Developed By Signature:

APPROVED BY:

CASIMIR TABAKA AJV-A430

Approved By Signature:

Digitally signed by
CASIMIR L TABAKA

Feb 11, 2026



FEDERAL AVIATION ADMINISTRATION
 FLIGHT STANDARDS SERVICE
 STANDARD TERMINAL ARRIVAL (STAR)

Bearings, headings, courses, tracks and radials are magnetic. Elevations and altitudes are in feet, MSL. Altitudes are minimum altitudes unless otherwise indicated.
 Ceilings are in feet above airport elevation. Distances are in nautical miles. Visibilities are in statute miles or feet RVR unless otherwise indicated.

Arrival Name	Number	STAR Computer Code	Superseded Number	Dated	Effective Date
MAATY (RNAV)	SIX	MAATY.MAATY6	FIVE	10/31/2024	

CHANGES:

1. TRANSITION ROUTES: ADDED ALTITUDE CONSTRAINT AT LEGGT OF "AT FL270".
2. TRANSITION ROUTES: CHANGED ALTITUDE CONSTRAINT AT MAATY FROM "BETWEEN 8000 AND 11000" TO "AT 11000".
3. UPDATED ENROUTE MOCA VALUES.
4. ADDED REMARK ASSUMED SHIP HEIGHT 295 FT OVER OPEN OCEAN.
5. ADDED CHART NOTE: TPA LANDING SOUTH – EXPECT 280 KTS AT MAATY.

REASONS:

- 1/2/5. ATC REQUEST.
3. NEW OBSTACLE EVALUATION.
4. OBSTACLE DEPICTED OVER WATER.

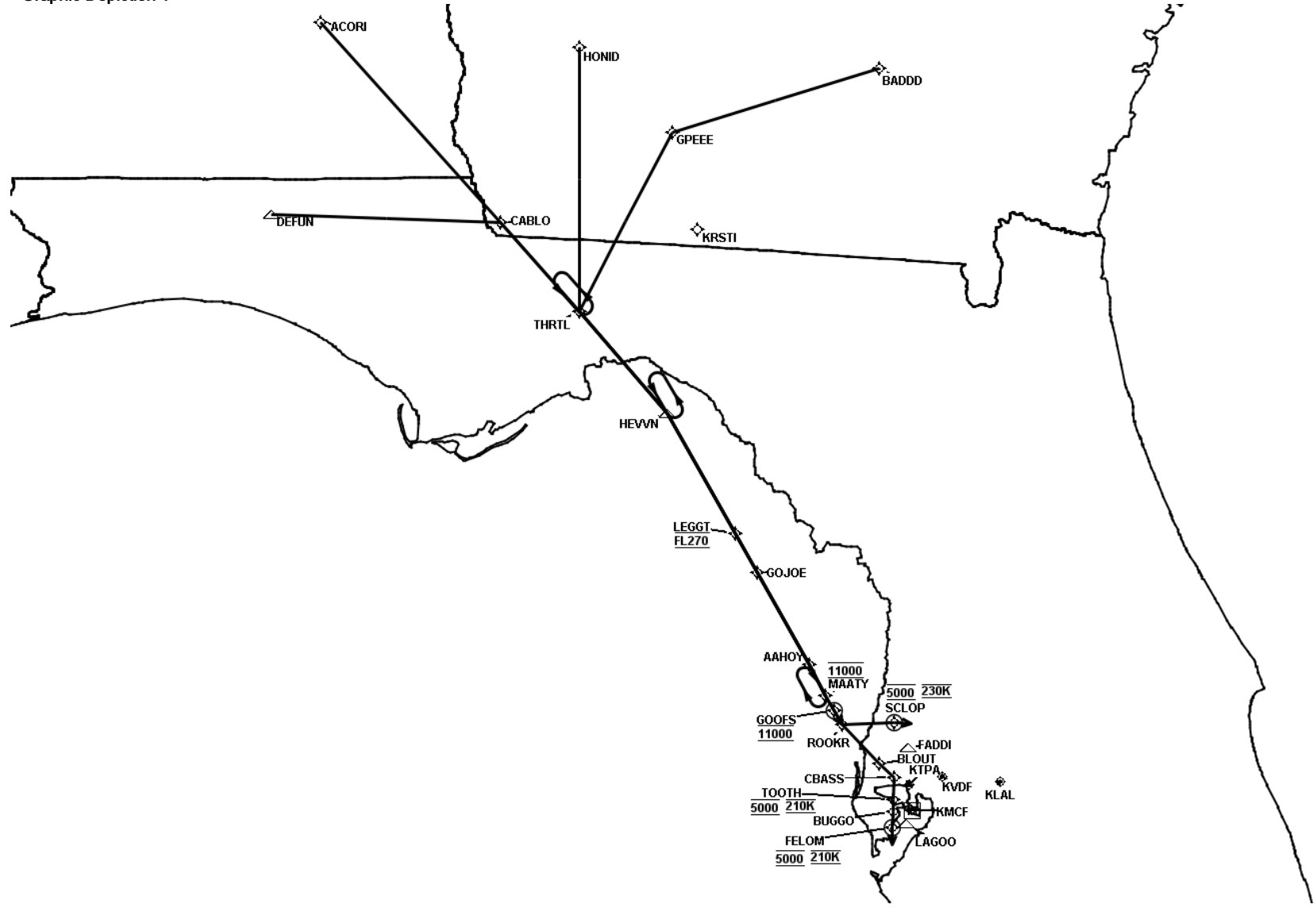


FEDERAL AVIATION ADMINISTRATION
 FLIGHT STANDARDS SERVICE
 STANDARD TERMINAL ARRIVAL (STAR)

Bearings, headings, courses, tracks and radials are magnetic. Elevations and altitudes are in feet, MSL. Altitudes are minimum altitudes unless otherwise indicated.
 Ceilings are in feet above airport elevation. Distances are in nautical miles. Visibilities are in statute miles or feet RVR unless otherwise indicated.

Arrival Name	Number	STAR Computer Code	Superseded Number	Dated	Effective Date
MAATY (RNAV)	SIX	MAATY.MAATY6	FIVE	10/31/2024	

Graphic Depiction 1

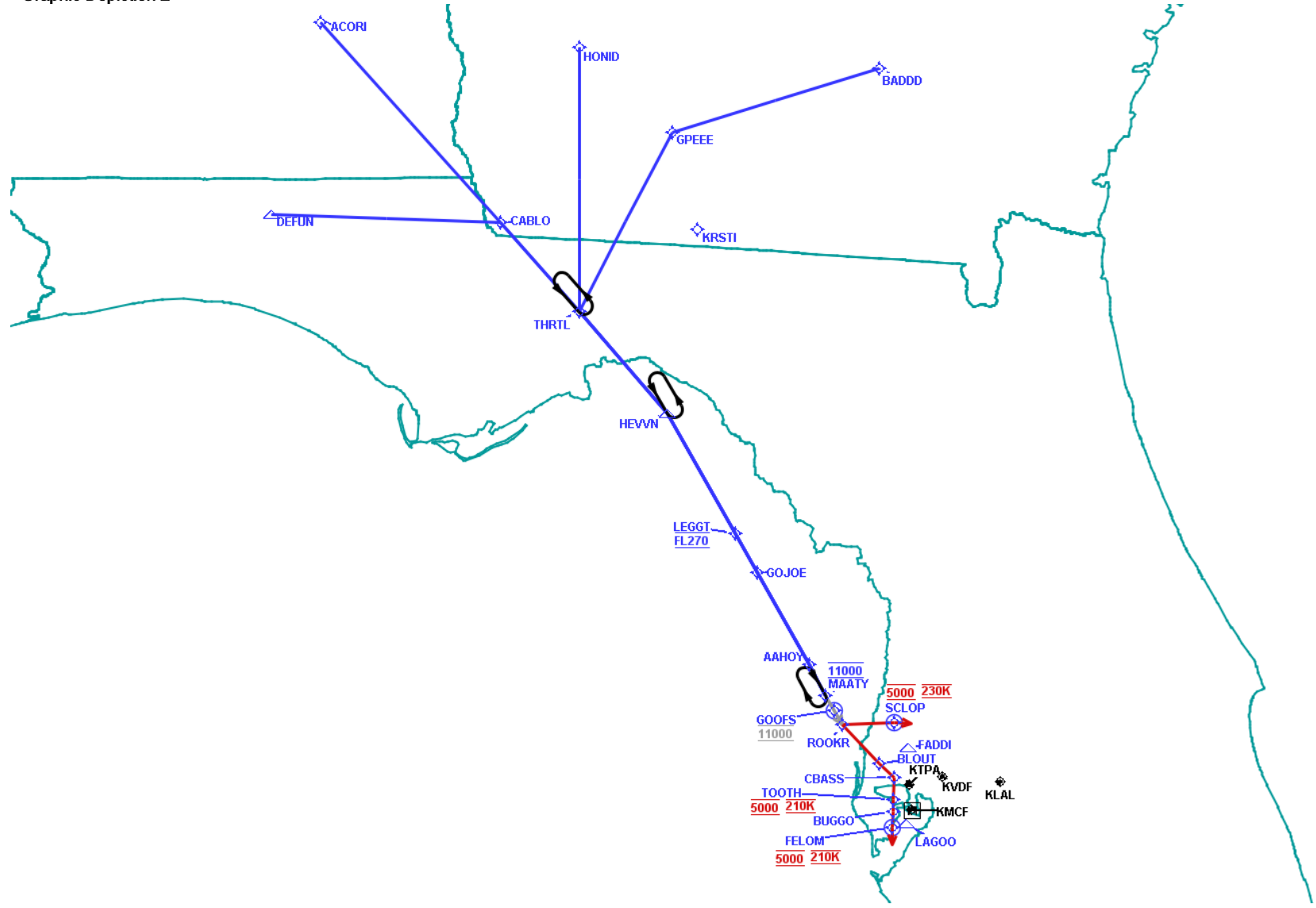


FEDERAL AVIATION ADMINISTRATION
 FLIGHT STANDARDS SERVICE
 STANDARD TERMINAL ARRIVAL (STAR)

Bearings, headings, courses, tracks and radials are magnetic. Elevations and altitudes are in feet, MSL. Altitudes are minimum altitudes unless otherwise indicated.
 Ceilings are in feet above airport elevation. Distances are in nautical miles. Visibilities are in statute miles or feet RVR unless otherwise indicated.

Arrival Name	Number	STAR Computer Code	Superseded Number	Dated	Effective Date
MAATY (RNAV)	SIX	MAATY.MAATY6	FIVE	10/31/2024	

Graphic Depiction 2

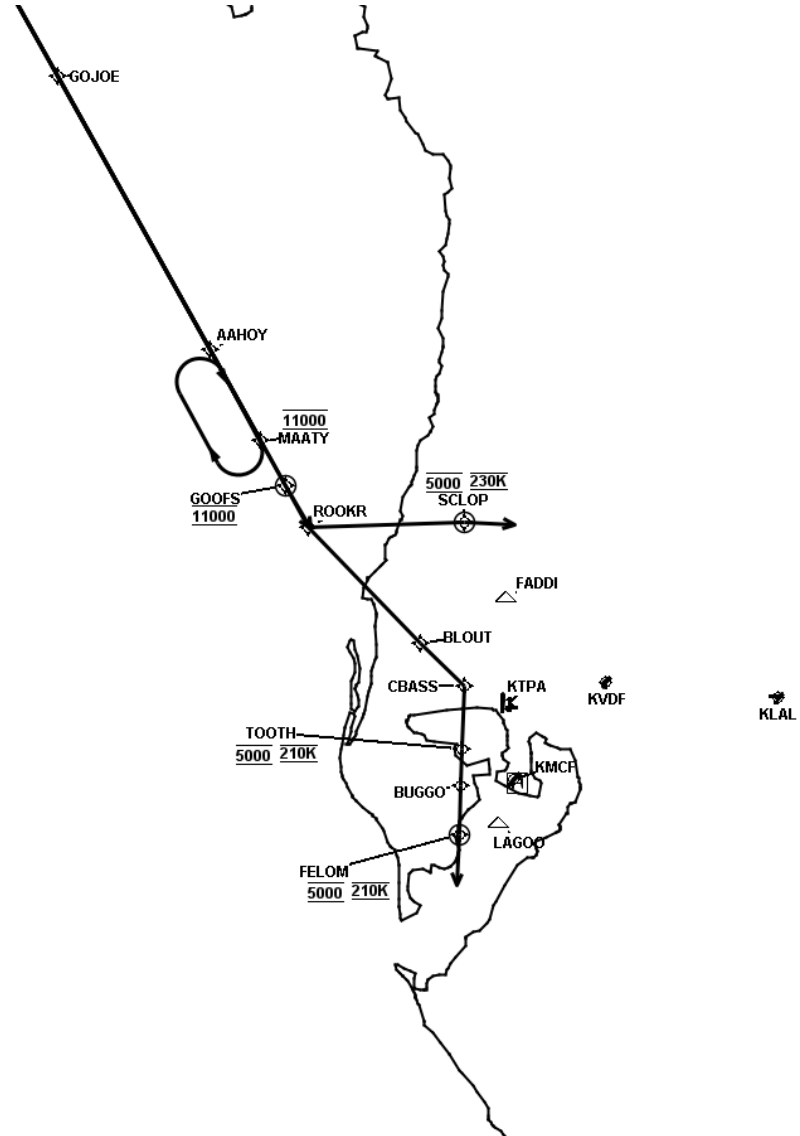


FEDERAL AVIATION ADMINISTRATION
 FLIGHT STANDARDS SERVICE
 STANDARD TERMINAL ARRIVAL (STAR)

Bearings, headings, courses, tracks and radials are magnetic. Elevations and altitudes are in feet, MSL. Altitudes are minimum altitudes unless otherwise indicated.
 Ceilings are in feet above airport elevation. Distances are in nautical miles. Visibilities are in statute miles or feet RVR unless otherwise indicated.

Arrival Name	Number	STAR Computer Code	Superseded Number	Dated	Effective Date
MAATY (RNAV)	SIX	MAATY.MAATY6	FIVE	10/31/2024	

Graphic Depiction 3

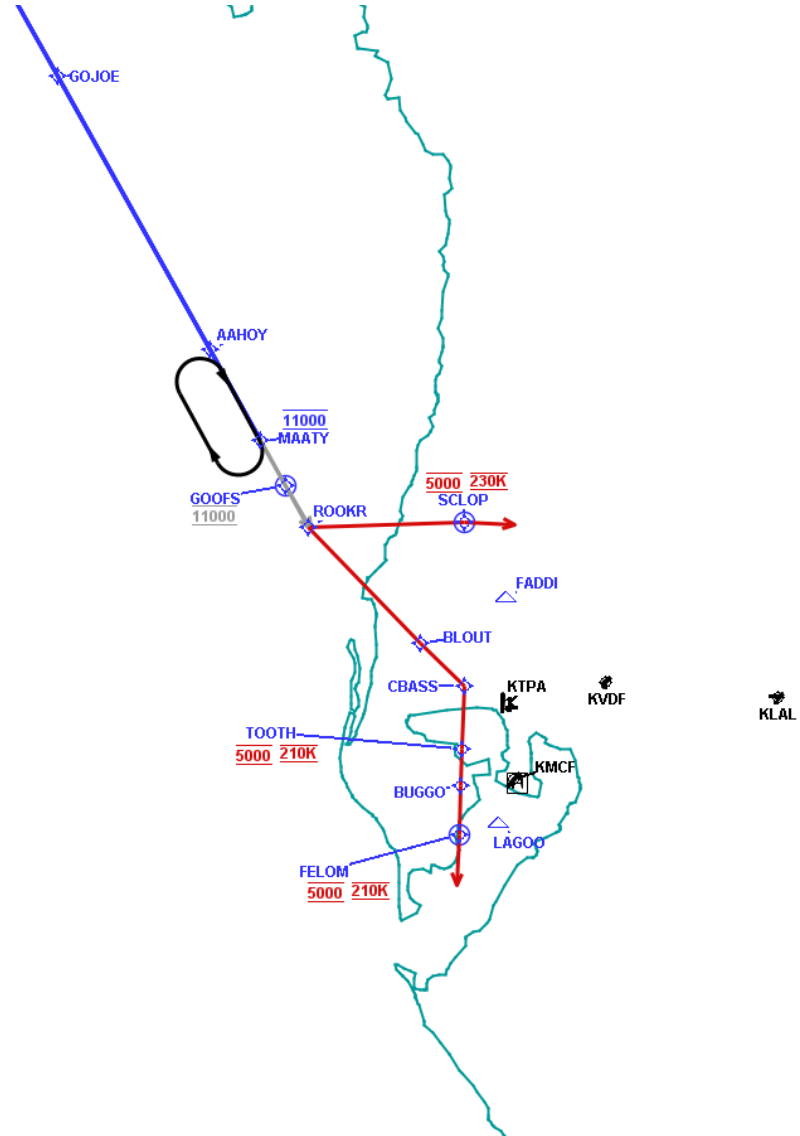


FEDERAL AVIATION ADMINISTRATION
 FLIGHT STANDARDS SERVICE
 STANDARD TERMINAL ARRIVAL (STAR)

Bearings, headings, courses, tracks and radials are magnetic. Elevations and altitudes are in feet, MSL. Altitudes are minimum altitudes unless otherwise indicated.
 Ceilings are in feet above airport elevation. Distances are in nautical miles. Visibilities are in statute miles or feet RVR unless otherwise indicated.

Arrival Name	Number	STAR Computer Code	Superseded Number	Dated	Effective Date
MAATY (RNAV)	SIX	MAATY.MAATY6	FIVE	10/31/2024	

Graphic Depiction 4



FEDERAL AVIATION ADMINISTRATION
 FLIGHT STANDARDS SERVICE
 STAR (DATA RECORD)

Arrival Name MAATY (RNAV)	Number SIX	STAR Computer Code MAATY.MAATY6		Superseded Number FIVE		Dated 10/31/2024	Effective Date		
<u>FIX/NAVAID</u>	<u>LAT/LONG</u>	<u>C</u>	<u>FO/FB</u>	<u>LEG TYPE</u>	<u>TC</u>	<u>DIST (NM)</u>	<u>ALTIITUDE</u>	<u>SPEED</u>	<u>REMARKS</u>
En Route Transition									
ACORI	314623.36N / 0855129.51W	Y		IF					ACORI.MAATY6
CABLO	304629.00N / 0845024.00W	Y	FB	TF	138.52	79.46			
THRTL	301949.99N / 0842349.07W	Y	FB	TF	139.08	35.12			
HEVVN	294919.11N / 0835342.89W	Y	FB	TF	139.24	40.11			
LEGGT	291322.56N / 0833038.60W	Y	FB	TF	150.59	41.12	AT FL270		
GOJOE	290151.75N / 0832319.67W	Y	FB	TF	150.81	13.15			
AAHOY	283414.32N / 0830552.46W	Y	FB	TF	150.83	31.53			
MAATY	282509.18N / 0830010.37W	Y	FB	TF	150.97	10.36	AT 11000		
En Route Transition									
BADDD	313237.68N / 0824205.34W	Y		IF					BADDD.MAATY6
GPEEE	311340.41N / 0835215.08W	Y	FB	TF	252.83	62.97			
THRTL	301949.99N / 0842349.07W	Y	FB	TF	206.98	60.21			
HEVVN	294919.11N / 0835342.89W	Y	FB	TF	139.24	40.11			
LEGGT	291322.56N / 0833038.60W	Y	FB	TF	150.59	41.12	AT FL270		
GOJOE	290151.75N / 0832319.67W	Y	FB	TF	150.81	13.15			
AAHOY	283414.32N / 0830552.46W	Y	FB	TF	150.83	31.53			
MAATY	282509.18N / 0830010.37W	Y	FB	TF	150.97	10.36	AT 11000		
En Route Transition									
DEFUN	304851.27N / 0860753.09W	Y		IF					DEFUN.MAATY6
CABLO	304629.00N / 0845024.00W	Y	FB	TF	091.70	66.78			
THRTL	301949.99N / 0842349.07W	Y	FB	TF	139.08	35.12			
HEVVN	294919.11N / 0835342.89W	Y	FB	TF	139.24	40.11			
LEGGT	291322.56N / 0833038.60W	Y	FB	TF	150.59	41.12	AT FL270		
GOJOE	290151.75N / 0832319.67W	Y	FB	TF	150.81	13.15			
AAHOY	283414.32N / 0830552.46W	Y	FB	TF	150.83	31.53			
MAATY	282509.18N / 0830010.37W	Y	FB	TF	150.97	10.36	AT 11000		



FEDERAL AVIATION ADMINISTRATION
 FLIGHT STANDARDS SERVICE
 STAR (DATA RECORD)

Arrival Name MAATY (RNAV)	Number SIX	STAR Computer Code MAATY.MAATY6		Superseded Number FIVE		Dated 10/31/2024	Effective Date		
<u>FIX/NAVAID</u>	<u>LAT/LONG</u>	<u>C</u>	<u>FO/FB</u>	<u>LEG TYPE</u>	<u>TC</u>	<u>DIST (NM)</u>	<u>ALTITUDE</u>	<u>SPEED</u>	<u>REMARKS</u>
En Route Transition									
GOJOE	290151.75N / 0832319.67W	Y		IF					GOJOE.MAATY6
AAHOY	283414.32N / 0830552.46W	Y	FB	TF	150.83	31.53			
MAATY	282509.18N / 0830010.37W	Y	FB	TF	150.97	10.36	AT 11000		
En Route Transition									
HEVVN	294919.11N / 0835342.89W	Y		IF					HEVVN.MAATY6
LEGGT	291322.56N / 0833038.60W	Y	FB	TF	150.59	41.12	AT FL270		
GOJOE	290151.75N / 0832319.67W	Y	FB	TF	150.81	13.15			
AAHOY	283414.32N / 0830552.46W	Y	FB	TF	150.83	31.53			
MAATY	282509.18N / 0830010.37W	Y	FB	TF	150.97	10.36	AT 11000		
En Route Transition									
HONID	313850.31N / 0842342.60W	Y		IF					HONID.MAATY6
THRTL	301949.99N / 0842349.07W	Y	FB	TF	180.07	78.83			
HEVVN	294919.11N / 0835342.89W	Y	FB	TF	139.24	40.11			
LEGGT	291322.56N / 0833038.60W	Y	FB	TF	150.59	41.12	AT FL270		
GOJOE	290151.75N / 0832319.67W	Y	FB	TF	150.81	13.15			
AAHOY	283414.32N / 0830552.46W	Y	FB	TF	150.83	31.53			
MAATY	282509.18N / 0830010.37W	Y	FB	TF	150.97	10.36	AT 11000		
Common Route									
MAATY	282509.18N / 0830010.37W	Y		IF			AT 11000		MAATY.MAATY6
ROOKR	281622.95N / 0825441.21W	Y	FB	TF	151.02	10.00			
Common Route									
MAATY	282509.18N / 0830010.37W	Y		IF			AT 11000		MAATY.MAATY6
GOOFS	282033.28N / 0825717.65W	Y	FO	TF	151.02	05.24	AT 11000		
KLAL,KMCF,KVDF				VM	150.00				



FEDERAL AVIATION ADMINISTRATION
 FLIGHT STANDARDS SERVICE
 STAR (DATA RECORD)

Arrival Name MAATY (RNAV)	Number SIX	STAR Computer Code MAATY.MAATY6		Superseded Number FIVE		Dated 10/31/2024	Effective Date		
<u>FIX/NAVAID</u>	<u>LAT/LONG</u>	<u>C</u>	<u>FO/FB</u>	<u>LEG TYPE</u>	<u>TC</u>	<u>DIST (NM)</u>	<u>ALTITUDE</u>	<u>SPEED</u>	<u>REMARKS</u>
Runway Transition									
ROOKR	281622.95N / 0825441.21W	Y		IF					
BLOUT	280444.03N / 0824149.86W	Y	FB	TF	135.59	16.25			
CBASS	280025.50N / 0823653.27W	Y	FB	TF	134.47	06.13			
TOOTH	275400.48N / 0823708.70W	Y	FB	TF	182.04	06.40	AT 5000	AT 210K	
BUGGO	275024.04N / 0823717.20W	Y	FB	TF	182.00	03.60			
FELOM	274523.21N / 0823729.01W	Y	FO	TF	182.00	05.00	AT 5000	AT 210K	
KTPA:RWY 1L,RWY 1R,RWY 10				FM	182.00				
Runway Transition									
ROOKR	281622.95N / 0825441.21W	Y		IF					
SCLOP	281650.81N / 0823650.71W	Y	FO	TF	088.25	15.76	AT 5000	AT 230K	
KTPA:RWY 19L,RWY 19R,RWY 28				FM	092.00				

