

Flight Procedures Cover Page	Task Action: P-NOTAM	Task Type: IAP	Estimated Chart Date: 09/03/2026	APWS Task ID: CC7440659A6A43DF96F71BD20E79F383	APWS Project ID: 0D3B3D612BAA493DBF0EE8527D725BEA
Procedure: RNAV (GPS) RWY 16 AMDT 1C		Enroute: NO	Specialist: Johnson, Timothy		Agreement Number:
Airport ID: KSRE			Airport City: SEMINOLE		State: OK
Facility ID:	Facility Type:	Flight Inspection Remark Type:			

Procedure Comments:

Visibility Initiative (Garmin) - Update IAP visibility minimums IAW Order 8260.3, Chapter 3, Section 3-3. Visibility Minimums.

PROCESSED IAW TECHNICAL SUPPORT GROUP (AJF-17) MEMO DATED 07/07/2021, SUBJECT: GUIDANCE FOR PROCEDURAL CHANGES REQUIRING FLIGHT INSPECTION/VALIDATION.

CONTACT: CASEY HILL (405) 954-0624.



APP CRS 160°	Rwy Idg TDZE Apt Elev	5004 1023 1023
------------------------	-----------------------------	---

RNAV (GPS) RWY 16

SEMINOLE MUNI (SRE)

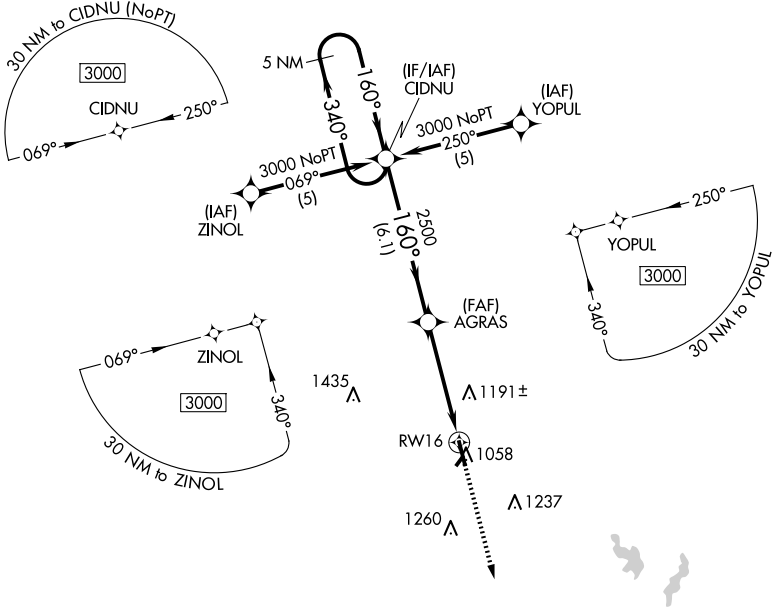
RNP APCH. Procedure NA at night. Circling NA to Rwy 5 and 23. Rwy 16 helicopter visibility reduction below 1 SM NA. When local altimeter setting not received, use Shawnee Rgnl altimeter setting and increase all MDA's 40 feet, and increase Circling Cat C visibility ¼ SM.

MISSED APPROACH: Climb to 3000 direct FANAD and hold.

AWOS-3
118.625

FORT WORTH CENTER
132.2 338.35

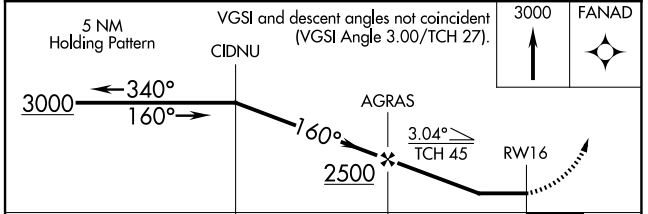
UNICOM
122.80



SC-1, 16 APR 2026 to 14 MAY 2026

SC-1, 16 APR 2026 to 14 MAY 2026

ELEV 1023 TDZE 1023



CATEGORY	A	B	C	D
LNAV MDA	1500-1	477 (500-1)	1500-1¼ 477 (500-1¼)	NA
CIRCLING	1500-1 477 (500-1)	1560-1 537 (600-1)	1620-1½ 597 (600-1½)	NA

REIL Rwy 16-34
MIRL Rwy 16-34